

ICSE2025
Faculty of Education and Liberal Arts
INTI International University, Nilai
24 September 2025

TITLE OF EXTENDED ABSTRACT

(The title should be concise and informative)

[Title: uppercase, bold, Times New Roman (TNR), font size 16, centered]

First A. Author¹*, Second B. Author², and Third C. Author³ (12 font size, centred)

¹The affiliation(s) of the author(s), i.e. institution, (department), city, (state), country (11 font size, centred)

*Corresponding author: affiliation, email address (11 font size, centred)

ABSTRACT

The abstract is a self-contained summary of your full-text paper that gives readers a basic understanding of your research. Abstracts should include an explanation of the research objectives and goals, the methods used and the outcomes or results achieved, as well as any findings, recommendations or conclusions drawn from the study. The importance of your research should be clear. DO NOT include any references, figures, equations, or tables here. At least three to five keywords or phrases should also be included. The abstract must be between 150 and 250 words, formatted in single spacing, and written in 10-point Times New Roman font.

Keywords: Keyword 1, Keyword 2, Keyword 3 (Min 3 Keywords & Max 5 Keywords)

INTRODUCTION

In this section, the author should address the following information, namely background, problem statement, and objectives of the research. Include the objective (s) of the study in the last paragraph of the introduction.

There is no indent at the beginning of each paragraph. Page margins are formed regarding the A4 page size and are 2.5 cm wide from the right, left, top and bottom. Authors are requested to submit the extended abstracts in electronic form (MS-Word) via our Online Submission. The extended abstract should be written in MS Word format in single-spaced in 12-point Times New Roman. Please ensure the extended abstract is approximately 800-1000 words in length, excluding references. The incorrect formats may result in your abstract being returned to you by e-mail. The easiest way to format your paper exactly like this template document is

simply to replace the content with your own material. Introduce the subject of interest, address the problem that needs research attention and cite references. All citations in the text must be listed in the reference list. The manuscript's in-text citations must adhere to the APA 7th edition guidelines.

METHODOLOGY

In this section, the author should concisely describe and justify the research design choices including methodological approach, sampling selection, materials, tools and instruments, data collection and analysis methods.

RESULTS AND DISCUSSION

In this section, the author should present findings and discussion. Tables and figures may be included within the text, ensuring they are centered and properly numbered. Refer to Figure 1 and Table 1 as examples of how to incorporate figures and tables in the extended abstract.

Tables and figures in APA Style consist of the following essential components (see APA's Tables and figures).

- **Number:** The table number (e.g., Table 1) appears above the table title in bold. Number tables in the order in which they are mentioned in your paper.
- **Title:** The table title appears one double-spaced line below the table number. Give each table a brief but descriptive title, and capitalize the table title in italic title case.

Table 1

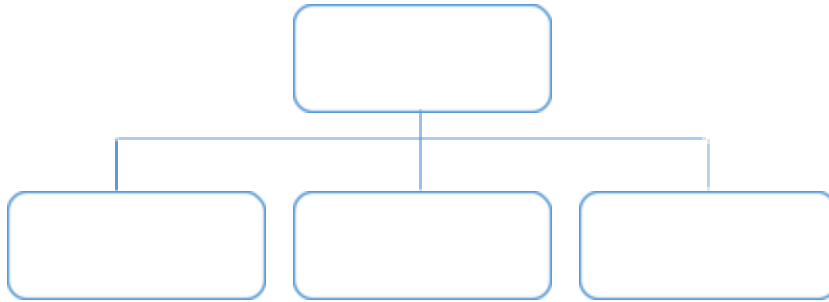
Sociodemographic Characteristics of Participants

Heading	Heading	Heading
1		
2		
3		

- **Number:** The figure number (e.g., Figure 1) appears above the figure in bold font. Number figures in the order in which they are mentioned in your paper.
- **Title:** The figure title appears one double-spaced line below the figure number. Give each figure a brief but descriptive title, and capitalize the figure title in italic title case.

Figure 1

Path Analysis Model of Associations Between ASMC and Body-Related Constructs



CONCLUSION

The conclusion is intended to help the reader understand why your research should matter to them after they have finished reading the paper. A conclusion is not merely a summary of the main topics covered or a re-statement of your research problem but a synthesis of key points and, if applicable, where you recommend new areas for future research.

ACKNOWLEDGMENT (Optional): The authors would like to express their appreciation for the support of the sponsors with Project No xxxx.

REFERENCE STYLE

An alphabetically ordered reference list is to be included at the end of the manuscript. All cited references in the text must appear in the list. The accuracy and completeness of the information in the references are the responsibility of the authors. The reference should follow the APA 7th referencing style. The reference style adopted should be consistent throughout the manuscript.

IN-TEXT CITATION

All citations in the text must be listed in the reference list. Cited references in the text should use the author-date method [e.g. *(Parenthetical & Narrative)* for 1 author Ahmad (1998); (Ahmad,1998) and for 2 Authors [(David & Simpson, 2006); David and Simpson (2006)]. If a work has more than three authors, include only the name of the first author, followed by “et al.” and the year whenever the work is published [(e.g. (Rush et al., 2019); Rush et al. (2019)].

Examples:

Journal

Amin, L., Azad, M.A.K., Ahmad Azlan, N.A. & Zulkifli, F. (2014). Factors influencing stakeholders' attitude toward cross-kingdom gene transfer in rice. *New Genetics and Society*, 33(4), 370-399.

Book

Green, J. & Thorogood, N. (2018). *Qualitative methods for health research*. SAGE Publications.

Book Chapter

Armstrong, D. (2019). Malory in character. In M. G. Leitch & C. J. Rushton (Eds.), *A new companion to Malory* (pp. 144-163). SAGE Publications.

Conference Paper

Rahmat, R.A., Jumari, K., Hassan, A. & Basri, H. (2002). Intelligent traffic control with image processing sensor. *Proceedings of the 2nd World Engineering Congress*, pp 339 – 344.