

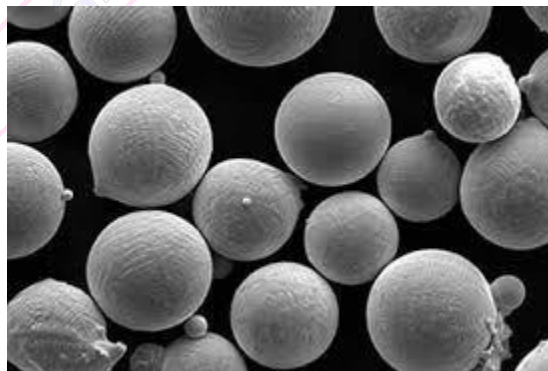
CO 104 – 105 – 106 – 107 – 108 - 109
Cobalt Metal Powder, Spherical

CO 104 – 105 – 106 – 107 – 108 - 109

Formula	Co
Purity	99.9% min
Particle size	-30 mesh - -100+325 mesh

Chemistry (in ppm unless otherwise stated)			
Elements	Typical Results	Elements	Typical Results
Al	10	Ca	15
Cd	15	Cu	5
Fe	300	Mg	8
Mn	6	Mo	400
Na	10	Ni	16
Pb	10	Si	20
Zn	15	C	130
S	10	Co	99.9% min

Average particle Size				
Catalog Number	Size	D10	D50	D90
CO 104	Plasma Spray Grade	74	103	143
CO 105	-100 mesh	100% -100 mesh		
CO 106	-100 + 325 mesh	74	103	143
CO 107	-80 + 100 mesh	132	163	205
CO 108	-60 + 80 mesh	177	218	275
CO 109	-30 + 60 mesh	590	250	



These grades of Cobalt Powders have a unique morphology and performance that make this product ideal for both diamond tool and hardmetal applications. For diamond tool segments, this product provides optimum hardness and processing stability over a wide range of hot pressing temperatures, resulting in improved cutting performance. In addition, the morphology allows this product to be used in a wide variety of conventional hardmetal applications, resulting in reduced milling times, less cobalt pooling, and improved microstructural homogeneity and performance.

Information presented herein is believed to be accurate and reliable but is not intended to meet any specification and does not imply any guarantee or warranty by Atlantic Equipment Engineers. For more information and assistance, please call (201) 384-5606.

• **Atlantic Equipment Engineers, 13 Foster Street, P.O. Box 181, Bergenfield, NJ 07621** •