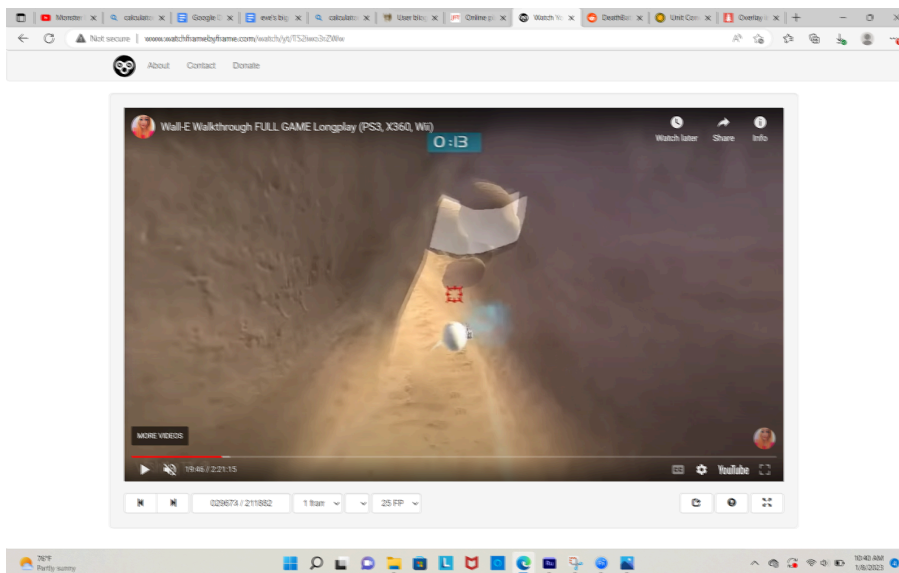
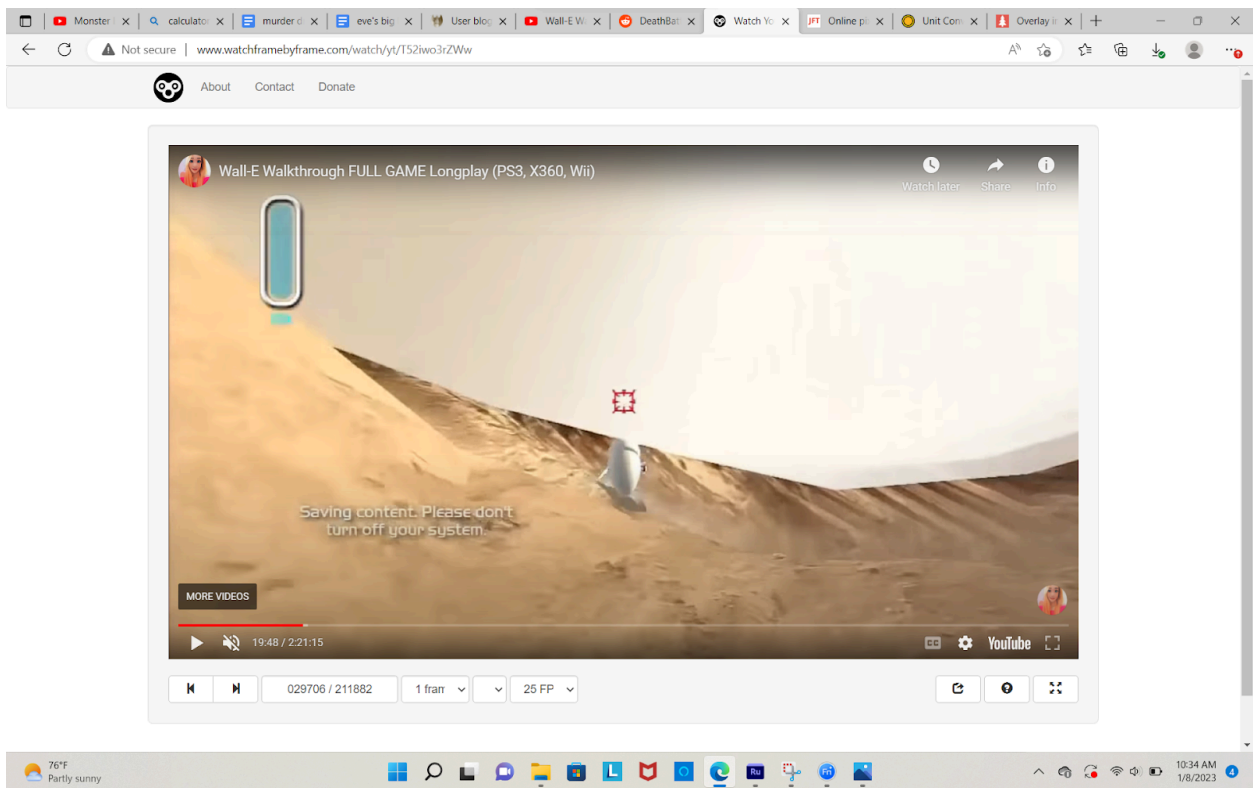


These are feats from the PS3,XBOX and Wii version of the WALL-E game (yes that's a thing) where EVE blasts multiple large objects. Pretty simple.

I got some of the numbers from here [User blog:Soupywolf5/JCC-3.0 | Character Stats and Profiles Wiki | Fandom](#)

Big rock



- Eve's height (50.78 inches): 101 pixels (0.502 inches per pixel)
- Height of ridge: 142 pixels (71.3 inches)
- Height of ridge 2: 21 pixels (3.39 inches per pixel)

First rock (2 spherical caps)

- Little r: 32 pixels (108.6 inch)
- Big R: 99 pixels (336.1 inch)
- Height: 31 pixels (105.2 inch)
- Total volume: $337069.3 \text{ inch}^2 / 5523588.3 \text{ cm}$
- Vaporisation of rock: 25,700 j/cm or 1606.25 j/inch
- Double it
- Energy: 283912438620 joules, 67.86 tons

Second rock (spherical cap, rectangle tank, spherical cap)

- First part little r: 27 pixels (91.53 inches)
- First part big R: 121 pixels (410.29 inches)
- First part height: 69 pixels (233.91 inches)
- First part volume: 289171993 cm

- Second part length: 27 pixels (91.53)
- Second part width: 121 pixels (410.29)
- Second part height: 40 pixels (135.6)
- Second part volume: 83448046 cm

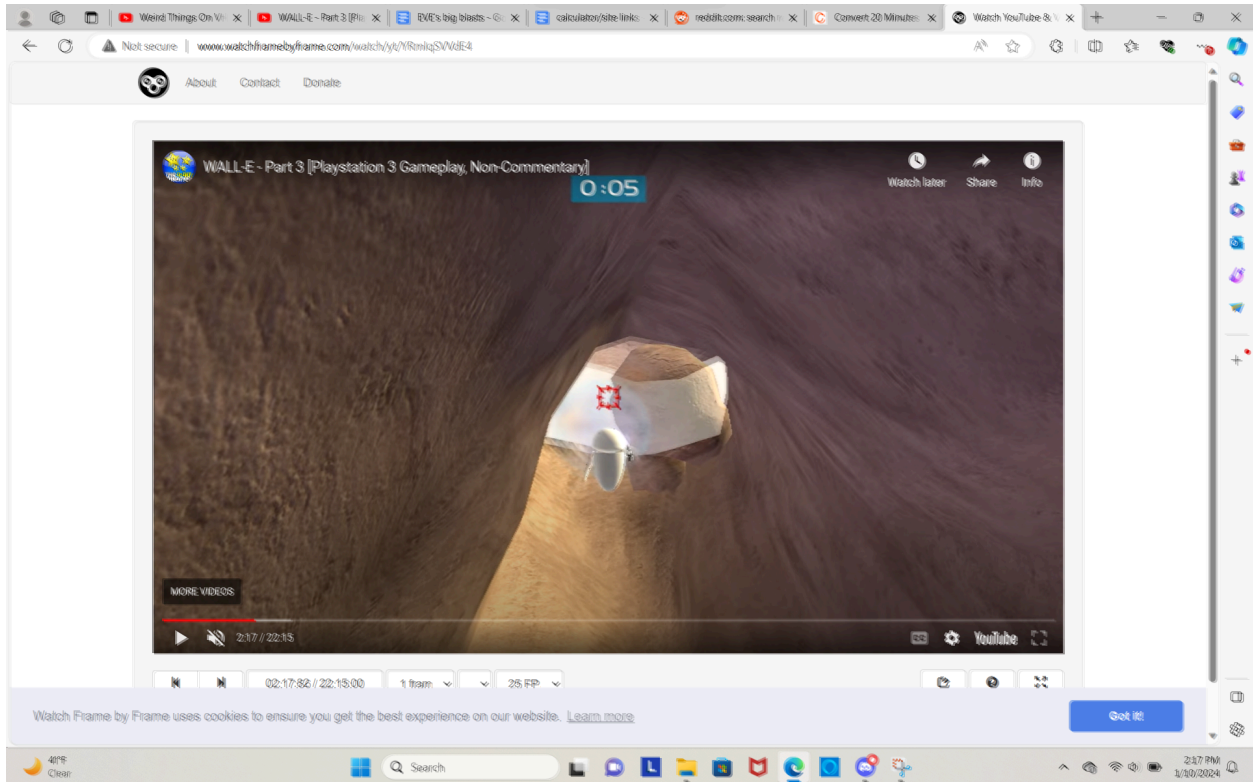
- Third little r: 27 pixels (91.53)
- Third part big R: 75 pixels (254.25)
- Third part height: 52 pixels (176.28)
- Third part volume: 1124448876 cm

- Total volume: 1497068915 cm
- Energy: 38474671115500 joules, 9.196 kilotons

Third rock (sphere)

- Radius: 254.25 inch
- Volume: 1128167535 cm
- Energy: 28993905649500 joules, 6.93 kilotons

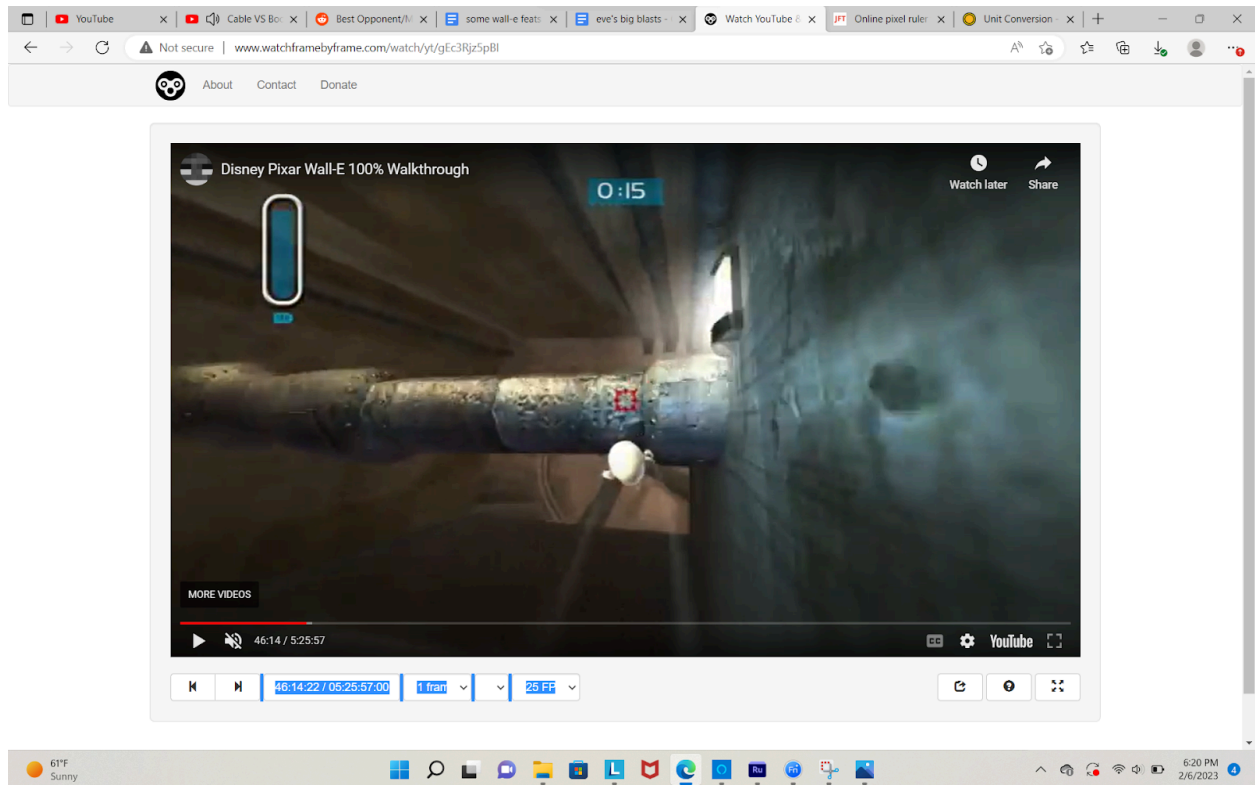
When looking at this I found a 4th rock (sphere)



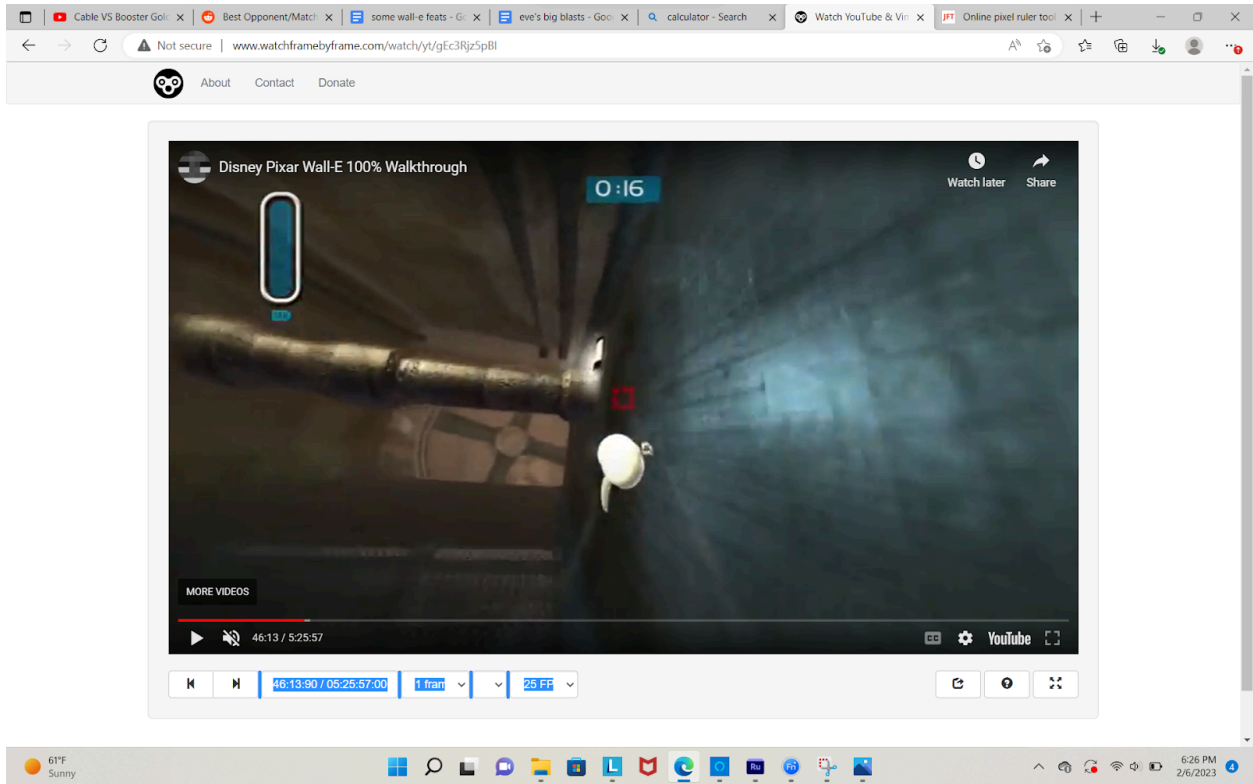
- Diameter of 2nd rock: 161 pixels (2.54838509317 inches per pixel)
- 4th rock diameter: 99 pixels (252.290124224 inches)
- Radius: 126.145062112 inches
- Volume: 137784853.26375 cubic centimeters
- Energy: $3.54107072888e12$ j, 846.336 tons

- Total energy: $7.12935599325e13$ joules, 17.0395697735 kt

Big pipe

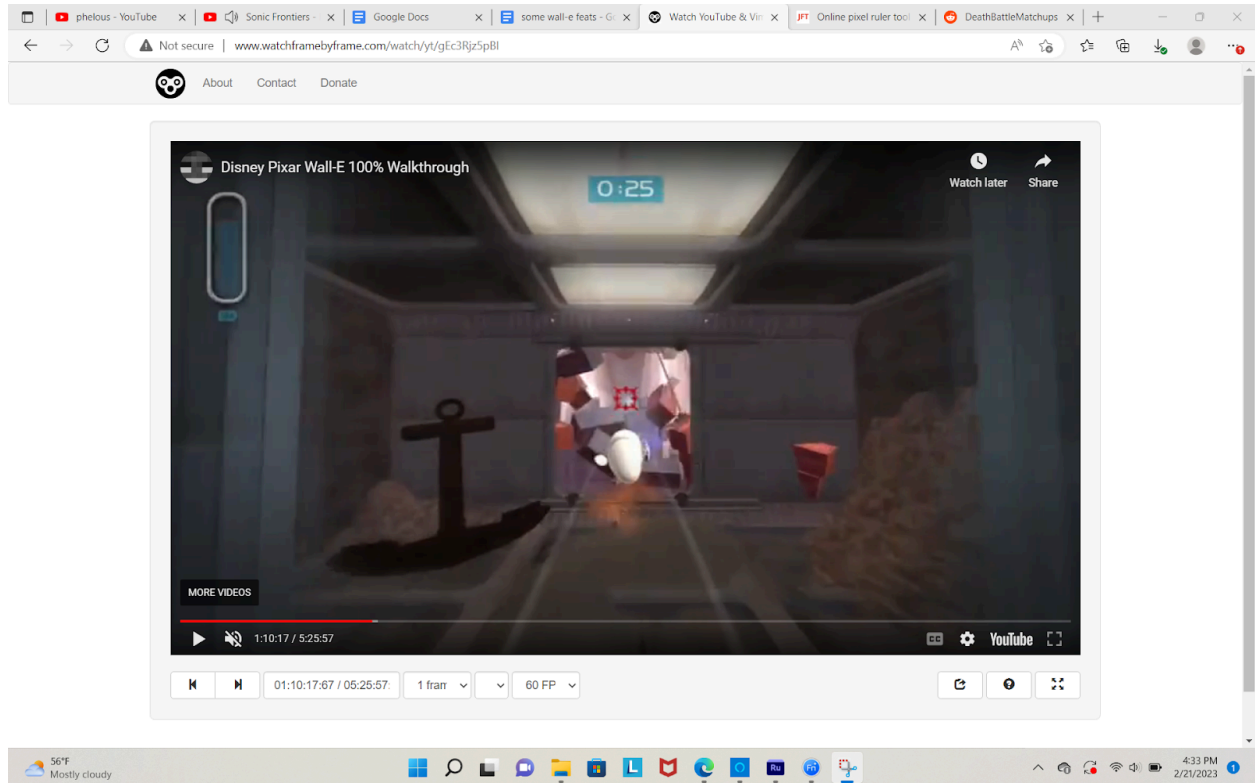


- Height of eve (50.79): 69 pixels (0.74 inches per pixel)
- Pipe height part 1: 189 pixels (139.1 inches)

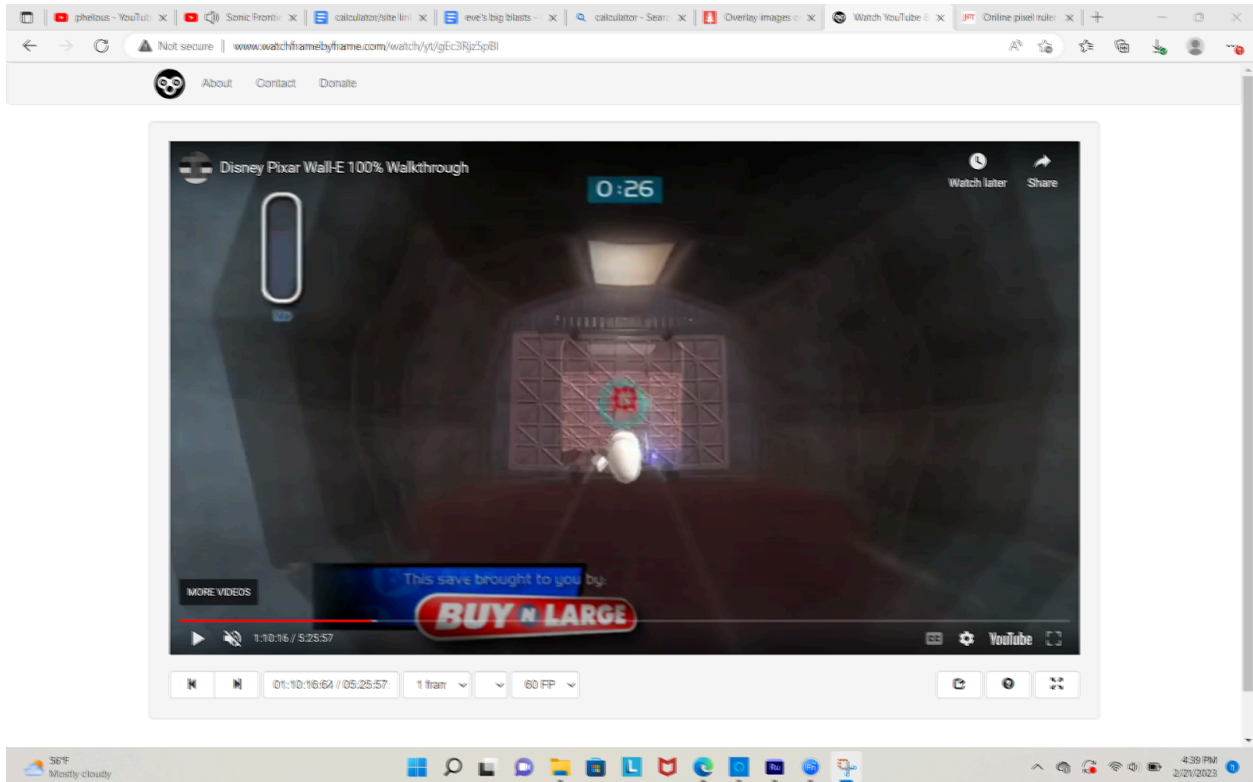


- Pipe height part 1: 80 pixels (1.74 inches per pixel)
- Length of pipe: 653 pixels (1135.35 inches)
- Volume: 282723720.218 cm
- Vaporization of iron: 60915.7 J/cc
- Energy: 17222398127520 j or 4.1 kt

Big wall



- Eve height (50.78 inches): 96 pixels (0.53 inches per pixel)
- Entrance width: 1167 pixels (617.94 inches)



- Entrance width: 184 pixels (3.35 inches per pixel)
- Wall width: 336 pixels (1127.23 inches)
- Wall height: 220 pixels (738.1 inches)
- $72 \times 1127.23 \times 738.1 = 59904609.336$ inches or 152157707.7 cm
- The weight of steel: 0.2833 pounds per square inch
- Weight of gate: 16970975.8249 lb or 7697898.8 kg
- Vaporization energy of steel: 7 mj per kg
- Energy: 12.8 kilotons