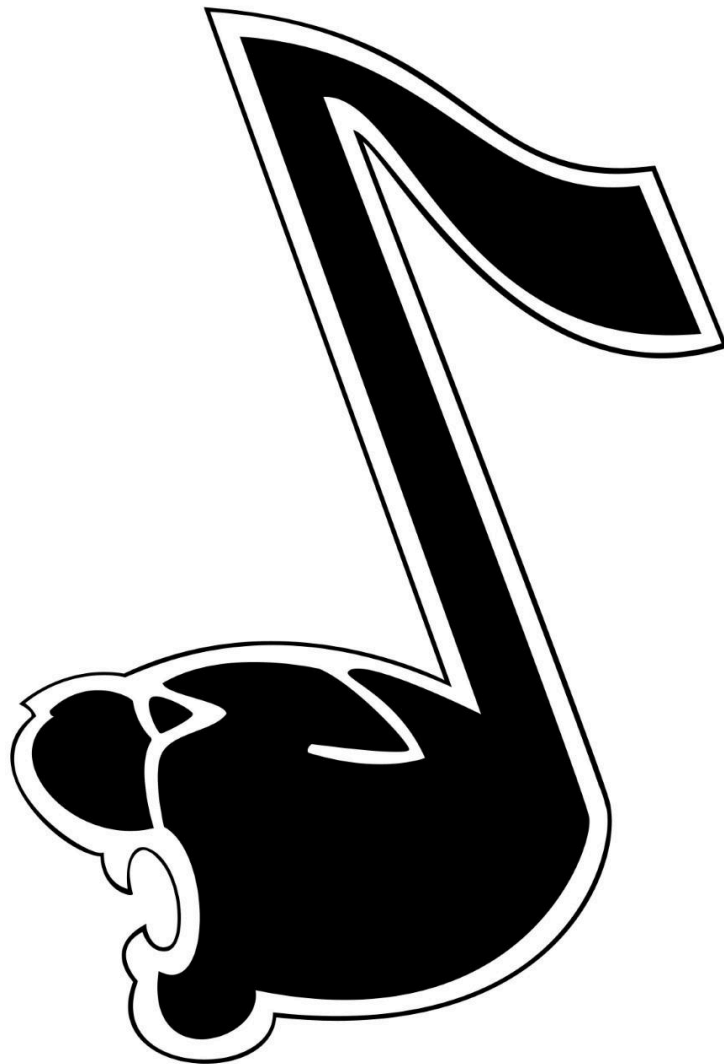


Strath Haven High School Panther Marching Band Handbook 2024-2025



Mr. Nicholas Pignataro, Director
(610) 892-3470, Ext. 2135

npignataro@wssd.org
npignataro@wssdgmail.org



Table of Contents

[Description, Purpose, Goals and Objectives](#)

[Official Communication Information](#)

[Summer Rehearsal Information](#)

[Regular Season Schedule](#)

[Uniform Fittings/Payment Information](#)

[Uniform Care Expectations](#)

[Uniform Policy for Performances and Warm-Up](#)

[Class Attendance Policy](#)

[Weather Plan for Performances](#)

[General Expectations](#)

[Typical Weekly Expected Routine for all students](#)

[Evaluation \(Grades\)](#)

[Appendix A: Instrumental Music Grading Rubric](#)

[Appendix B: Band Front Grading Rubrics](#)

[Appendix C: Marching Band Staff Contact Information](#)

[Appendix D: Student Leadership](#)

[Appendix F: General Expectations Behavior Chart](#)

[Appendix G: The SHHS Band Boosters](#)

Photo credits: Charlotte Horetsky '24, Matthew Ramirez '26, Kelly Montague '25, Kai Lincke '22,
Matthew Chen '23

[Back to table of contents](#)



Description: The Panther Marching Band is a visible representation of Strath Haven High School's commitment to musical excellence. The season begins with summer leadership and full band camp and continues with football game performances, outdoor and indoor concerts, and marching in local holiday parades. Band members learn instrumental and dancing techniques to present engaging performances. Students focus on instrumental or band front performance with opportunities to serve in crucial leadership positions. The Panther Marching Band's 400 student members engage in community building and inclusion, encouraging and spreading Strath Haven's spirit and heritage. The Panther Band is the largest band in Pennsylvania and the second-largest in the country.

Purpose: The Strath Haven Panther Marching Band provides a large portion of the student body with the opportunity to experience and perform high-quality and varied music. Rehearsals and performances are designed to increase students' instrumental and dance competency, to develop advance citizenship skills as a member of a complex organization, to include students who might otherwise be unable to participate in indoor classical music concert ensembles, and foster the spirit of pride in the Wallingford-Swarthmore School District.

Overall Goals and Objectives:

General Goals:

1. To provide students with the opportunity for creative expression, aesthetic response, and a sense of personal and social accomplishment through instrumental music, field show, and fostering community spirit through performance medium.
2. To provide an atmosphere that promotes student understanding and application of the self-discipline necessary for musically effective ensemble communication and participation.
3. To provide an inclusive environment for students to discover his or her level of musical/movement ability and encourage students to explore opportunities and possibilities available to them as musicians.
4. To foster those qualities in students that are necessary for effective application as performers and creators of music and dance.
5. To foster student understanding and application of the necessary skills for effective ensemble musicianship:
 - a. Consistent active listening
 - b. Melodic and rhythmic understanding and accuracy
 - c. Appropriate sense of ensemble balance and blend/ensemble visual balance
 - d. Accurate sense of intonation
 - e. Consistent application of dynamics and tempi/consistent and controlled movements
 - f. Appropriate expression
 - g. Understanding and application of articulation, phrasing, and style/movement
 - h. Instrumental technique and facility/dance and flag technique and facility



- i. Sight-reading ability/sight-learning ability
6. To convey to audiences the musical and expressive affect inherent in each performance piece.
7. To promote student appreciation for and understanding of quality instrumental music repertoire.
8. To ultimately enable all participating students to become intelligent consumers and producers of instrumental music.

Educational Objectives

1. Consistently maintain a positive learning environment.
2. Consistently develop appropriate individual and ensemble tone production/movement execution.
3. Consistently develop musical ensemble balance and blend.
4. Consistently develop curate ensemble and section intonation/section visual unity.
5. Consistently develop appropriate expressive qualities.
6. Consistently develop appropriate use of phrasing, articulation, and dynamics.
7. Consistently develop accurate interpretation and application of style.
8. Consistently develop sensitivity and accurate response to conducting.
9. Consistently develop accurate application of musical/movement terminology.
10. Consistently develop correct playing posture and breath support/dance posture.
11. Varied, flexible rehearsal experiences to accommodate varying learning styles and needs.
12. Acceptable levels of sight-reading/sight-learning proficiency.

Official Communication Information

Join Schoology Group with code: 4PZK-6MX5-CQ6N4. Be sure you are joining a group and not a course. You will be automatically enrolled in the Schoology Course on the first day of school.

Marching Band Instructors and student leadership may choose to communicate in other ways (Remind app, closed Facebook group, Instagram, X, etc) but these methods are considered supplemental to Schoology, official email, and Charms Office Assistant communication (for parents/guardians).

Summer Rehearsal Information

Summer preparation is the most important key to meeting the high standards of the Panther Marching Band. Marching Band is a class that meets during the school day. Summer preparation is crucial.

Leadership Camp- Monday, August 12th-Friday, August 16th 8:00am-3:00pm (ROLLING START)

Only designated student leaders attend this camp.
NOTE: Rolling start: Executive Council ONLY starts Monday. ALL leaders called Tuesday through Friday.
The Band sets very high standards for Student Leaders and expects them to attend these sessions





to prepare for the full band arrival the following week. Class attendance policies go into effect this week for leaders only. This is a very exciting week for leaders as they get to catch up from the summer break, learn new drill, learn new music, complete a fun day of team-building exercises, and learn teaching strategies that will prepare them to guide the entire band. The week ends Friday welcoming new students during orientation.

Drumline Camp- Monday, August 12th-Friday, August 16th 8:00am-12:00pm

A great band starts with a great Drumline! All Drumline students attend these sessions to learn how to properly use and care for equipment, meet staff and student leaders, and rehearse music. This is a chance to work as a high-achieving drumline with many hard-working percussionists! Students bring a reusable water bottle (Band Boosters provides water cooler), two sharpened pencils, and sunscreen. Students **MUST** wear closed-toe shoes during outdoor rehearsals. Students wear light clothing designed for warm weather. Students must wear clothing that covers the torso.

Silks Camp- Tuesday, August 13th-Friday, August 16th 8:00am-11:00am

Silks students will attend sessions to build a strong foundation of basics, tosses, equipment care, and teamwork for a confident start to the season! Generally, 9th grade is the first time any Haven student has the chance to use a Silks flag. This week is designed to give students that comfortable head start. Students bring a reusable water bottle and sunscreen and should stay close-toed shoes and comfortable, athletic clothes.

Pit Musician Technique Session-Thursday, August 15th 1pm-2pm

Students assigned to the Pit will have a one-day drumming technique session with Mr. Rudolph on Thursday, August 15th 1pm-2pm.

- Pit Musicians play drum set, xylophones, and auxiliary percussion and play in front of the Band.
- Students perform in the stands, too.
- Xylophonists may be able to march with marching bells in Halloween, Veterans' Day, and Florida Parades.
- All Pit Members march across the bridge and can march in Honor Guard for parades. That includes carrying the American and Pennsylvania flags plus our Band banners.
- Pit musicians will learn marching basics but do not have specified marching drill.
- Pit musicians usually form a tight bond!



9th Grade/New Student Orientation One-Day Camp-Friday, August 16th 8:00am-11:00am

First-year Marching Band students attend a pre-Band Camp session to learn expectations, review music, meet band "siblings," find storage lockers, meet the marching band staff, and learn field marching basics. Returning students will join new members at 11am for a music rehearsal. Students bring instruments, music from this packet, a reusable water bottle (Band Boosters provides a water cooler), and sunscreen. Students **MUST** wear closed-toe shoes during outdoor rehearsals. Students wear light clothing designed for warm weather. Students must wear clothing that covers the torso.

Full Marching Band Camp-Monday, August 19th-Friday, August 23rd 8:00am-3:00pm



Band Camp is the biggest reason that students feel successful in our Band! Students must attend every day of camp and remain on campus for the full day. Band Camp, like every Marching Band rehearsal, is considered class and class attendance policies go into effect for this week. Students participating in athletics must inform the Band Director and Instructor of their plan to equitably split their time between Band Camp and practices/games. Students bring bagged lunch, a refillable water bottle, instruments, two sharpened pencils, and sunscreen. Students **MUST** wear closed-toe shoes during outdoor rehearsals. Students wear light clothing designed for warm weather. Students must wear clothing that covers the torso.

Regular Season Schedule 2024-2025

Once classes begin, Marching Band is a regular class and adheres to the same attendance policy as other Strath Haven classes. This class meets on Tuesday, Thursday, and Friday each week during 5th block. In addition:

Monday-Friday August 12th-16th:

- Leadership Camp 8:00am-3:00pm (ROLLING START)
- Drumline Camp 8:00am-12:00pm

Tuesday-Friday August 13th-16th

- Silks Camp 8:00am-11:00am

Friday August 16th: New Student Orientation
8:00am-11:00am

Monday-Friday August 19th-23rd: Full Band Camp
8:00am-3:00pm

Friday August 23rd: Away Football at Interboro 7:00pm

Thursday August 29th: Away Football at Penncrest
7:00pm



Friday September 6th: Away Football at Ridley 7:00pm

Friday September 13th: Home Football vs. Radnor 7:00pm

Friday September 20th: Home Football vs. Garnet Valley 7:00pm

Monday September 23rd: Evening Class 6:30pm-8:30pm

Friday September 27th: Away Football at Marple Newtown 7:00pm

Saturday September 28th: Penncrest Festival of Bands 4:00pm-9:00pm

Saturday October 5th: Home Football vs. Conestoga 7:00pm

Thursday October 10th: Home Football vs. Harriton 7:00pm-BAND NIGHT

Saturday October 19th: Away Football at Lower Merion 1:00pm

Friday October 25th: Home Football vs. Springfield 7:00pm-SENIOR NIGHT

Saturday October 26th: Media Halloween Parade 11:00am

Friday November 1st: playoff game 7:00pm (Team and Location TBD)

Wednesday November 6th: Marching Band Outdoor Showcase Concert 7:00pm

Friday November 8th: playoff game 7:00pm (Team and Location TBD)

Monday-Tuesday November 11th and 12th: Showcase Concert rain dates 7:00pm

Monday November 11th: Media Veterans' Day Parade 11:11am

Friday November 15th: playoff game 7:00pm (Team and Location TBD)

Friday November 22nd: playoff game 7:00pm (Team and Location TBD)

Friday November 29th: playoff game 7:00pm (Team and Location TBD)



Friday December 6th: playoff game 7:00pm (Team and Location TBD)



Uniform Fittings

All students must be fitted for Marching Band Uniforms. Uniform sizes are distributed on a first come, first served basis. Attend the earliest sessions to improve your chances of securing a more properly-fitting uniform.

[All students must schedule a time to be fitted via calendly.com. Click here to schedule.](#) Band Front and Instrumentalist students are sometimes scheduled at different times. Families with both Band Front and Instrumentalist students: volunteers will hold all uniforms and set them aside so you can pick them up together at your last scheduled fitting. Families can pay at any of the fitting appointments for all fittings.

Payment Information

The SHHS Band Booster organization maintains our Band uniforms and equipment. This requires families to support the effort through one-time purchases and annual fees. **However, through the support of the Wallingford Swarthmore Music Association and the SHHS Band Boosters, Marching Band fees shall not be a barrier to participation in the Band.** If for any reason you need financial relief to participate, please fill out this form: [Marching Band Financial Aid Request](#).

	Instrumentalist NOT Tuba/Drumline	Instrumentalist NOT Tuba/Drumline borrowing school instrument	Instrumentalist Tuba	Instrumentalist Drumline	Band Front
Uniform	\$50	\$50	\$50	\$50	\$50
Shoes/Boots	\$45	\$45	\$45	\$45	\$65
Gloves	\$10	\$10	\$10	N/A	\$10
Berets	N/A	N/A	\$20	N/A	N/A
Body Suits	N/A	N/A	N/A	N/A	\$35
Tights	N/A	N/A	N/A	N/A	\$20
Socks	\$5	\$5	\$5	\$5	N/A
#12 T-Shirt	\$20	\$20	\$20	\$20	\$20
Rental Fee	N/A	\$50	\$50	\$50	N/A
Total Fee	\$130	\$180	\$200	\$170	\$200



Recommended, but optional: (these items conform with Uniform Policies for Performance and Warm-up)

	Instrumentalist NOT Tuba/Drumline	Instrumentalist NOT Tuba/Drumline borrowing school instrument	Instrumentalist Tuba	Instrumentalist Drumline	Band Front
Official Haven black backpack	\$25	\$25	\$25	\$25	\$25
Band Front Fleece Jacket	N/A	N/A	N/A	N/A	\$40
Band Front Sweatpants	N/A	N/A	N/A	N/A	\$25

Uniform Fee– Includes repairs and end of the year cleaning. Students are responsible for cleaning throughout the year.

#12 T-Shirt– ALL members are required to purchase a t-shirt. (*Worn for TV appearances and under uniform coats. Returning members purchase only if needed.*)

Shoes/Boots– Shoe and boot samples are provided at the time of fitting. Students will order the correct size. Socks should be worn to try on shoes and boots.

Students keep all purchased items. Each item is a one-time purchase unless students outgrow, destroy, or lose the item. Uniform and rental fees occur every year.

Completing Uniform Fitting Payments

Students can take uniform items home once payment is complete.

There are four ways to pay:

1. Pay with credit card at time of fitting with secure swipe/tap card reader.
2. Pay by check at time of fitting. Write check to “SHHS Band Boosters.”
3. Pay with cash at time of fitting.

Uniform Returns: Students must turn in uniforms after the last band event. Students turning in uniforms late should return them to the band room, labeled with their name for easy identification. Students not returning uniforms will be put on the obligation list in the office.

Uniform Care Expectations

Students are responsible to maintain individual uniforms. The School District, with taxpayer funding, provides these uniforms for our students. It is crucial that students learn responsible care habits to make the most of these District resources. Students must bring broken, damaged, or defective uniforms to the Band office immediately upon noticing an issue. Once issued, all uniforms are to be kept at home for storage during the course of the season until collected



Uniforms

1. Hang uniform immediately after use and air out overnight. Keep the uniforms outside of the garment bag overnight.
2. Check for any dirt/spots and brush off or wipe with damp cloth.
3. Air dry thoroughly before storing wet/damp uniforms in closet. Do not store wet uniforms in garment bag.
4. Dry clean uniforms if dirty or stained. Take uniforms to cleaners and do NOT wash in home machines.
5. Store uniforms in garment bags while traveling.
6. Take uniforms home from school. Uniforms may not stay on school property during the season.
7. Do not remove garment tags and/or barcodes.

Hats (Shakos)

1. Air-out hat overnight after use. Do not place in hat box until the following day.
2. Wipe wet spots with dry, lint-free, cloths.
3. Store hat in unlatched box the following day. Leave box partly open.
4. Store NO other items in hat box. (food, wet gloves, plastic bags, etc.)
5. If necessary, hat vinyl may be wiped with ArmorAll Cleaning Wipes or other mild cleaning wipes.
6. If necessary, wipe hat fabric with lint-free moist cloth.
7. Do not remove tags and/or barcodes.

Band Shoes

1. Air out overnight. (continued)
2. Wipe shoes with a dry cloth after each use.
3. Do NOT leave socks in the shoes.

Repair/Replace Responsibilities

Students who lose or damage uniforms beyond reasonable wear-and-tear are responsible to pay the School District for the cost of a new uniform item:

Uniform Coat \$380

Uniform Trousers \$172

Hat (Shako) \$90

Hat (Shako) Box \$15

Plume \$24

Garment Bag \$17

Raincoat \$50

Band Front Bib \$127

Skirt \$98

Uniform Policy for Performances and Warm-Up

Full Uniform required times: any time outside of a bus or school building where public might see you.

Warm-Up Uniform required times: on grassy knoll or 1st floor courtyard if Director allows it, walking through the school hallways, being on school property, on school buses.



Full Uniform-Instrumentalists: Band hat (beret for tuba players), Instrumentalist jacket, #12 t-shirt underneath jacket, black gloves (no gloves for percussion) pants, shorts/pants underneath pants), black socks, black band shoes, hair long enough to touch shoulders tied, braided, or in a pony tail.

Warm-Up Uniform-Instrumentalists: #12 t-shirt, pants, black socks, black band shoes; hat, jacket, and gloves are nearby, hair long enough to touch shoulders tied, braided, or in a pony tail. Instructors and students develop a solution for hair that is not able to be braided.

Full and Warm-Up Uniform-Band Front: hair in braids or pony tail with appropriate hair tie, black body suit, bib, skirt or black pants, stockings, black boots, gloves. Hair long enough to touch shoulders tied, braided, or in a pony tail. Instructors and students develop a solution for hair that is not able to be in a pony tail.

Alternate Uniform: #12 Polos

#12 polo worn on top, appropriate-for-school bottoms. Bottoms suggestions include athletic-style shorts, athletic-style pants, comfortable shorts, leggings, athletic-style/activewear skirts, bottoms that look nice but allow for movement. Closed-toed sneakers required. Bottoms and sneakers can be any color and any style that are appropriate for school. Hair and jewelry requirements are the same as the full uniform.

Uniform notes for ALL students:

- Small backpacks may be worn during marching to stadium/crossing the bridge.
 - Minimize the amount of things worth carrying.
 - Place reusable water bottles in backpacks. (Band Boosters provides water cooler)
 - Multiple students can share a bag, requiring less bags.
 - Bags must be completely black except for Strath Haven-specific logos or writing.
 - Logos and writing that are not Strath Haven-specific must be smaller than 3" by 5."
- Additional cold-weather layers may be worn under uniform and must be black.
- Students may wear scarves and ear muffs that are black, silver, white, or any combination of these colors.
- Band Front students may wear hooded sweatshirts, zip-up jackets, and sweatpants over uniforms. These must be black, silver, or white. They do not have to be Strath Haven-specific.
- Students may wear stud earrings or hoops that are tight to the ear and leave no space between the earring and the ear.
- Students may wear a wrist watch.
- No bracelets or visible necklaces are permitted with the uniform.
- If raincoats are issued, students place nothing in pockets. Hoods are worn down and unzipped to show Panther logo. Raincoats must be fully buttoned top-to-bottom with the exception of the topmost button.

Class Attendance Policy

All Band rehearsals and performances are mandatory. Every single student is very important and valuable to the overall function of the Band. While the Band has many students, each deserves the time and attention of the professional staff and fellow student members. Band participation is a serious honor and commitment; the Director expects that students will adjust personal schedules so that they may properly participate. While the Band attendance policy is firm, it is



designed to meet students' needs. The Director promises to help and accommodate any student who actively communicates scheduling concerns.

Some conflicts are difficult to avoid because other programs schedule activities during class time. That makes it more difficult for students to make music and earn arts credit. The Director is willing to help students if they communicate with him. Respect this class time by moving activities that can be scheduled to other days. Extra help sessions, appointments, meetings, and other individual activities can be moved to non-class days with planning. If a teacher requests you to come to extra help during this class, you are required to ask the teacher if you can attend on a day in which you do not have this class. The teacher, a professional, should understand that to pull you away from class time will make it harder for you to earn arts credit. The Director can help you communicate with other adults if you ask me to.

Some students are involved in so many music classes and activities that there is no way to avoid conflicts. Again, this is understandable. In that case, it is up to the student to schedule make-up sessions with the Director so that you can meet class requirements.

Absence and Attendance FAQs

[Click here.](#)

Absences:

Students must provide a written explanation for any absence, regardless of reason.

- Request BEFORE absence or before noon the next school day: [complete this form](#). If absence reason is "other," follow up with adult/supervisor note.
- Excuse requests and notes are not accepted after noon the next school day.
- Ms. Chadwick's email address is lchadwick@wssd.org

Excused absences:

Students are permitted three (3) excused absences per semester. Excused absences require a pass/email from a teacher, a doctor's note, or an email/paper note from a guardian. Students can report their own absences for chorus and away athletics, only.

Excused absences include absence from school day due to illness, absence from school day due to other school-approved reason, medical specialist appointment that cannot reasonably be scheduled at another time, college class meeting, school-sponsored athletic games that have been pre-approved by the Director, school-sponsored activities that cannot reasonably be scheduled at another time, or another absence deemed acceptable at the Director's discretion.

Excuse notes must be submitted by noon the next school day in order to be accommodated. After noon the next school day, the absence remains unexcused regardless of reason. The Director may award points back to students at their discretion.

Students with 3 or more excused absences are required to schedule a lesson with the Director via calendly.com/npignataro to work on music and to be caught up.

Students with 1 or more unexcused absence are required to schedule a lesson with the Director via calendly.com/npignataro to work on music and to be caught up.

Unexcused absences:

[Back to table of contents](#)



Students are permitted zero (0) unacceptable absences per season before negatively affecting semester grades.

Multiple Absences Between Band Performances:

Students with multiple absences in a single timespan between Band performances will not be permitted to perform a halftime show or other performance type without the explicit approval of an adult staff member. Adult band staff has the right to designate any student with Reserve status. This promotes safety because students who are absent from rehearsals could cause injury on the field or other locations if they are unfamiliar with the performance. This also encourages respect for classmates who attended classes and have prepared for the performance. (Example: students who are absent for 2-3 classes within a week must get permission from their supervising adult Band staff member to perform at the upcoming halftime show).

Plan for frequently-occurring absences:

Strath Haven High School encourages students to be involved in many organizations and activities. It is reasonable that Band members may have frequent absences due to pre-approved, frequently occurring events. The Director will make every effort to accommodate students involved in multiple activities and will always be supportive in students' diverse interests. For these pre-approved cases, the Director and student will develop a series of alternate assignments that benefits both the student and the Band to be submitted on a schedule agreed upon by the Director and student. These assignments will not be time-wasting nor unreasonably time-consuming, but they will ensure active participation for students who are unable to be physically present for Band events.

Early dismissals for student athletes

Haven is unique--40% of all fall sports teams are Band students! We encourage you to play a school sport and join the Band.

Athletic Director, Ms. Lynelle Mosely, and I agreed on this policy.

Dismissal times for student athletes:

Practices-15 minutes before practice starts

Home contests-60 minutes before contest starts

Away contests-60 minutes before bus leaves

Weather Plan for Performances

Because Marching Band is largely an outdoor activity, students must be prepared to participate in various weather conditions. The Band will make every effort to attend football games in rainy weather while considering student safety and equipment/uniform protection. Band staff closely watches several weather forecasts for a week leading up to a performance. For the most flexibility, the staff monitors the forecast right up until game time before making a final weather plan decision since forecasts are sometimes inaccurate.

Weather Plan A- Fair Weather

Band performs as scheduled in full uniform.



Weather Plan B- Heat

Band performs as scheduled in full uniform with option of removing gloves, hats, and jackets at the Director's discretion.

Weather Plan C- Light Rain/Threat of Rain

Band performs in full uniform as scheduled wearing raincoats. The Band performs in the stands. Students bring instrument cases to stadium in case rain starts and instruments must be put away and protected during game. The Band remains in the stands to cheer on the football team and will begin playing again when rain stops. The Band will not perform a halftime show if the field is too wet due to slippery conditions--students marching shoes and boots make marching on a wet field difficult and unsafe. If rain becomes heavy, students will put instruments in cases for the remainder of the game but stay to cheer on the football team.

Weather Plan D- Moderate to Steady Rain

Band attends football game in full uniform wearing raincoats. Students pack instrument cases to protect instruments from rain. The Band will not perform a halftime show if the field is too wet. The Band will not perform a halftime show if the field is wet due to slippery conditions--students marching shoes and boots make marching on a wet field difficult and unsafe. If rain becomes heavy, students will keep instruments in cases for the remainder of the game but stay to cheer on the football team while considering student safety.

Weather Cancellation

The Band performance is canceled if lightning is detected in the area or if the Athletic Department has deemed the game unsafe to play.

General Expectations: (see Appendix F for Behavior Chart)

Behavior:

- Follow directions of student leaders and staff members.
- Do not bully anyone. If you have something negative to say, don't say it.
- Do not use inappropriate language or gestures.
- Don't talk when staff members are talking.
- Maintain a general sense of respect for all members of the group.
- Come to class and performances with a positive attitude.

Learning Spaces:

- Throw trash appropriate cans.
- Put cases in lockers, do not leave cases on floor.
- Touch your own instrument only, don't touch anything else.
- Do not graffiti anything. Do not put stickers anywhere or on anything.
- Pick up trash in classrooms or on fields even if it is not yours.
- Place chewed gum in appropriate cans.

Storage Spaces:

- Roll flags and place in proper storage locations.
- Lock lockers.



- Place trash in appropriate cans.
- Do not store trash or food in lockers.
- Put equipment and instruments where it belongs.

Rehearsals:

- Get to rehearsal location on time.
- Don't hang out in the Band room or hallways instead of quickly getting to class.
- Don't leave early without permission.
- Don't put instruments down without Director permission.
- Don't falsify attendance records.
- Wear close-toed-shoes with backs to all rehearsals.
- Do not leave cadence marching line before being dismissed by adult instructor.

Games/Performances:

- Follow staff member instructions.
- Remain in full uniform always.
- Follow school code and society norms while in uniform and working with the Band.
- Students should remain standing in the stands for the performance quarters, only sitting in the case of personal health, brief pauses to do things like go into one's bag. There might be some exceptions when staff will tell the Band sit, such as in the case of a player injury on the field.
- No talking on the field during performances, period. (calling counts/directions is permitted for leadership students ONLY)
- Keep food and drinks away from uniforms whenever possible.
- No bathroom breaks during the first quarter.
- Snack bar visits occur after the halftime performance and during third quarter only.
- Any time students go to the bathroom, they must travel in groups of two, signing out and back in with a staff member. Two groups of two are allowed out of the stands at once. Exceptions can be made in cases of emergencies.
- Be in stands ready to play/dance by 2 minutes left in the third quarter.
- Do not run to snack bar before dismissal.
- Do not leave the game early. You will be caught.
- Do not change out of your uniform.
- Boots must remain on and zipped.
- Gloves associated with your team must be worn at all times.
- Skirts may not be rolled.
- Do not leave the gated stadium area.
- Use sign-out form if you leave the bleachers.
- Use sign-out form if you require an early dismissal requested by your parents/guardians.
- Do not leave cadence marching line before being dismissed by adult instructor.
- Throw away trash. Assist parent/guardian volunteers who are picking up trash at end of event.



Equipment care:

- Do not throw reeds or break them intentionally.
- Do not break instruments.
- Do not break drum sticks.
- Students must replace broken drum sticks with cash or check written out to “Strath Haven High School”
 - Bass drum mallets: \$30 per pair (even if only one stick breaks)
 - Snare drum sticks: \$12 per pair (even if only one stick breaks)
 - Students will not perform with the Band until they have paid for or replaced broken sticks. Students concerned about paying for new sticks should see the Director immediately.
- Report instrument or equipment repair needs to adult instructor immediately.
- Do not break lyres, folios, flags, uniform items, or rip music.
- Do not chew gum during class.

Self-Care:

- Be hydrated at all times
- [Heat safety video](#) and [heat safety slides](#)
- Eat healthy meals
- Bring snacks with you for rehearsal/game breaks
- Alert adult staff members if you are feeling ill
- Check in on other Band members to make sure they are okay
- Have a hobby and enjoy it every week
- Take one day “off” per week- at least 12 waking hours (on your personal time). You may have to spread your 12 hours out over multiple days.

Typical Weekly Expected Routine for all students:

After Band Camp has finished:

Sunday:

- Check for Director’s weekly email
- Check Google Classroom for two-week rehearsal and performance schedule
- Complete Google Form for absence notification: [Click HERE](#)

Monday:

- Final day students must notify director of Friday game performance absence: [Click HERE](#)

Tuesday:

- 5th Block Class: 2:05pm-3:00pm
 - Move quickly to get equipment.
 - Rehearsal most likely split on this day with teams going to different rehearsal locations.
 - Downbeat on King Field or other rehearsal location is 2:20pm. Do not be late.
 - Return all equipment to proper locations. Throw away trash. Lock lockers.
 - Marching Band staff completes locker and equipment inspections for grades.



Thursday:

- 5th Block Class: 2:05pm-3:00pm
 - Move quickly to get equipment.
 - Downbeat on King Field or other rehearsal location is 2:20pm. Do not be late.
 - Return all equipment to proper locations. Throw away trash. Lock lockers.
 - Marching Band staff completes locker and equipment inspections for grades.

Friday:

- 5th Block Class: 2:05pm-3:00pm
 - Move quickly to get equipment.
 - Downbeat on King Field or other rehearsal location is 2:20pm. Do not be late.
 - Return all equipment to proper locations. Throw away trash. Lock lockers.
- Football Game Performance (HOME)
 - **5:25pm:** Drumline Call Time
 - **5:35pm:** Downbeat Drumline Warm-Up: grass in front of SHHS Gym
 - **5:50pm:** General Call Time (all others)
 - **6:00pm:** Drumline take 5 minute break
 - **6:05pm:** Downbeat Instrumentalist and Band Front warm-up: grass in front of SHHS Gym
 - Downbeat uniform for instrumentalists: Shoes, black socks, pants, #12 T-Shirt. Hat, gloves, and coat are nearby.
 - Downbeat uniform for Band Front: Full uniform. Hair is already braided.
 - **6:25pm:** March across bridge.
 - **Pregame:** Perform My House, Minnesota Rouser, Star-Spangled Banner
 - **First Quarter:** Stand up. No bathroom breaks. No food in stands. Water bottles are permitted. Do not use phones except to take a quick, appropriate picture or selfie.
 - **Second Quarter:** Stand up.. No food in stands. Water bottles are permitted. Emergency bathroom breaks only. Students must inform staff member and travel with a partner. Do not use phones except to take a quick, appropriate picture or selfie.
 - **Halftime:** Performance. No talking on the field while at attention and/or while performing. Stand for entirety of opposing band's show. Applaud loudly and with spirit to show support for opposing bands. Do not use phones. Remain inside gated stadium grounds.
 - **Third Quarter:** Enjoy snack bar. Use bathroom. Relax and chat. Be in the stands ready to play by 2 minutes left on the third quarter clock. Phone use is permitted. Remain inside gated stadium grounds. Do not enter student section stands. Do not





remove uniform except warm-up uniform is permitted during warm-weather games.

- **Fourth Quarter:** Stand up. No bathroom breaks. No food in stands. Water bottles purchased from snack bar are permitted in stands. Use reusable water bottles when possible. Do not use phones except to take a quick, appropriate picture or selfie.
- **Post Game:** Perform Alma Mater. Line up on track. March to High School across the bridge. Remain in performance mode until entering the high school building.
 - Throw away trash. Hang uniforms up. Return equipment to appropriate locations. Lock lockers.
 - Phone use is permitted once students have entered the high school building
 - Optional leadership student meeting for all interested in attending (usually 20-30 minutes long).
 - Invite a friend to go out for pizza or ice cream!
 - Do not stay in the high school building after the leadership meeting.
- Football Game Performance (AWAY-times subject to change due to travel and traffic)
 - **4:45pm:** Drumline Call Time
 - **5:00pm:** Downbeat Drumline Warm-Up: grass in front of SHHS Gym
 - **5:20pm:** General Call Time (all others)
 - **5:30pm:** Drumline take 5 minute break
 - **5:35pm:** Downbeat Instrumentalist and Band Front warm-up: grass in front of SHHS Gym
 - Downbeat uniform for instrumentalists: Shoes, black socks, pants, #12 T-Shirt. Hat, gloves, and coat are nearby.
 - Downbeat uniform for Band Front: Full uniform. Hair is already braided.
 - **5:50pm:** Load buses
 - **5:55pm:** Buses depart
 - **6:25pm:** Unload buses at away stadium
 - **6:30pm:** March into away stadium
 - See schedule above beginning with “First Quarter”

All students ride buses back to SHHS. Please do not allow students to ride home in another way.

Evaluation (Grades):

Total earned points comprise regular grades.

A = 90-100

B = 80-89

C = 70-79

D = 60-69

F = 0-59

Semester grade = 50% performance assessment + 30% attendance/active participation + 20% online assignments.



Attendance scores begin at 30. Every unexcused absence results in point losses.. The grade is raised once students take steps to rectify. Please note, behavior infractions and equipment expectation failures will result in lowered active participation score by 3 points at the Director's discretion. Staff members keep active incident reports and will inspect storage areas once per week. Attendance, positive behavior, and taking care of equipment are the three components of the attendance/active participation grade. Simply coming to class is not enough if students exhibit negative behavior or disrespect toward equipment.

Marching Band staff members document behavior infractions and the Director informs students' families within one week of the report. Staff members document behavior infraction after asking students to change behavior for the second time, although they may document egregious behaviors after one verbal redirection. Two documented behavior infractions for a student result in a loss of performance privileges for that student with a 3-point attendance grade loss (plus the 3-points deducted from the infraction date. The Director has the discretion to override the point losses and restore performance privileges if students make an effort to communicate with staff members and change the behavior.

Performance scores begin at 50 using the 4-point proficiency rubric. (Appendices A and B)
Failure to complete the performance assessment results in a 0 score.

Online assignment scores begin at 20. Failure to complete the assignment results in a 0 score.



Appendix A

Instrumental Music Grading Rubric

	0: No effort	7: Developing	8: Approaching Standard	10: Meeting Standard	10+: Exceeding Standard
Pitch Accuracy (intonation)	No demonstrated effort.	Little to no accurate pitches. The few accurate pitches are insecure.	Some accurate pitches, there are frequently repeated errors; adjusted for current student achievement level.	An occasional isolated error, but most pitches are accurate and secure; adjusted for current student achievement level.	Essentially no errors. Pitch is centered and accurate.
Rhythmic Accuracy	No demonstrated effort.	No identifiable pulse or rhythmic feel. Rhythms are mostly inaccurate.	Beat/pulse is somewhat erratic. Some rhythms are accurate. Frequent or repeated rhythmic errors.	Beat/pulse is secure and rhythms are mostly accurate. There are few rhythmic errors.	Beat is secure and rhythms are accurate. There is a clear and steady pulse.
Tone Quality	No demonstrated effort.	Tone is unfocused and not centered. Little characteristic quality.	Tone is often focused, clear, and centered. Sometimes tone is uncontrolled in normal playing range. Extremes in range are usually uncontrolled; adjusted for current student achievement level.	Tone is focused, clear, and centered throughout the normal playing range. Extremes in range are sometimes uncontrolled; adjusted for current student achievement level.	Tone is consistently focused, clear, and centered throughout the range of the instrument. Tone is near professional quality.
Dynamic Expressions (Expression, Style, Phrasing)	No demonstrated effort.	Demonstrates no attention to dynamics or expression. Performance is unrefined.	Sometimes performs with dynamics and nuance that the score indicates; adjusted for current student achievement level.	Typically performs with dynamics and nuance as score indicates; adjusted for current student achievement level.	Performs with creative attention to dynamics and nuance in response to the score and increased musicality.
Articulation/Diction	No demonstrated effort.	Little to no secure attacks. No attempt made to execute markings.	Attacks are sometimes secure. Markings sometimes executed accurately as score directs.	Attacks are usually secure. Markings generally executed accurately as score directs.	Attacks are consistently secure. Articulation markings consistently executed accurately as directed by the score.



Appendix B

Band Front Grading Rubrics

Band Front Dance Rubric

Domains	0-39 Developing	40-45 Approaching Standard	46-50 Meeting Standard	50+ Exceeding Standard
Choreography Memory of the routine and execution of the moves looks true to the moves that were choreographed.	Demonstrates some knowledge of choreography, but unsure of some movements. Sometimes hesitates/ watches others and makes several errors.	Demonstrates knowledge of choreography. Keeps up with the group. Some errors (3-5 errors) causing brief pause in performance.	Demonstrates good knowledge of choreography. Keeps up with group. Few errors, however it does not interfere with performance.	Demonstrates excellent knowledge of the choreography. and does it well.
Technical skills Arm and foot placement, clean, moves are executed smoothly	Only some understanding of technical elements (ie. footwork, quality of movements, body positions) demonstrated in performance.	Dance performed with attention to most details of technique, but hasn't attained proficiency yet. Some technical errors.	Dance performed with attention to details of technique, has attained proficiency in dance style. Occasional technical errors do not interfere with performance.	Dance performed with great attention to quality of movement, body position, and placement on the field
Performance Skills Projection of eye contact and cheerful facial expressions towards the crowd. The dancer is confident with movements.	The dancer is generally focused, but only some attempts were made to grab the attention of the audience with eye contact and facial expression.	The dancer communicates with the audience through eye contact and facial and body expressions. Occasionally loses focus.	The dancer communicates with the audience through eye contact and facial and body expression. Is able to engage the audience despite occasional loss of focus.	The dancer draws the audience in to want to watch them and is able to engage the audience completely through their performance.
Rhythm/Tempo Staying on count and with the beats of the music.	Shows a basic understanding of tempo and beat, but falls behind and/or speeds up in places or makes errors in rhythm.	Generally accurate in beat, tempo, rhythms of dance sequences most of the time.	Accurate in beat, tempo, rhythms of dance sequences throughout the dance. Occasional beat inaccuracies do not interfere with performance.	Shows a complete understanding of tempo and beat and stays on rhythm throughout the dance.



Band Front Flag Rubric

Domains	0-39 Developing	40-45 Approaching Standard	46-50 Meeting Standard	50+ Exceeding Standard
Choreography Memory of the routine and execution of the moves looks true to the moves that were choreographed.	Demonstrates some knowledge of choreography, but unsure of some flag movements. Sometimes hesitates/ watches others and makes several errors.	Demonstrates knowledge of choreography. Keeps up with the group. Some errors (3-5 errors) causing brief pause in performance.	Demonstrates good knowledge of choreography. Keeps up with group. Few errors, however it does not interfere with performance.	Demonstrates excellent knowledge of the choreography. and does it well.
Technical skills Arm and Flag placement, clean, moves are executed smoothly	Only some understanding of technical elements (ie.flag movements, flag positions) demonstrated in performance.	Flags are performed with attention to most details of technique, but hasn't attained proficiency yet. Some technical errors.	Flag performed with attention to details of technique, has attained proficiency in flag movements despite occasional technical errors.	Flag performed with great attention to quality of movement, flag position, and placement on the field.
Performance Skills Projection of eye contact and cheerful facial expressions towards the crowd. The dancer is confident with movements.	The dancer is generally focused, but only some attempts were made to grab the attention of the audience with eye contact and facial expression.	The dancer communicates with the audience through eye contact and facial and body expressions. Occasionally loses focus.	The dancer communicates with the audience through eye contact and facial and body expression. Is able to engage the audience despite occasional loss of focus.	The dancer draws the audience in to want to watch them and is able to engage the audience completely through their performance.
Rhythm/Tempo Staying on count and with the beats of the music.	Shows a basic understanding of tempo and beat, but falls behind and/or speeds up in places or makes errors in rhythm.	Generally accurate in beat, tempo, rhythms of dance sequences most of the time.	Accurate in beat, tempo, rhythms of dance sequences throughout the dance.Occasional beat inaccuracies do not interfere with performance.	Shows a complete understanding of tempo and beat and stays on rhythm throughout the dance.



Silks Toss Rubric

Domains	0-4 Developing	5-10 Approaching Standard	11-15 Meeting Standard	15+ Exceeding Standard
Spin The rotation of the flag once it has been released due to proper prep	“Wild” partial rotation or less rotation due to lack of wrist flick or early catch.	Partial rotation due to lack of wrist flick.	Full rotation in the air after release.	Full rotation in the air after release. Goes straight up and straight back down for catch.
Technical skills Flag placement and the proper motions within the toss prep	Confusion regarding proper hand placement. Toss entirely one handed in the instance where two hands are needed. No wrist flick.	General proper direction with few apparent mistakes. Toss mostly only one handed in the instance where two hands are needed. No wrist flick.	Clear proper direction of flag at checkpoints. Even energy distribution for release. Wrist flick at release.	Clear proper direction of flag at checkpoints. Wrist flick at release. Proper catch hand placement.
Body Position Hand location and the interaction between body and flag	Shows basic understanding of how to interact with toss. Arms are not straight upon release. Had to “chase” after the flag for catch/near drop. E.g. T-rex or Cancer sign arms	Moderately accurate stance. Might be close to the body or with very high shoulders. Straight releasing arm (not directly up).	Strong stance with proper hand prep, using one or both depending upon the toss. Proper release pose (free hands) for the toss.	Strong stance, hands in the correct location on the pole. Clear prep and body stance. Catch in the correct location in relation to the body.
Rhythm/Tempo Staying on count and with the beat	Shows a very basic understanding of tempo and beat, but falls behind and/or speeds up Transitions unclear, flag released before correct count	More accurate in beat and tempo most of the time. Transitions unclear, but flag still released within one count of accurate release time.	Accurate in beat and tempo throughout the toss. Transition at correct counts, out on specified time, catch unspecified	Shows a complete understanding of tempo and beat. Clear transition at correct counts, release and catch on specified time.



Appendix C

Marching Band Staff Contact Information

Mr. Nicholas Pignataro, Band Director

npignataro@wssd.org

npignataro@wssdgmail.org

(610) 892-3470 ext. 2135

Mrs. Hayley Lombard, Assistant Band Director

hdaub@wssd.org

hdaub@wssdgmail.org

(610) 892-3470 ext. 8106

Mr. Gusten Rudolph, Drumline Instructor

grudolph@wssdgmail.org

Mr Richard Michael, Pit Instructor

rmichael@wssdgmail.org

Ms. Valerie Szeliga, Band Front Director and Danceline Instructor

vperella@wssd.org

vperella@wssdgmail.org

(610) 892-3470 ext. 2209

Ms. Regina Iannello, Dance Team Instructor

riannello@wssd.org

riannello@wssdgmail.org

(610) 892-3470 ext. 2207

Ms. Rosemary Iannello, Dance Team Instructor

riannello1@wssd.org

riannello1@wssgmail.org

(610) 892-3470

Coach Arya Boris, Silks Instructor

aboris@wssdgmail.org



Appendix D

Student Leadership

Continue to bottom for [job descriptions](#) and [flow chart](#)

Drum Major

These students manage the entire leadership team. They are responsible for the Band. It's their ship.

Student Director

Student Directors are Drum Majors of the field. They are the most effective and important leaders because they conduct, run rehearsals, plan rehearsals, organize events, attend Drum Major Academy, wear silver arm cords on their uniforms, and more. They should train another person in their team/section to lead when they are away conducting/planning/rehearsing.

Assistant to the Director

Photojournalist-in-Chief

Past leaders set the standard. I task the P.I.C. with capturing our season in images. I expect them to deputize (recruit) other Band members to help photograph events.

Head Field Major

Assistant Head Field Major

Field Major

Led by the Head Field Major, the Field Majors set up our fields, stages, gyms, and rehearsal spaces with sound equipment, ladders, bags, field numbers, technology, and anything else you may need. Field Majors usually go on to very high leadership positions in the future because Field Major is a hard job. Sometimes, they go without thanks. If they do well as a field major it makes me think they could do well leading the whole band.

Section Leaders, Captains, Co-Captains, are primarily responsible to help students review music in addition to assisting squad leaders in reviewing drill. In large sections, the Section Leader is in charge of both/all squads. Squad Leaders are responsible for keeping squads informed, reviewing drill, and vocalizing squad's joys and needs.

[Back to table of contents](#)



Flute

Cristina Si, Section Leader

Anwen Liu, Squad Leader

Tianyue Wang, Squad Leader

Clarinet

Caeli Rieger, Section Leader

Wendy Chen, Squad Leader

Sophie Lin, Squad Leader

Alto Saxophone

Tenor Saxophone

Trumpet

Mellophone

Trombone

Baritone

Tuba

Bells

Pit

Drumline

Dance Team

[Back to table of contents](#)



Silks

Danceline

Student Leadership Job Descriptions

Attend rehearsals and performance as much as possible to set a very high standard for others. All leaders assist reviewing drill, routines, and music.

Drum Major (typically a Senior)-Executive Council Member

- Conduct during rehearsals and performances
- Attend Summer Leadership training
- Study musical scores
- Lead full-band rehearsals
- Lead sectional rehearsals
- Oversee entire leadership team operation
- Help select repertoire
- Help create squad lists
- Keep spirits high, notify Director of ways they can improve morale
- Be firm, at times, to keep Band focused
- Lead drill instruction
- Meet with Director often (including before and after school)
- Assign leadership roles as needed-example: band sibling assignments, spirit activities
- Take on service roles that need to be done, whenever they need to be done
- Attend ALL Marching Band Events--this role requires you to attend every single rehearsal and event except for absences due to illness and other extreme circumstances

Student Director (typically a Senior)-Executive Council Member

- Conduct Band during rehearsals, second quarter, Band Night, and Warm-ups
- Attend leadership training at West Chester University
- Study musical scores
- Fulfill the responsibilities of Drum Major if a Drum Major is absent
- Lead sectional rehearsals
- Help create squad lists
- Keep spirits high, notify Drum Majors and Director of ways to improve morale
- Communicate concerns and joys of Band to Drum Majors and Director
- Be firm, at times, to keep Band focused
- Lead drill instruction and off the field
- Assist Drum Majors in overall leadership team operations
- Take on service roles that need to be done
- Keep Band events a priority: while you are encouraged to participate in other activities, you should attend as many events as possible



Assistant to the Director (typically a Junior or Senior)

- Serve as staff to the Director, coordinate with Executive Council
- Assist in secretarial, communication, equipment, inventory roles
- Serve at discretion of Director and complete tasks that are left unfilled
- Social Media Specialist (one person): take pictures/video, create online content for website and Social Media, provide press release paragraphs
- Squad Cup Director: implement and maintain inter-squad friendly competition and challenges to boost morale

Photojournalist-in-Chief (typically a Senior)

- Shoot and edit photographs of band rehearsals, performances, and other events
- Recruit and coordinate other band students to shoot and edit photographs
- Document the band's unique season
- Tell the story of Band through great photographs
- Update and rotate photos posted on the Band room collage boards

High School Outreach Coordinator (typically a Sophomore, Junior, or Senior)

- Communicate often with Assistants to the Director
- Create and organize events connecting current Marching Band students with High School students not yet enrolled in the band
- Implement and oversee Freshman/new member orientations
- Connect with local university marching and pep bands to assist Strath Haven students interested in playing music in College

Head Field Major (typically a Senior)

- Direct all Field Majors, work with Drum Majors to assign roles
- Set an example by attending as many Marching Band events as possible
- Have no assigned item to carry so that you can carry something if a Field Major is absent. If you prefer, you may assign yourself the main ladder but must have a floater Field Major in place to carry things that are not accounted for
- Communicate with Director and Drum Majors to discern what equipment is needed for specific rehearsals and performances
- Communicate with Director and Drum Majors to discern where equipment should be placed on the field and in the stands
- Coordinate equipment care: report maintenance/repair issues to Drum Majors, clean equipment/wipe wet equipment down
- Try to handle all Field Major issues yourself before you approach a Drum Major or the Director

Field Major (typically a Sophomore, Junior, or Senior)

- Prepare field and stands for rehearsals and performance
- Carry assigned equipment to field, bus, or other location
- Communicate with Head Field Major about issues, maintenance, and repairs
- Perform duties assigned by Head Field Major

Section Leader/Captain/Co-Captain (typically a Junior or Senior)

- Oversee at least two squads if student membership numbers allow
- Review squad drill, music, and other important information

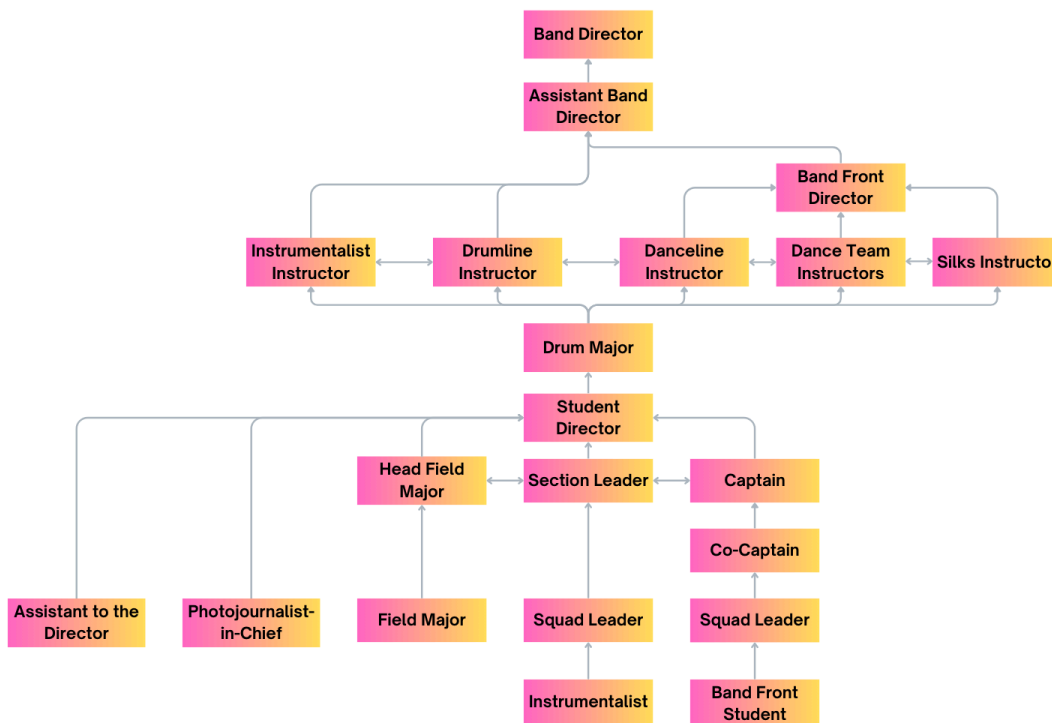


- Review routines with leaders
- Review squad marching basics
- Lead sectional rehearsals
- Keep section organized
- Relay important information to section, communicate regularly with instrumentalist Student Director
- Vocalize your section's joys and concerns to Executive Council
- Assist instrumentalist Student Directors in overall operation of instrumentalist student leadership
- Welcome new members to the Band
- Maintain positive spirit and energy
- At times, be firm to keep squad focused

Squad Leader (typically a Sophomore, Junior, or Senior)

- Review drill, routines, and other important information
- Vocalize squad's joys and concerns to Section Leader
- Communicating important information to squad
- Welcome new members to the Band
- Maintain positive spirit and energy
- At times, be firm to keep team focused

Student Leadership Chain-of-Command





Appendix E

General Expectations Behavior Chart

Band staff enforces General Expectations using a soccer-style yellow card/red card system. Adult staff first provide verbal or written warnings to students failing to meet expectations. Adult staff issues a yellow card for a second offense. Adult staff issues a red card for third offense or for any behavior requiring report to School Administration.

	Behavior	Outcome
Verbal/Written Warning	Student does not meet general handbook expectations	One-to-one adult staff to student conference
Yellow Card	Student does not meet general handbook expectations -second occurrence	One-to-one adult staff to student conference. Parent/Guardian notified.
Red Card	Student does not meet general handbook expectations -third occurrence (two yellow cards) and/or behaviors involving: weapons, threats, bullying, harassment, smoking/vaping or in possession of, vandalism or damage to school property, alcohol or drug use or in possession of, inappropriate use of electronic device (violating WSSD acceptable use policy), and other behaviors at Director's discretion.	One-to-one adult staff to student conference. Parent/Guardian notified. School Administration notified. Student suspended from performance/rehearsal in session plus following performance. Parent/Guardian removes student from location or notified that student is driving home early. Student completes alternative assignment for suspended game. Student participation/attendance grade lowered 6 points.

- Yellow and Red Cards are in name only--the Director keeps this record.
- Every warning and card is documented within Adult Staff.
- Parent/Guardian volunteers can not issue warnings nor cards.
- Volunteers can report student behavior to an Adult Staff member who may then issue warning or card.
- The Band Director can issue or remove warnings and cards at their discretion. The Band Director approves all warnings and cards.



- The Band Director notifies parents/guardians and School Administrators of behavior infraction issues.
- Red card=student removed from rehearsal/performance and suspended for following performance. Students must complete make-up assignment due by 11:59pm of performance day.
- Red card=active participation/performance grade reduced 6 points. 3 points may be re-earned after completing make up assignment.



Appendix F

The SHHS Band Boosters

The [SHHS Band Boosters](#) provides advocacy, operational support, and financial support for the Panther Marching Band. In particular, the SHHSBB provides financial aid grants & scholarship funds for activities that build an inclusive music community, as well as some equipment to augment larger School District purchases.

All parents/guardians can be members of the Boosters. The Boosters encourages all to participate with any level of support they can.

Financial Aid

Through support of the WSMA and SHHSBB, **Marching Band Fees shall not be a barrier to participation in the band.** If for any reason you need financial relief to participate in Marching Band, please fill out this form: [MARCHING BAND FINANCIAL AID REQUEST](#)

Activity Funds

SHHSBB raises funds for Band Camp fun, ice cream social, pizza lunches, Senior Night (decorations, flowers for Senior, and photo props), the annual Band Picnic (pizza, cake, and donated beverages), and coordinates the Band Trip (processing payments, providing financial aid, and supporting chaperones).

Fundraising

SHHSBB will support these fundraisers in the upcoming season: Outdoor Showcase Concert, spirit wear sales for students and adults, and/or direct donation drives.



Volunteer

Parents/guardians and community members are called to volunteer for any amount of time with the Boosters.

Learn more about the “Roadies” here: [What is a “Roadie” and how can I be one?](#)

Photo credit: Kai Lincke '22

Adult Volunteer Help: uniform fittings

[Please consider helping our volunteer team fit students for uniforms this summer. Sign up here.](#) It takes many, many helpers. The Band promises that volunteers can offer only as much time as their means allow. You will not be forced into extra volunteering!

Volunteer Interest Form

[Please complete this form to learn more about helping the SHHSBB.](#)

[Back to table of contents](#)