

**Paper Title Submitted to ICRCCEES'25 (Please Note That Each Word of the  
Title Should be Capitalized)**

First Name Surname<sup>1,\*</sup>, Author 2<sup>2</sup> and Author 3<sup>3</sup>

<sup>1</sup> *Department of Civil Engineering, Djelfa University, Djelfa, Algeria*

<sup>2</sup> *Affiliation for Author 2*

<sup>3</sup> *Affiliation for Author 3*

\* (Corresponding Author's name and email: First Name Surname, [abcd@icrccees25.com](mailto:abcd@icrccees25.com))

**Abstract**

This is the required format for the Abstract to be submitted to the First International Conference on Recent Challenges in Civil Engineering and Environmental Sustainability "ICRCCEES'25", which will be held on 10 - 11 December, 2025 in Djelfa, Algeria. The language of the conference is English. The full paper and abstract must be written in English. Please use this template to prepare your abstract. The presenting author's name should be underlined (please see the author names in this file as an example). The Abstract should be 200 - 350 words in length, providing a concise synthesis of the entire paper, including the purpose of the study, method, main findings and interpretation of their significance. The abstract should not contain any equations and references. Page margins should be 2.2 cm for top and bottom margins, and 2 cm for left and right margins. Except the paper title, all text in the abstract should be used font type Times New Roman with 12 pt font size and single line spacing. The paper title should be used font type Times New Roman with 14 pt in bold, font size and exact 24 pt line spacing (12 pt and 24 pt before and after paragraph, respectively). The Abstract should be submitted through the ICRCCEES'25 conference online system.

**Keywords:** *Optimization; Civil Engineering; Materials; Structures; ICRCCEES'25. (Maximum 5 keywords)*

## 1. INTRODUCTION

The length of conference papers is about 6 to 8 pages. The maximum length of the conference papers is 8 pages including references, figures and tables. The number of pages is counted using papers with ISO A4 size with 2.2 cm top and bottom margins and 2.0 cm left and right margins.

To submit a conference paper to [ICRCCEES'25](https://univ-djelfa.dz/icrccees25), authors should try their best to typeset their paper following the style given in this template. All papers must be submitted electronically in Microsoft Word format through the conference website (<https://univ-djelfa.dz/icrccees25>).

## 2. SECTION (MAJOR HEADING)

Authors can use the Heading 1 style in template for major headings. Major headings should be placed flush with the left margin, typed in BOLD CAPITALS and identified in Arabic numerals. Leave 12 pt and 6 pt above and below major headings, respectively.

### 2.1. Sub-section (Sub-heading)

Authors can use the Heading 2 style for the sub-headings. Sub-headings should be typed in bold upper and lower cases flush with the left margin with a second level of Arabic numerals. Leave 12 pt and 6 pt above and below the sub-headings, respectively.

#### 2.1.1. Sub-sub-section (Sub-sub-heading)

Authors can use the Heading 3 style for the sub-sub-heading. Like the sub-headings, the sub-sub-headings should be typed in bold upper and lower case flush with the left margin, but should be identified with a third level of Arabic numerals. Leave 12 pt and 6 pt above and below sub-sub-headings, respectively. Try to avoid using sub-sub-sub or higher subsections.

## 3. EQUATIONS

Including symbols and equations in the text, the variable name and style must be consistent with those in the equations. Equation (1) below is an example. Equations should be indented at the left margin and numbered at the right margin. Leave 6 pt above and below an equation.

$$f(x) = a_0 + \sum_{n=1}^{\infty} \left( a_n \cos \cos \frac{n\pi x}{L} \right) \quad (1)$$

Equation (1) is an example to show the required style of equations. Define all symbols the first time they are used. The equation style in this template can be used.

## 4. TABLES

Table 1 shows a typical example of a table. Authors should use 10 pt Times New Roman fonts in tables. A caption must be given above the corresponding table. Tables should be centered and put at appropriate places in the paper. The table style can be adopted.

**Table 1. An example of table style**

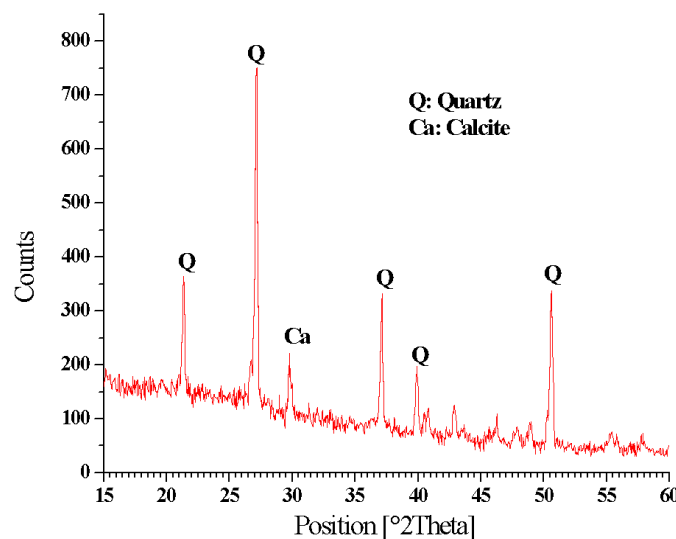
Mixtur e	t <sub>r</sub> (mm)	d <sub>c</sub> (mm)	h (mm)	t <sub>w</sub> (mm)	L (mm)
M1	100	30	150	10	2,50

M2	100	30	150	15	3,75
M1	200	20	350	20	4,50
M2	200	20	350	25	5,25

The caption of a table must be centered and typed in bold. The caption style in the template can be used.

## 5. FIGURES

Please refer to Figure 1 for a typical example of a figure. A caption must be given below the corresponding figure. Figures should be centered and put at appropriate places in the paper. Leave 6 pt above and below the figure. The figure style can be used.



**Figure 1. An example of figure style**

The figure caption must be centered and typed in bold. The caption style in this template can be used.

## 6. CONCLUSIONS

Do not simply repeat the results or discussions, but provide some overall comments on the findings and their applicability in other settings or applications. The discussion of implications should tell the reader what the importance of the work is for others.

## 7. REFERENCES

To cite sources in the text, use the author-date method; list the last names of the authors, then the year. The formats are as follows: one author - (Surname1, 2024); two authors - (Surname1 and Surname2, 2023); three or more authors - (Surname1 *et al.*, 2021). Prepare a reference section listing all references alphabetically by last name of the first author. The references should be typed with font size 12 pt. below are samples of properly formatted and complete references:

### Journals:

Rout, M.K.D., Shubham, K., Biswas, S., and Sinha, A.K. (2024). An integrated evaluation of waste materials containing recycled asphalt fine aggregates using central composite design. *Asian Journal of Civil Engineering*, 25(1), 1007-1025. <https://doi.org/10.1007/s42107-023-00828-6>

### Conference Proceedings and Symposia:

Surname1, T., Surname2, T.C., and Surname3, Y.E. *Effect of sand type on fresh and hardened properties of self-compacting concrete*. 2<sup>nd</sup> International Sustainable Buildings Symposium, Ankara, Turkiye. 28-30 May 2015, pp. 37-41.

**Books and Reports:**

Surname1, T., and Surname2, T.C. (2021). *Structural Engineering*. 2<sup>nd</sup> Ed., Elsevier, New York, p. 450.