

# Rocky Mountain Collegiate Opener

## FC1 Caddie Book - 2025

This caddie book has the hole maps and info pages that will be put at each teepad. ***Make sure your device is not in dark mode to view this document.***

### Course Notes:

- Each teepad is 6 ft wide, and although the length may not be marked, each pad extends to 12 feet behind the flags/tape. There are concrete, dirt, grass, and asphalt teepads.
- Please do not step on any flowers! Thank you in advance.
- The baskets will not be put up until early Saturday morning. All flags marking OB lines, basket positions, etc., will be up on Friday afternoon.
- There is a long, very uphill walk between holes 5 and 6.

**CTPs and other prizes** will be announced at the player's meeting!

All hole information is up to date on UDisc:

<https://udisc.com/courses/usu-temporary-courses-ES23>

**The course for both rounds is par 65, 6239 feet.**

**Parking:** here is a location pin for the parking lot:

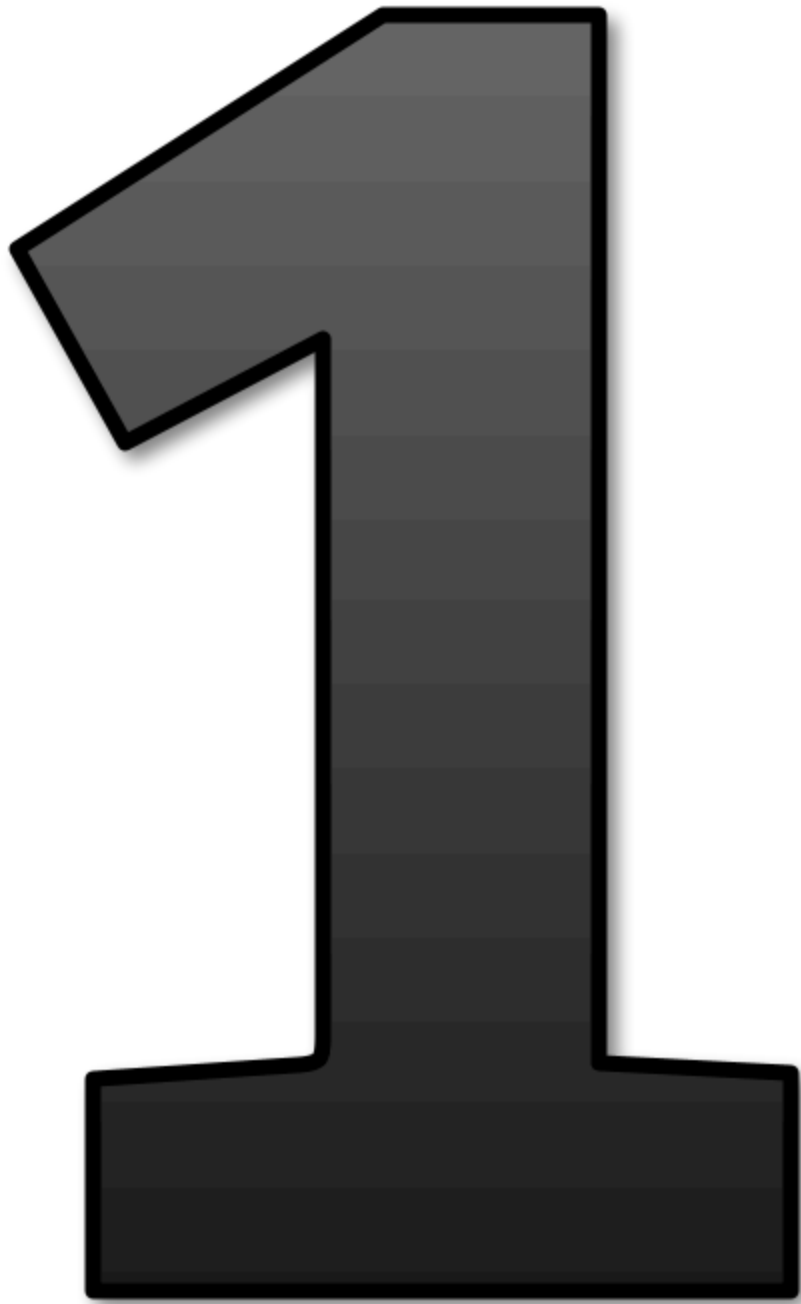
<https://maps.app.goo.gl/2Q1PJ1LrA6ees3eP8>

# FC1 COURSE MAP



## Key for the info pages and hole maps:

- ❖ A black number means it plays differently from MC1
- ❖ A blue number means it plays the same as MC1
- ❖ Red lines indicate Out of Bounds
- ❖ Blue lines indicate Mandatory Relief



# **Par 4 - 293 ft**

Mando left of the marked tree trunk. Missed mando proceeds to Drop Zone. Flags and beyond OB. Parking lot OB.



Drop Zone



Mando



Next Hole





# **Par 3 - 244 ft**

Parking lot OB. Road and beyond OB deep (no Mando).



Next Hole →





# **Par 5 - 590 ft**

Flags and beyond OB right and left. Sidewalk and beyond OB behind the basket.



Next Hole

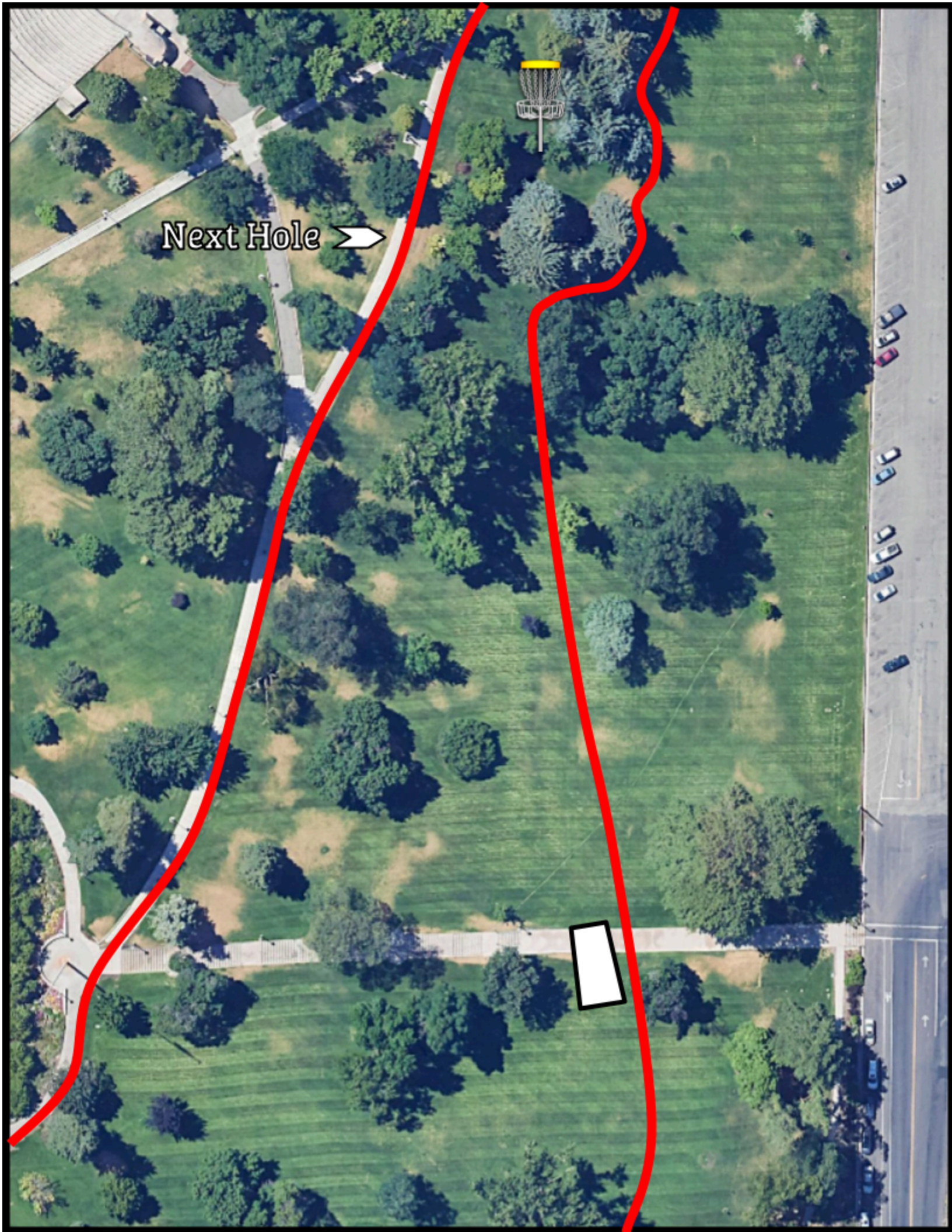




**Par 4 - 524 ft**

Flags and beyond OB right. Sidewalk and beyond OB left.

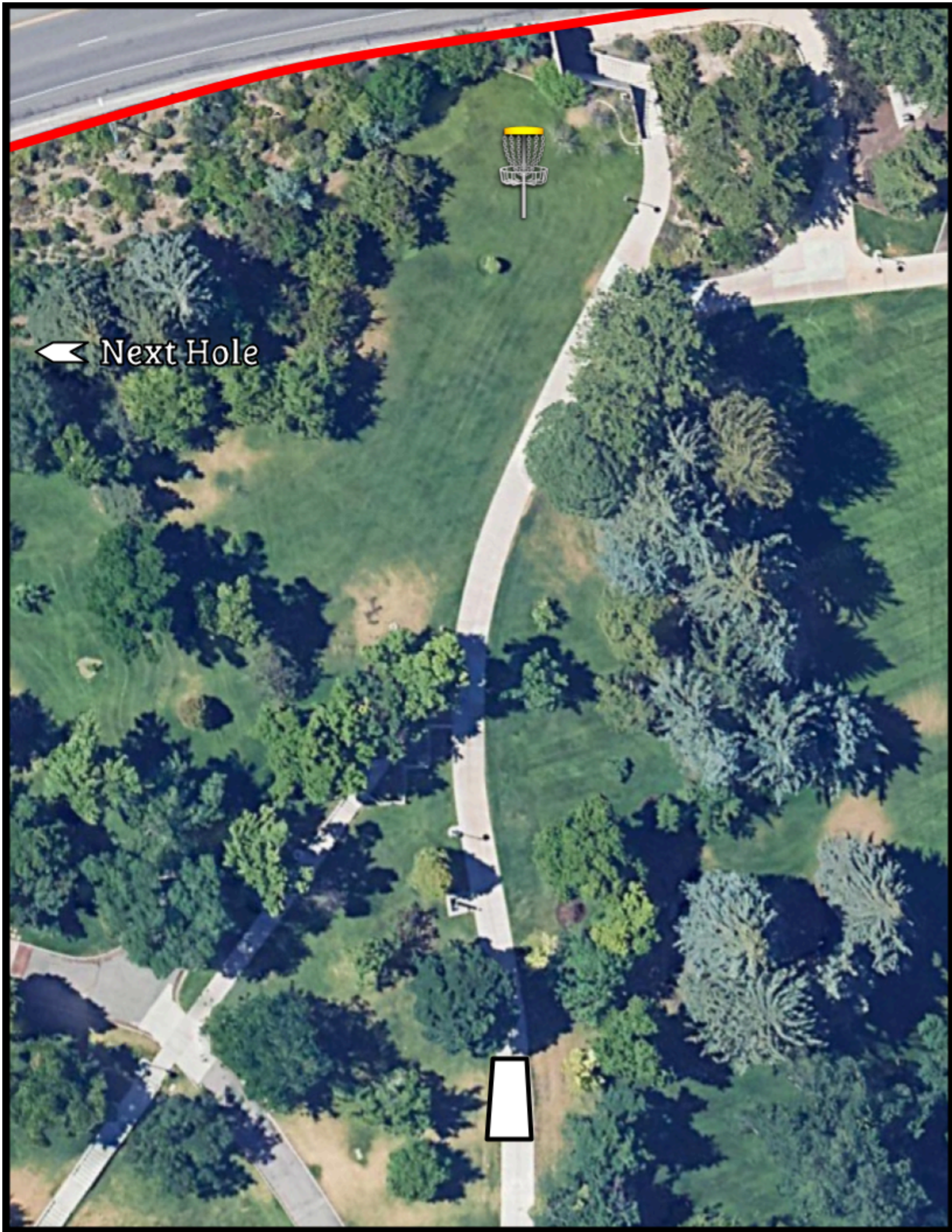
Next Hole →





**Par 3 - 286 ft**

The road is OB deep (fence, concrete wall and beyond).



Next Hole





# **Par 4 - 290 ft**

Landscaping curb and beyond OB right. Parking lot OB  
(starting from the curb).



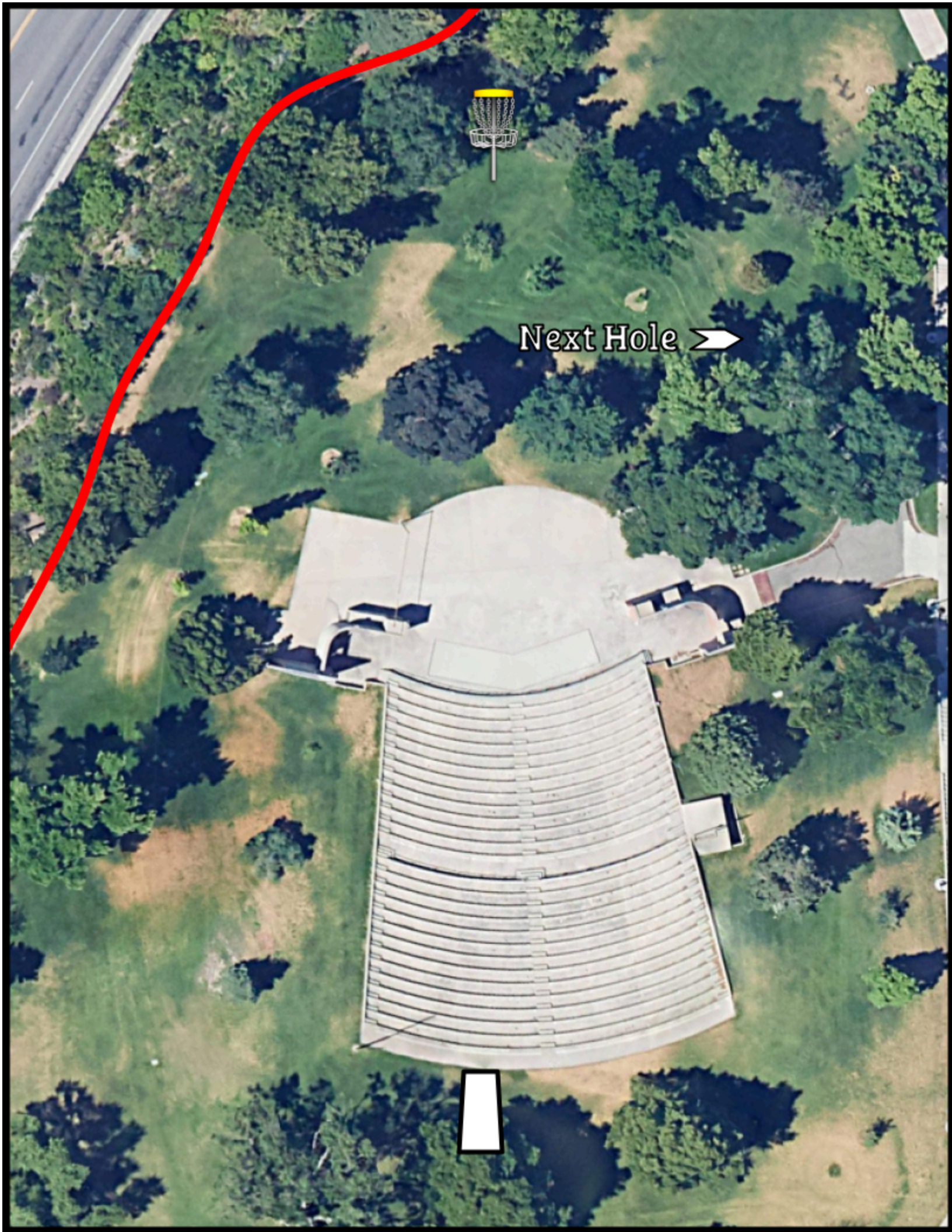
Next Hole





**Par 3 - 273 ft**

Landscaping curb and beyond OB left.



Next Hole →





**Par 3 - 218 ft**

No OB on this hole.



Next Hole →





**Par 3 - 225 ft**

Road (curb to curb) is OB.



Next Hole →



# 10

## Par 5 - 582 ft

The flags, road and beyond is OB. The triangle of grass and bushes under the basket is in-bounds (refer to caddie book map).  
An OB throw proceeds to the last point in-bounds.

Next Hole



115 ft  
to basket

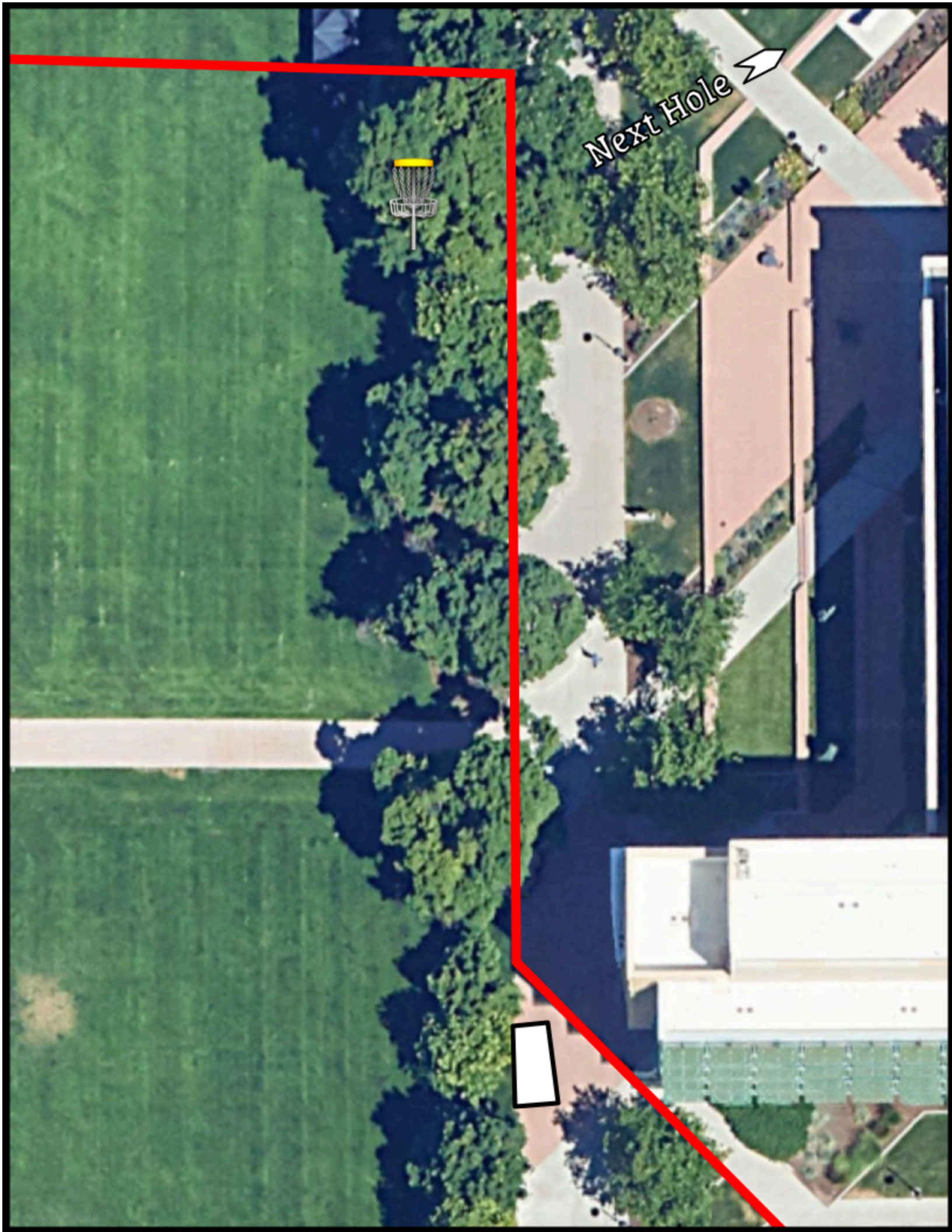




**Par 3 - 172 ft**

Sidewalk and beyond OB right. Flags and beyond OB deep.

Next Hole

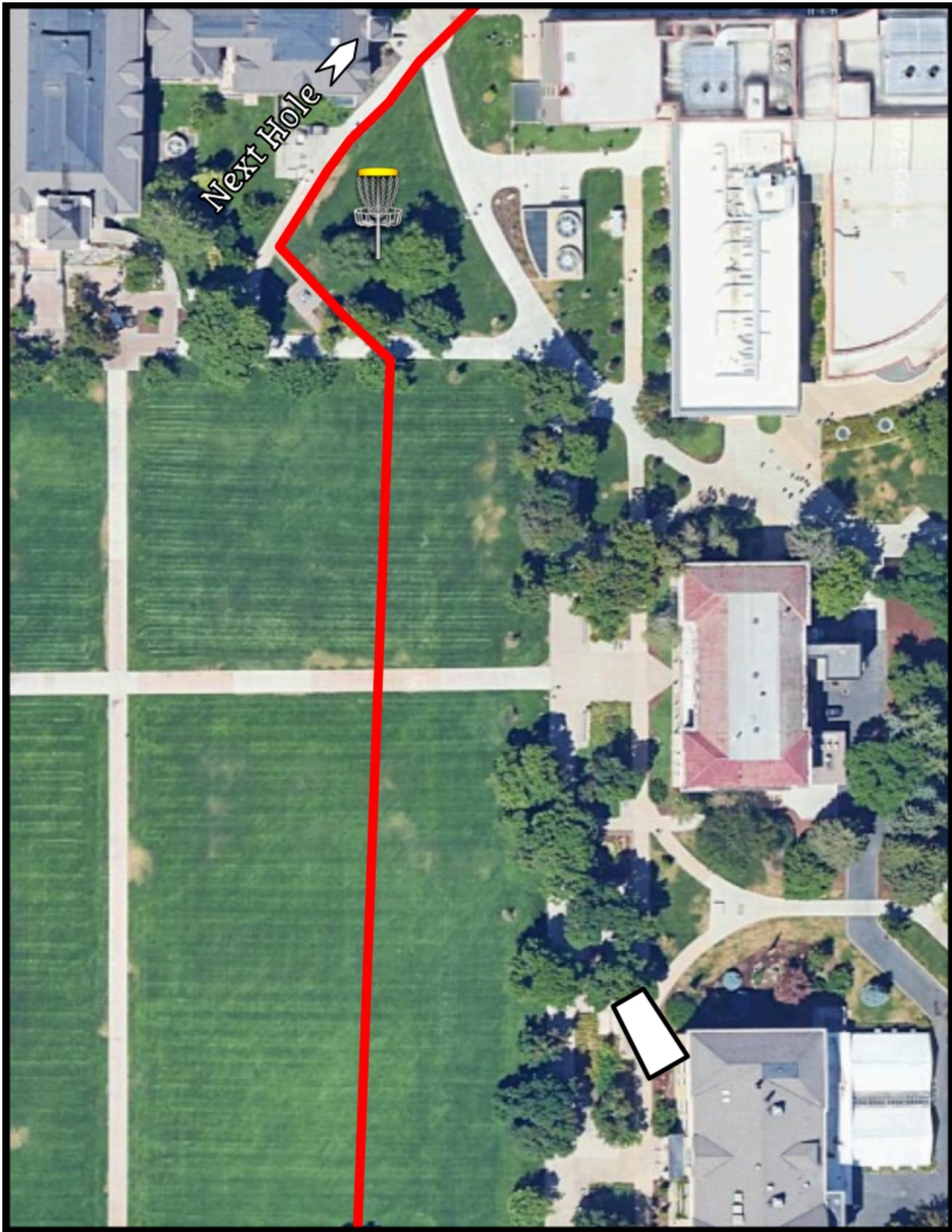


12

**Par 4 - 458 ft**

Flags and beyond OB left.

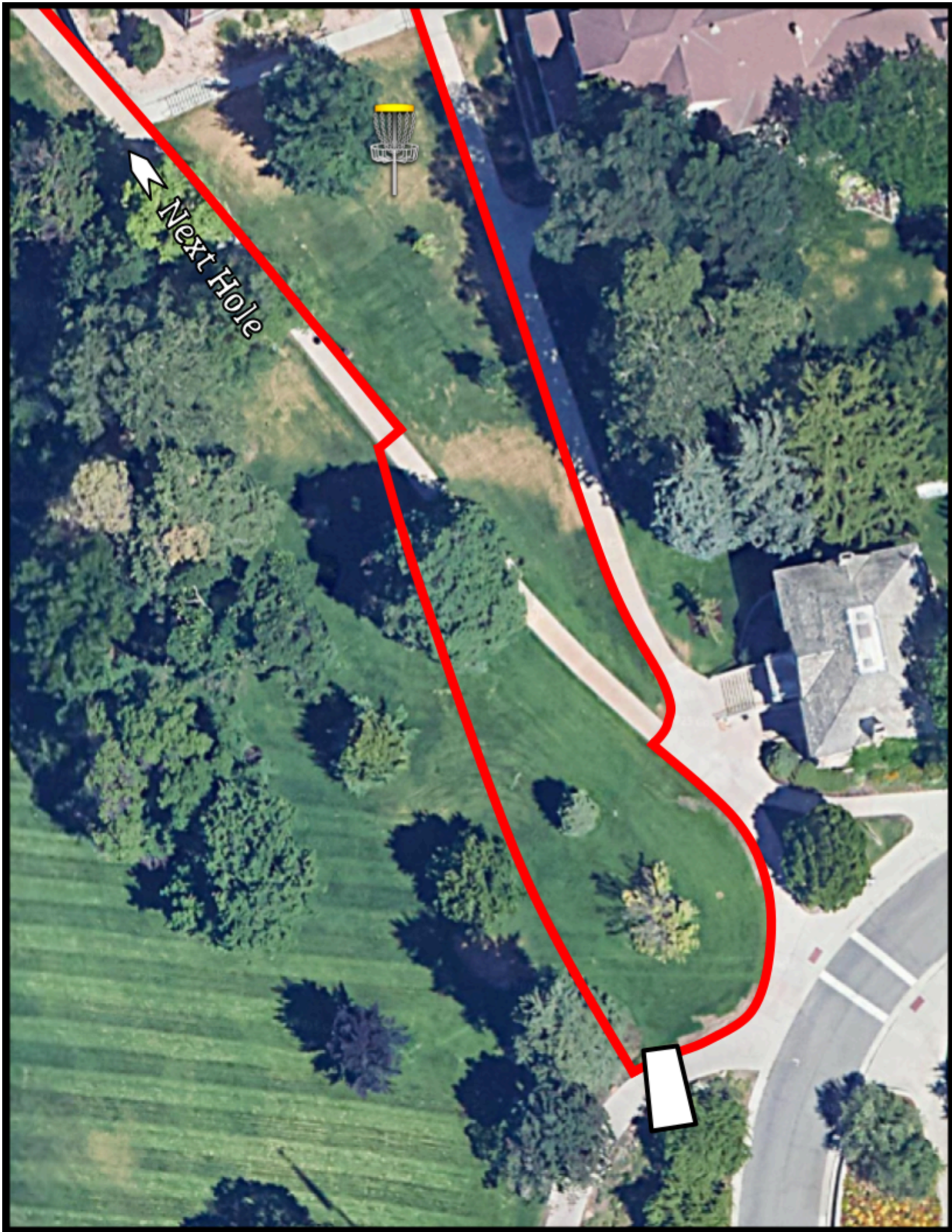
Next Hole



13

**Par 3 - 233 ft**

Sidewalk and beyond OB right. Flags and beyond OB left.



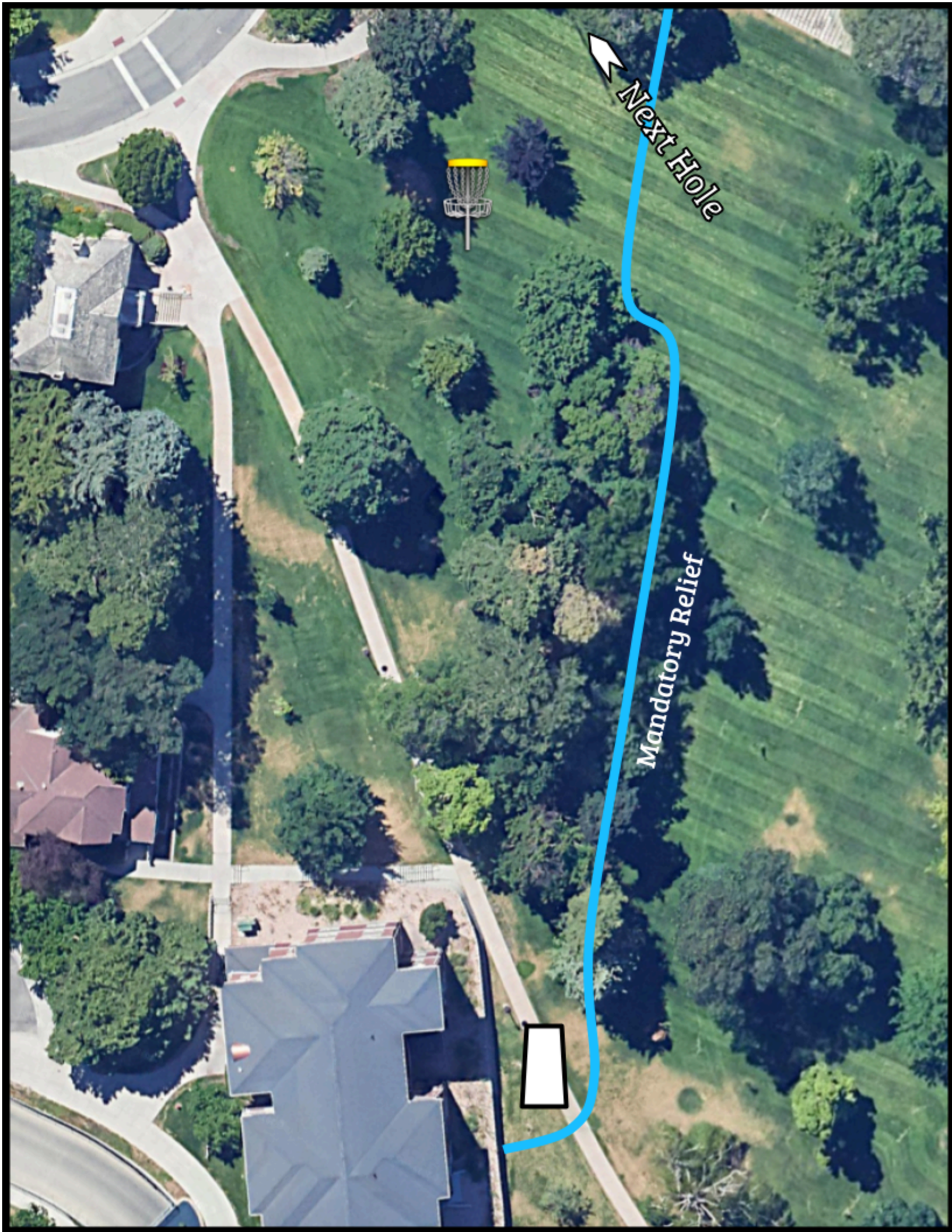
Next Hole





**Par 4 - 278 ft**

Flags on the right are Mandatory Relief (played like OB but no penalty stroke). No OB on this hole.



Next Hole

Mandatory Relief



15

**Par 3 - 304 ft**

Road (curb to curb) is OB. Sidewalk and beyond OB deep.



Next Hole



# 16

**Par 3 - 276 ft**

Mando left of the marked tree. Missed mando is a re-throw from the teepad. Sidewalk and beyond OB deep.



Next Hole

Mando

# 17

## Par 4 - 488 ft

Flags and beyond OB left. Flags on the right are Mandatory Relief (played like OB but no penalty stroke).

Next Hole 



Mandatory Relief



# 18

**Par 4 - 450 ft**

Flags and beyond OB left. Flags, sidewalk, and beyond OB right and deep (refer to caddie book map).

Next Hole

