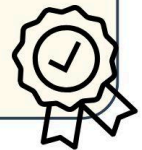


GenAI for Educators

GENWISE

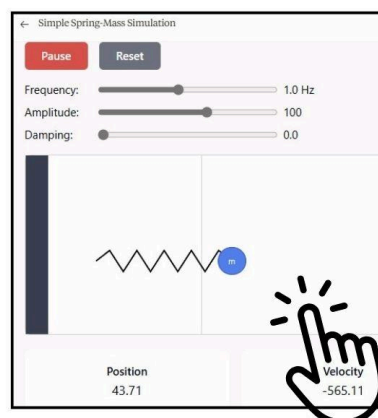
GenAI can boost your productivity by 40%!
But only if you know how to use it!

- Your students use AI daily—are you keeping up?
- Do you know which tools to use and how to manage multiple ones?
- Can you spot AI's pitfalls and guide students to use it safely?
- GenAI is sometimes Dumb! And sometimes a Genius. You need to understand its quirks to get the most out of it.



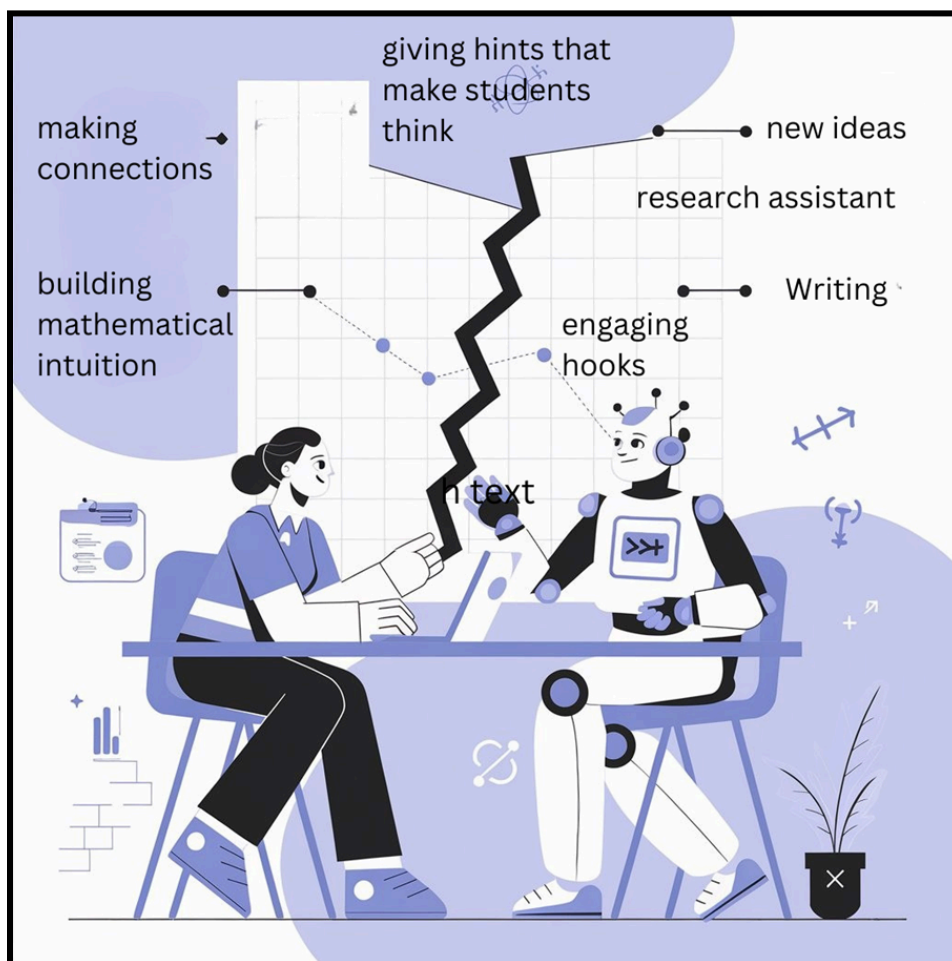
*"This course was **an eye-opener!** I never realized how much time AI could save me—lesson planning, quizzes, even student feedback—**now takes minutes, not hours.**"*

- Course Participant Feedback



← Claude Artifact created by past course participant to teach Simple Harmonic Motion to their students
<http://bit.ly/SHMmotion>

Gen AI for Educators



An Online Teacher Mentoring Offering

Table of Contents

Why Educators Need to Learn Gen AI?	2
Enhancing Teaching Excellence	2
Bridging the Technology Gap	2
Ensuring Professional Relevance	2
Avoiding Common Pitfalls	2
Course Goals	2
Take Steps to Use AI for Enhanced Teaching	3
Understand AI's Educational Impact	3
Navigate AI's Limitations Safely	3
Guide Student AI Usage	4
Build Sustainable AI Practice	4
Feedback from Past Participants (Educators)	4
Course Structure and Proposed Schedule	6
Course Content	6
Session 1: Basics of GenAI (2 hours online)	6
Session 2: Uses of Gen AI in Improving Education (2 hours online)	7
Session 3: The Danger Zone: What to be Careful Of (2 hours online)	7
Session 4: General FAQs about GenAI (2 hours online)	7
Session 5: Hands-on Work and Doubt Clearing (2 hours online)	8
Fee	8

Gen AI for Educators

This document describes the goals and content of the 5-session online course on GenAI for educators offered by GenWise.

Why Educators Need to Learn Gen AI?

It is important and urgent for educators and educational leaders to become familiar with the capabilities and usage of Gen AI tools for the following reasons-

Enhancing Teaching Excellence

Gen AI tools, when used effectively, can significantly amplify teaching capabilities. These tools can help educators create more engaging lesson plans, develop personalized learning materials, and automate routine tasks - allowing teachers to focus more on meaningful student interactions and innovative teaching approaches.

Bridging the Technology Gap

Students are already actively using Gen AI tools for learning, research, and assignments. Without proper understanding and guidance from educators, this creates a concerning knowledge gap in our classrooms. Teachers must stay ahead of this curve to effectively guide students in responsible and productive use of these technologies.

Ensuring Professional Relevance

As Gen AI becomes increasingly integrated into every sector, including education, developing Gen AI literacy is no longer optional. Educators need to understand these tools to maintain their effectiveness and relevance in a rapidly evolving educational landscape. This knowledge is crucial for preparing students for a future where AI literacy will be a fundamental skill.

Avoiding Common Pitfalls

Many educators are currently using Gen AI tools ineffectively or counterproductively. For example, the widespread use of AI detectors, which have been shown to be unreliable, can lead to false accusations and eroded trust. This course helps educators develop informed approaches to managing Gen AI in their classrooms.

Course Goals

[Recent research](#) at a leading global consulting firm demonstrated that professionals using AI completed 12.2% more tasks, worked 25.1% faster, and produced 40% higher quality results compared to those working without AI. However, these gains were achieved through structured

experimentation - allowing individuals to discover effective ways to integrate AI into their workflow while being guided by organizational best practices.

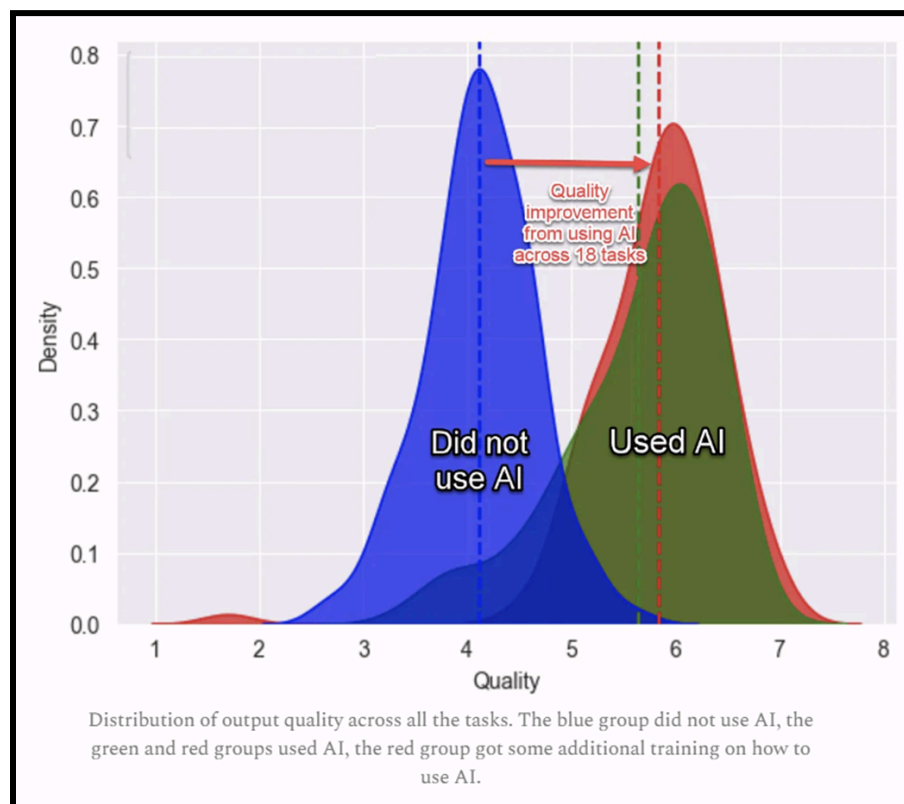


Fig: Quality Improvement from Using AI; [Source](#)

This course aims to help educators achieve similar transformative results in their teaching practice through a balanced approach of individual exploration and structured guidance. Through hands-on experience and collaborative learning, participants will:

Take Steps to Use AI for Enhanced Teaching

Learn to start incorporating Gen AI tools into daily teaching tasks, from lesson planning to assessment, while developing personal workflows that maximize productivity and creativity.

Understand AI's Educational Impact

Gain insight into how Gen AI can enhance both teaching and non-teaching tasks, developing the ability to identify where AI can add the most value in their specific context.

Navigate AI's Limitations Safely

Recognize Gen AI's constraints and potential risks, including understanding the ['jagged frontier' of AI capabilities](#), identifying bias, and managing hallucinations to ensure responsible usage.

Guide Student AI Usage

Develop strategies to help students leverage AI effectively for learning while avoiding pitfalls, creating guidelines that promote responsible AI use in academic work.

Build Sustainable AI Practice

Work towards establishing individual best practices that can be shared and refined within the school community, contributing to the development of institutional AI guidelines based on real classroom experience.

Intended Audience

- Teachers
- School Leaders
- Coordinators
- School Administrative/ HR Staff

“Ask executives to use AI so they understand what it’s good and bad at, learn how to write effective prompts, and can model responsible behavior from the top down. “Just have people use these systems themselves. This is the ultimate user innovation.” - *Prof. Ethan Mollick, Wharton*

About the Lead Instructor

[Navin Kabra](#) has designed the course and will be the lead instructor. He holds a PhD in Computer Science from the University of Wisconsin-Madison and a B.Tech from IIT-Bombay. He's the CTO at ReliScore and a Professor of Practice at IIT-Bombay. Recently, he's consulted on Gen AI for software and engineering firms, taught intensive Gen AI courses for high-school students at GenWise summer camps, and delivered invited talks and workshops on Gen AI to teachers, doctors, industrialists, investors, and researchers.

Feedback from Past Participants (Educators)

We share below feedback from a few educators who have participated in a previous edition of this course-

- The course provided valuable insights into how AI can be used effectively in education. The explanations were clear, and the examples were practical.
- There was more than one ‘aha’ moment in the course. I was thrilled when I could create a song on suno.com. I could compare the different textbooks in notebook LM and draw findings and reasons for a better one to be used in a classroom. I can create resources, analyze data, research on a topic and also create PPTs so easily and quickly with the

use of LLMs. The workshop was very useful as the tools introduced can actually be practiced on a regular basis and time can be utilised in a more meaningful and efficient manner.

- Doing home assignments after the online sessions with the shared links and a sample model gave me clear ideas about a lot of prompts, processes and tools.
- Teachers definitely need exposure to these tools, as many in the teaching community still do not use them. They may hesitate to modify content or teaching methods, perceiving it as time-consuming. However, these sessions can help enhance efficiency and streamline lesson preparation.
- This course is an early step and helps you to know about AI, its usage and challenges too. It will also provide a platform to educators to share their thoughts about student use of AI.
- 92% of teachers of a school group said that their usage of GenAI will go up more than 5 times after this course. They said they would use GenAI for the following tasks-
 - I will create more artifacts for teaching my students (artifacts are simulations that Claude AI creates)
 - I plan to use GenAI for a variety of tasks, both in teaching and beyond. For teaching, I'll use it to generate lesson plans, create engaging quizzes, and provide personalized feedback to students.
 - Planning, writing reports, Generating graphics, presentations, deeper discussions and analysis of books (Notebook LLM)
 - Generating different content for my lessons - artifacts, lesson hooks and plans, assessments/ quizzes, songs, jokes and memes, establishing and implementing cross-curricular relationships, report card comments (student profiles), and so much more.
 - For resource creation, lesson planning, data analysis, student engagement, upskilling my knowledge through learning and research.

Course Structure and Schedule

This is a 10-hour course, conducted across 5 online sessions. Assignments will be given after each session for participants to use Gen AI tools and get a good hands-on feel for interacting with Gen AI. Additionally, reading materials will be provided to participants, to support deeper understanding and continued learning.

Participants will be required to work hands-on on GenAI tools throughout the course-

- For 30 minutes in each of the first 4 online sessions
- For 1.5 hours in the last and 5th session
- When working on assignments in-between sessions

Use cases for teachers will be covered in every session from session 2 onwards. These will include teaching use cases as well as other non-teaching tasks like analyzing assessment data.

Session No.	No. of Hours	Session Title
1	2	Basics of GenAI
2	2	Uses of Gen AI in Improving Education
3	2	The Danger Zone: What to be Careful Of
4	2	General FAQs about Gen AI
5	2	Hands-on work and doubt clearing

Course Content

Session 1: Basics of GenAI (2 hours online)

- Advanced capabilities of Gen AI tools: Working with documents, PDFs, spreadsheets, images (including handwritten notes), programming tasks, data analytics, charts, and multilingual content
- Regional language capabilities and translation features: Making Gen AI accessible across language barriers
- Audio capabilities and speech-to-text applications for enhanced accessibility
- Advanced prompting techniques to maximize AI tool effectiveness
- Comparative analysis of Gen AI tools:

- *Claude and its unique Artifacts feature*
- *NotebookLM for research applications*
- *Gemini's video and deep research capabilities*
- *Perplexity for enhanced search functionality*
- *Understanding the value proposition of paid vs free accounts*

Session 2: Uses of Gen AI in Improving Education (2 hours online)

- Creating and enhancing lesson plans and worksheets with AI assistance
- Developing interactive simulations and educational games using Claude Artifacts
- Designing personalized practice sets tailored to student needs
- Implementing AI-powered adaptive tutoring and deliberate practice strategies
- Facilitating one-on-one Socratic dialogues for deeper subject understanding
- Enhancing lesson engagement through AI-generated content: memes, videos, songs, and games

Session 3: The Danger Zone: What to be Careful Of (2 hours online)

- Understanding technical limitations: Context window constraints and their implications
- Recognizing and addressing AI bias in educational contexts
- Managing AI hallucinations: Detection strategies and correction methods
- The "Jagged Frontier": Understanding AI's uneven capabilities
- Developing balanced policies for student AI use
- Moving beyond AI detectors: Why they're problematic and better alternatives
- Safety considerations: Addressing jailbreaking, prompt injection, and other risks

Session 4: General FAQs about GenAI (2 hours online)

- AI's impact on future employment and skill requirements
- Security and privacy considerations in educational contexts

- Managing deepfakes and misinformation
- Copyright and intellectual property implications
- Open discussion of participant concerns and questions

Session 5: Hands-on Work and Doubt Clearing (2 hours online)

Participants will work individually/ in groups on different scenarios with the support of the instructors to get a better understanding of how best to use GenAI tools. Doubts of participants will be cleared.

Fee

- The course fee is INR 11,800 per participant inclusive of GST. For UAE teachers/ schools, the fee is AED 570 per teacher.
- Participants can use free accounts during the course, but a paid subscription to any one of ChatGPT / Claude AI / Gemini for 1 month (US\$ 20) is highly recommended.