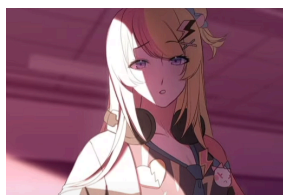


forward. Typical grief stuff	The future is a shambling mess of dead ends.	Future is a crossroad and a dead end tangled together in a mess	The future is a mess of forks and dead ends.
Even though im not exactly sure what im doing, i know that i can help people with this power. The redeemable - people with non tainted souls? Just how much of an effect does having a tainted soul have	나는 불확시한 앞에서서 구원할 수 있는 자득을 구원하고 I stand before the unknowable and save the redeemable.	나는 불확실한 앞에서서 구원할 수 있는 자들은 구원하고 I stand up in front of uncertainty and save those who I can	나는 불확실함 앞에서서 구원할 수 있는 자들을 구원하고 I stand in the face of uncertainty, saving those I can,
Obvious reference to the grl that died?	그러지 못하는 자들을 속수무책으로 목격한다. I watch helplessly as those who cannot are destroyed.	그러지 못하는 자들을 속수무책으로 목격한다 And witness those who I can't save	그러지 못하는 자들을 속수무책으로 목격한다. and witness helplessly those I cannot.
This one is straightforward	그러나 나 역시 그 거대한 계획에 대해 무력하다 But I, too, am powerless against the grand scheme of things.	그러나 나 역시 거대한 계획에 대해 무력하다 But I am also powerless against grand plan	그러나 나 역시 그 거대한 계획에 대해 무력하다. But I, too, am powerless against the grand scheme of things.
In "MY" ___ soul implies perhaps the answer isnt inwards, think outside the box Could be pointing to that man with	내 공허한 영혼 속에서 답을 찾을 수 없었다 I cannot find a container in my empty soul.	내 공허한 영혼 속에서 답을 찾을 수 없었다 I couldn't find an answer in my blank soul	내 공허한 영혼 속에서 답을 찾을 수 없었다. I couldn't find the answer in my empty soul.

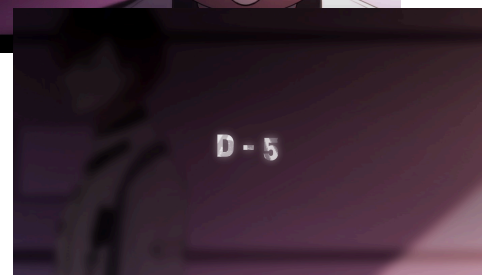
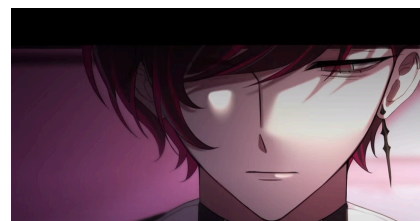
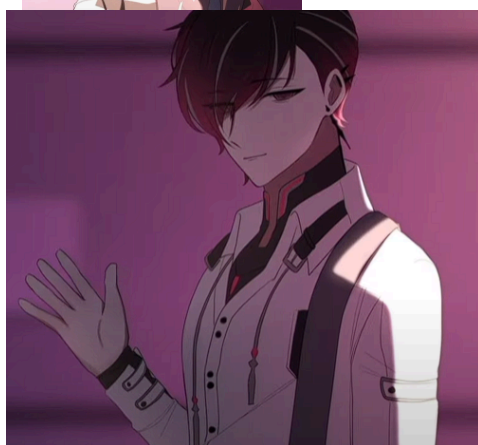
the clock? (The Director?)			
----------------------------	--	--	--

The FIVE stages of grief as they appear in Ver's lore video

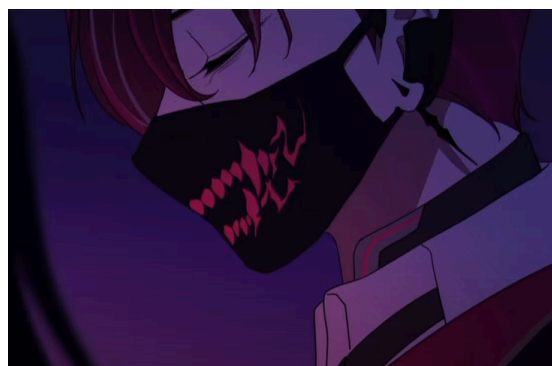


Examples of **Denial** (easily understood feeling numb)

1. Overall silence in the opening few scenes
2. Ignoring people trying to talk to him around 43~ seconds
3. Avoiding eye contact with Kotoka, barely offering her a small wave



SHIFT SHIFT SHIFT, the music changes, the masc goes on, the entire atmosphere changes



Examples of **Anger**

1. <https://youtu.be/p6UFgNxbHj8?t=82> just that entire moment.

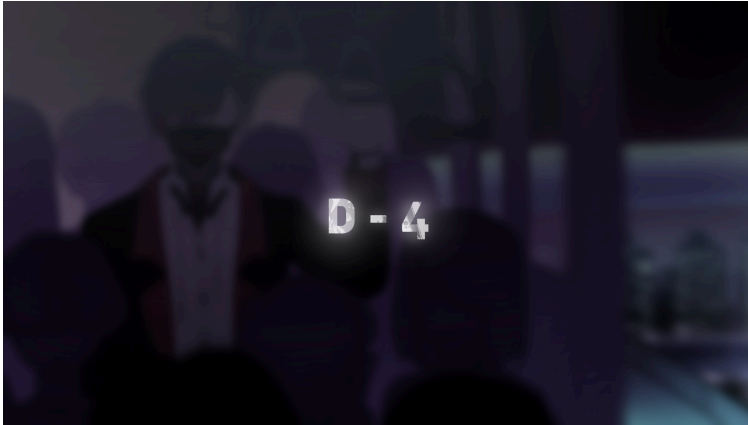
Sn, although his actions dont fit the typical anger reaction hr its more the music and the colors that set the theme. The darkened clothes, the ominous music with those heavy beats. Even the camera angle, looking up at him as though he is of power or even as the music seems to suggest, dangerous.

D-4 Anger

Teaser post

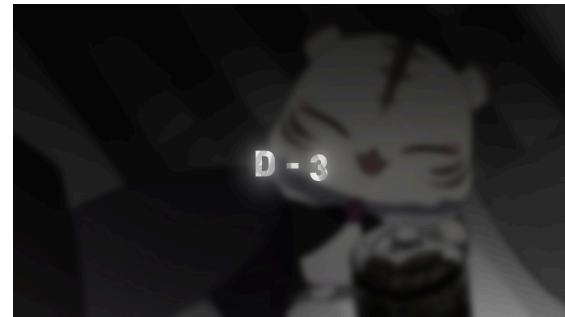
Im not sure how this scene is meant to represent anger other than the above implied emotion of the scene





Bargaining

- This could be somewhat of a reach, but [this site](#) defines bargaining as “wishing we could go back and change things in the hope things could have turned out differently”
- The Nightmare could represent Ver’s mind wanting to go back and change what happened?



Depression

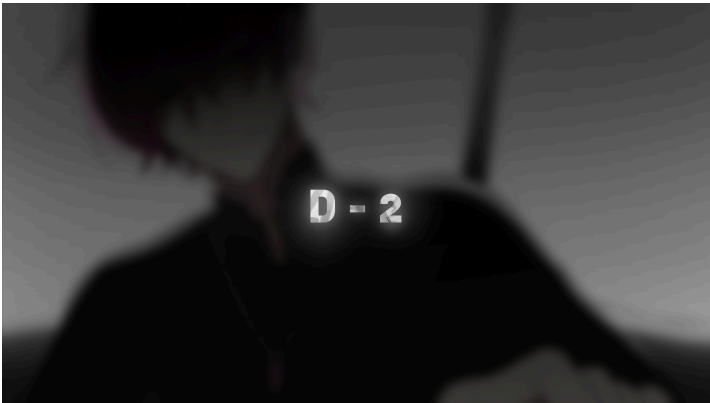
Still also a reach ;-;

1. The images of his friends/people he knows, flashing before his eyes almost
A. Could this represent the “Life flashing before your eyes” thing, as if Ver is drowning?

B. Is the water physical (As in did the woman physically push him into a body of water) or **emotional** (As in is he drowning in his own thoughts and struggling with mental health -

causing his life to pass by in review?)

2. When he just sits there breathing at around 6~ mins. Like a depressive rut almost or he could just be processing yk the being thrown into a body of water



Acceptance isnt specifically shown but could be simply after the events of the lore video, Ver's 'normal' life at xsoleil institute?

*Ver himself said that this lore video is meant to represent the five stages of grief in [lore 2.0 after party](#)



WHO THE FUCK IS SHE

What is her relationship to Ver?

What does Ver have her soul?

What do her blue eyes mean?

Whats with the creepy smile in the reflection of Ver's eyes? Tainted soul related?



Theory time baby

Shes the first soul that ver ever looked at, her soul/destiny was dark/black meaning it was tainted. Ver was most likely trying to change her destiny that whole water thing happened. Because he has nightmares about this event, what if he failed and caused some sort of horrible thing. Maybe she died because Ver tried to change her destiny and failed, leading not only the director to find him. (This could explain the clock and Ver would still be in her soul, the clock could represent her life?)(This could also explain the necklace as a pendulum, maybe something of a [guide](#), referencing common witchcraft things?)

'The paths not taken are lives that could have been.'

She totally died because of some sort of choice Ver made?

[Even though he saw her future, he couldnt change what happened theory](#)

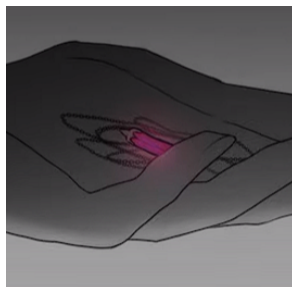
What in the fresh heeeeeelllllll is going on here

Who is he?

He shares the blue eyes

Why the clock

Does the necklace he gives Ver represent a pendulum?



WHATS WITH THOSE STUPID BLUE EYES = CER POSSESION



Theory a (i like this one because its mine)

Could this man be the director of xsoleil institute? In most of their lore videos (the director doesnt actually appear in Ver's first one) the director is shrouded in mystery and darkness, which would be in like to the cryptiveness of this man and his

funky clock

Also is the



Why the blue eyes?

Blue is [typically attributed](#) to calmness, serenity but it can also mean **DEPRESSION**, Predictability, Weakness

Continuing with my running theory - say Ver failed to save this womans soul and that fact haunts him. He feels WEAK.

Not only this but these events are in the bargaining / DEPRESSION part of the video

Are the blue eyes a symbol for how Ver feels weak for not being able to save her?
Going as far as having nightmares over it and going through grief over her.



The fuck is going on here

<-

-> [melatonin](#) reference
or am i reading way too far into that



[Also](#) that is on the to analyze list - will watch asters vod in the morning

This is pretty accurate



HEADMASTER WHILE DREAM (bw = dream) blue shadow. Not the headmaster he knows and loves though

90 perc dream things didnt actually happen but happened irl

Timestamp 47 mins, express change in time

THE LONG HAIREK KID W THE DIRECTOR IS HIM>>???? First time meeting the headmaster, gave him the necklace. He found it on ver he said

Shadows, blue or not blue.

Kneeling with director<- blue shadow part NEVER HAPPENS IN REALITY

TEXT COLOR IS VERY IMPORTANT



CER TAKING OVER NIGHTMARES AND FUCKING WITH VER LMAO

STOPPED WATCHING AT 57 TO OPEN CARD PACKS WILL UPDATE