



Product Description: 2-in-1 Dual Shade System



Quality Materials

- Crafted with a high-grade aluminum frame and for unmatched durability and performance.

Solar Protection

- Blocks heat and harmful UV rays to keep your space cool and protected.

Privacy Screen

- Enjoy comfort and relaxation without worrying about onlookers.

PRIVACY

- Enhance your privacy while maintaining superior ventilation and outward visibility.
- Easily convert the shade with the touch of a hand for an effortless awning functionality.

PHIFER SUNTEX® 95 Privacy Screens

- Available in PHIFER or Textilene screen fabric options.
- Designed to provide optimal shading and privacy solutions.

Key Features

- **Custom Manufactured:** Each system is made to order with sizes up to 22 feet wide and 12 feet high.*
- **Fastest Turnaround Time:** Industry-leading speed for custom orders.
- **Durable Frames:** Built with powder coated 2x2 aluminum frames, splined with high-durability materials that withstand harsh Arizona summers.

Available Hardware Colors:

- White



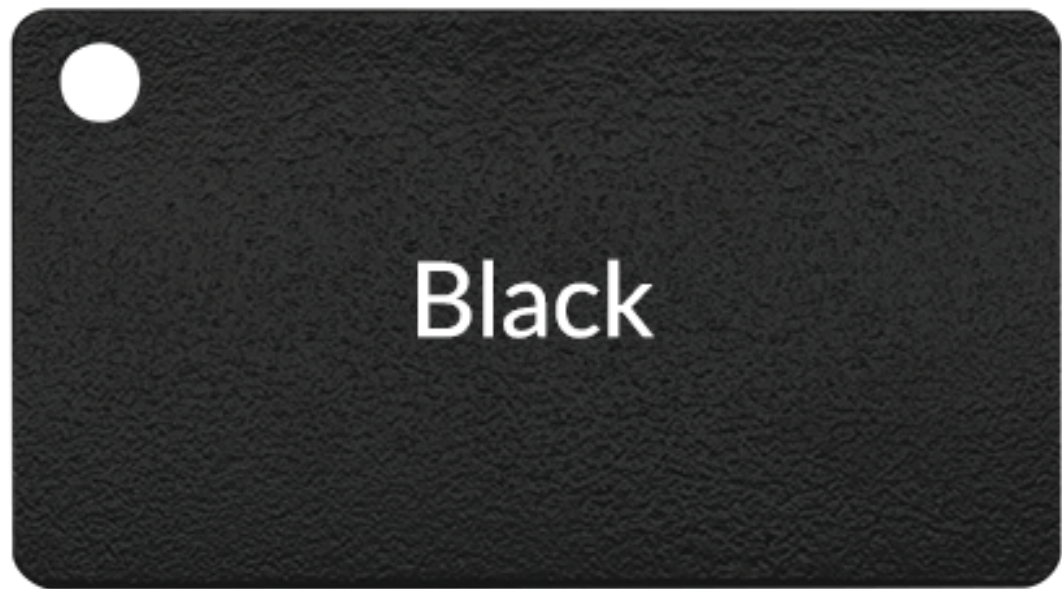
- Bronze



- Beige



- Black



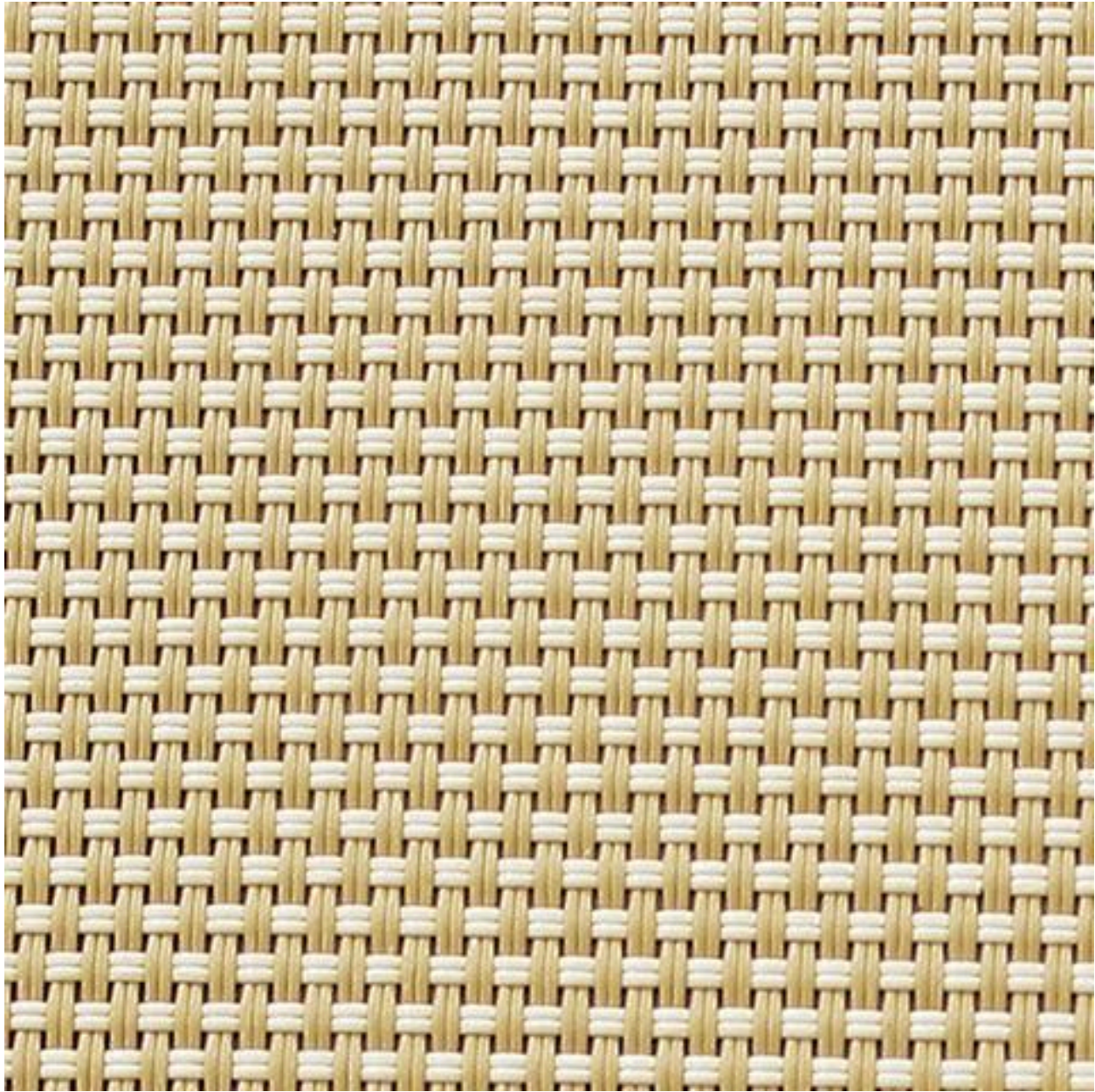
Screen Fabric Advantages

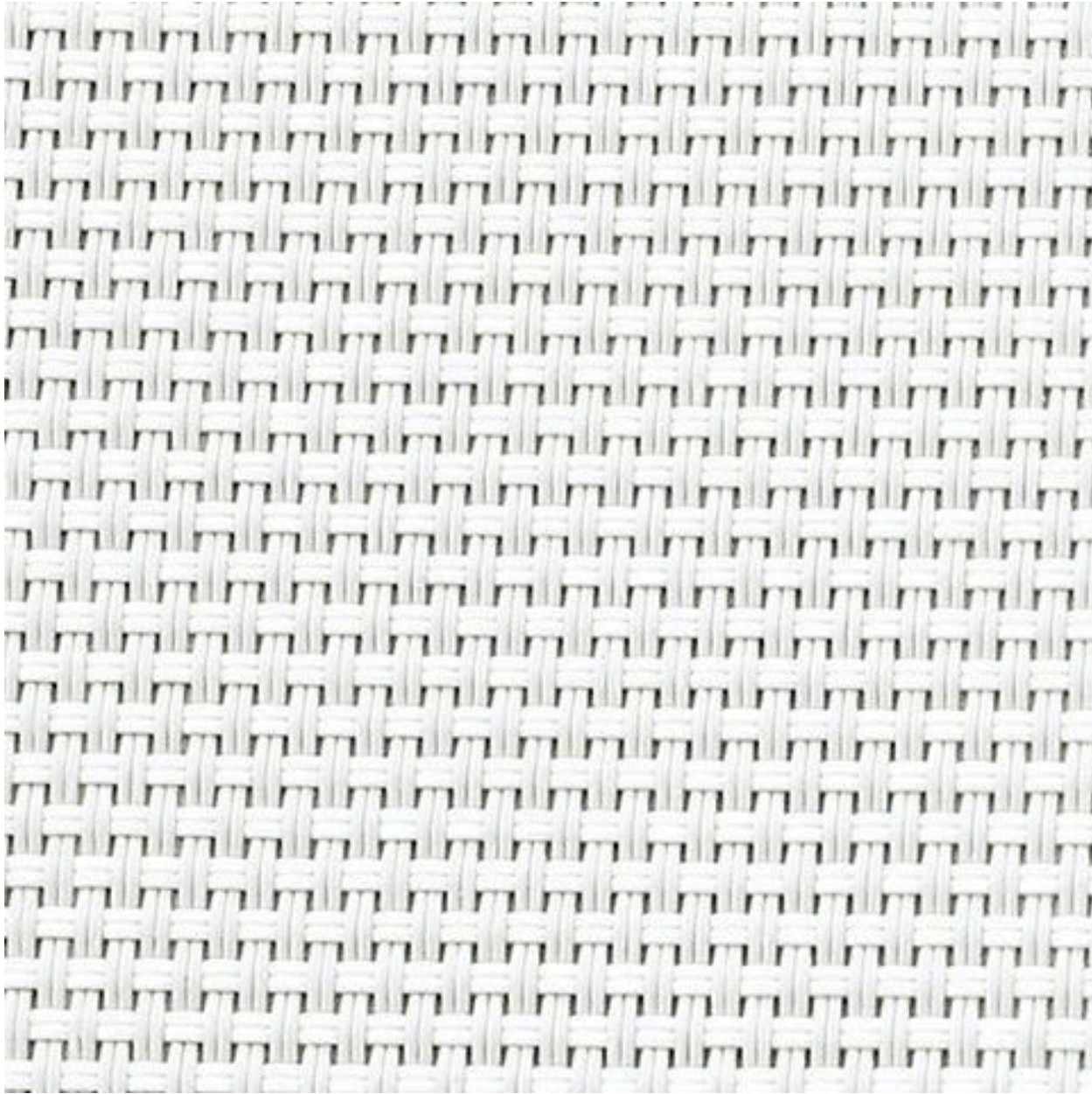
- **Flame Retardant:** Safety-certified for peace of mind.
- **GREENGUARD® Gold Certified:** Meets rigorous standards for low chemical emissions and indoor air quality.
- **Melanoma International Foundation Approved:** Recognized for effectiveness in preventing sun damage to the skin and eyes.
- **10-Year Warranty:** Comprehensive coverage for long-lasting performance.
- **Microban® Protection:** Inhibits the growth of stain-causing bacteria, mold, and mildew.

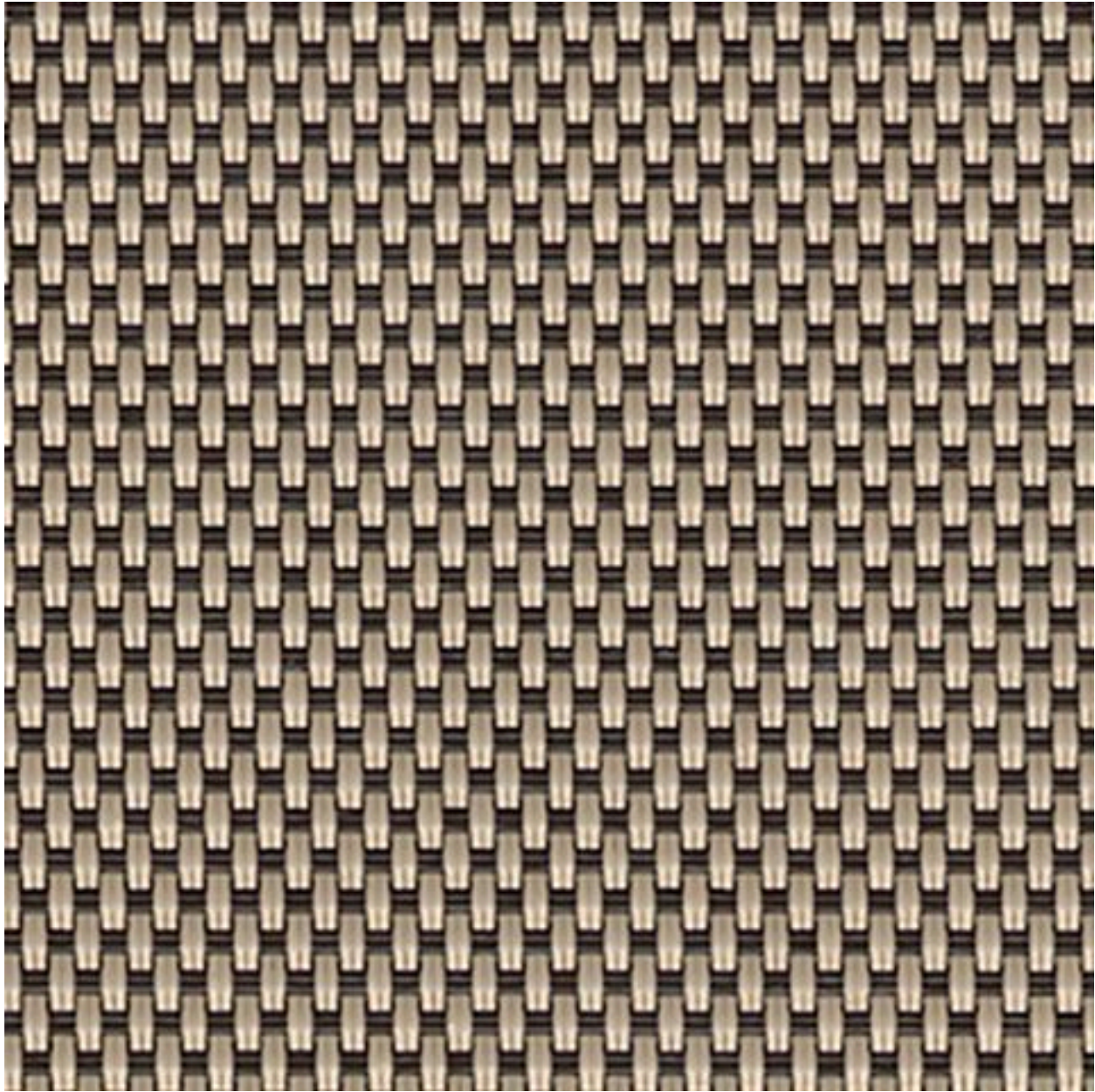
- **Proudly Made in the USA:** Exceptional quality you can trust.

Customization Options

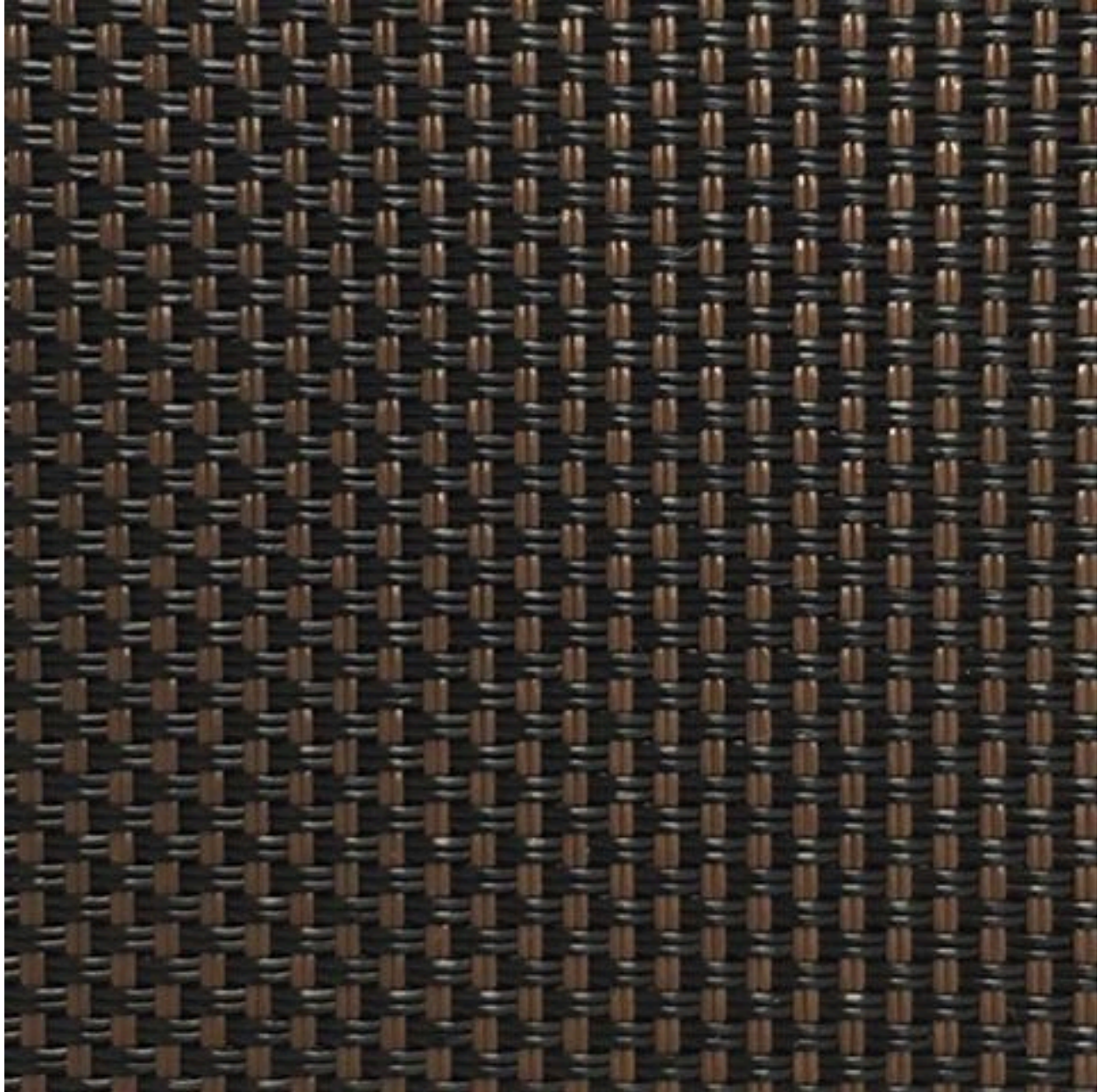
- Choose from a variety of colors and configurations to match your specific needs.

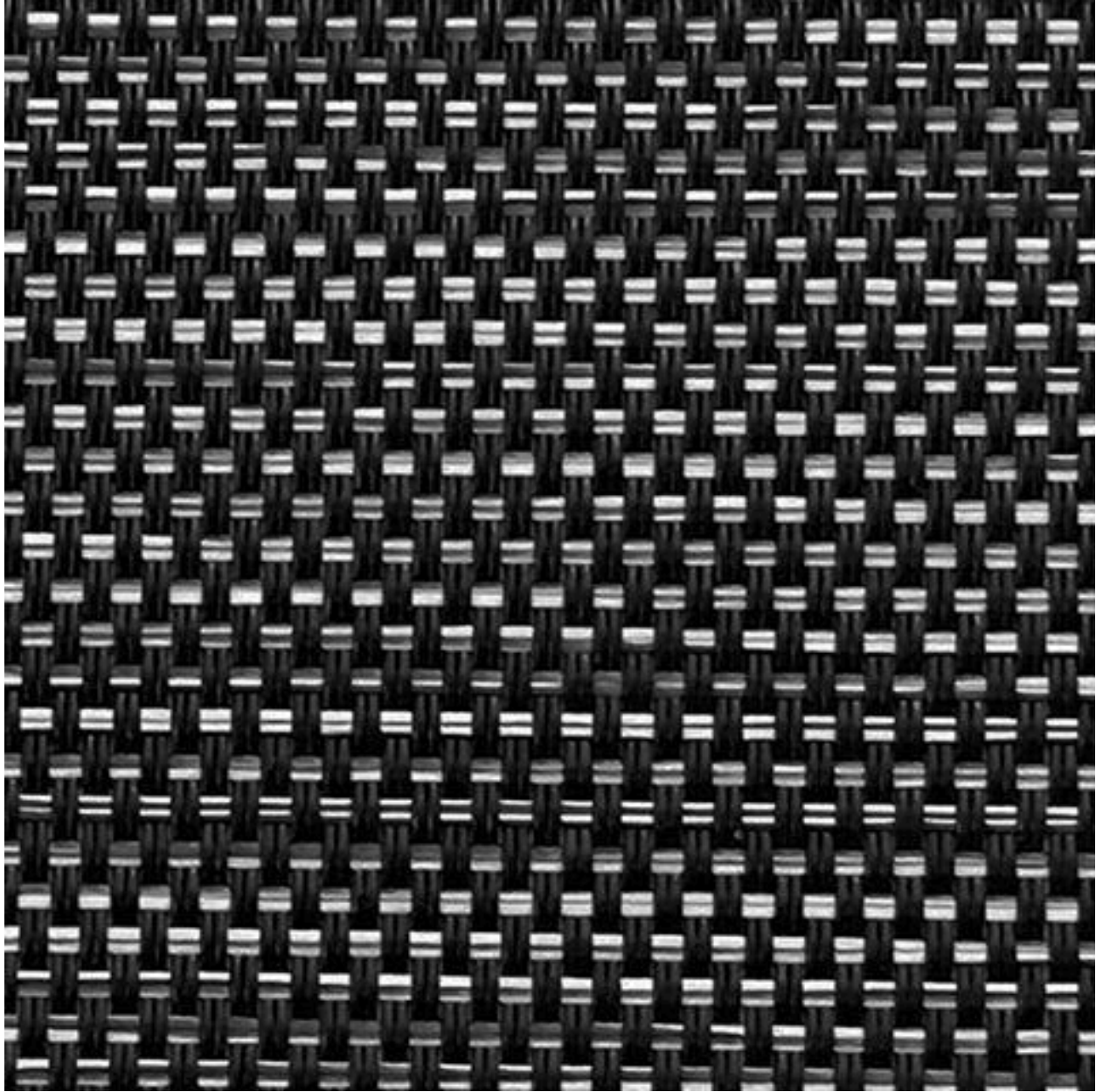


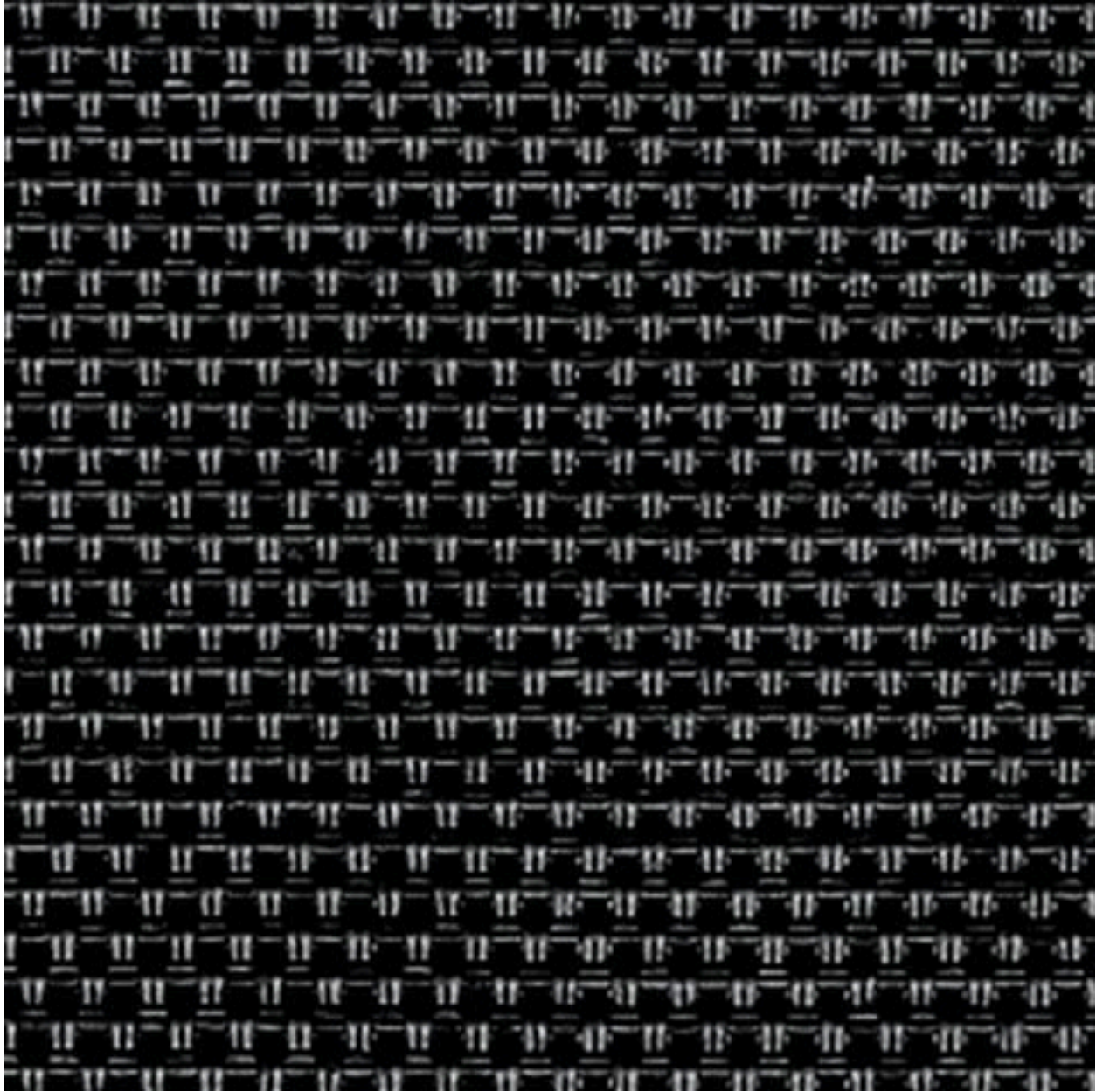












Note: Dimensions may vary depending on installation specifics. Please consult our team for personalized sizing guidance.

For a premium, functional, and stylish solution to your shading needs, the 2-in-1 Dual Shade System delivers superior performance and quality.