

# SONC - Mt. Ashland Grouse Gap Loop Trail

**Rating:** Intermediate

**Location:** Mt. Ashland Sno-Park

**Outing Distance:** 6.7 miles

**Starting Elevation:** 6600 feet

**Elevation Change:** gain of 650 feet

**Estimated Tour Duration:** 4 hours

**Type:** Loop

**Driving Distance & Travel Time:** from Ashland: 23 miles / from Medford: 35 miles

**Driving Donation:** short / \$5

**Trailhead Location:** Mt. Ashland Nordic parking area

**Trail Markings:** Nordic (blue diamonds)

**Trail Description:** roadway 80% / hiking trails 20%

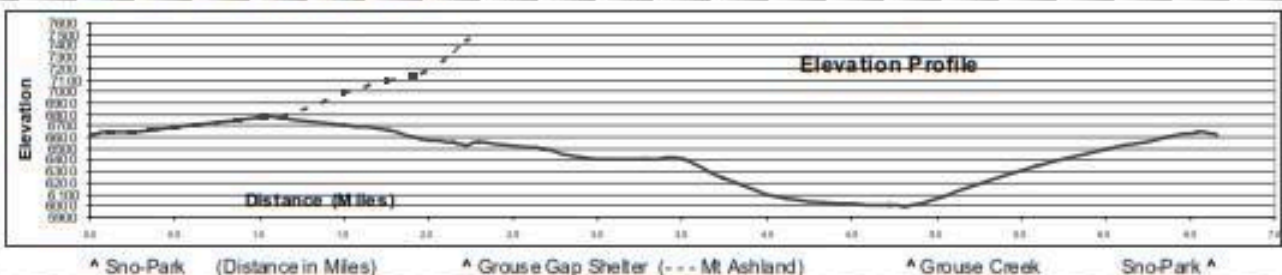
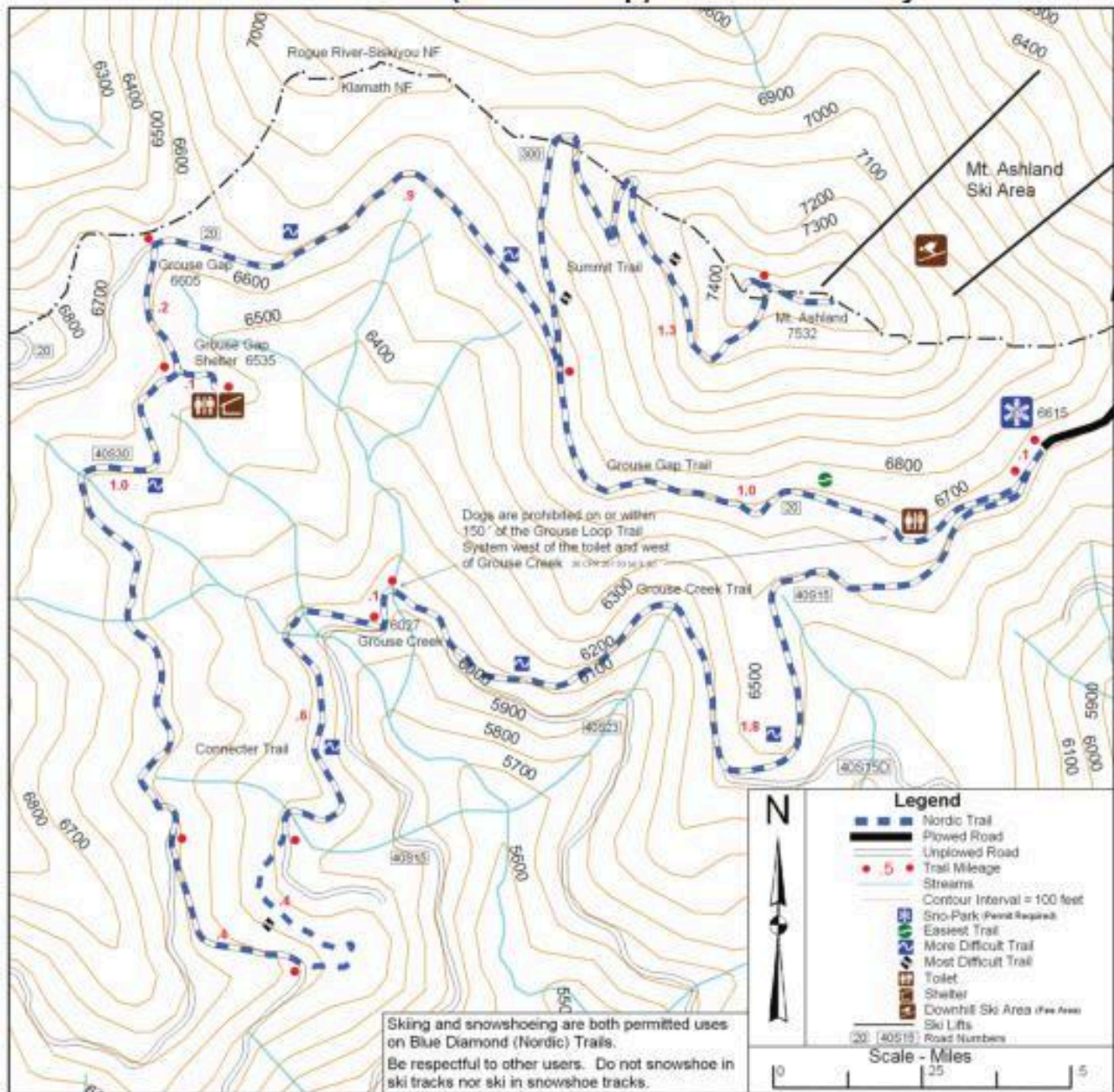
**Maps:** Created by the Oregon Nordic Club in cooperation with the Klamath & Rogue River-Siskiyou National Forests.

**Course Description:** Follow Road 20 past the bathrooms on the left for one mile. Where the road forks, stay to the left and traverse the open bowl. The trail descends to Grouse Gap for 1.9 miles. The shelter is 0.3 miles to the south. Continue from the shelter via the “connector” section of the trail. This trail section continues out the road (south) from Grouse Gap. The road will descend through forest and meadows. After 1.4 miles you come to an intersection where you descend on the left (east) spur. This grade increases as you drop on this spur. Continue to bear left and drop through the trees on a fairly steep grade, then traverse a meadow. The last section through the trees is short and just above a road. When you intersect the road grade, continue left (north). After about 0.6 mile you intersect another road (#40S15) where you turn left again (north). After 100 meters you cross Grouse Creek. The next 1.8 miles is a continuous climb up and back to the Sno-Park.

**Special Considerations:** Exposure to weather can be severe, and visibility can deteriorate rapidly.

file: SONC -Grouse Gap Loop

# Mt Ashland Southside (Grouse Loop) Nordic Ski Trail System



	<b>Klamath National Forest</b> Happy Camp/Oak Knoll Ranger Districts 63822 Highway 96, P.O. Box 377 Happy Camp, CA 96039	<b>Rogue River-Siskiyou National Forest</b> Siskiyou Mountains Ranger District 645 Washington Street Ashland, Oregon 97520	<b>Oregon Nordic Club</b> Southern Oregon Chapter PO Box 1209 Phoenix, OR 97535	
--	--------------------------------------------------------------------------------------------------------------------------------------	-------------------------------------------------------------------------------------------------------------------------------------	------------------------------------------------------------------------------------------	--

This map was created by the Oregon Nordic Club in cooperation with the Klamath and Rogue River-Siskiyou National Forests.

Updated: 29 Jan 2010 *gof*