



Management

Steps Each Morning

1. Bring water from the dorm.
2. Bring 1 cup chicken feed from the bag.
3. Open Tractor Door
4. Remove white tray from the tractor, set on grass and pour chicken feed in the tray.
5. Remove the small black rubber bowl from the tractor, and pour water into the bowl.
6. Check to see that all hens are OUT of the tractor, and close the door.
7. Watch, and carefully roll the chicken tractor one length onto a new patch of grass.
8. Open the chicken tractor door, and place the large black tub on the door sill.
 - a. to prevent door from blowing blow shut

Steps Each Night at DUSK - BEFORE DARK

9. Bring water from the dorm.
10. Move the small rubber water bowl inside the chicken tractor.
11. Close and latch the chicken tractor door.
12. Collect eggs
13. Wash eggs in the kitchen sink with warm (not hot) water and soap.
14. Place eggs in the dorm refrigerator.
15. Staff will allow whoever they decide to eat eggs, when they decide.



Why is is called a chicken tractor

?



Quiz

Steps Each Morning

1. Bring _____ from the dorm.
2. Bring 1 _____ chicken feed from the bag.
3. Open Tractor _____.
4. Remove _____ tray from the tractor, set on grass and pour chicken feed in the tray.
5. Remove the small black _____ bowl from the tractor, and pour water into the bowl.
6. Check to see that all hens are _____ of the tractor, and _____ the door.
7. Watch, and carefully _____ the chicken tractor one _____ onto a new patch of grass.
8. Open the chicken tractor door, and place the large black tub on the door _____.
 - a. to prevent door from _____ blow shut

Steps Each Night @ DUSK (BEFORE DARK)

9. Bring _____ from the dorm.
10. Move the _____ rubber water bowl inside the chicken tractor.
11. _____ and _____ the chicken tractor door.
12. Collect _____
13. _____ eggs in the kitchen sink with _____ (not hot) water and _____.
14. Place eggs in the dorm _____.
15. Staff will allow _____ they decide to eat eggs, whenever they decide.

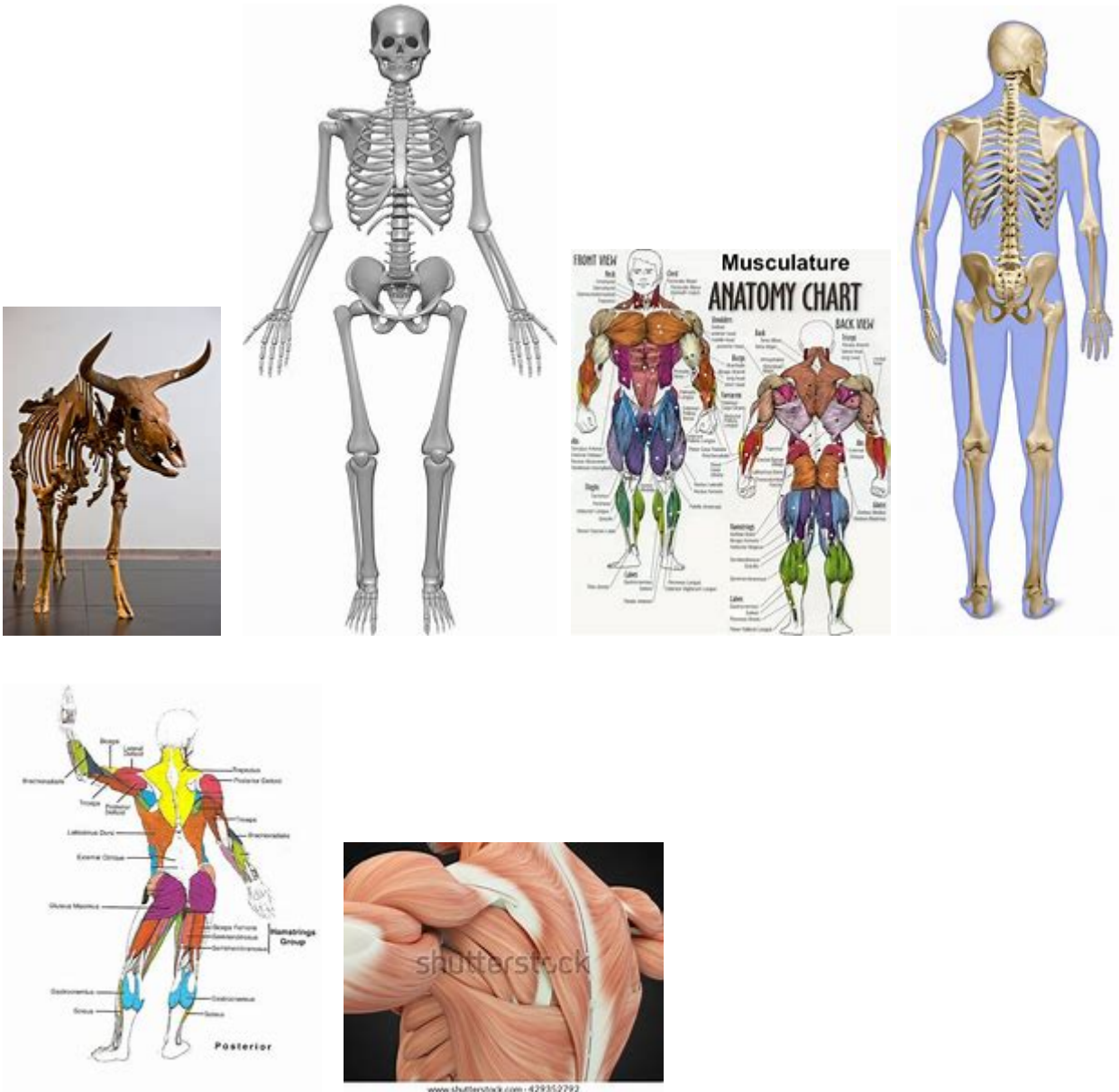
Chicken Tractor Designs

- [Chicken Tractor Good Design Practices, Tips & Tricks For Building, Ideas - YouTube](#)
- [Chicken Tractor \(The Build\) - YouTube](#)
- [Raising Chickens 101..Best advice and education you'll find anywhere on the web! - YouTube](#)
- [Beginners Guide To Raising BACKYARD CHICKENS - YouTube](#)
-

Chicken Notes

Livestock Judging:

- [Livestock Judging Walk Through Beef - YouTube](#) (32m)



PVC Chicken Tractor

- \$6.89 ea. Schedule 40 PVC 1 ½" x 10'
- \$1.14 ea. Schedule 40 90 degree Elbow (Short)
- \$1.22 ea. Schedule 40 PVC Sanitary Tee
- Nesting Box 12" wide X 12" long X 18" tall
- \$4.99 ea. 2 in. x 3 in. x 8 ft. Select Framing Stud (roost boards)
 - 14" apart horizontally
 - 12" headroom
- \$14.66 ea. 2 in. x 4 in. x 12 ft. #2 Prime Cedar-Tone Pine Pressure-Treated Lumber

Elbow



Sanitary Tee



