

WebradioFS - user manual

Status: work in progress
Last update 15 Nov 2022

This is a plug-in running in enigma2 sat boxes under python3 and higher

Author / rights

The original author of the plug-in is shadowrider. He made this plugin public in November 2022 (at that time running under python), declared it open source and posted his codings on <https://github.com/fs-plugins/webradioFS>.

Twol, moderator on world-of-satellite.com, converted the plugin to run under python3 and gave it a second life. It was tested by one user (nekrub2) and found ready to be published.

What can you do with this plugin?

Radio

- Playing your favourite internet radio stations
- Creating your favourite list on sqlite and import it into this plugin
- Importing streams, set-up on a server and define them as your favourites.
- Recording streams and playing them (mp3 files).

File playing

- Playing your mp3 library on your hard disk or USB stick attached to the box. (You may also play FLAC files, but I would only recommend this if you had enough RAM.)

Settings

- Managing your settings and favourites
- Setting the screensaver appearance and behaviour
- Backup and restore your settings and favourites
- Defining the start time and set a snooze time
- Defining the location of your files / recordings

- Defining the file playing mode (file order, name order random) and endless play

The keys

Menu

This opens the menu for all the settings

Recording

Recording – stop recordings

Yellow

Select your favourites

Blue

Edit / delete your streams / stations (not very user-friendly - would rather do it through SQLite and send via FileZilla from the PC to the sat box.)

Guide/EPG

Show details on stream / radio station (including URL)

Help

This shows all the possible commands and the keys on the remote

Radio



These are my favourite radio stations in the Group Standard. On the right hand you see the picture coming with the stream, very often it is the album cover of the song.

Below the station information you see the following action tools

Red
Green

Stream Tools
Chilling

Yellow	Show all Favourite Groups
Blue	Edit the stream
Guide	Show details on the stream (including URL)
Help	Shows all possible commands and the keys on the remote
Record	Allows you to record the stream from your radio station. Beforehand you need to install certain modules (see Record Menu). Depending on the setting only complete streams are recorded or all.

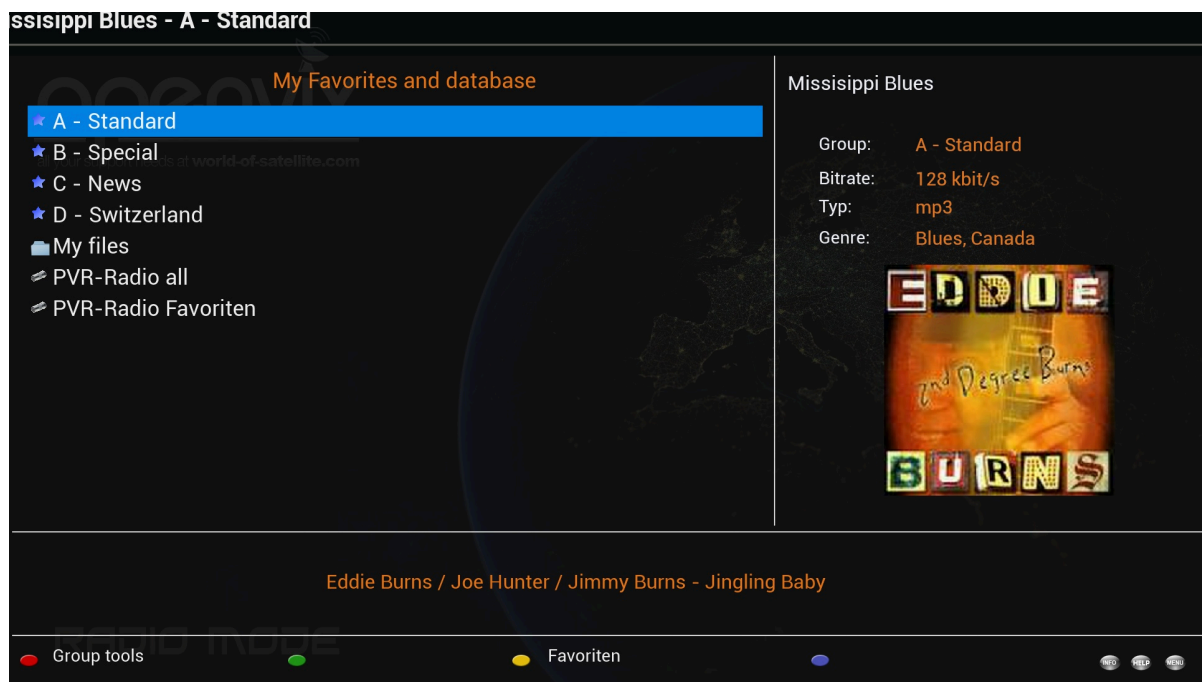
Screen-saver on Radio stream

If you have set the screen-saver on, after a while you get this picture



The colour of the font and the background can be modified in the screensaver-settings.

Favourites



Here you see that I have created four groups of favourite radio stations (A - D). When clicking on B, I see the stations I stored within. Below the favourite groups is the folder MyFiles. In this folder I see my recorded music and all my mp3 files I have on my USB stick.

PVR Radio all/favourites means I also can listen to the sat radio station.

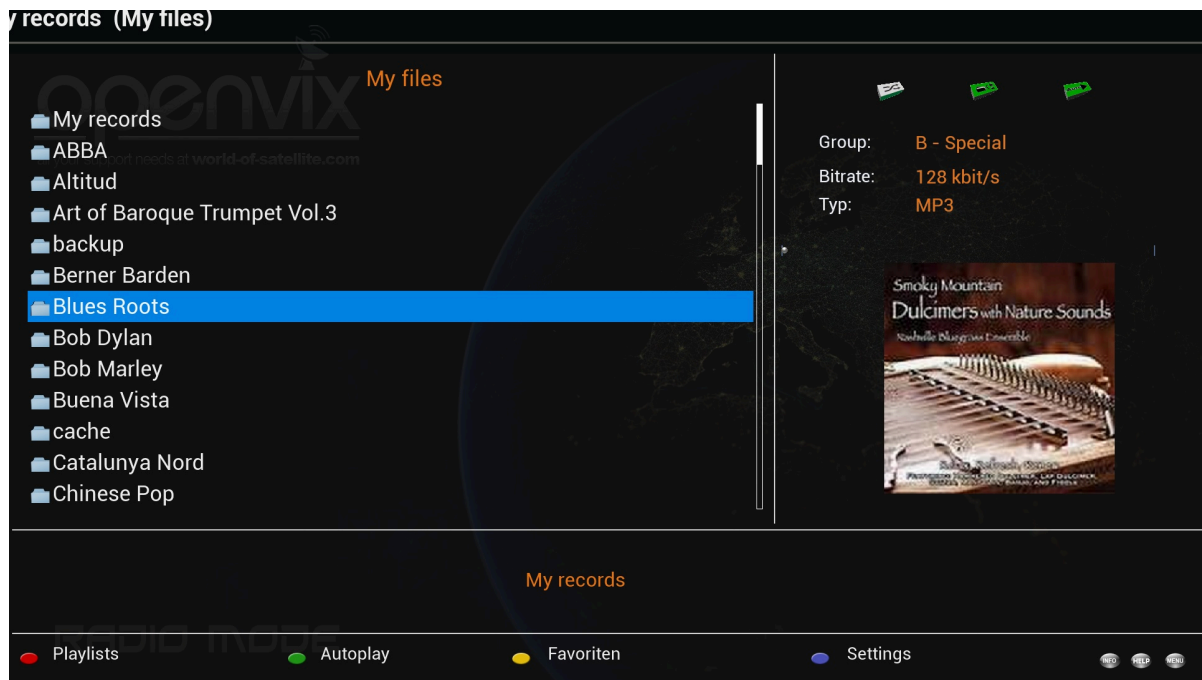
Red button Group Tools, allowing to add / modify the favourite groups

Importing stations from radio browser

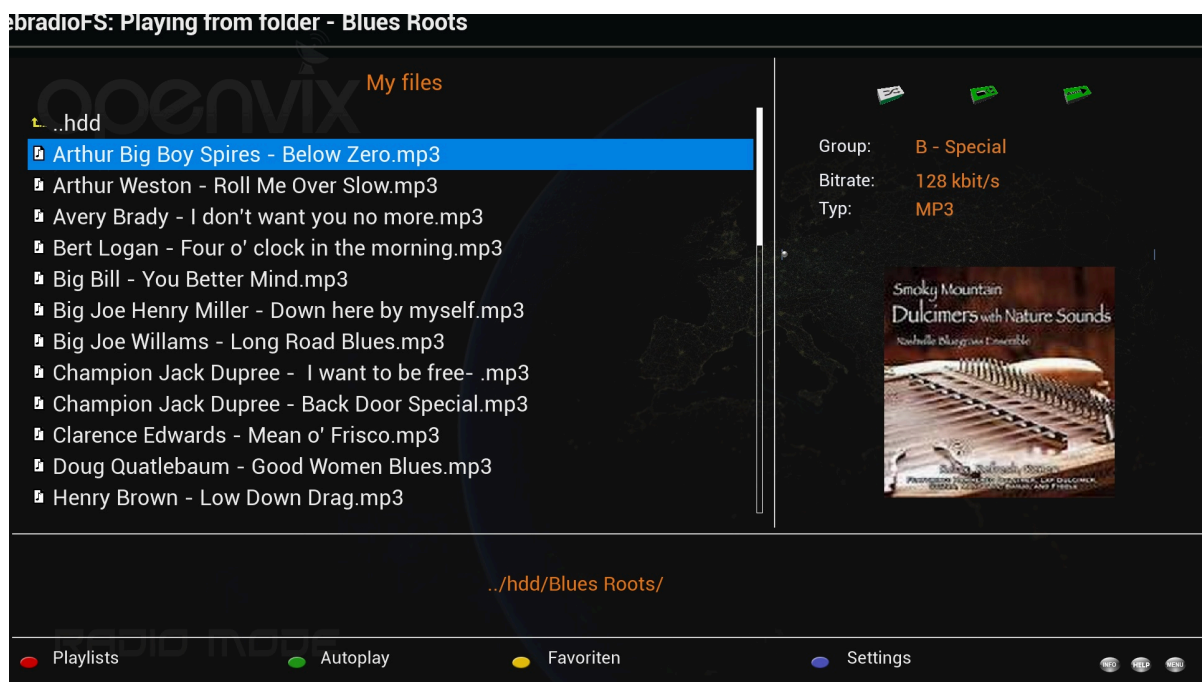
Under Tools and Extras > Import from radio browser you can see streams from 212 countries. These streams stay only as long as you are in webradioFS. After importing the country, search your streams and add them to your favourites.

File playing

Here you see my folders on my USB stick



After having clicked on one of my folders I see the music files



Here are my songs I can play by clicking ok
Depending on the setting you can play the files continuously by name or at random.

Below is the screen-saver on the music files



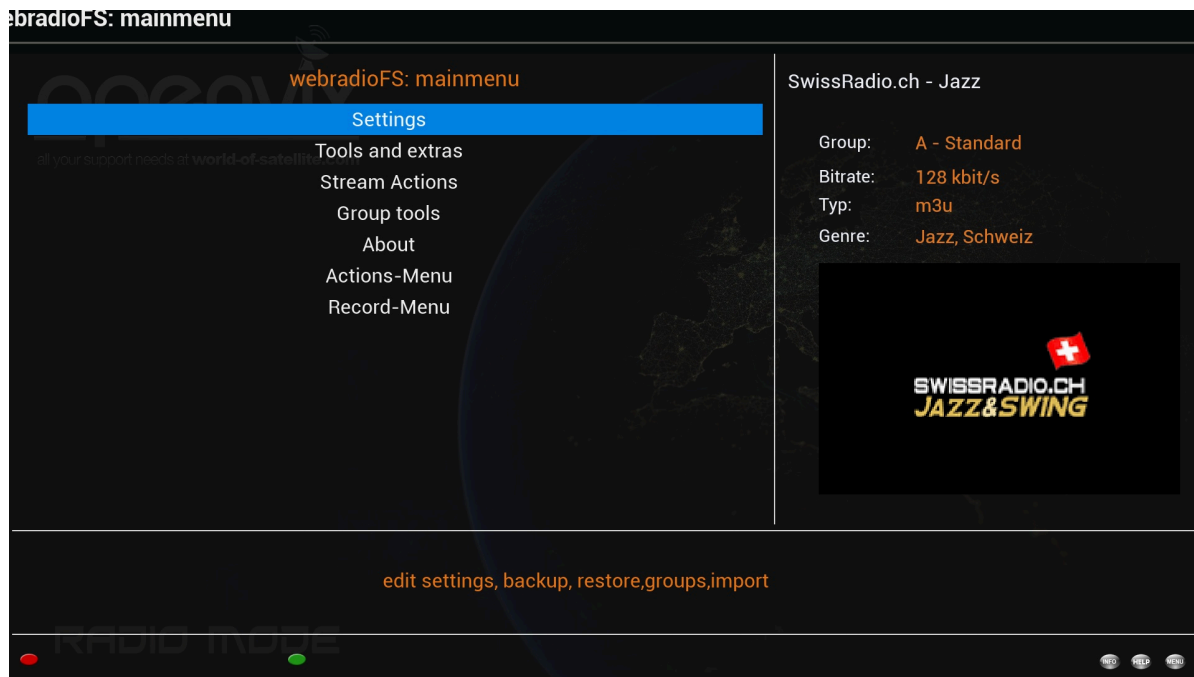
My files

22:04

Friday, 11.11.2022

Arthur Big Boy Spires: Below Zero

Menu - Settings / Tools



Here you have the possibility to adjust / modify your plugin

Settings

Settings-basics

Here you can expand / reduce the setting options, start streams automatically, define how to search the pictures, define the sorting order, switch on picons, define where you would store your favourites / settings. > the default location is /etc/ConFS/. For picons, cover pictures and recordings I recommend setting the path to your hdd respective to your USB stick. These are the variants for searching pictures: 1 = google search, 2 = Bing, 3 = Apple/iTunes.

Additional functions on/off

Here you can individually switch on/off functional menus. I have them all on.

Screensaver settings

This allows you to define the screensaver art, the time to screen saver (0 means off), have the text and cover either still or moving, define the colour for the screensaver labels and background.

Don't forget to push the green button to save your changes.

Display settings

Here you can define the way of text lines and the way of scrolling. For me the default is fine.

File-Play settings

Define where you have stored your music files, and how you would like to play your music files random and endless.

Record settings

Define here where the recording should be stored (hdd is recommended), whether the recording should be stored in a sub-directory (the station name becomes the folder name) and whether you would like to store only complete streams or everything you recorded. Furthermore there is a timer function very similar to the enigma2 timer, allowing you to zap at a set recording times.

Tools and extra

Here you can import your list of favourite stations from a database or from the radio-browser project, backup your webradioFS favourites and settings or restore them after importing a new image. > Or you can delete all your settings and start from scratch.

Group tools

Here you create your favourite groups for your radio stations.

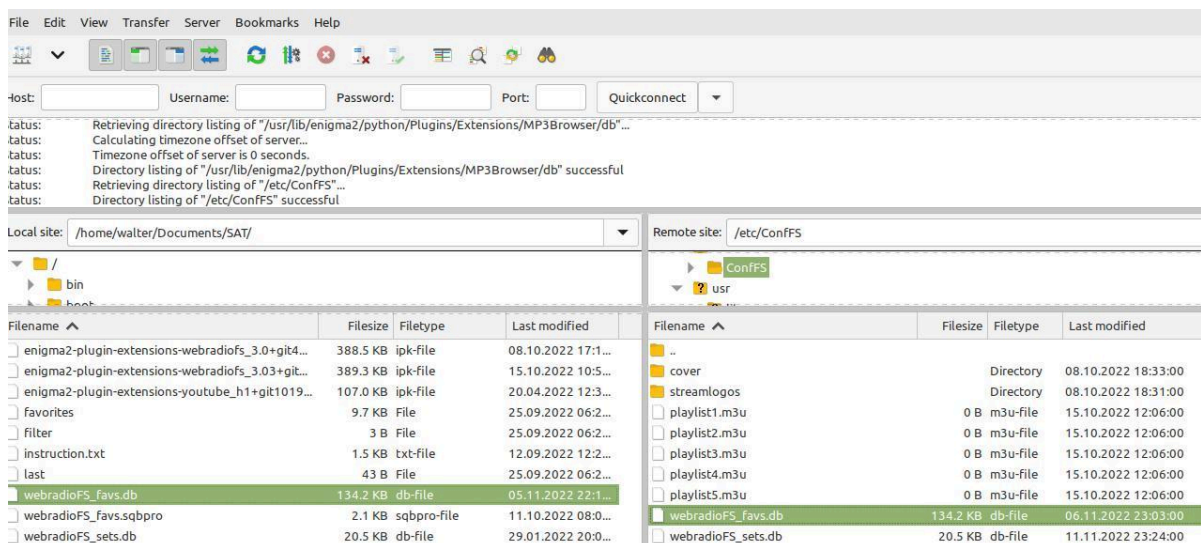
Record menu

Check whether you have the recording modules installed. If not you can install them, allowing you to record streams from the radio stations.

Annex - Adding and modifying streams using DB Browser for SQLite and FileZilla

A. Downloading the Favourites to your PC

Start FileZilla and connect to your sat box. The webradioFS_favs.db database is per default stored in the folder /etc/ConfFS



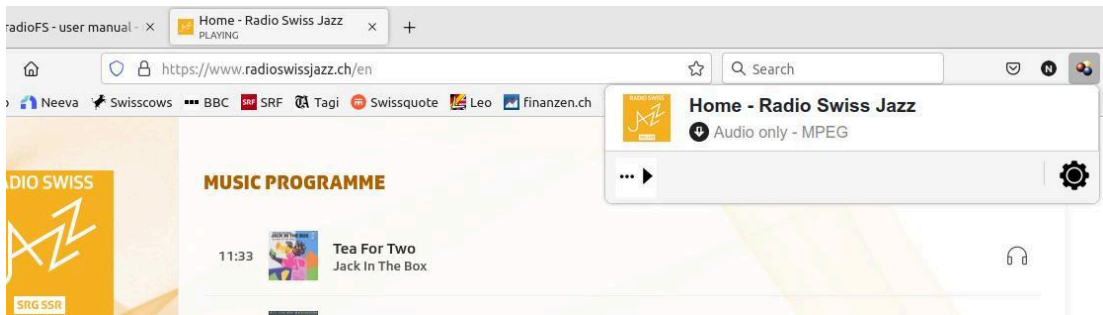
Double-click on the file webradioFS_favs.db.

- B. Open the database on your PC using DB Browser for SQLite
Click on "Browse Data". In the table "groups" you can add or modify your groups.
On the table "streams" you can add and modify a radio station.

stream_id	name	descrip	url	typ	genre2	defekt	bitrate
13	31 Radio SRF 4 News	News	http://streaming.swisstxt.ch/m/drs4news/...	mp3	News & Politik	0	128
14	32 Arrow Classic Rock	De Muziek van je...	https://stream.gal.io/arrow	mp3	Niederlande	0	128
15	34 Mississippi Blues	A MISSISSIPPI ...	https://jenny.torontocast.com:8008/stream	mp3	Canada	0	128
16	35 Radio Cubana	Radio 100% ...	http://listen.radionomy.com/radio-...	m3u	Salsa	0	128
17	36 RMF Cuba	Muzyka kubańsk...	http://195.150.20.9/CUBA	aac	Latin	0	48
18	37 Dash Radin - The Oldies	Dash Radin is a	http://ice55.securenetsystems.net/DASH347	mp3	Frøche/peri	0	128

C. Searching your radio station on your web browser and looking up the details using Video DownloadHelper

Go to the webpage of the radio station and start playing. In the Video DownloadHelper you see the stream and can read out the details



Copy the URL or open the details to read all information from the stream.

D. Adding the new stream

Create the new stream in SQLite and paste the URL, the stream type and the Bitrate.

When finished, you save your changes in the database and upload the webradioFS_favs.db to the sat box.

