

## Crud operation connection procedure using maven tool

---

### 1. Load JDBC Driver

```
Class.forName("com.mysql.cj.jdbc.Driver");
```

### 2. Establish Connection

```
Connection con = DriverManager.getConnection (
    "jdbc:mysql://localhost:3306/databasename",
    "root",
    "password"
);
```

### 3. Create Statement

```
Statement stmt = con.createStatement();
```

### 4. Execute SQL Query

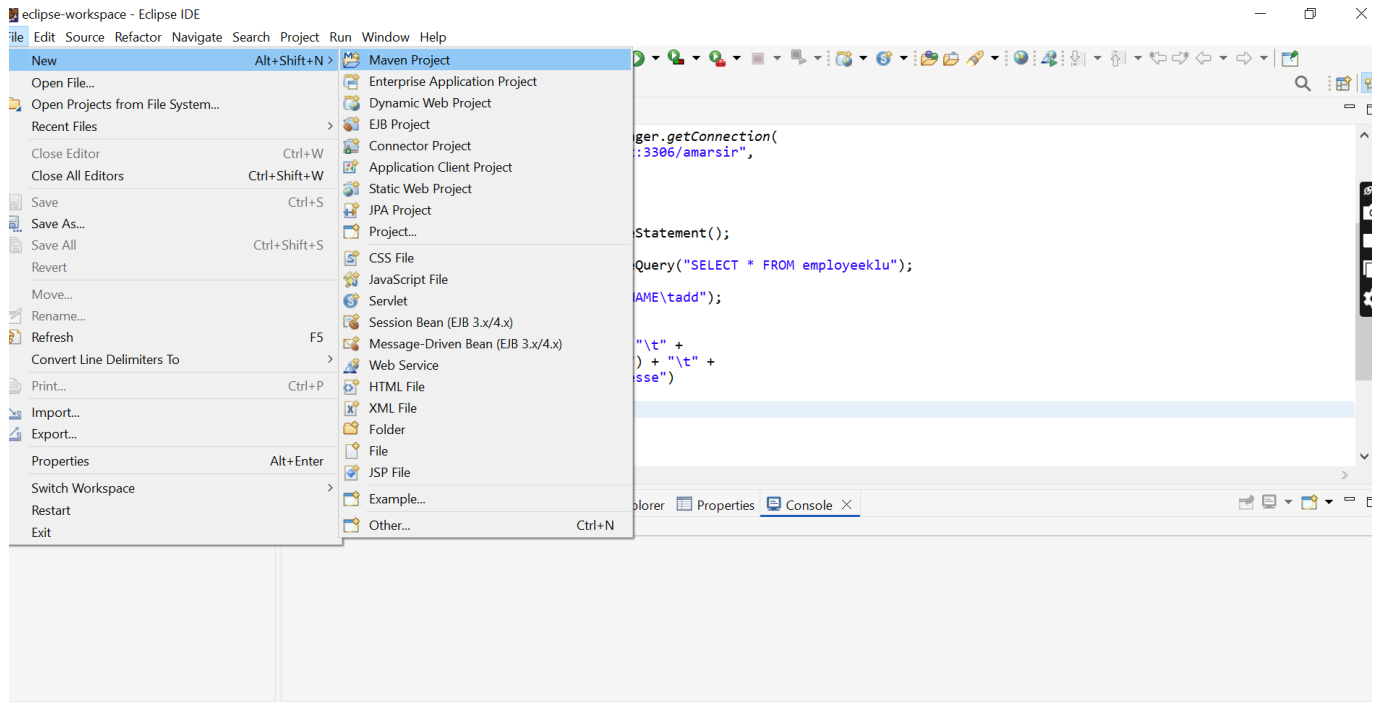
```
ResultSet rs = stmt.executeQuery("SELECT * FROM Student");
```

### 5. Process ResultSet

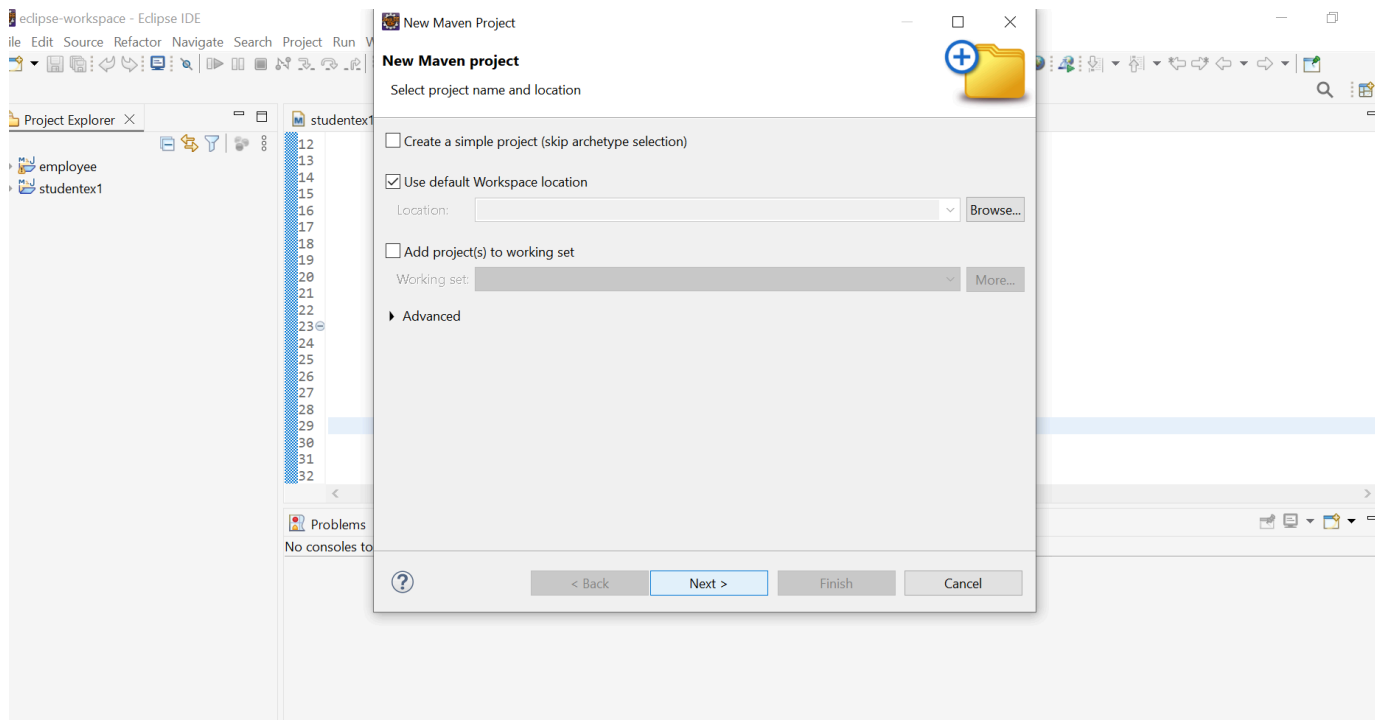
```
System.out.println ("SNO\tSNAME\tSMARKS");
while (rs.next()) {
    System.out.println(
        rs.getInt("sno") + "\t" +
        rs.getString("sname") + "\t" +
        rs.getInt("smarks")
    );
}
```

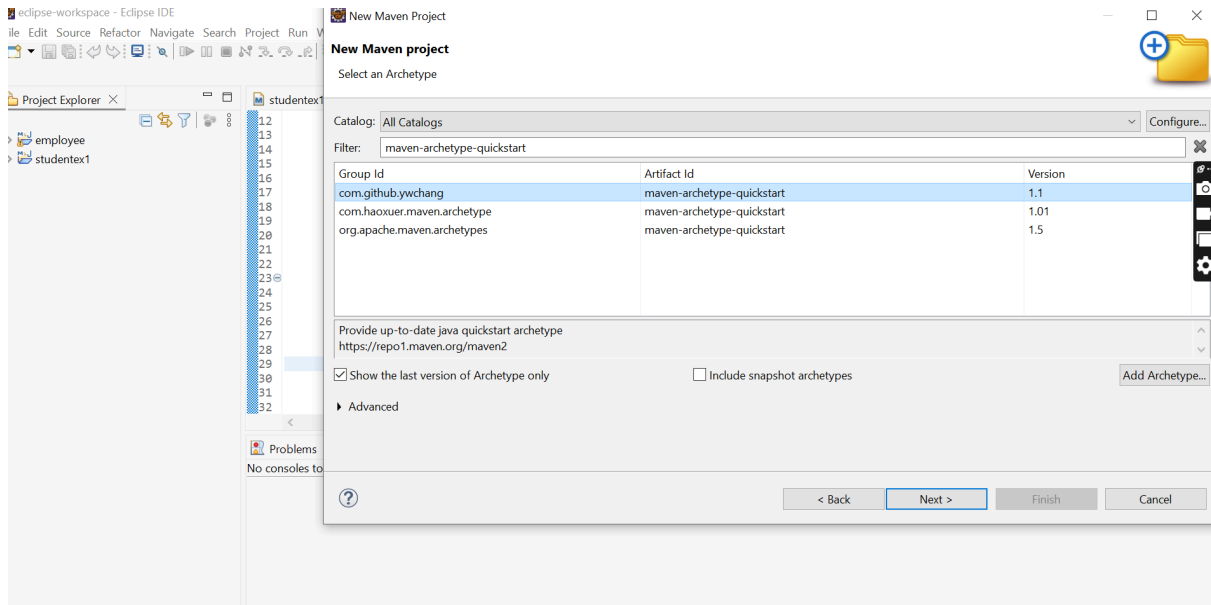
### 6. Close Connection

```
con.close();
```

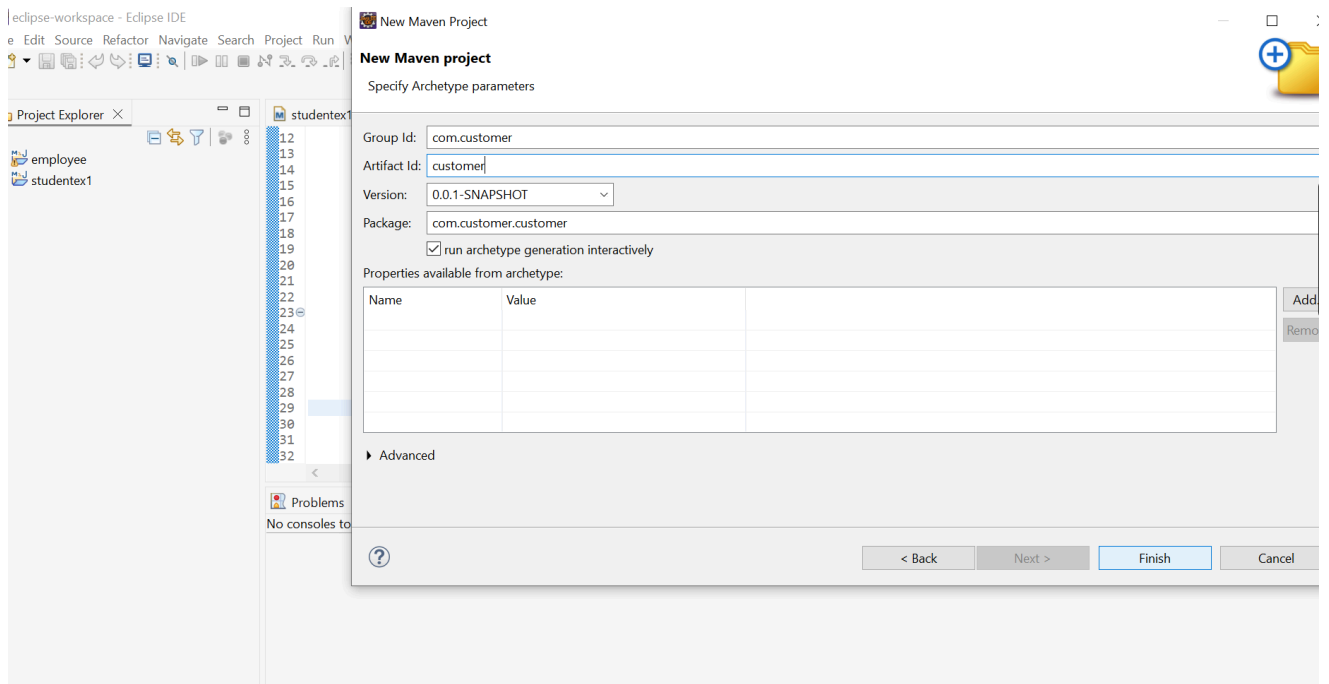


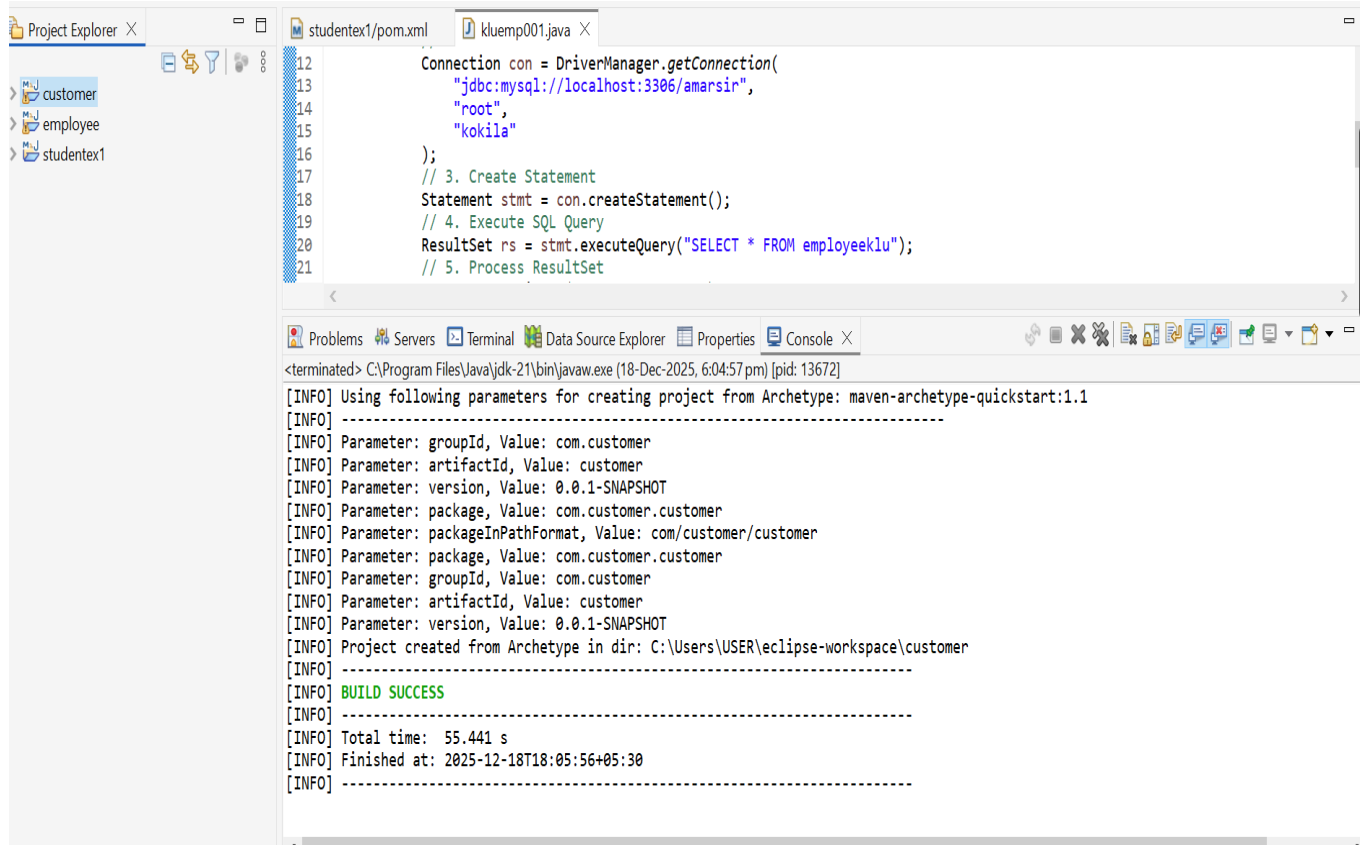
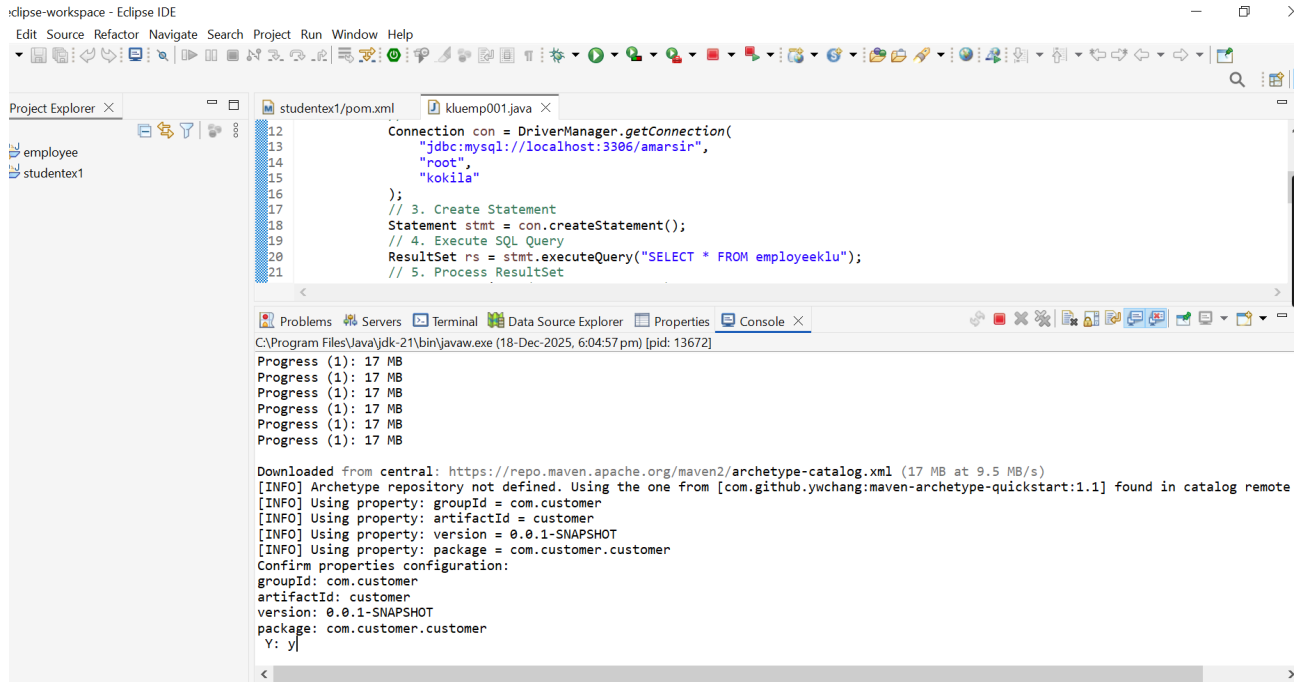
Click the **file>New>Maven Project> Next>Finish**

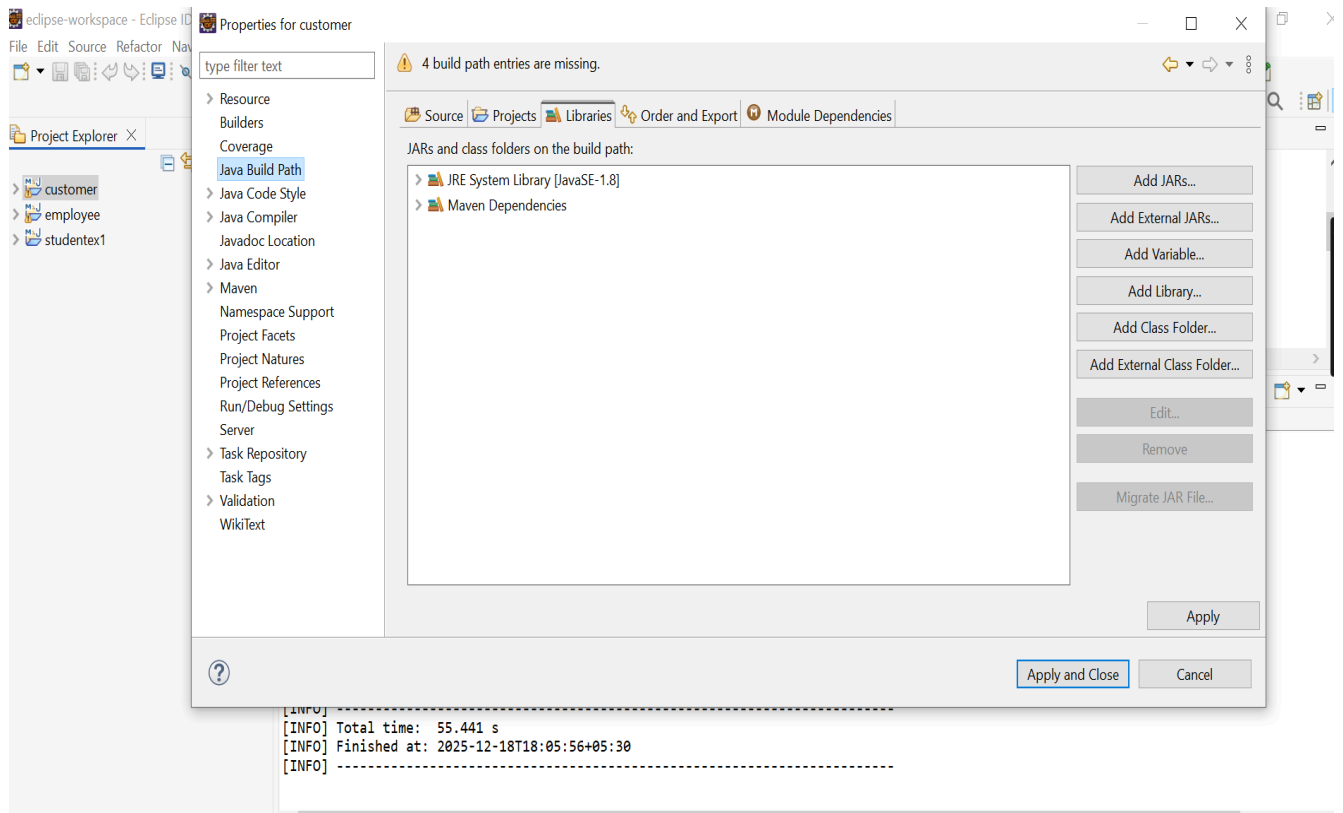
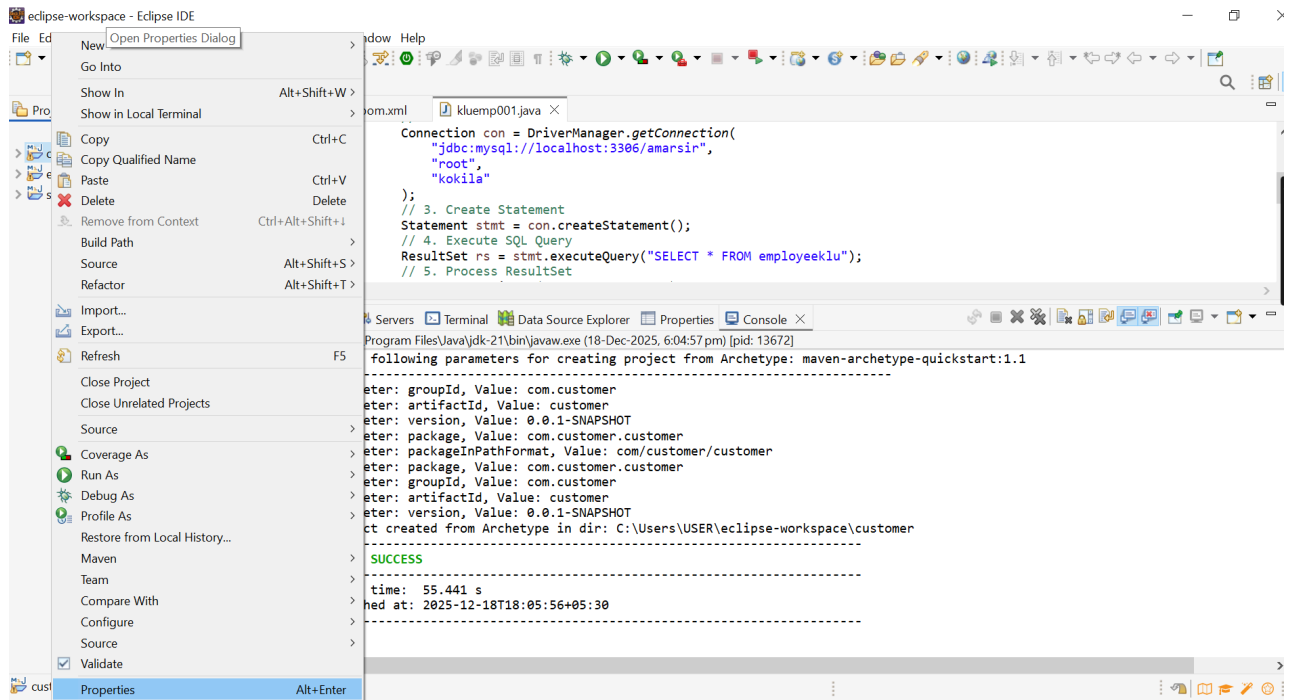


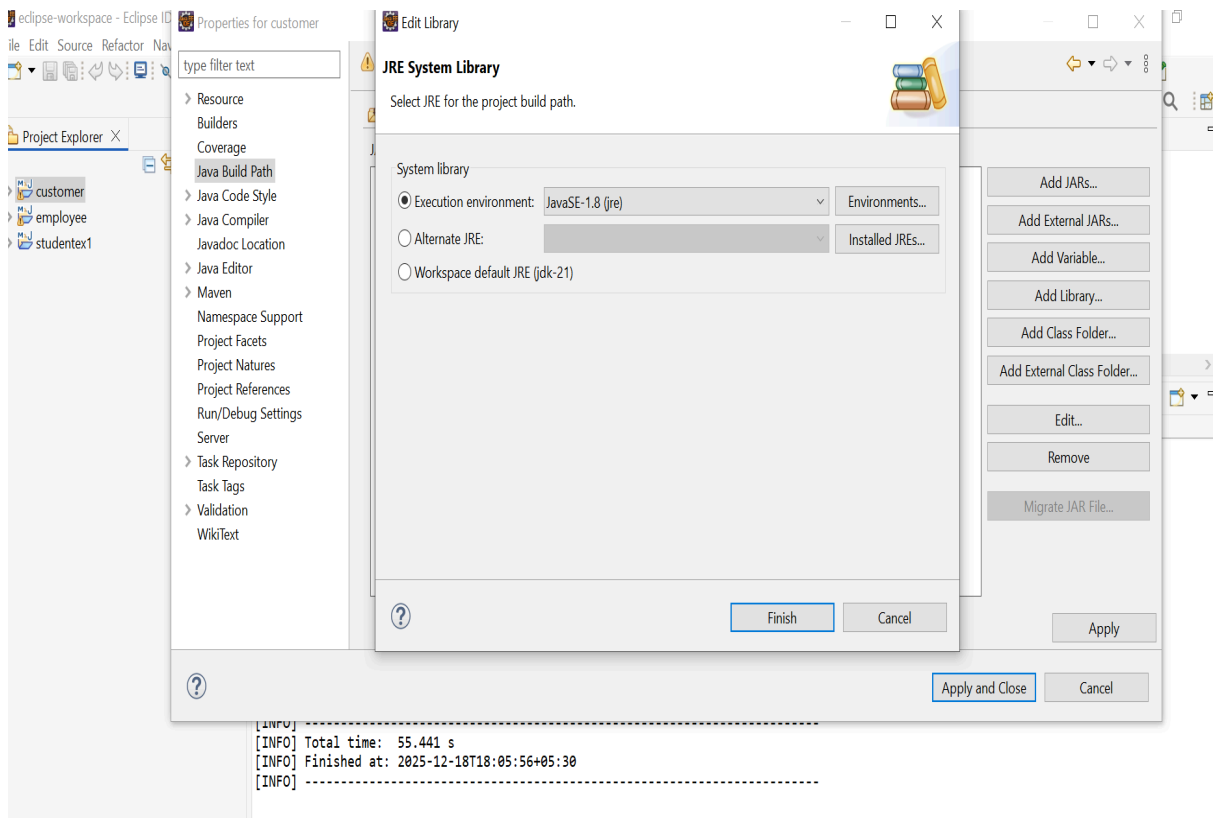
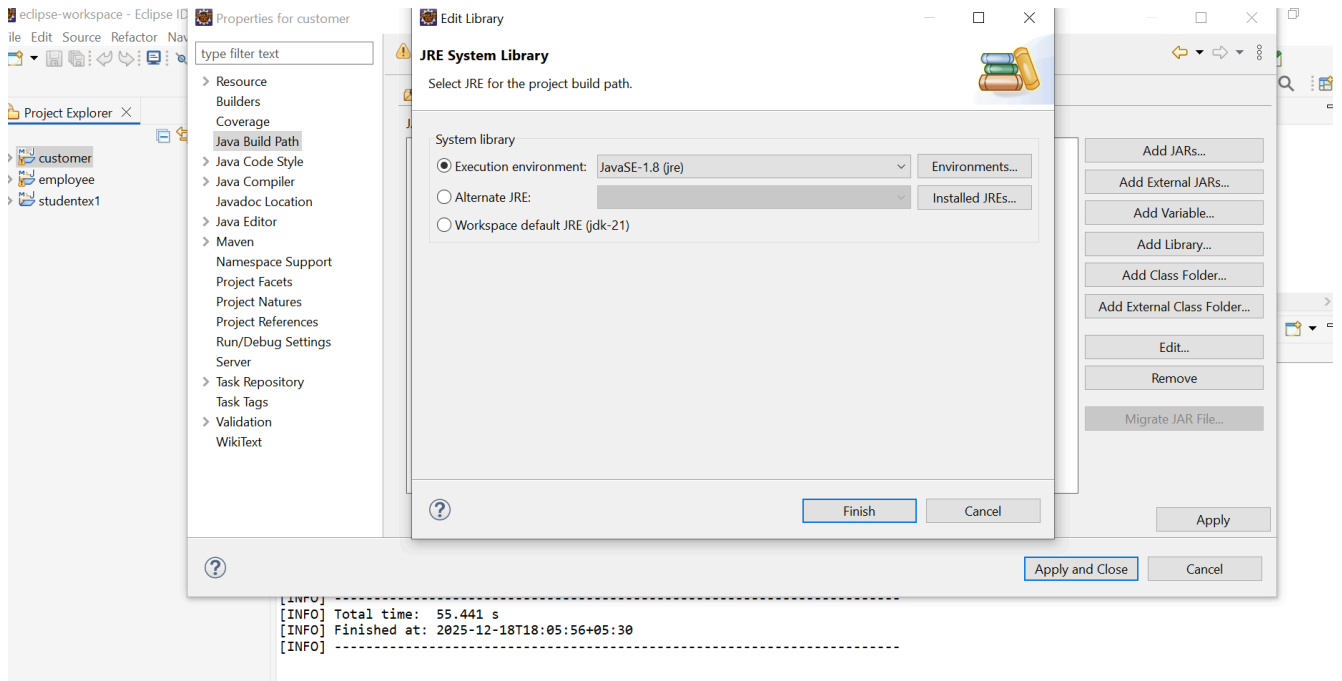


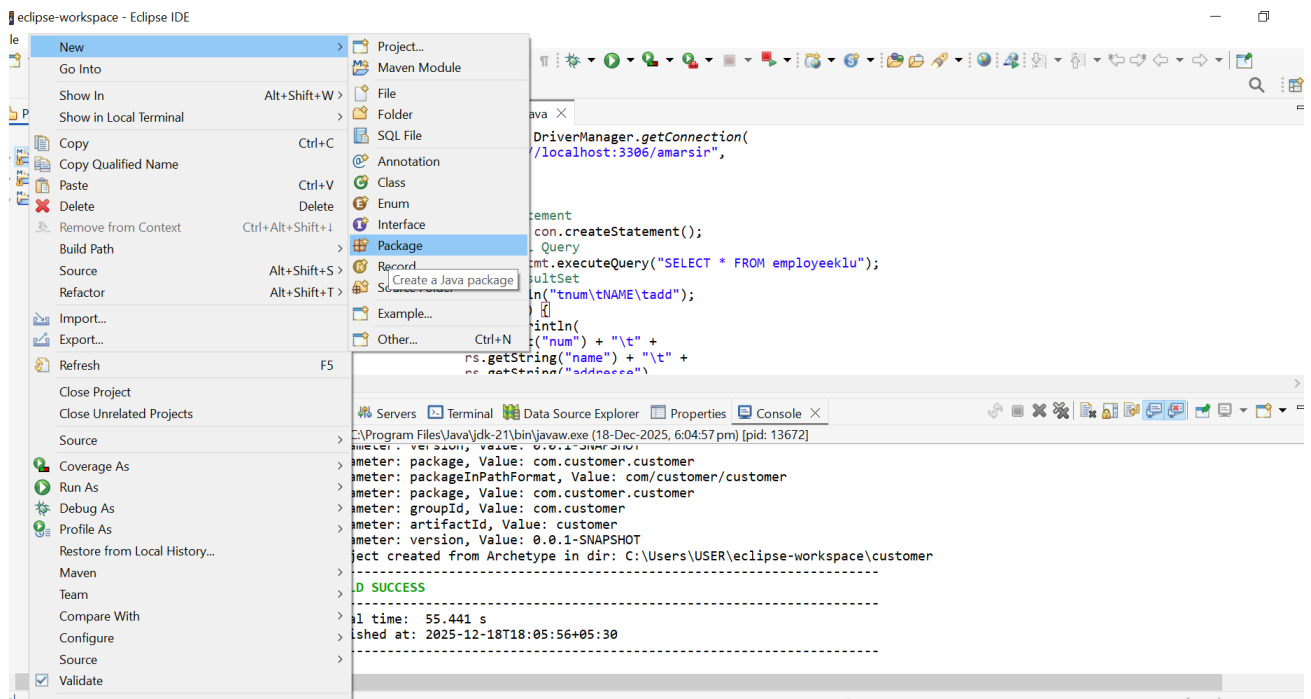
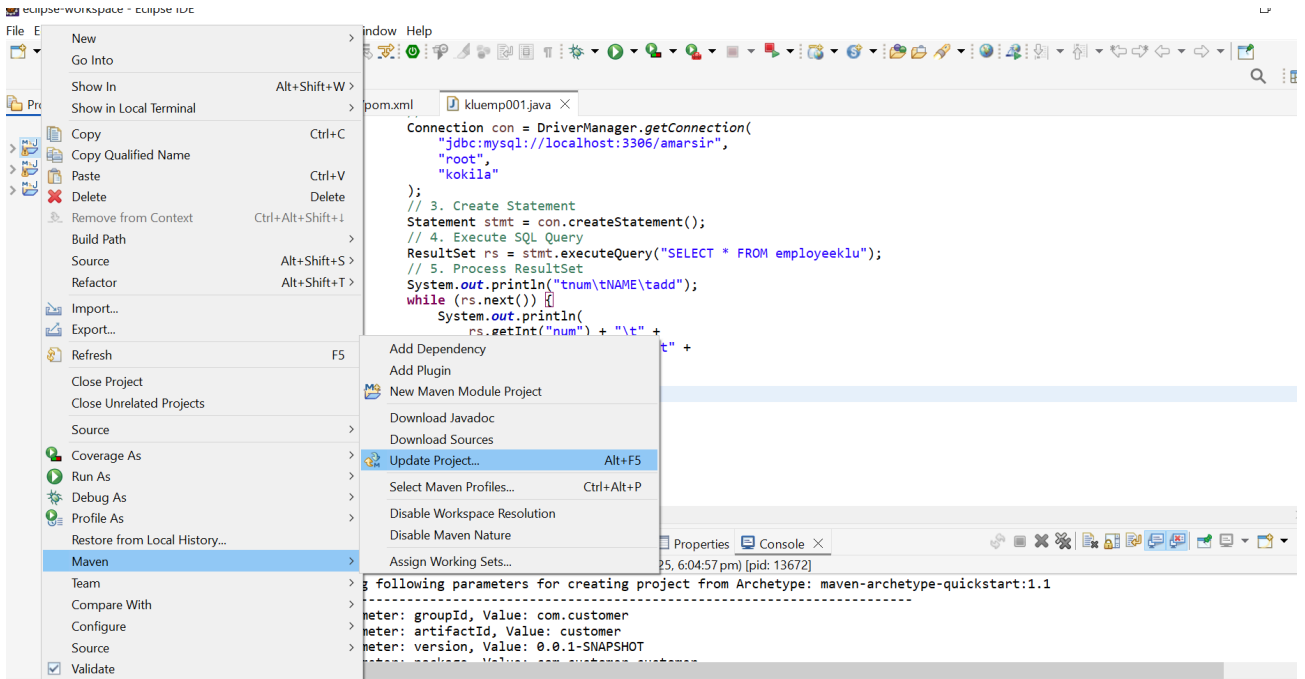
Enter the **Group id and artefact id**











eclipse-workspace - Eclipse IDE

File Edit Source Refactor Navigate Search Project Run Window Help

Project Explorer

- customer
- employee
- studentex1

studentex1

12  
13  
14  
15  
16  
17  
18  
19  
20  
21  
22  
23  
24  
25  
26  
27

Problems

```
<terminated> C
[INFO] Para
[INFO] Para
[INFO] Para
[INFO] Para
[INFO] Para
[INFO] Parameter: artifactId, Value: customer
[INFO] Parameter: version, Value: 0.0.1-SNAPSHOT
[INFO] Project created from Archetype in dir: C:\Users\USER\eclipse-workspace\customer
[INFO] -----
[INFO] BUILD SUCCESS
[INFO] -----
[INFO] Total time: 55.441 s
[INFO] Finished at: 2025-12-18T18:05:56+05:30
[INFO] -----
```

New Java Package

Java Package

Create a new Java package.

Creates folders corresponding to packages.

Source folder: customer/src/main/java Browse...

Name: customerklu

Create package-info.java

Generate comments (configure templates and default value [here](#))

Finish Cancel