



COMMUNITY CONNECTION NEWSLETTER

MILFORD'S COMMUNITY CONNECTION CENTER

IN COLLABORATION WITH: MILFORD'S FAMILY RESOURCE CENTER

OFFICES LOCATED AT: PUMPKIN DELIGHT & CALF PEN MEADOW SCHOOLS

24 ART STREET & 395 WELCHS POINT ROAD, MILFORD, CONNECTICUT 06460

SERVING: MILFORD'S PUBLIC SCHOOLS

[CCC Website](#)
[FRC Website](#)

[Mrs. Williams](#), Coordinator
[Mrs. Gaffney](#), Program Manager

203-882-6094
203-783-3627

February 17, 2022
MFRC Staff 203-783-3626

Milford Community School Readiness RFP public notice click [here](#)
Milford School Readiness Quality Enhancement Grant Legal Notice 2022 [here](#)



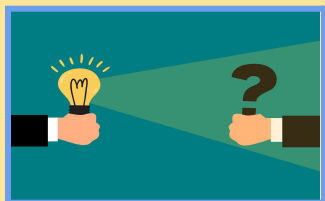
February's Special Days!

Here is a [link](#) for the Old Farmer's Almanac article.

National Children's Dental Health Month this February. Click [here](#)

Brush Up on Oral Health Tips for Children's Dental Health Month click [here](#)

February 21st brings [Presidents' Day](#), a federal holiday also known as Washington's Birthday that is celebrated on the third Monday in February. (George Washington's actual birthday is February 22nd!)



DO NOT LET YOUR LIGHTS AND HEAT BE TURNED OFF!

Protection from utility shut-off ended September 15, 2021. Hardship or Winter Protection coding protects your service until May 1, 2022. Call your electric or gas company to see if you are eligible.

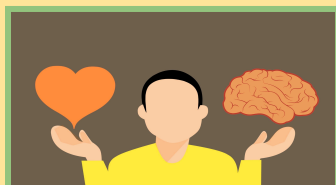
[UniteCT](#) (www.bit.ly/UniteCT): Money toward back rent, and light bill. No shut off while they work on your application.
UI: (800)722-5584 Eversource: (860) 286-2000

[Energy Assistance](#): Money toward back heat bill. Call your utility company or local community action agency.
Ct Natural Gas (860) 524-8361 Southern CT Gas (800) 659-8200

[Operation Fuel](#): (860) 243-2345 Emergency funds for some energy bills. Call to see if they can help

[CT Public Utilities Regulatory Authority](#): (800) 382-4586 Ask for help getting an affordable payment plan.

Need Help? Call Bonnie Roswig, Center for [Children's Advocacy](#)
(860) 545-8581 / broswig@cca-ct.



office of Early Childhood (OEC)

The [OES](#) website provides parents & caregivers with many resources.

[Little Wonders](#) provides information about a child's growth from Birth to 5.

If you have questions about your child's development click [here](#)

[Home visiting](#) programs improve the health of young children by providing support and services for them and their families — right your own home.

[Get Parenting Support](#) from birth to 5, 211 for [older children](#)



February

["America's Greatest Farmer"](#)

"The greatness of a community is most accurately measured by the compassionate actions of its members."

~Coretta Scott King~

