

# 2024 KSU Regional Event Explanations & Modifications



The following information was from the 2024 Regional Tournament and is for refere

Coach & Team - Please visit regularly for updates  
Revised: 2/3/2024

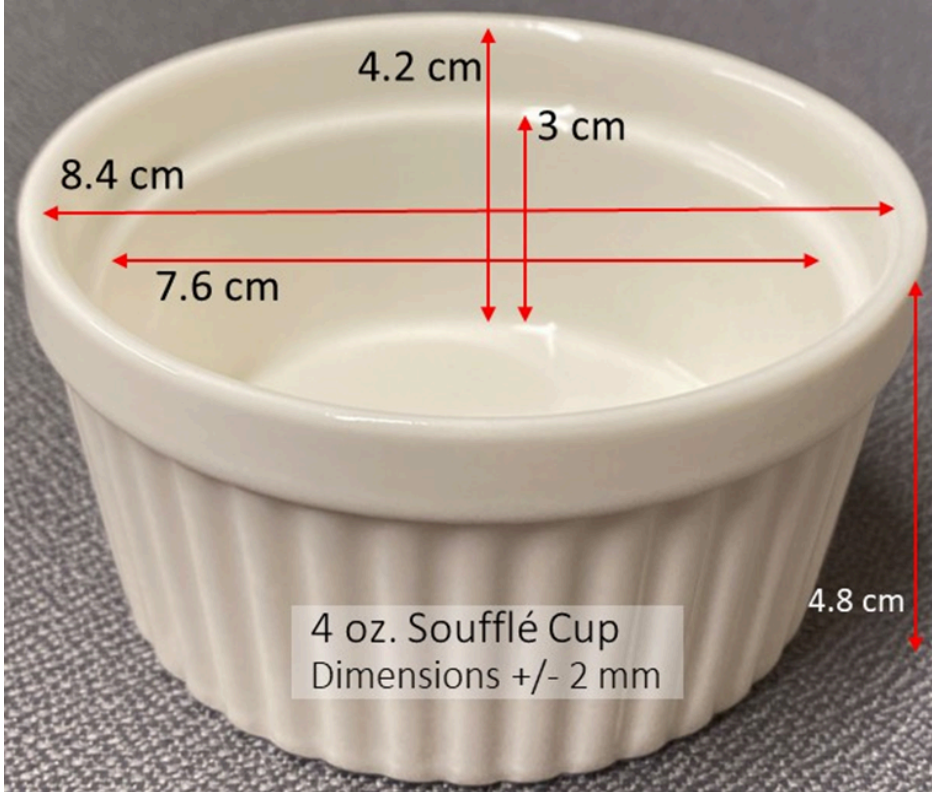
## General

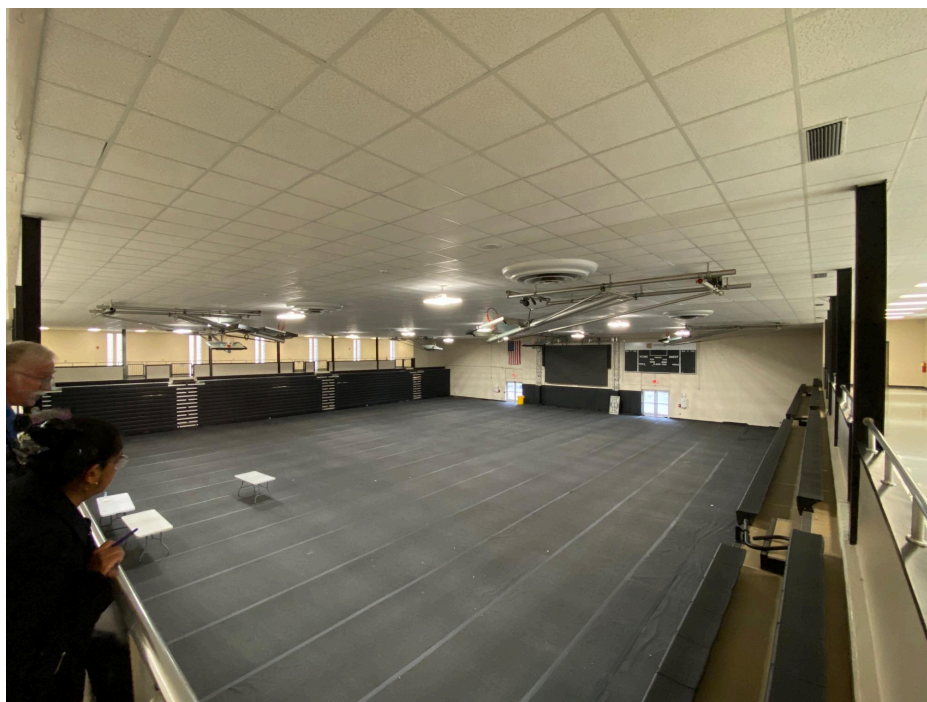
All 23 Events will be run at the tournament
National Rules Clarifications for test events as of December 15, 2023
National Rules Clarifications for Building Events as of January 24, 2024
What to do if event related issues during tournament: . <ul style="list-style-type: none"><li>• Only competitors are permitted to speak with event supervisors. If students have questions or concerns about an event, they should first speak with the event supervisor.</li><li>• If the competitor still has questions or concerns, they should bring it back to their head coach.</li><li>• If the coach views this concern as valid, they may come to Tournament Headquarters</li></ul>

<p>to discuss this with the tournament director. The tournament director will further investigate and provide a response to the coach.</p> <ul style="list-style-type: none"> <li>• There will be an impartial adjudication committee to support the Tournament Director to resolve issues.</li> <li>• Coaches are not permitted to speak with event supervisors. Parents are not permitted to speak to event supervisors or the tournament director. Those who violate this policy put their team at risk of disqualification for that event. Repeated violations may cause a team to be disqualified from the tournament.</li> </ul>
Regional level rules will be followed unless specified below under “Event Specific”
All binder materials must remain in the binder at all times for station events unless specifically allowed in the rules.

## Event Specific

Event	
Detector Building	Souffle Cup Dimensions for testing

	 <p>4 oz. Soufflé Cup Dimensions +/- 2 mm</p>
Flight	<p>Gym Size - Height - 22 ft to top of ceiling; 21 ft to the light standards note there are obstacles below that including basketball hoops, air vents, etc. L X W - 110 ft x 103 ft</p> <p>Gym view from upper level. Basketball hoops will be up and bleachers will be away. Audience will be on the upper level. Competitors only on the gym floor.</p>



## Forestry

Information for students from the Event Supervisor:

- The forestry event will require identification of trees by their genus and species names. However, to save teams time with writing name, teams will be provided with the national SO list on which all the trees will be numbered in order. Example: 1—Ginkgo bilobia; 2—Taxus brevifolia; 3 -Abies balsamea, continuing down the first column, then down the second column starting with Populous grandidentata. Then on to second page continuing numbers. Teams will have the option of identifying a sample by the number on this list OR by writing genus and species. Writing both number and genus/species will NOT be expected; the answer sheet will have spaces for both, but only one needs to be completed. If a team writes genus and species, each part of the answer will receive half credit. So if genus is correct and species is wrong, a team would still receive half a point.
- Students may be expected to make measurements and/or to perform calculations as part of the stations. *Stations requiring these will include rulers and/ or calculators as appropriate.* Students should bring nothing but the allowed 2" notebook, one field guide, and one loose copy of the national list plus writing tool. Measurements may be expected in either SI or conventional US measurements as specified in the questions. Calculations assume students can perform high school algebra

	and are familiar with ratios and proportions.
Robot Tour	Robot Tour will be held as an open audience event. Teams from each school may be signed up in different time slots like other builds. (1/15/24)

[Return to KSU Regional Tournament Home Page](#)