

## Lab 25 Chromatogram of metal ions

Figure 1: Chromatogram spotted with four metal ions, a mixture of all ions and Unknowns A, B and C

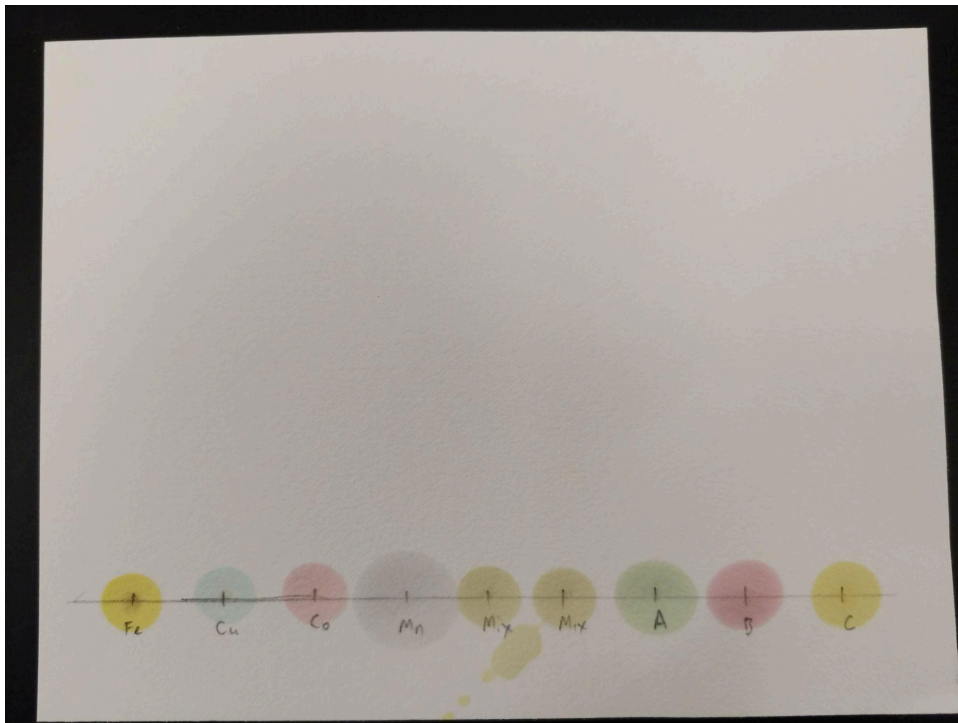


Figure 2: Developing chromatogram

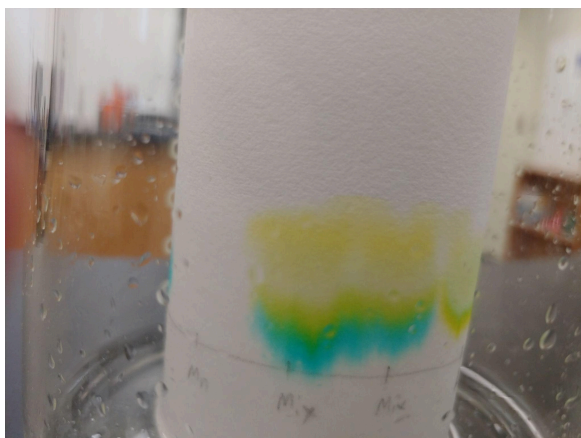
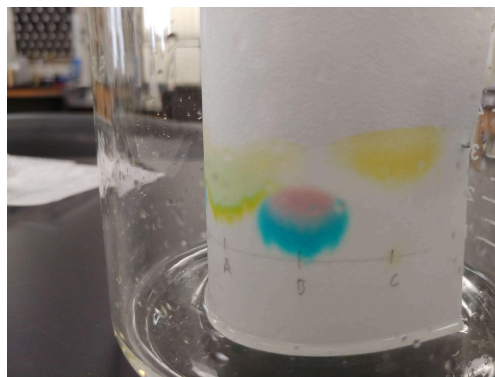
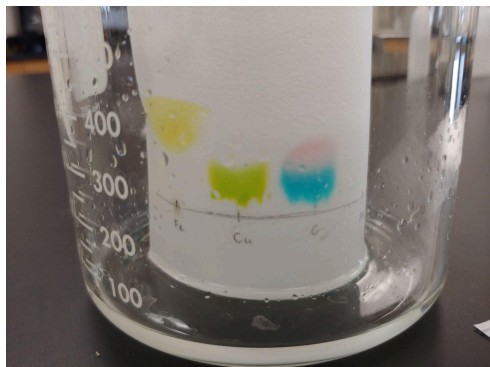


Figure 3: Chromatogram still wet after the solvent has moved most of the way up the paper. Note the solvent front is marked at the top of the paper.

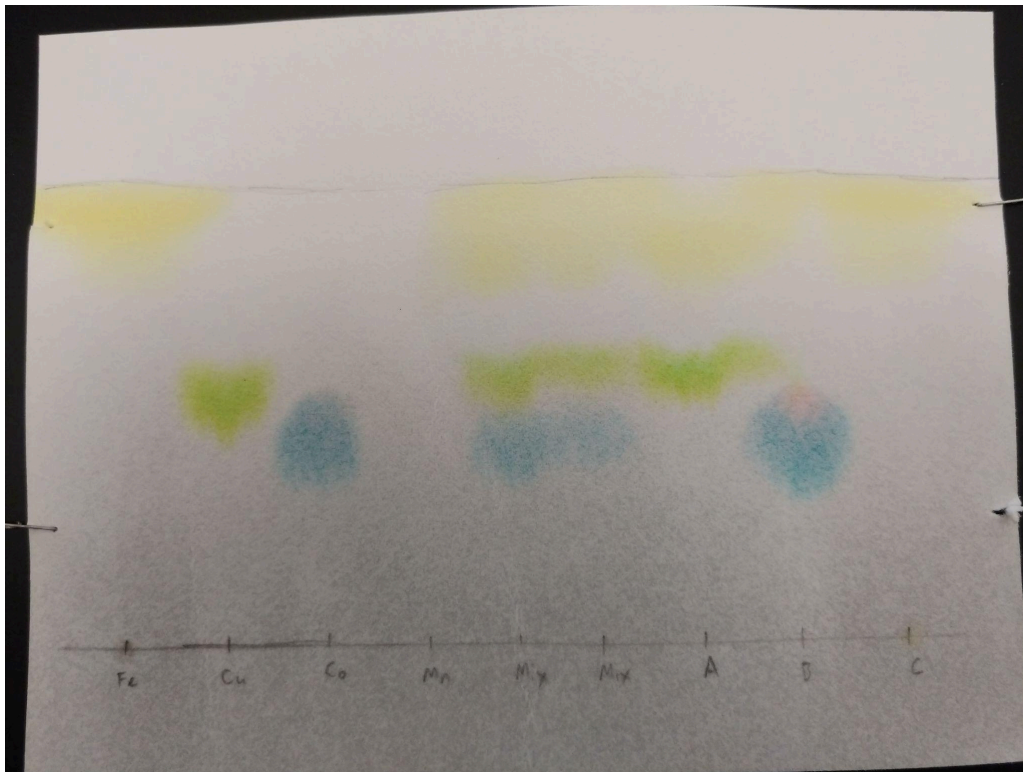


Figure 4: After the solvent has evaporated and the chromatography paper is dry

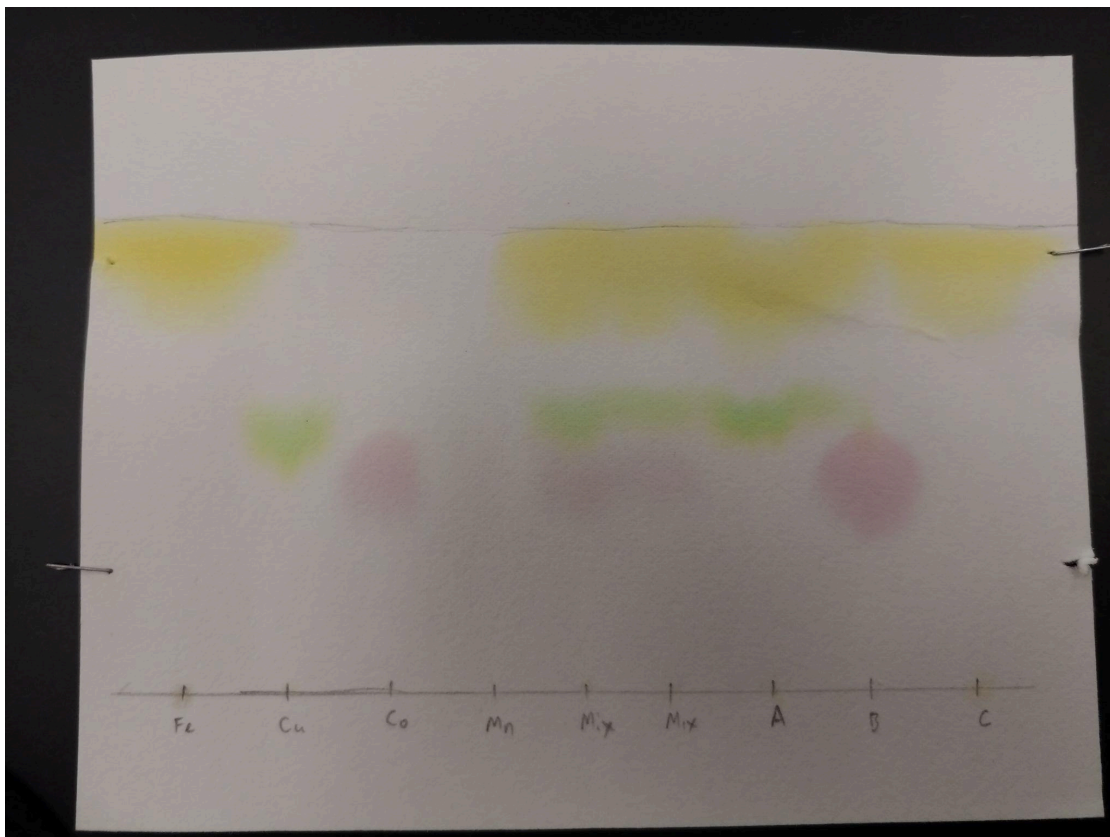


Figure 5: After drying with a heat gun

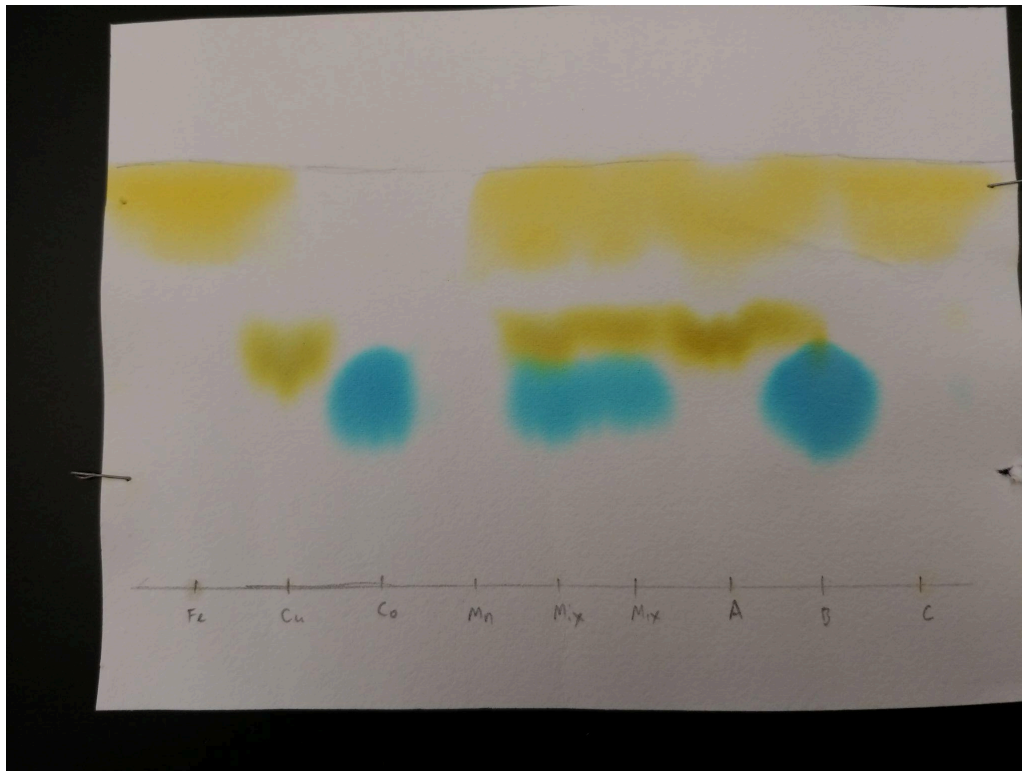


Figure 6: After exposure to ammonia gas

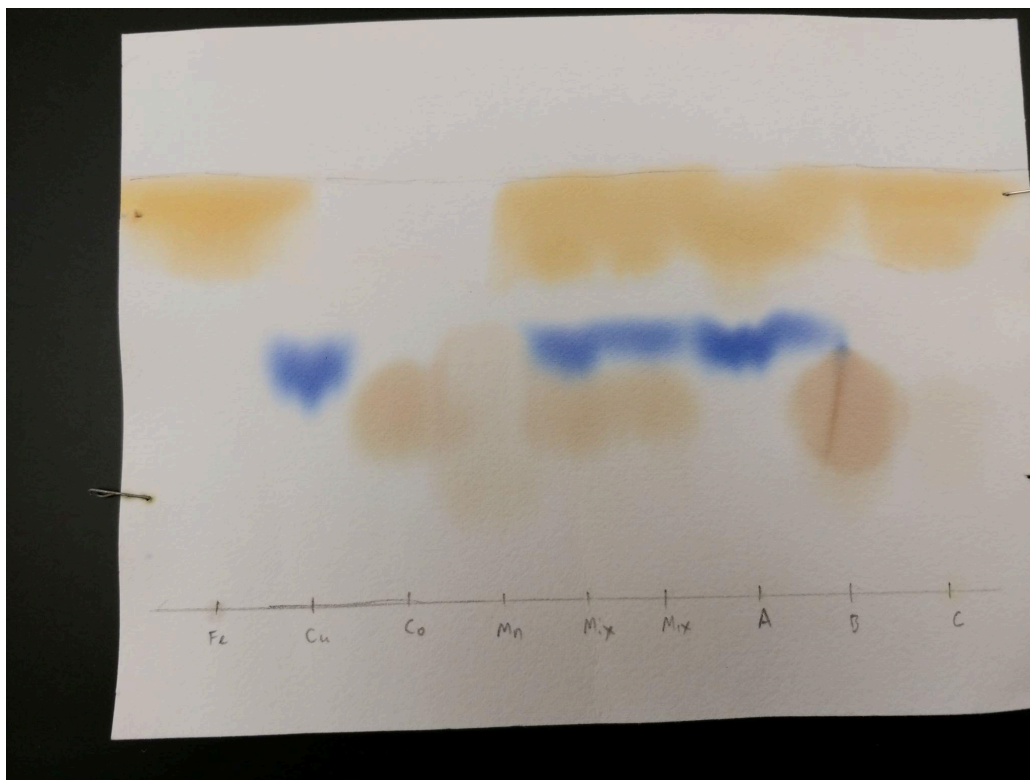


Figure 7: about 30 minutes after exposure to ammonia. Spots circled.

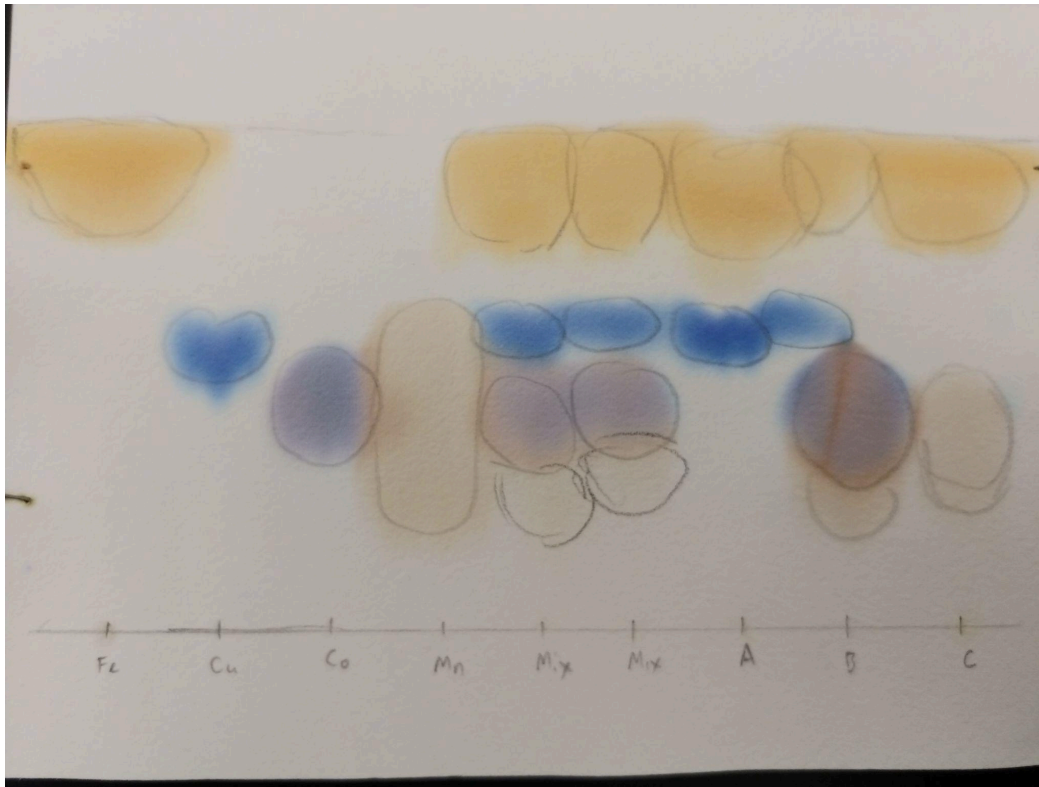


Figure 8: 3 days after exposure to ammonia

