 <b>GRADES 1 to 12</b> <b>DAILY LESSON LOG</b>	<b>School:</b>		<b>Grade Level:</b>	<b>III</b>
	<b>Teacher:</b>	<b>File Created by DepEd Click</b>	<b>Learning Area:</b>	<b>SCIENCE</b>
	<b>Teaching Dates and Time:</b>	<b>NOVEMBER 28 – DECEMBER 2, 2022 (WEEK 4)</b>	<b>Quarter:</b>	<b>2<sup>ND</sup> QUARTER</b>

	MONDAY	TUESDAY	WEDNESDAY	THURSDAY	FRIDAY
--	--------	---------	-----------	----------	--------

<b>I. OBJECTIVES</b>					
<b>A. Content Standard</b>	Demonstrate understanding of external parts of plants and their functions, and importance to humans	Demonstrate understanding of external parts of plants and their functions, and importance to humans	Demonstrate understanding of external parts of plants and their functions, and importance to humans	Demonstrate understanding of external parts of plants and their functions, and importance to humans	
<b>B. Performance Standard</b>	The learners should be able to demonstrate the proper ways of handling plants.				
<b>C. Learning Competency/Objectives</b> Write the LC code for each.	Describe the parts of different kinds of plants.				
<b>II. CONTENT</b>					
	Parts of a Plant	Parts of a Plant	Parts of a Plant	Parts of a Plant	
<b>III. LEARNING RESOURCES</b>					
<b>D. References</b>					
1. Teacher’s Guide pages					
2. Learner’s Materials pages					
3. Textbook pages					
4. Additional Materials from Learning Resource (LR)portal					
<b>E. Other Learning Resource</b>					
<b>IV. PROCEDURES</b>					
	<b>WHAT I KNOW</b>  Direction: Read and understand the questions. Write the correct letter in your notebook. 1. Which part of the plant grows downward into the ground? A. flowers B. leaves C. stems D. roots 2. What part of the plant keeps it in upright position? A. flowers B. leaves C. stems D. roots	<b>WHAT IS IT</b>  Parts of a Plant and Its Function	<b>WHAT I HAVE LEARNED</b>  Write <b>TRUE</b> if the statement about the function is correct and write <b>FALSE</b> if it is not. Write your answer on the blank.  _____1. Root is the product of fertilization in a plant. _____2. Leaves make food for the plants through photosynthesis.	<b>ASSESSMENT</b>  Direction: Draw a line that connects from parts to its function.	<b>ADDITIONAL ACTIVITIES</b>  <b>Check me!</b> Direction: Answer the table below by putting a check in each column if the listed plant has the corresponding part.

3. What is the reproductive organ of most plants and considered the most attractive and colorful part?  
A. flowers B. leaves C. stems D. roots

4. What is the ripened ovary of a flower?  
A. flowers B. fruits C. leaves D. trunk

5. What part of the plant contains the chlorophyll, a pigment used in making food?  
A. flowers B. fruits C. leaves D. trunk

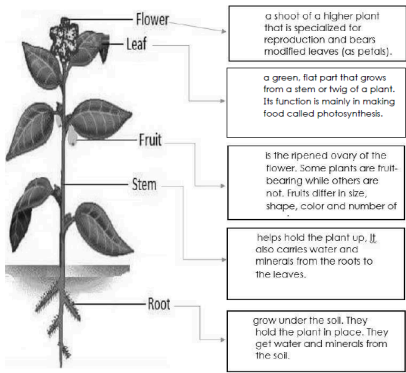
WHAT’S IN

Plants are living things. There are many different kinds of plants around us but before knowing them, we must learn first what the parts of the different kinds of plants are.

The part of the different kinds of plants are roots, stem, leaves, flower, and fruits. The root is the plant part that grows downward into the ground, but it can also be found below the ground, or both. The stem holds the plant up. The leaf is the plant part that grows from the stem. From flower it will develop into a fruit. The fruit is the product of fertilization of a plant.

WHAT’S NEW

Direction: Read this short story and answer the given question.



WHAT’S MORE

Activity 1.1 Finding Words  
I. Direction: Find the words from the box in the puzzle and encircle them.

plants	fruit	stem
leaf	root	flower

f	r	u	i	t	h	j	k
l	p	l	a	n	t	s	z
o	j	e	r	u	i	t	x
w	w	a	d	g	f	e	c
e	k	f	r	u	i	m	v
r	o	o	t	q	r	b	b
o	z	l	t	o	o	r	n
t	i	o	p	a	s	d	m

Activity 1. 2 Label the parts.  
Direction: Identify the parts of the plant.Choose your answer from the box below and write it in the box provided.

3. Stem is the part of the plant that helps hold the plant up and also carries water and minerals.

4. The roots of plants get water and minerals from the soil.

5. Fruit is the ripened ovary of the flower.

WHAT I CAN DO

A. Direction: Know the picture and unscramble the letters to form the correct words. Write each letter of your answer in the box provided.

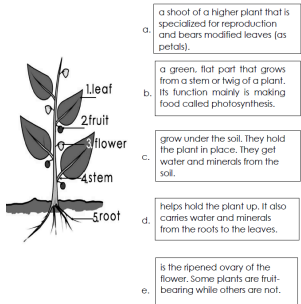
1. mets

2. orots

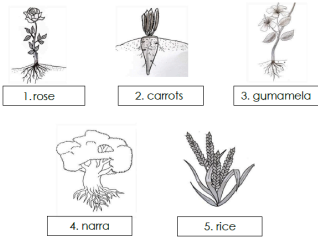
3. werflo

4. tiurf

5. lefa



Name of Plant	root	Stem	leaf	flower	Fruit
Example: Mayana	✓	✓	✓		
1. rose					
2. carrot					
3. gumamela					
4. narra					
5. rice					



Activity 1.2  
Direction: Underline the correct answer that corresponds to its function. Choose your answer inside the parenthesis.

Write your answer in the box provided.



A Short Story About Plants

Long time ago, a farmer took a big bag of seeds to sell at the market. Suddenly, his cart's wheel hit a big stone. Bump! One of the seeds fell out of the bag and into the hot, dry ground. 'I'm scared!' said the seed. 'I need to be safe under the soil.' Just then, a buffalo walked on the seed and pushed it into the ground. 'I'm thirsty!' said the seed. 'I need some water to help me grow.' Just then, it started to rain. The next morning the seed had a little green shoot.

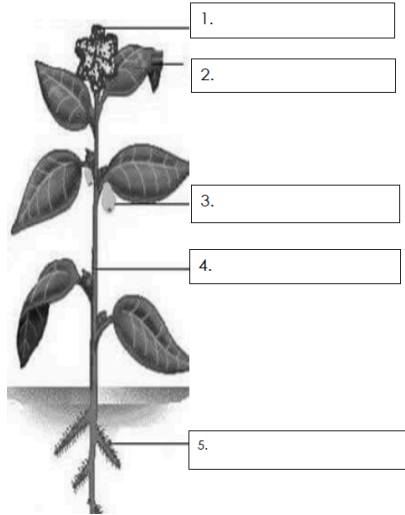
All day, it sat in the sun and grew taller and taller. The next day it had its first leaf. This helped it to catch sunlight and grow. That evening, a hungry bird tried to eat it, but the seed had roots to help it stay in the ground. Many years of sunshine and rain passed. The seed became a plant and then the plant became a tree. Today, if you visit the countryside you can see the tree. It is big and strong and now makes seeds of its own.

Write in the box the parts of the plant mentioned in the story.

1

2






3



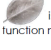
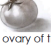



root   stem   fruit   leaf   flower

Activity 1.3 Match the part to its function.

Direction: Match column A to Column B by connecting lines to your correct answer.

Column A	Column B
1. 	a. grows under the soil. They hold the plant in place. They get water and minerals from the soil.
2. 	b. helps hold the plant up, it also carries water and minerals from the roots to the leaves.
3. 	c. a shoot of a higher plant that is specialized for reproduction and bears modified leaves (as petals).
4. 	d. a green, flat parts that grows from a stem or twig of a plant. It's function mainly in making food called photosynthesis.
5. 	e. is the ripened ovary of the flower. Some plants are fruit-bearing while others are not. Fruits differ in size, shape, color and number of seeds.

1. The *(stem, root, leaf)*  is the plant part that grows downward into the ground, but it can also be found below the ground, or both. They hold the plant in place. They get water and minerals from the soil.
2. The *(root, leaf, stem)*  holds the plant up. It also carries water and minerals from the roots to the leaves.
3. The *(fruit, leaf, flower)*  is a green flat part that grows from the stem or twig. It's function mainly in making food called photosynthesis.
4. The *(fruit, leaf, root)*  is the product of fertilization of a plant. It is the ripened ovary of the flower. Some plants are fruit-bearing while others are not. Fruits differ in size, shape, color and number.
5. The *(leaf, fruit, flower)*  is a shoot of a higher plant that is specialized for reproduction and bears modified leaves (as petals).

V.	REMARKS	
VI.	REFLECTION	

A. No. of learners who earned 80% in the evaluation	
B. No. of learners who require additional activities for remediation who scored below 80%	
C. Did the remedial lessons work? No. of learners who have caught up with the lesson	
D. No. of learners who continue to require remediation	
E. Which of my teaching strategies worked well? Why did these work?	
F. What difficulties did I encounter which my principal or supervisor can help me solve?	
G. What innovation or localized materials did I use/discover which I wish to share with other teachers?	