

# EM J-Rock Week 1 3D Design

Jump to:

[Day 1 Navigation Race & Followup Questions](#)

[Day 5 Reflections](#)

## Day 1 Navigation Race & Followup Questions

Part 1: [Read the instructions](#) for the Navigation Race

Part 2: Complete the navigation race, take screenshots of items when you find them, and [insert the screenshots into this worksheet](#).

Part 3: After completing the navigation race, [answer the followup questions](#).

## Navigation Race!

Find as many hidden characters within this scene as you can!



Follow all instructions below to complete the challenge and win the Navigation Race!

1. Log into [TinkerCAD](#).
2. Click on this file [[TinkerCAD Navigation Race](#)]. You'll be brought to the design's mainpage.
3. Click "Copy & Tinker" to open the file.


# EM J-Rock Week 1 3D Design

4. Use the basic navigation tools of **Zoom**, **Pan**, **Orbit** and **Focus** (select object and then press the F key) to find each item (refer to the list below).
5. To verify your findings, take a screenshot of each item as you find it
  - o Mac screenshot: Cmd + Shift + 4.
  - o Chromebook screenshot: [click here](#)
6. Insert each screenshot in the [verification table](#) below. The screenshot must be a direct view of the object you are trying to find. Pictures of things in the distance won't cut it!
7. After finding everything, [fill out the reflection below](#).

You are looking for:

- Nelson Mandela
- Rihanna
- Kanye
- A tiger
- A black cat
- Justin Beiber
- A muppet (the best muppet of all time, at that)
- The letters "3D"
- A killer whale
- Peter Penguin
- A jack-o-lantern
- Bill Nye
- The Flash Symbol
- Mystery Bonus Item!

**Navigation Race verification table** - check off each item as you find it by listing the name of the found object and inserting a screenshot of that object.

Justin beiber	Insert screenshot:	
---------------	--------------------	--

# EM J-Rock Week 1 3D Design

Name of item found:

lion



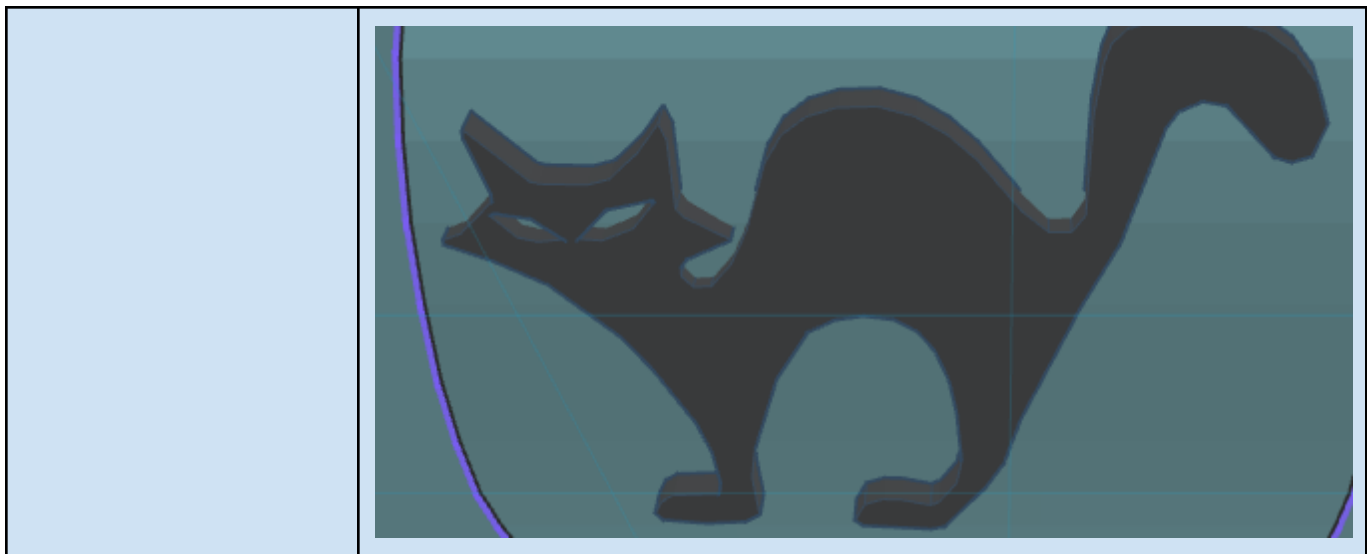
Insert screenshot:

Name of item found:

cat

Insert screenshot:

# EM J-Rock Week 1 3D Design



Name of item found:

pumpkin

Insert screenshot:



Name of item found:

muppet

Insert screenshot:

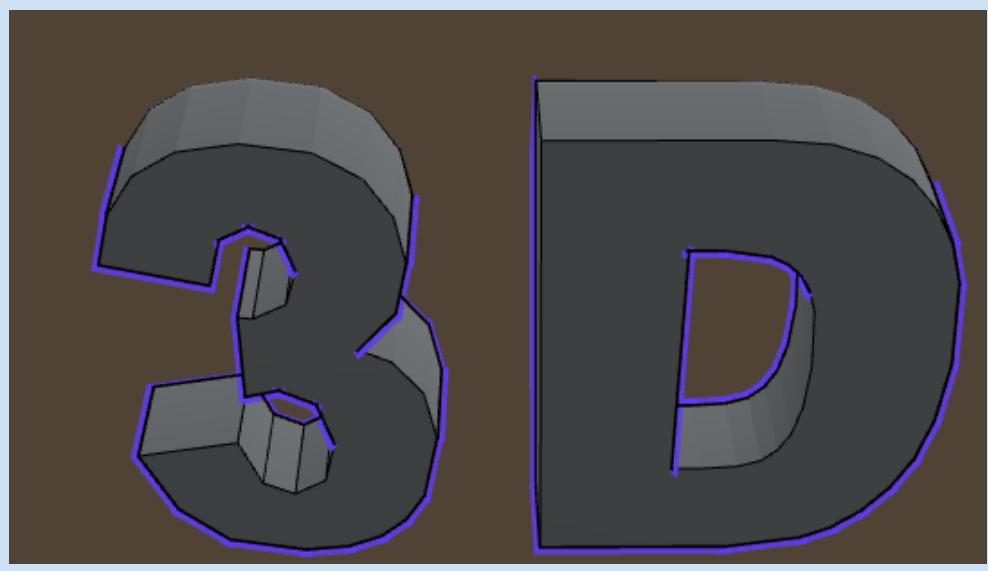


# EM J-Rock Week 1 3D Design

Name of item found:

3d

Insert screenshot:



Name of item found:

rihanna

Insert screenshot:



# EM J-Rock Week 1 3D Design

Name of item found:

Killer whale



Insert screenshot:

Name of item found:

Bill nye

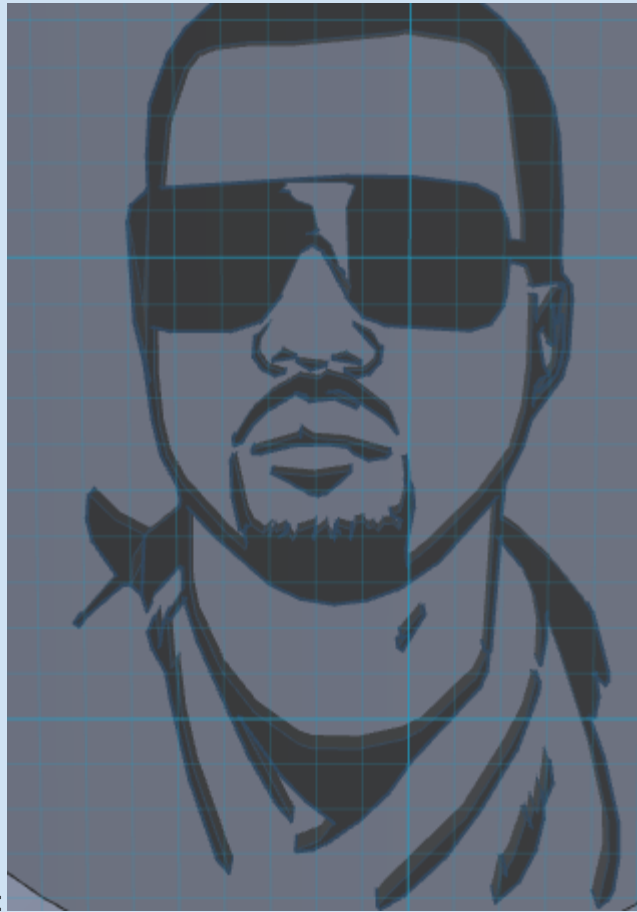
Insert screenshot:



# EM J-Rock Week 1 3D Design

Name of item found:

Jay z



Insert screenshot:

Name of item found:

peguin



Insert screenshot:

# EM J-Rock Week 1 3D Design

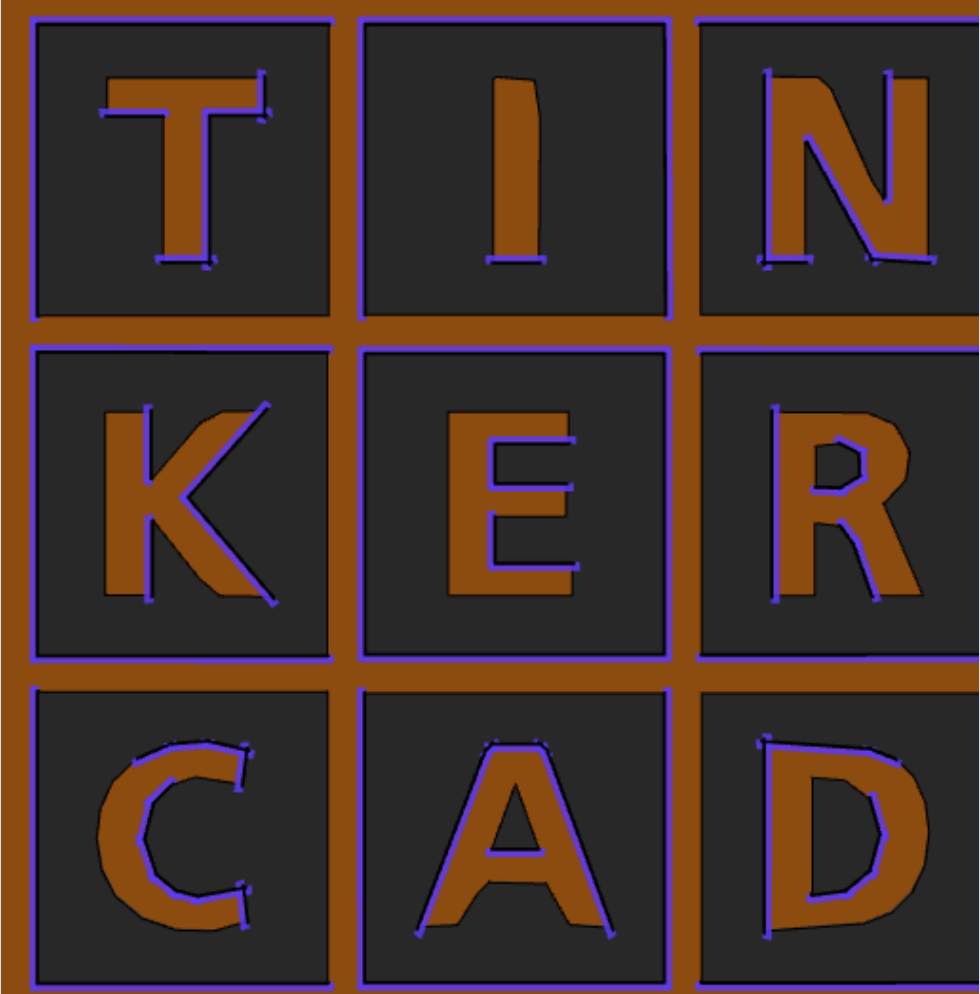
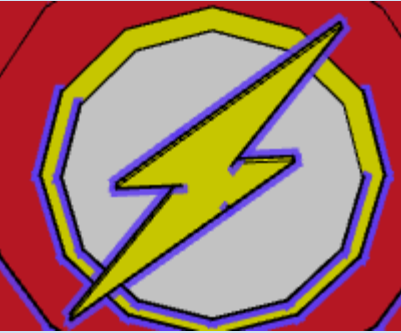
Name of item found:

Nelson mandela



Insert screenshot:

# EM J-Rock Week 1 3D Design

<p>Name of item found:</p> <input data-bbox="134 195 454 262" type="text" value="secret"/>	<p>Insert screenshot:</p>  A 3x3 grid of letters in a stylized, blocky font. The letters are arranged in three rows and three columns: Row 1: T, I, N; Row 2: K, E, R; Row 3: C, A, D. Each letter is brown with a blue outline and is set against a dark grey background within a brown-bordered cell.
<p>Name of item found:</p> <input data-bbox="134 1266 454 1333" type="text" value="Flash symbol"/>	<p>Insert screenshot:</p>  The Flash symbol, which consists of a yellow lightning bolt striking downwards, centered within a grey circle. The entire symbol is set against a red background.

## *Followup Questions*

# EM J-Rock Week 1 3D Design

1. Describe two ways to Zoom in TinkerCAD (one with the trackpad and one without).

Method 1: You can hold the mouse and zoom

Method 2: U can click the arrows or click the object and click the box and u can zoom

2. Describe two ways to Orbit in TinkerCAD (one with the trackpad and one without).

Method 1: u click the box and u zoom with the arrows

Method 2: u click the box or not just use the mouse and zoom and use the arrows on the upper left

3. How do you Pan in TinkerCAD? Is there more than one way?

I think u use the edit way i think so there is another one to use it

4. What is Focus and how does it work?

Focus is when you see a object and work with it without doing something else it works simply by just looking at something and working on it.

Reflection: Do you think being able to navigate effectively in a 3D modeling application is important? Why or why not? ***Be specific*** in your reasoning.

Yes why? because you can get a better look at it and it's more easier to draw it or make it.

# EM J-Rock Week 1 3D Design

## Day 5 Reflections

1. Add 1-2 screenshots of your object for Marcel. It's okay if you're not completely done, I just want to see how far you got today!	
2. What are 3 things you've learned this week with 3D printing and designing?	1. 2. 3.
3. What are 2 things you want to keep working on or get better at in TinkerCAD?	1. 2.
4. What is 1 thing you really liked from this week's Tech Major?	1.