

MAXI-JAZZ DANCE STUDIO

Uniform, Shoe & Hair Requirements for Showcase

As our students are getting super excited about our upcoming Mid-Year Showcase, we'd love to remind everyone of the appropriate MJDS uniform and shoes all our students should now be wearing to each and every lesson. This uniform and shoe list is also what will be required for students to wear at the Mid-Year Showcase.



HAIR

All students will need to have their hair neat, tidy and away from their face. Girls are to have their hair in a ponytail, bun or braids with hairspray if needed for flyaways. Students are more than welcome to wear a MJDS Bow or Scrunchie in their hair.

Boys are to have their hair combed back from their face with a small amount of gel/product to hold and keep neat.

UNIFORM AND SHOES

TINY TWIRLERS

UNIFORM

- Exclusive Maxi-Jazz Tiny Twirlers Leotard
- MJDS Concert T-Shirt
- Black Dance Pants (Tight, Buggy or 3/4), shorts or jazz skirt
- Black or Hot Pink Singlet top, crop top, crossover or T-Shirt
- Black Leotard with or without jazz/ballet wrap skirt
- Black, Hot Pink or Maxi-Jazz jacket/jumper for Winter

SHOES

- Slip on black jazz shoes – NO Joggers or Jiffies!



JAZZ and BALLET, JAZZ and LYRICAL

PETITE FEET OR JUNIOR JIVERS JAZZ and BALLET

UNIFORM

- Any MJDS branded uniform items
- Black Dance Pants (Tight, Buggy or 3/4), shorts
- Black or Hot Pink Singlet top, crop top, crossover or T-Shirt
- Black Leotard with or without jazz/ballet wrap skirt
- Black, Hot Pink or Maxi-Jazz jacket/jumper for Winter
- MJDS Concert T-Shirt

SHOES

- FOR JAZZ - Slip on black jazz shoes – NO Joggers or Jiffies!
- FOR BALLET - Pink Leather Ballet Shoes



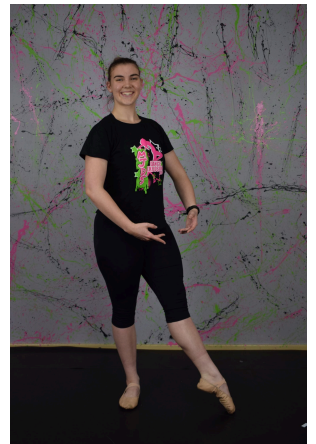
TWEEN, YOUTH, PRETEEN, INTER, SENIOR, ADULT JAZZ and LYRICAL

UNIFORM

- Any MJDS branded uniform items
- Black Dance Pants (Tight, Buggy or 3/4), shorts
- Black or Hot Pink Singlet top, crop top, crossover or T-Shirt
- Black Leotard
- Black, Hot Pink or Maxi-Jazz jacket/jumper for Winter
- MJDS Concert T-Shirt

SHOES

- FOR JAZZ - Slip on black jazz shoes – NO Joggers or Jiffies!
- FOR LYRICAL - Tan Half Soles



**** MOVER and MIGHTY BALLET**

UNIFORM

- Any MJDS branded uniform items
- Black Leotard
- Black Dance Tights (long or 3/4) or fitted black shorts
- Black or Hot Pink Singlet top or crossover
- Black, Hot Pink or Maxi-Jazz jacket/jumper for Winter
- MJDS Concert T-Shirt

SHOES

- Pink Leather Ballet shoes

HIP HOP and CHEERDANCE, HIP HOP and POM

**** PETITE FEET AND JUNIOR JIVERS HIP HOP and CHEERDANCE**

UNIFORM

- Any MJDS branded uniform items
- Black Dance Pants (Tight, Baggy or 3/4), shorts
- Black or Hot Pink Singlet top, crop top, crossover or T-Shirt
- Black, Hot Pink or Maxi-Jazz jacket/jumper for Winter
- MJDS Concert T-Shirt

SHOES

- Slip on black jazz shoes



**** TWEENS, YOUTH, PRETEEN, INTER, SENIOR OR ADULT HIP HOP and POM**

UNIFORM

- Any MJDS branded uniform items
- Black Dance Pants (Tight, Baggy or 3/4), shorts
- Black or Hot Pink Singlet top, crop top, crossover or T-Shirt
- Black, Hot Pink or Maxi-Jazz jacket/jumper for Winter
- MJDS Concert T-Shirt

SHOES

- FOR HIP HOP - As chosen by your class team to match your routine.

FOR POM - Slip On Black Jazz Shoes



MINI, MOVER AND MIGHTY TAPPERS

** JUNIOR JIVERS TAP

UNIFORM

- Any MJDS branded uniform items
- Black Dance Pants (Tights 3/4 or long), shorts
- Black or Hot Pink Singlet top, crop top, crossover or T-Shirt
- Black leotard
- Black, Hot Pink or Maxi-Jazz jacket/jumper for Winter
- MJDS Concert T-Shirt

SHOES

- FOR TAP - tan tap shoes (for girls). Black tap shoes (for boys).



** MOVER/MIGHTY TAPPERS

UNIFORM

- Any MJDS branded uniform items
- Black Dance Pants (Tights 3/4 or long), shorts
- Black or Hot Pink Singlet top, crop top, crossover or T-Shirt
- Black, Hot Pink or Maxi-Jazz jacket/jumper for Winter
- MJDS Concert T-Shirt

SHOES

- Tan tap shoes (for girls). Black tap shoes (for boys).



BOYS

In addition to the above requirements for each style, our MJDS Boys have specific uniform requirements.

- Black Pants or Shorts
- Exclusive MJDS "Boys dance crew" T-shirt
- Black Plain T-Shirt or Singlet
- MJDS Concert T-Shirt
- Black or Maxi-Jazz jacket/jumper for Winter

ENHANCEMENT PROGRAM STUDENTS

In addition to the above requirements for concert classes, please refer to your Enhancement Program Handbook.

Students are to wear:

- EP Jersey
- Plain Black Tights
- Shoes specified for your EP Team Routines