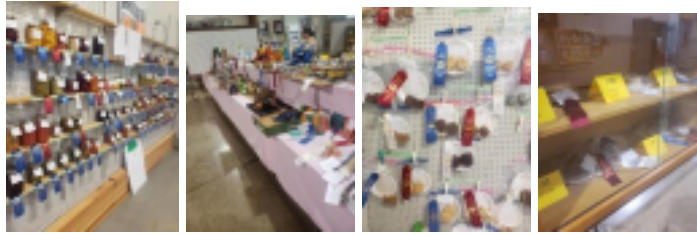


SENIOR HOMEMAKING
DEPARTMENT J
BARBARA ROADCAP, CHAIR



**PLEASE NOTE THESE CATEGORIES HAVE
BEEN UPDATED FOR THE
2021 FAIR.**

TAKE IN OF ALL NON BAKED GOODS FRIDAY, AUGUST 13, 2021 4 PM. TO 7 PM TAKE
IN OF BAKED GOOD SATURDAY, AUGUST 14, 2021 FROM 10 A.M. TO NOON JUDGING
OF QUILTS FRIDAY AUGUST 13, 2021 7:30 PM

JUDGING OF ALL OTHER ITEMS SATURDAY AUGUST 14, 2021 BEGINNING AT 12:30 PM

PICK UP OF ITEMS SUNDAY, AUGUST 22, 2021 BETWEEN 2-4 PM

ALL PREMIUMS WILL BE MAILED OR PICKED UP AT A LATER ANNOUNCED DATE

1. Participants must be a resident within Rockingham County or the City of Harrisonburg.
2. Age for participation in Homemaking Department J is 20 (as of January 1) and older. Only one entry per class, per person. If an entry does not fit the class description, it will not be changed or judged. We reserve the right to accept or refuse an exhibit.
3. No article will be accepted that does not have a division/class listed in the catalog. Articles entered in the Miscellaneous class must not fit in any class listed elsewhere.
4. When there is no competition in a class, the judges reserve the right to award the prize the item is worthy of, or if it is not worthy, no prize will be given All exhibits entered must be the handiwork of the person entering with the exception of the quilting departments where there are allowances – pay particular notice to those description. The exhibits should be completed during the year since the last fair, and not previously exhibited. (Friendship quilt category and machine quilting)
5. No display of articles for commercial purposes.
6. For each section I, II, III, IV, V, VI, a sweepstakes ribbon will be given and a SWEEPSTAKES ribbon will be awarded to the person receiving the most blue ribbons in the entire Department J. In case of multiple winners, awards will be presented to each. Additional ribbons will be awarded at the discretion of the judges.
7. Homemaking blue ribbon winners – please see department's premium food awards and for a special State

Fair opportunity.

8. Department and Fair Management will not be responsible for articles exhibited.

SECTION I - BAKED GOODS \$4 \$3 \$2

Baked products will be brought in

Saturday morning, August 14, 10 A.M. to noon.

All products in this section must be exhibited in clear plastic on white paper plate; ¼ cake, ½ loaf bread, 4 rolls, 4 muffins, and 3 cookies. Use as small a plate as possible for an attractive exhibit.

BREADS (1/2 Loaf and 4 Rolls/Muffins)

J1 Biscuits (Baking Powder)

J2 Biscuits (Cheese, Apple, etc.)

J3 Bread, Banana

J4 Bread, Loaf, Whole Wheat, Yeast

J5 Bread, Loaf, White, Yeast

J6 Bread, Lemon Nut

J7 Bread, Nut

J8 Bread, Pumpkin

J9 Bread, Zucchini

J10 Muffins, Plain

J11 Muffins, Variation

J12 Rolls (Plain Yeast, White

J13 Rolls (Plain, Whole Wheat)

J14 Sourdough Bread

J15 Miscellaneous Bread not previously listed in this category

CAKES (1/4)

J16 Angel Food (No Icing)

J17 Applesauce (Loaf or Tube)

J18 Carrot Cake

J19 Coffee Cake

J20 Chocolate Cake

J21 Devil's Food (Chocolate Icing)

J22 German Chocolate (Iced)

J23 Gingerbread

J24 Holiday Cake, Special Occasion

J25 Jiffy Cake (Jell-O, Pudding, etc.)

J26 Layer White (Iced)

J27 Layer Yellow (Iced)

J28 Marble (No Icing)

J29 Pound Cake (Old Fashioned)

- J30 Pound Cake (Any Kind, No Icing)
- J31 Pumpkin Cake
- J32 Red Velvet Cake
- J33 Spice Cake
- J34 Zucchini cake
- J35 Decorated Cake (Whole Cake)
- J36 Decorated cupcakes plate of 3
- J37 Miscellaneous Cake not previously listed in this category

COOKIES (Plate of 3)

- J38 Cookies, Applesauce, Drop
- J39 Cookies, Brownies
- J40 Cookies, Blonde Brownies
- J41 Cookies, Cereal Bars
- J42 Cookies, Chocolate Chip
- J43 Cookies, Decorated
- J44 Cookies, Chocolate
- J45 Cookies, Filled, Any Kind
- J46 Cookies, Ginger
- J47 Cookies, Oatmeal
- J48 Cookies, Peanut Butter
- J49 Cookies, Pressed
- J50 Cookies, Pumpkin
- J51 Cookies, Raisin
- J52 Cookies, Refrigerator
- J53 Cookies, Snicker Doodles
- J54 Cookies, Sugar
- J55 Miscellaneous Cookie not previously listed in this category

HEALTHY CORNER (3 Cookies, 1/2 Bread, ¼ Cake) **NEW!**

- J56 Sugar free cookies
- J57 Sugar free cakes
- J58 Gluten free cookies
- J59 Gluten free cakes
- J60 Gluten free bread
- J61 Fat free cookies
- J62 Fat free cakes
- J63 Allergy free cookies -label specific allergy

PIES (1/4 or whole 4" to 6" aluminum or glass pans acceptable)

- J64 Blackberry Pie
- J65 Blueberry Pie

J66 Chocolate Meringue Pie
J67 Coconut Meringue Pie
J68 Fruit, Apple Pie
J69 Fruit, Cherry (Sweet or Wax) Pie .
J70 Fruit, Cherry (Sour) Pie
J71 Peach Pie
J72 Lemon Meringue Pie
J73 Mincemeat Pie
J74 Pecan Pie
J75 Pumpkin Pie
J76 Raisin Pie
J77 Raspberry Pie
J78 Rhubarb Pie
J79 Miscellaneous Pie not previously listed in this category

CANDY (5 pieces)

J80 Brittle, Peanut
J81 Chew, Cereal
J82 Dipped Candy
J83 Fudge, Chocolate (Plain)
J84 Fudge, Chocolate (with Nuts)
J85 Fudge, Peanut Butter . J86 Hard Candy
J87 Molded Chocolate
J88 Miscellaneous Candy not previously listed in this category

SECTION II CANNED PRODUCTS \$4 \$3 \$2

Only clear glass regular pint or quart clean canning jars will be accepted. No mayonnaise jars or colored jars, etc., will be accepted. Leave rings on jars. No rusty rings or lids will be accepted. Jars should be clean. No artificial coloring. **Label all jars on the bottom stating contents, but not the name of the exhibitor. If labeled otherwise, they will not be accepted. No cans will be opened for judging.**

FRUITS

J89 Applesauce
J90 Blackberries
J91 Blueberries
J92 Cherries sour
J93 Cherries, sweet
J94 Cherries, white

J95 Juice
J96 Peaches
J97 Pears
J98 Plums (Blue, etc.)
J99 Raspberries
J100 Miscellaneous Fruit not previously listed in this category

VEGETABLES

J101 Beans, Green
J102 Beans, Lima
J103 Beets, Whole
J104 Beets, Sliced
J105 Carrots, Sliced
J106 Corn, Cut Off Cob
J107 Peas
J108 Potatoes
J109 Sweet Potatoes
J110 Tomatoes, Juice
J111 Tomatoes, Halves
J112 Tomatoes, Whole
J113 Miscellaneous Vegetable not previously listed in this category

PIE FILLINGS

J114 Apple pie filling
J115 Blackberry pie filling
J116 Blueberry pie filling
J117 Cherry pie filling
J118 Mincemeat pie filling
J119 Peach pie filling
J120 Miscellaneous Pie Filling not previously listed in this category

MEATS

J121 Beef
J122 Pork, Sausage

SENIOR HOMEMAKING
DEPARTMENT J
BARBARA ROADCAP, CHAIR

J123 Pork, Tenderloin
J124 Poultry (Turkey, Chicken, etc.)
J125 Wild Game
J126 Miscellaneous Meat not previously listed in this category

PRESERVES, JAMS, JELLIES, PICKLES, SAUCES, RELISHES, ETC.

Leave rings on jars. Jams, Jellies, and preserves must be processed. All relishes, preserves, jellies, jams, sauces and honey accepted in clean ½ pint, pint or quart clear canning jars. Dried foods – ½ dozen pieces in plastic bag labeled with contents.

Vinegars must be in clear container quart size and under.

Label all jars on the bottom stating contents, but not the name of the exhibitor. If labeled otherwise, they will not be accepted. No jars will be open for judging.

PRESERVES (Whole, large chunks; thick, clear syrup, pourable)

J127 Preserves, Blueberry

J128 Preserves, Cherry

J129 Preserves, Peach

J130 Preserves, Pear

J131 Preserves, Strawberry

J132 Miscellaneous Preserves not previously listed in this category

JAMS (Chopped, crushed fruit; soft set)

J133 Jam, Blackberry

J134 Jam, Blueberry

J135 Jam, Peach

J136 Jam, Raspberry

J137 Jam, Strawberry

J138 Miscellaneous Jam not previously listed in this category

JELLIES (Clear, no pieces, firm, but spreadable)

J139 Jelly, Apple

J140 Jelly, Blackberry

J141 Jelly, Blueberry

J142 Jelly, Cherry

J143 Jelly, Grape

J144 Jelly, Peach

J145 Jelly, Raspberry

J146 Jelly, Strawberry

HONEY

J147 Honey, with comb

J148 Honey, strained

BUTTER

J149 Apple Butter

J150 Pear Butter

J151 Peach Butter

J152 Miscellaneous Butter not previously listed in this category

PICKLES

J153 Pickles, Beets

J154 Pickles, Bread and Butter

J155 Pickles, Cucumber (Dill)

J156 Pickles, Cucumber (Sweet)

J157 Pickles, Lime

J158 Pickles, Mixed

J159 Pickles, Watermelon

J160 Miscellaneous Pickles not previously listed in this category

RELISHES AND SAUCES

J161 Catsup

J162 Relish

J163 Salsa

J164 Pizza Sauce

J165 Spaghetti sauce

J166 Miscellaneous Relishes AND Sauces not previously listed in this category

DRIED OR DEHYDRATED FOODS (6 pieces or 2 tablespoons or 2 stems in clear plastic sandwich baggie)

J167 Fruits

J168 Meats

J169 Vegetables

J170 Herbs

VINEGARS

J171 Apple Cider Vinegar

J172 Flavored Vinegars

J173 White Cider Vinegar

SECTION III - NEEDLE ARTS \$5 \$4 \$3

Items created using a needle other than hand sewing needle and not listed in Fabric Arts; Technique is most important. All exhibits should be cleaned and laundered before exhibiting. All exhibits must be made by person exhibiting except vintage. Wall Hangings should be finished for hanging. All Quilts and Wall Hangings should have a hanging sleeve or loops in order to display securely. All Framed Needlework should have picture wire attached and be ready to hang.

COMFORTERS

- J174 Baby comforter, Knotted/tied
- J175 Bed comforter, Knotted/tied
- J176 Comforter, frayed edge
- J177 Lap quilt, knotted/tied

QUILTED ITEMS, HAND QUILTED

- J178 Heirloom quilt, created using clothing articles or hankies
- J179 Lap Quilt
- J180 Quilt, Baby Hand Appliqued
- J181 Quilt, Baby Machine Appliqued
- J182 Quilt, Baby Machine Embroidered
- J183 Quilt, Baby, Hand Embroidered
- J184 Quilt, Baby, Pieced
- J185 Quilt, Cathedral Window
- J186 Quilt, Friendship
- J187 Quilt, Hand Appliqued
- J188 Quilt, Hand Embroidered
- J189 Quilt, Machine Appliqued
- J190 Quilt, Machine Embroidered
- J191 Quilt, Panels
- J192 Quilt, Pieced
- J193 Quilt, Pictorial
- J194 Quilt, Pillow
- J195 Quilted, Whole Cloth
- J196 Quilted Table Runner

SENIOR HOMEMAKING DEPARTMENT J BARBARA ROADCAP, CHAIR

- J197 Vintage Quilt, 25 years or older made by self and or others.
- J198 Wall Hanging, Hand Appliqued

J199 Wall Hanging, Machine Appliqued
J200 Wall Hanging, no larger than 100" perimeter
J201 Wall Hanging, no larger than 200" perimeter
J202 Wall Hanging, no larger than 40" perimeter

QUILTED ITEMS, MACHINE QUILTED

J203 Heirloom quilt, created using clothing articles or hankies
J204 Lap Quilt
J205 Quilt, Baby Hand Appliqued
J206 Quilt, Baby Machine Appliqued
J207 Quilt, Baby Machine Embroidered
J208 Quilt, Baby, Hand Embroidered
J209 Quilt, Baby, Pieced
J210 Quilt, Cathedral Window
J211 Quilt, Friendship
J212 Quilt, Hand Appliqued J213 Quilt, Hand Embroidered
J214 Quilt, Machine Appliqued
J215 Quilt, Machine Embroidered
J216 Quilt, Panels
J217 Quilt, Pictorial
J218 Quilt, Pieced
J219 Quilt, Pillow
J220 Quilted Table Runner
J221 Quilted Whole cloth
J222 Vintage Quilt, 25 years or older made by self or with others
J223 Wall Hanging, Hand Appliqued
J224 Wall Hanging, Machine Appliqued
J225 Wall Hanging, no larger than 100" perimeter
J226 Wall Hanging, no larger than 200" perimeter
J227 Wall Hanging, no larger than 40" perimeter

QUILTED BY OTHERS

J228 Heirloom quilt, created using clothing articles or hankies
J229 Lap Quilt
J230 Quilt, Baby Hand Appliqued
J231 Quilt, Baby Machine Appliqued
J232 Quilt, Baby Machine Embroidered
J233 Quilt, Baby, Hand Embroidered
J234 Quilt, Baby, pieced
J235 Quilt, Cathedral Window
J236 Quilt, Friendship
J237 Quilt, Hand Appliqued

J238 Quilt, Hand Embroidered
J239 Quilt, Machine Appliqued
J240 Quilt, Machine Embroidered
J241 Quilt, Panels
J242 Quilt, Pictorial
J243 Quilt, Pillow
J244 Quilt, Whole Cloth
J245 Vintage Quilt, 25 years or older made by self or with others
J246 Wall Hanging, Hand Appliqued
J247 Wall Hanging, Machine Appliqued
J248 Wall Hanging, no larger than 100" perimeter
J249 Wall Hanging, no larger than 200" perimeter
J250 Wall Hanging, no larger than 40" perimeter

COUNTED CROSS STITCH (from pattern or original design)

J251 Counted cross stitch Framed picture, worked area up to 8 1/2" x 10"
J252 Counted cross stitch Framed picture, worked area over 8 1/2" x 10" J253
Counted cross stitch Baby bib
J254 Counted cross stitch Ornament
J255 Counted cross stitch Pillow
J256 Counted cross stitch Sampler worked area up to 8 1/2" x 10" J257
Counted cross stitch Sampler, worked area over 8 1/2" x 10" J258
Counted cross stitch Towel
J259 Miscellaneous Counted cross stitch item not previously listed in the category

STAMPED CROSS STITCH (pattern preprinted or

J264 fabric)
transferred onto
J265 Stamped cross stitch Framed picture, worked area up to 8 1/2" x 10"
J266 Stamped cross stitch Framed picture, worked area over 8 1/2" x 10" J267
Stamped cross stitch Baby bib
J268 Stamped cross stitch Pillow
J269 Stamped cross stitch Pillow case
J270 Stamped cross stitched Towel
J271 Miscellaneous Stamped cross stitch not previously listed in this category

HAND EMBROIDERY (original work or kit, stitched by hand)

J272 Embroidered Garment, Original work

J273 Embroidered Ornament, Original work
J274 Embroidered Pillow, Original work
J275 Embroidered Wall Hanging, Original work - Up to 8"sq work area
J276 Embroidered Wall Hanging, Original work - Over 8" sq. work area
J277 Embroidered Ornament, Kit
J278 Embroidered Pillow, Kit
J279 Embroidered Wall Hanging, Kit - Up to 8"sq worked area
J280 Embroidered Wall Hanging, Kit - Over 8" sq. worked area
J281 Miscellaneous Hand Embroidered item not previously listed in this category

MACHINE EMBROIDERY (Original work/ free motion, stitched by machine) **NEW**

J282 Embroidered Accessory
J283 Embroidered Bag/tote/backpack
J284 Embroidered Clothing item - woven
J285 Embroidered Clothing item - knit
J286 Embroidered Mixed media -threads, ribbon, paper, etc.
J287 Embroidered Ornament
J288 Embroidered Wall hanging
J289 Miscellaneous Machine Embroidered item not previously listed in this category

MACHINE EMBROIDERY (Computerized Pattern stitched by machine) **NEW!**

J290 Embroidered Bag/tote/backpack
J291 Embroidered Cap, hat,
J292 Embroidered Clothing item Knit
J293 Embroidered Clothing item woven
J294 Embroidered Novelty item
J295 Embroidered Ornament
J296 Embroidered Sweatshirt
J297 Embroidered Wall-hanging
J298 Embroidered Towel
J299 Miscellaneous Machine Embroidered item not previously listed in this category

KNITTING

J300 Knitted Blanket

SENIOR HOMEMAKING
DEPARTMENT J
BARBARA ROADCAP, CHAIR

J301 Knitted Animal/Critter/Toy
J302 Knitted Baby Set
J303 Knitted Baby blanket (Crib or Carriage)

J304 Knitted Fingerless gloves
J305 Knitted Hat
J306 Hat (Loomed)
J307 Knitted Garment, Top
J308 Knitted Mittens
J309 Knitted Scarf
J310 Scarf (Loomed)
J311 Knitted Shawl/wrap/poncho/cape
J312 Knitted Socks
J313 Knitted Sweaters (Cardigan)
J314 Knitted Sweaters (Pullover)
J315 Knitted item With Recycled material
J316 Variety Basket of Knitted Novelties- grouping of at least 5 different items (critters, doo dads, mug warmers, dish cloths for example)
J317 Miscellaneous Knitted Item not previously listed in this category

CROCHET

J318 Crocheted Blanket, Lap robe
J319 Crocheted Blanket, Granny
J320 Crocheted Blanket, Ripple
J321 Crocheted Blanket, Shell Stitch
J322 Crocheted Blanket, Broom Stitch
J323 Crocheted Blanket/Not Listed
J324 Crocheted Animal/Critter/Toy
J325 Crocheted Baby Blankets (Crib or Carriage)
J326 Crocheted Booties
J327 Crocheted Baby Set
J328 Crocheted Decorative item
J329 Crocheted Doll Ensemble
J330 Crocheted Dress, Infant or Child
J331 Crocheted Edge, Pillow Case
J332 Crocheted Fingerless gloves
J333 Crocheted Garment, Top
J334 Crocheted Hat
J335 Crocheted Hat and Scarf Set
J336 Crocheted Jewelry
J337 Crocheted Mittens

SENIOR HOMEMAKING
DEPARTMENT J
BARBARA ROADCAP, CHAIR

J338 Crocheted Pillow
J339 Crocheted Purse

- J340 Crocheted Scarf
- J341 Crocheted Shawl/ wrap/ poncho /cape
- J342 Crocheted Scuffs/slippers
- J343 Crocheted Socks
- J344 Crocheted Sweater
- J345 Crocheted item Made w/ Recycled material
- J346 Variety Basket of Crocheted Novelties- grouping of at least 5 different items (critters, doo dads, mug warmers, dish cloths for example)
- J347 Miscellaneous Crocheted items not previously listed

MISCELLANEOUS NEEDLE ARTS not previously listed in
another Needle Art category **\$5 \$4 \$3**

- J348 Heirloom Stitching, Hardinger
- J349 Heirloom Stitching, Hemstitch
- J350 Heirloom Stitching, Smocking
- J351 Latch Hook, Pillow
- J352 Latch hook, Rug
- J353 Needle Felting, Creature
- J354 Needle Felting, Decorative object
- J355 Needle Felting, Ornament
- J356 Needlepoint, Framed Picture
- J357 Needlepoint, Stocking
- J358 Needlepoint, Miscellaneous
- J359 Needle Punch
- J360 Plastic Canvas, Decorative object
- J361 Plastic canvas, 3-D Ornament
- J362 Plastic Canvas, Flat Ornament
- J363 Plastic Canvas, Magnet
- J364 Plastic Canvas, Tissue box
- J365 Rug Hooking, Decorative item
- J366 Rug Hooking, Rug
- J367 Rug Hooking, Wall hanging
- J368 Miscellaneous, does not fit in any other needle arts category

SECTION IV - FABRIC ARTS using hand needle, sewing machine and/or
serger. Items should be clean and pressed. Hangers used where
appropriate **\$5 \$4 \$3**

SENIOR HOMEMAKING
DEPARTMENT J
BARBARA ROADCAP, CHAIR

NEW Added back this year 2021

FASHION SEWING

SEWN GARMENTS MADE FOR ADULTS

J369 Sewn Apron, w/waistband
J370 Sewn Apron, w/ bib
J371 Sewn Apron, cobbler style
J372 Sewn Apron, Miscellaneous not previously listed
J373 Sewn Athletic/Sports apparel

J374 Sewn Blouse, w/ sleeves
J375 Sewn Blouse, w/o sleeves
J376 Sewn Blouse, t-shirt style, knit
J377 Sewn Dress / Jumper
J378 Sewn Dress, formal/dressy
J379 Sewn Nightwear
J380 Sewn Shorts
J381 Sewn Skirt, w/ fitted waistband
J382 Sewn Skirt, w/o fitted waistband
J383 Sewn Skorts
J384 Sewn Split skirt
J385 Sewn Original Design, not from commercial pattern J386
Sewn Upcycled, Garment made from another garment J387
Miscellaneous sewn item not previously listed

SEWN GARMENTS MADE FOR CHILDREN

J388 Sewn for Baby up to age 1, Garment
J389 Sewn for Baby up to age 1, 2 or 3 piece Outfit
J390 Sewn for Baby up to age 1, Pajamas
J391 Sewn for Toddler age 1-3, Garment
J392 Sewn for Toddler age 1-3, 2 or 3 piece Outfit
J393 Sewn for Toddler age 1-3, Pajamas
J394 Sewn for Child age 4-10, Garment
J395 Sewn for Child age 4-10, 2 or 3 piece Outfit
J396 Sewn for Child age 4-10, Pajamas

COSTUMES

J397 Costumes sewn for adults
J398 Costumes sewn for children

SENIOR HOMEMAKING
DEPARTMENT J
BARBARA ROADCAP, CHAIR

WEARABLE SEWN ACCESSORIES

J399 Sewn Purse/handbag
J400 Sewn Scarf
J401 Sewn Tote bag
J402 Miscellaneous sewn garment accessory not previously listed

FABRIC HANDICRAFT SEWING

SEWN HOME DECOR and ACCESSORIES

J403 Basket, Fabric Coiled
J404 Basket, Fabric Pieced
J405 Sewn Casserole carrier
J406 Sewn Dresser scarf
J407 Sewn Hot pad
J408 Sewn Hot mitt
J409 Sewn Mug rug
J410 Sewn Pillow, patchwork (not quilted/ebb)
J411 Sewn Pillow, Plain or Simple
J412 Sewn Pillow, Embellished
J413 Sewn Pillowcase
J414 Sewn Place mats (other than quilted)
J415 Sewn Table runner (other than quilted)
J416 Sewn Wall hanging (other than quilted)
J417 Sewn Zippered bag
J418 Miscellaneous Sewn Accessory not previously listed

SEWN HOLIDAY DECORATIONS—Year-Round Holidays

J419 Sewn Christmas Stocking
J420 Sewn Felt Decorative Object
J421 Sewn Flag or Banner
J422 Sewn Holiday Centerpieces/ Table decoration J423
Sewn Holiday Wall hanging, Kit
J424 Sewn Holiday Wall hanging, Original design
J425 Sewn Holiday Wreath
J426 Sewn Ornament, 3-D (2+ sided)
J427 Sewn Ornament, Flat (One-sided)
J428 Sewn Tree Skirt
J429 Miscellaneous Sewn Holiday Decoration not listed above

SENIOR HOMEMAKING
DEPARTMENT J
BARBARA ROADCAP, CHAIR

SEWN CHILDREN'S TOY/ACCESSORY

J430 Sewn Cloth Doll
J431 Sewn Doll Dress

J432 Sewn Doll Wardrobe (3 or more items)
J433 Sewn Stuffed toy
J434 Sewn Nursery/Baby accessory, Bib/Burp cloth
J435 Sewn Nursery/Baby accessory, Diaper bag
J436 Sewn Nursery/Baby accessory, Décor item
J437 Miscellaneous Children's Toy or Accessory not previously listed

SEWN PET ITEMS/ACCESSORIES NEW!

J438 Sewn Pet Bag
J439 Sewn Pet Bed
J440 Sewn Pet Collars
J441 Sewn Pet Costume
J442 Sewn Pet Outfit
J443 Sewn Pet Toy
J444 Miscellaneous Sewn Pet item not previously listed

SECTION V - HANDCRAFTED ARTS (Anything utilizing glitter MUST be encased in plastic)

BASKETRY \$5 \$4 \$3

J445 Flat Splint (3/4 of basket woven with flat oak or ash reed)
J446 Miniature (anything 2" diameter and under)
J447 Natural Material (honeysuckle, grapevine, willow, wisteria, etc.)
J448 Rib Construction (egg, melon, potato, etc.)
J449 Round Reed or Vacker (using all round reed)
J450 Miscellaneous Basketry not previously listed

HOLIDAY DECORATIONS Not listed in other categories \$5 \$4 \$3

J451 Christmas Decorative item
J452 Christmas Table decoration
J453 Christmas Tree ornaments, Beaded
Christmas Tree ornaments, Multimedia or combination
J454 2 items)
of materials (Submit
J455 Christmas Tree ornaments, Sequin/Beading on Felt
J456 Christmas Tree ornaments, Upcycled J457 Christmas
Tree ornaments, Wooden J458 Christmas Wall hanging,
Sequin/Beading on Felt

SENIOR HOMEMAKING
DEPARTMENT J
BARBARA ROADCAP, CHAIR

J459 Christmas Wreath

J460 Easter/Spring Decorative item
J461 Easter/Spring Table decoration
J462 Easter/ Spring Wreath
J463 Fall Decorative item
J464 Fall Table Decoration
J465 Fall Wreath
J466 Halloween Decorative item
J467 Halloween Table decoration
J468 Halloween Wreath
J469 Patriotic Decorative item
J470 Patriotic Table decoration
J471 Patriotic Wreath
J472 Valentine's Day Decorative item
J473 Valentine's Day Table Decoration
J474 Valentine's Day Wreath
J475 Miscellaneous Holiday decoration not previously listed

JEWELRY judged on use of Material/Technique **\$4 \$3 \$2**

J476 Jewelry Beadwork, Strung
J477 Jewelry Beadwork, Woven
J478 Jewelry Ceramic
J479 Jewelry Glass/Stone
J480 Jewelry Leather
J481 Jewelry Macramé
J482 Jewelry Metalwork
J483 Jewelry Paper
J484 Jewelry Plastic
J485 Jewelry Polymer Clay
J486 Jewelry Resin
J487 Jewelry Shell/Natural materials
J488 Jewelry Upcycled
J489 Jewelry Wire/Coiled
J490 Jewelry Wooden
J491 Miscellaneous Jewelry not previously listed in this category

MACRAME **\$4 \$3 \$2 NEW!**

J492 Macramé Plant hanger (shorter than 18" measured from hanger to bottom of design)
J493 Macramé Plant hanger (18" long and up measured from hanger to bottom of design) J494
Macramé Wall hanging (knotted area 10" square or less)

SENIOR HOMEMAKING
DEPARTMENT J
BARBARA ROADCAP, CHAIR

J495 Macramé Wall hanging (knotted area larger than 10" square)

J496 Macramé Ornament

J497 Miscellaneous Macramé not previously listed in this category

PAPER CRAFTS (paper/board is main construction material)

\$4 \$3 \$2

J498 3-D work (dimensional)

J499 Altered Book

J500 Cardboard/chipboard/mat board work

J501 Collage journal

J502 Collage/Decoupage

J503 Flat work

J504 Flowers

J505 Framed work

J506 Greeting Card, Die Cut / Punched shapes

J507 Greeting Card, Dry embossed (dimensional design)

J508 Greeting Card, Hand colored

J509 Greeting Card, Holiday Card

J510 Greeting Card, Mixed media

J511 Greeting Card, Rubber stamped

J512 Greeting Card, Wet embossed (dimensional design)

J513 Greeting Card, 3-D (pop-up, shadow box, etc.)

J514 Mixed paper media

J515 Ornaments (flat, one-sided)

J516 Ornaments (3-D, 2+ sides)

J517 Quilling, flat (design on one side)

J518 Quilling, 3-D (design with 2 or more sides)

J519 Scrapbooking, Celebrations/Everyday Moments/Travel (submit 2 pages)

J520 Scrapbooking, Family/Pets/Heritage/Genealogy/Tribute (submit 2 pages)

J521 Shadow Box

J522 Upcycled work using paper craft/cardboard products

J523 Miscellaneous Paper Craft not previously listed in this category ,

POTTERY, HAND BUILT \$5 \$4 \$3

J524 Hand built Bowl

J525 Hand built Mug

J526 Hand built Plate

J527 Hand built Open Container (vase, bottle, planter, pitcher, etc.)

J528 Hand built Kitchenware (soap dish, garlic plate, etc.)

SENIOR HOMEMAKING
DEPARTMENT J

BARBARA ROADCAP, CHAIR

J529 Hand built Decorative object

J530 Miscellaneous Hand built pottery not previously listed

POTTERY, WHEEL THROWN \$5 \$4 \$3

J531 Wheel thrown Bowl

J532 Wheel thrown Mug

J533 Wheel thrown Plate

J534 Wheel thrown Open Container (vase, bottle, planter, pitcher, etc.) J535

Wheel thrown Kitchenware (soap dish, garlic plate, etc.) J536 Wheel thrown
Decorative object

J537 Miscellaneous Wheel thrown pottery not previously listed

THEMED CRAFT \$5 \$4 \$3 **NEW!**

Rockingham County Fair - A craft inspired by your vision

J538 **\$4 \$3 \$2**

of this year's fair

theme **WEAVING**

J539 Dream Catcher

J540 Loom (other than wall hanging or rug)

J541 Mixed Media/Misc. materials

J542 Woven Rug

J543 Wall Hanging (12" square or smaller)

J544 Wall Hanging (larger than 12" square)

J545 Miscellaneous Weaving item not previously listed in this category

WINE CRAFT \$4 \$3 \$2 **NEW!**

J546 Cork Art

J547 Decorated wine glasses

J548 Upcycled wine bottle

J549 Wine bag

WOOD CARVING \$5 \$4 \$3

J550 Aquatic, Realistic or Stylized

J551 Bird, Realistic or Stylized

J552 Chainsaw Carving

J553 Abstract Carving

J554 Animal, Realistic or Stylized

J555 Caricature Carving

J556 Chip Carving

J557 Human Sculpture, Realistic or Stylized

SENIOR HOMEMAKING
DEPARTMENT J
BARBARA ROADCAP, CHAIR

J558 Ornamental Carving

J559 Relief Carving, Realistic or Stylized

J560 Waterfowl/Shorebird, Realistic or stylized

J561 Whittling

J562 Miscellaneous Wood Carving not previously listed in this category

WOOD TURNING \$5 \$4 \$3

J563 Wood Turned Bowl/Platter

J564 Wood turned Box/Container

J565 Wood turned Hollow form

J566 Wood turned Pens/Pencil

J567 Wood turned Vase

J568 Wood turned incorporating surface treatments or decorations J569

Wood turned Vase

J570 Miscellaneous Wood Turning not previously listed in this category

WOODWORKING \$5 \$4 \$3

J571 Wooden Bed

J572 Wooden Bowl

J573 Wooden Box

J574 Wooden Cabinet

J575 Wooden Chair

J576 Wooden Item made from a kit

J577 Wooden Model not made from a kit

J578 Wooden Musical Instrument

J579 Wooden Table

J580 Wooden Tools and Toys

J581 Miscellaneous Woodworking item not previously listed in this category

MISCELLANEOUS HANDCRAFTED ARTS \$4 \$3 \$2 J582

Alcohol Inks **NEW!**

J583 Beaded item (other than Christmas ornament or Jewelry)

J584 Candle, handmade

J585 Decorative Painting, Fabric item

J586 Decorative Painting, Glass item

J587 Decorative Painting, Metal item

J588 Decorative Painting, Rocks

J589 Decorative Painting, Wood item

J590 Decoupage item

J591 Die-cut Machine Design, garment **NEW!**
SENIOR HOMEMAKING
DEPARTMENT J
BARBARA ROADCAP, CHAIR

- J592 Die-cut Machine Design, home décor **NEW!**
J593 Die-cut Machine Design, wood **NEW!**
J594 Dot painting **NEW!**
J595 Framed picture (made from material not previously listed)
J596 Glass Etching
J597 Handmade flowers (other than paper)
J598 Leatherwork (tooled, carved, stamped, etc.)
J599 Metalwork item (tin punch, embossed, etc.)
J600 Miniatures, one piece
J601 Miniatures, room/vignette/group
J602 Mosaics
J603 Novelty Item
J604 Paint Pouring, 12 inches and smaller **NEW!**
J605 Paint Pouring, 12 inches and larger **NEW!**
J606 Pressed Flowers: card or picture
J607 Rubber Stamped item (other than on paper)
J608 Seashell Craft
J609 Shadow Box Display
J610 Soap, handmade/decorated
J611 Stained Glass
J612 Stenciled item
J613 String Art
J614 Upcycled Craft (other than paper/cardboard products)
J615 Wall Hanging Not previously listed in any other section/category J616
Miscellaneous Craft Not previously listed in any other category

SECTION VI ASSISTED LIVING ADULTS OPEN CLASS \$4 \$3 \$2

**Retirement Homes, Assisted Living OR any adult
receiving some form of assisted care.**

- J617 Blanket
J618 Articles made of Wood
J619 Beaded Items
J620 Canvas Craft
J621 Ceramics
J622 Christmas Tree Ornaments
J623 Craft made from Paper
J624 Creative Crafts
J625 Crocheted Articles Other than Afghans and pillows

J626 Embroidered Articles

J627 Foam Articles

SENIOR HOMEMAKING
DEPARTMENT J
BARBARA ROADCAP, CHAIR

J628 Hand Stitched Items

J629 Items made of Wool and Needle Felting

J630 Jewelry, Earrings

J631 Jewelry, Necklace

J632 Jewelry, Pin or Pendant

J633 Knitted Articles

J634 Lap Robe

J635 Latch Hook

J636 Nature Craft

J637 Novelty Item

J638 Pillow, Crocheted

J639 Pillow, Patchwork

J640 Quilt, Comforter

J641 Recycled Articles

J642 Rubber Stamp Items

J643 Sand Art

J644 Sewn Accessory

J645 Sewn Craft

J646 Sewn Garment

J647 Yarn Arts

J648 Miscellaneous item not previously listed