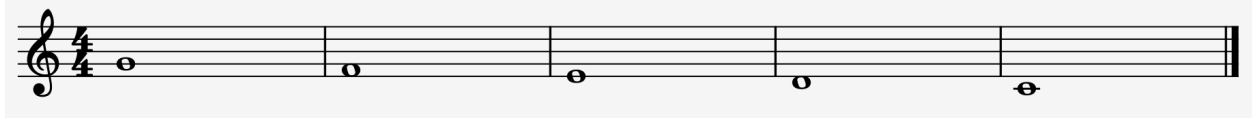


# LESSON 23 – MARCH STEPS

## Tone Range



## Chords Learned

- **C Major** (C–E–G)
- **F Major** (F–A–C)
- **G Major** (G–B–D)
- **Bb Major** (Bb–D–F)
- **D Minor** (D–F–A)

## SCORE PARTS – INSTRUMENT GUIDE

### Voice (Singing)

C G G C

Mar - ching in a line. Pen - cils sharp and fine.

5 C G G C

Left foot right foot step in time. Mar - ching with the school chime.

### Verse 1:

Marching in a line.  
Pencils sharp and fine.  
Left foot, right foot,  
step in time.  
Marching with the  
school chime.

### Verse 2:

Music starts the day,  
In a joyful way.  
Clap the beat and  
count the time,  
Let your rhythm play.

### Verse 3:

Sharpened minds are  
bright,  
Working hard feels  
right.  
Books and papers,  
notes and plans,  
Learning's in our  
hands.

### Verse 4:

Every note we play,  
Leads us day by day.  
Practice, focus,  
steady hands,  
Music understands.

### Violin

5

## Piano

C 1 3 1 3 G 2 G 4 3 2 4 C 3

Mar - ching in a line. Pen - cils sharp and fine.

5 C 3 5 3 5 G 4 3 2 G 5 4 3 2 C 1 1

Left foot right foot step in time. Mar - ching with the school chime.

## Guitar

Tablature for guitar (T, A, B strings) in 4/4 time. The piece consists of two systems of four measures each.

**System 1:**

- Measure 1: C (T: 1-0-1-0, A: 3, B: 3)
- Measure 2: G (T: 1-0-3-1, A: 0, B: 3)
- Measure 3: G (T: 1-0-3-1, A: 0, B: 3)
- Measure 4: C (T: 1-0-3-1, A: 0, B: 3)

**System 2:**

- Measure 1: C (T: 0-3-0-3, A: 1-0-3, B: 3)
- Measure 2: G (T: 1-0-3, A: 3, B: 1-0-3)
- Measure 3: G (T: 3-1-0-3, A: 1-1, B: 3)
- Measure 4: C (T: 1-1, A: 3, B: 3)

### Ukulele

Tablature for ukulele (T, A, B strings) in 4/4 time. The piece consists of two systems of four measures each.

**System 1:**

- Measure 1: C (T: 3-0-3-0, A: 2, B: 3)
- Measure 2: G (T: 1-0-2-1, A: 0, B: 2)
- Measure 3: G (T: 1-0-2-1, A: 0, B: 2)
- Measure 4: C (T: 1-0-2-1, A: 0, B: 2)

**System 2:**

- Measure 1: C (T: 0-3-0-3, A: 1-0-2, B: 3)
- Measure 2: G (T: 1-0-2, A: 3-1-0-2, B: 3)
- Measure 3: G (T: 3-1-0-2, A: 3-3, B: 3)
- Measure 4: C (T: 3-3, A: 3, B: 3)

### Cello

Musical notation for cello in 4/4 time. The piece consists of two systems of four measures each.

**System 1:**

- Measure 1: C (T: 1-0-1-0, A: 3, B: 3)
- Measure 2: G (T: 1-0-3-1, A: 0, B: 3)
- Measure 3: G (T: 1-0-3-1, A: 0, B: 3)
- Measure 4: C (T: 1-0-3-1, A: 0, B: 3)

**System 2:**

- Measure 1: C (T: 0-3-0-3, A: 1-0-3, B: 3)
- Measure 2: G (T: 1-0-3, A: 3, B: 1-0-3)
- Measure 3: G (T: 3-1-0-3, A: 1-1, B: 3)
- Measure 4: C (T: 1-1, A: 3, B: 3)

### Bass Guitar

Fingerboard diagram for guitar in 4/4 time. The diagram shows two staves, Treble (T) and Bass (B), with fret numbers (0, 2, 3) and a measure rest symbol (a comma) indicating a whole rest. The diagram is divided into two systems, each containing four measures. The first system shows a sequence of fret numbers: 3, 2, 3, 2, 0, 3, 2, 0, 3, 2. The second system shows a sequence of fret numbers: 0, 3, 2, 0, 3, 2, 0, 3, 3, 3. The diagram is divided into two systems, each containing four measures.

### Drum Kit (or Any Percussion)

Drum kit notation in 4/4 time. The notation shows two staves, Treble (T) and Bass (B), with a key signature of one sharp (F#) and a time signature of 4/4. The notation is divided into two systems, each containing four measures. The first system shows a sequence of notes: quarter notes, eighth notes, and sixteenth notes. The second system shows a sequence of notes: quarter notes, eighth notes, and sixteenth notes. The notation is divided into two systems, each containing four measures.