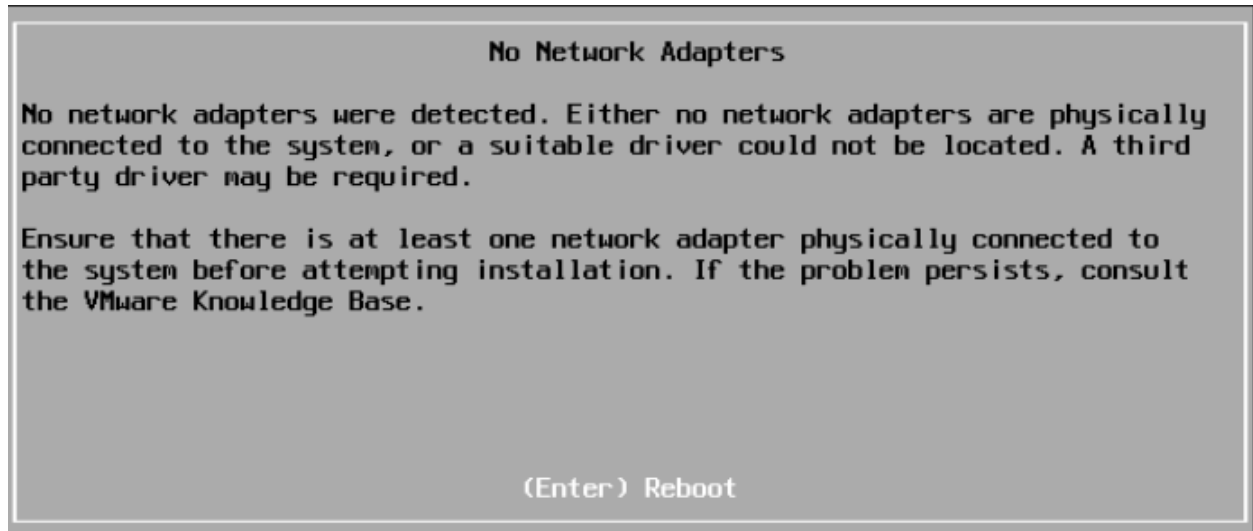


I know ESXi is very picky on network adapters, so I never dare to try new motherboard (don't want to waste the onboard NIC).

Recently we ordered **Asus P8H77-V LE Z77 Socket 1155 8 Channel HD Audio ATX Motherboard** which is compatible to ESXi (we bought the same one before), but we placed wrong order on the processor **Intel Core i5 4670 3.40GHz Socket 1150 6MB Cache Retail Boxed Processor** because of my ignorance. I didn't noticed the socket mismatch until I tried to put the CPU onto the MB.

I had to return either the processor or the MB. As the CPU box was unsealed, I had to get a MB replacement instead. Finally I chose **Gigabyte GA-H87-HD3 Socket 1150 VGA DVI HDMI ATX Motherboard**, as its spec tells the LAN is **Realtek GbE LAN chip (10/100/1000 Mbit)**.

But ESXi 5.5 installation complained "No network adapters were detected".

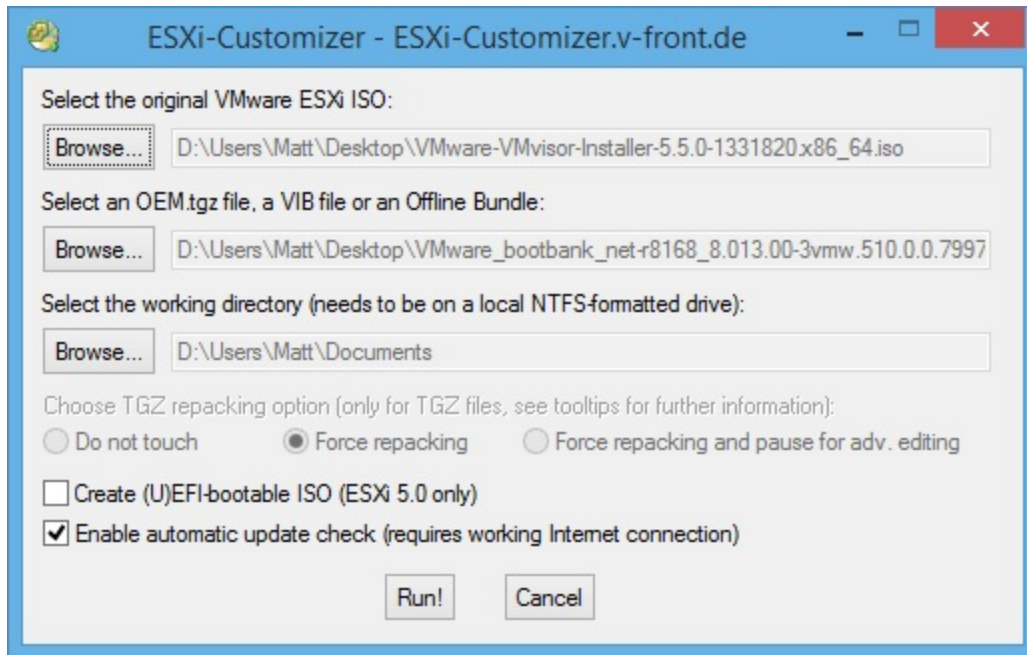


Searched on Internet and found Realtek driver was dumped in ESXi 5.5 (it does exist in v5.1).

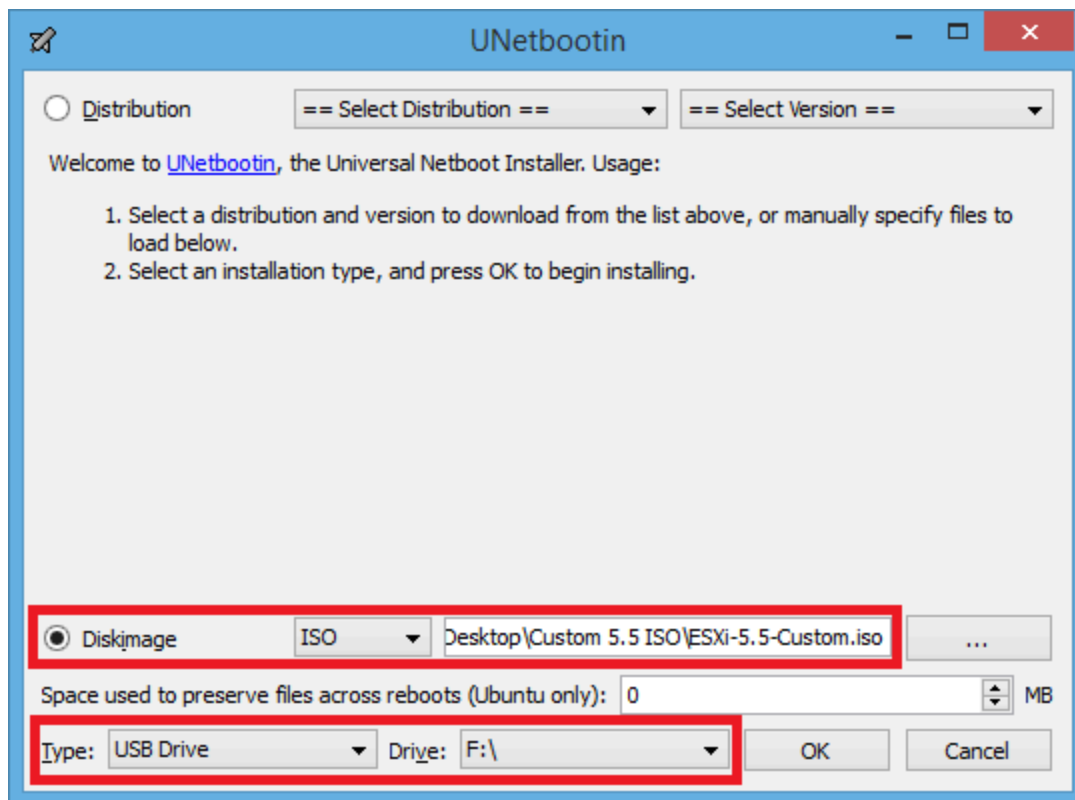
Then I followed these links, [Adding Realtek R8168 Driver to ESXi 5.5.0 ISO](#), [Add drivers to a VMware ESXi ISO using Windows](#). Basically use the tool [ESXi Customizer](#) to add the realtek drivers which are extracted from V5.1 iso to generate a customized ESXi 5.5 ISO.

Sound like the tool can't add two vib files in one go, so I tried 8168 first.

In my test, I didn't check the two options shown on the tool main dialog.



You can then burn the new ISO to a CD and use it to install vSphere 5.5 on your host. In order to not waste CDRom, I decided to try the USB flash installation.



Follow this link [Create a VMware ESXi Bootable Flash Drive on Windows](#), it is

straightforward. Mainly you need another tool called [UNetbootin](#).

After that, I don't think there is anything special I should mention. The conclusion is, ESXi 5.5 can be run on the motherboard **Gigabyte GA-H87-HD3 Socket 1150 VGA DVI HDMI ATX Motherboard!**