

National Parks & Pixie

Introduction

This week you will be learning about 5 National Parks in the United States and creating a short Pixie project about each one. Your job is to follow the directions and complete your journal each day. You will work with a partner during your time in the STEM Lab, so be sure to communicate and collaborate with that person.

Materials:

Ready to begin? Move on to “**DAY 1**” in the instructions. It is very important to **READ the directions for each day carefully**.

Anything in [blue](#) is a hyperlink, that will open a resource for you to use.

Questions in purple should be discussed with your partner.

Day 1

1. Today you and your partner will begin by exploring the Kenai Fjords in Alaska.

- Click on the image below, and click the blue link that pops up.
- Then select the Kenai Fjords as your first expedition.
- Watch all of the videos and click all of the links (don't skip) as you explore Kenai Fjords.

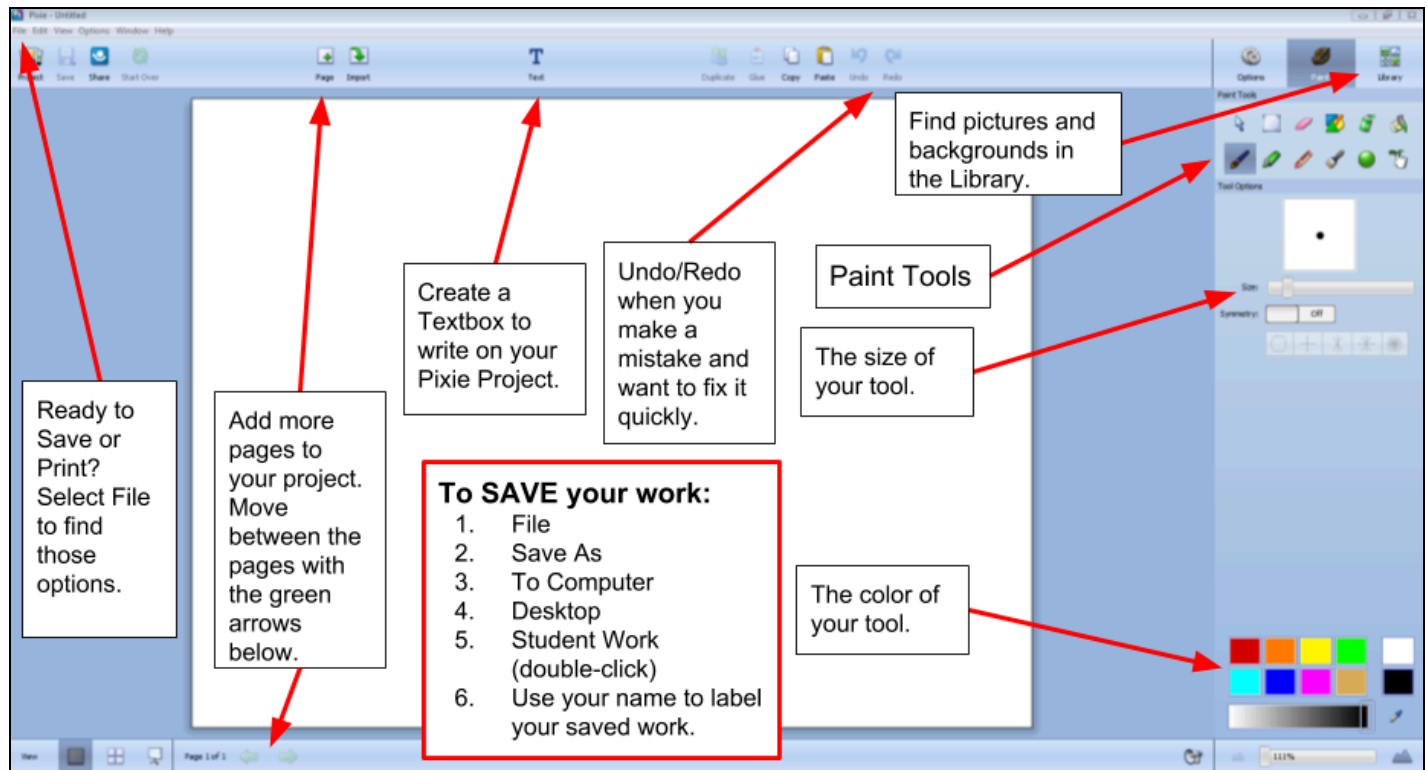


Questions for Conversation (with your partner):

- Why do you think the Glaciers are melting so quickly?
- What are 3 new things you learned during the Kenai Fjords Expedition?

2. Create a **Pixie Project** about Kenai Fjords.

- Take a few minutes to familiarize yourself with the tools in Pixie4. Study and read the picture below before you open the Pixie4 Software.



- Use the Pixie4 software to create a presentation about Kenai Fjords.
- Save your work for Day 2.
 - File → Save As → to Computer → Desktop → Student Work Folder → Student Work Folder (again) → Label your work as your names (you and your partner together).
- **DO NOT print today!** Wait until the end of the week, and pick your favorite 1 or 2 projects to print out (each partner can print 2).

3. Write in your journal! Include a picture of your Pixie Project (you can take a picture of the screen with your iPads - Complete Slides 1 & 2 (Day 1))

Day 2

1. Choose another National Park to visit and explore today.

- Click on the image below, and click the blue link that pops up.
- Then select one of the other National Parks to explore.
- Watch all of the videos and click all of the links (don't skip) as you explore your National Park.



Questions for Conversation (with your partner):

- What are 3 new things you learned during your National Park Expedition today?

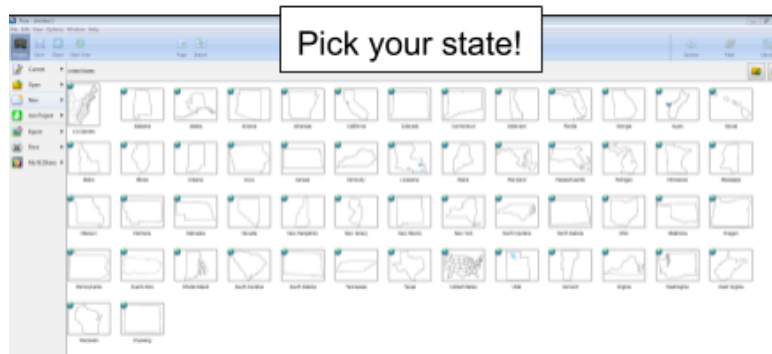
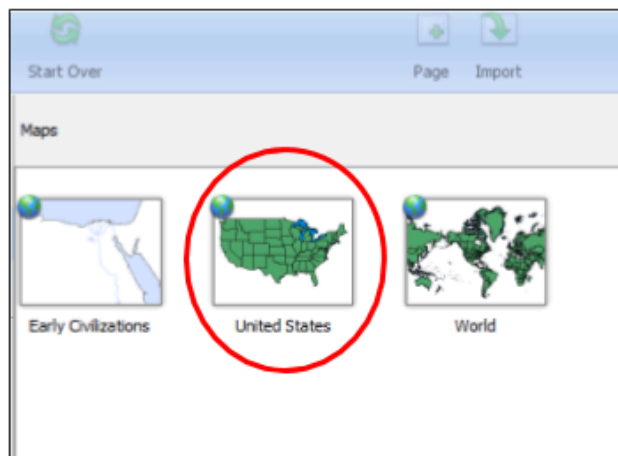
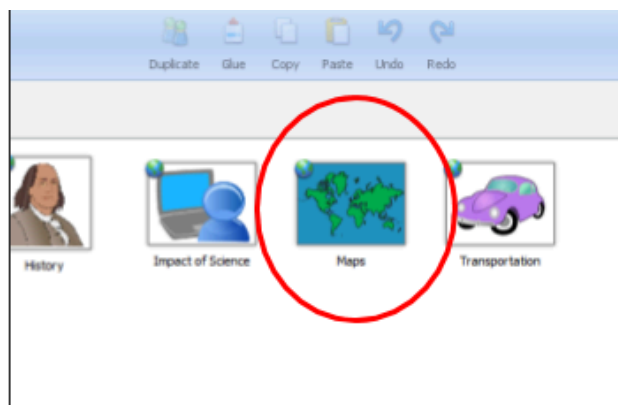
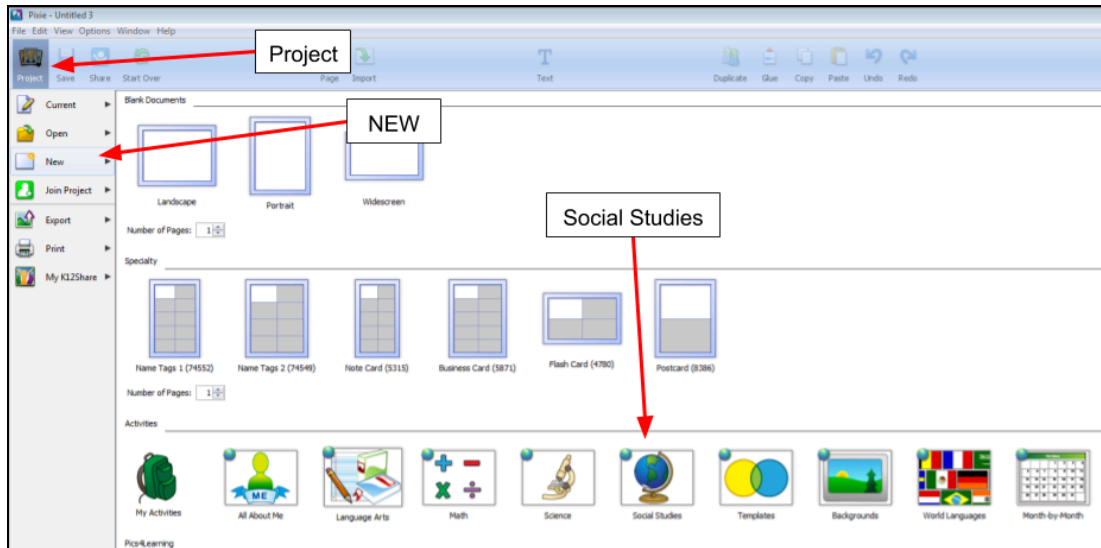
2. Create a Pixie4 presentation about your National Park.

- Today you will create a Pixie project of your national park, but you will use a map template as your background.
 - Hawaii - Volcanoes National Park
 - New Mexico - Carlsbad Caverns
 - Utah - Bryce Canyon
 - Florida - Dry Tortugas

- Follow the steps below to find a state map to go with your National Park.



- If you need to go “Back” when looking through templates,
- Once you find your map, select it, then create your presentation with the map as your background.



- Save your work for Day 2.
 - File → Save As → to Computer → Desktop → Student Work Folder → Label your work as your names (you and your partner together).
- **DO NOT print today!** Wait until the end of the week, and pick your favorite 1 or 2 presentations to print out (each partner can print 2).

3. Write in your journal! Include a picture of your Pixie project, (you can take a picture of the screen with your iPad - Complete Slide 3 (Day 2))

Day 3

1. Choose another National Park to visit and explore today.

- Click on the image below, and click the blue link that pops up.
- Then select one of the other National Parks to explore.
- Watch all of the videos and click all of the links (don't skip) as you explore your National Park.



Questions for Conversation (with your partner):

- What are 3 new things you learned during your National Park Expedition today?

2. Create a Pixie4 presentation about your National Park.

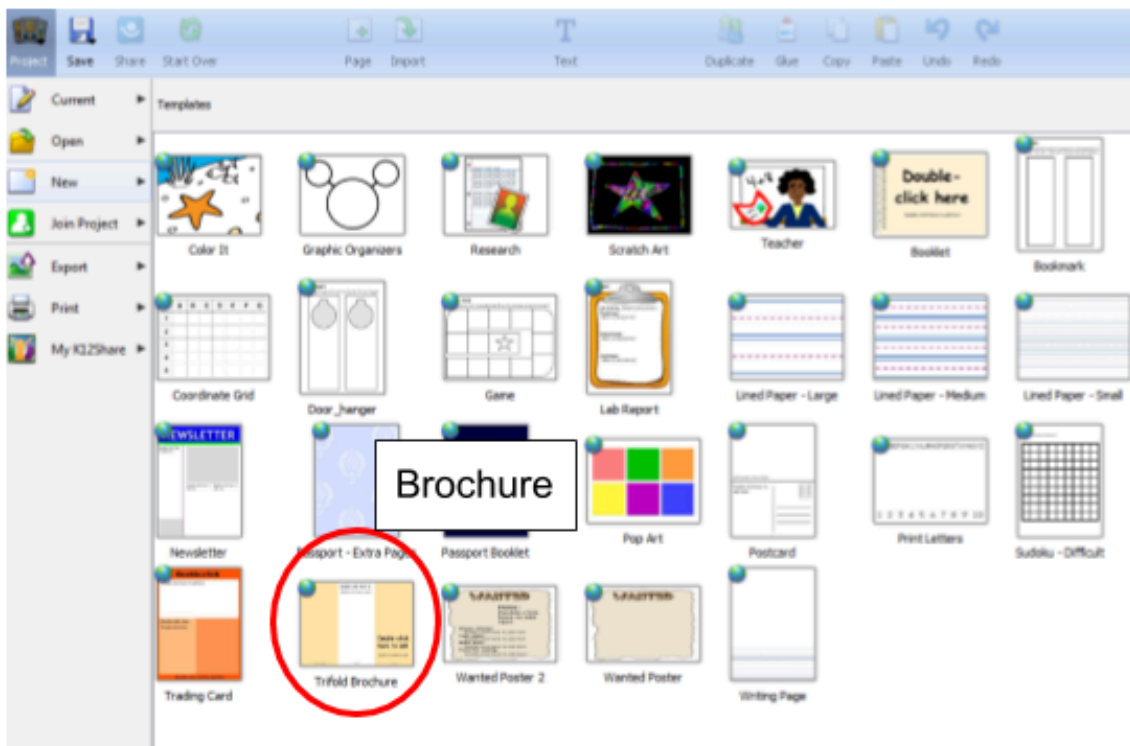
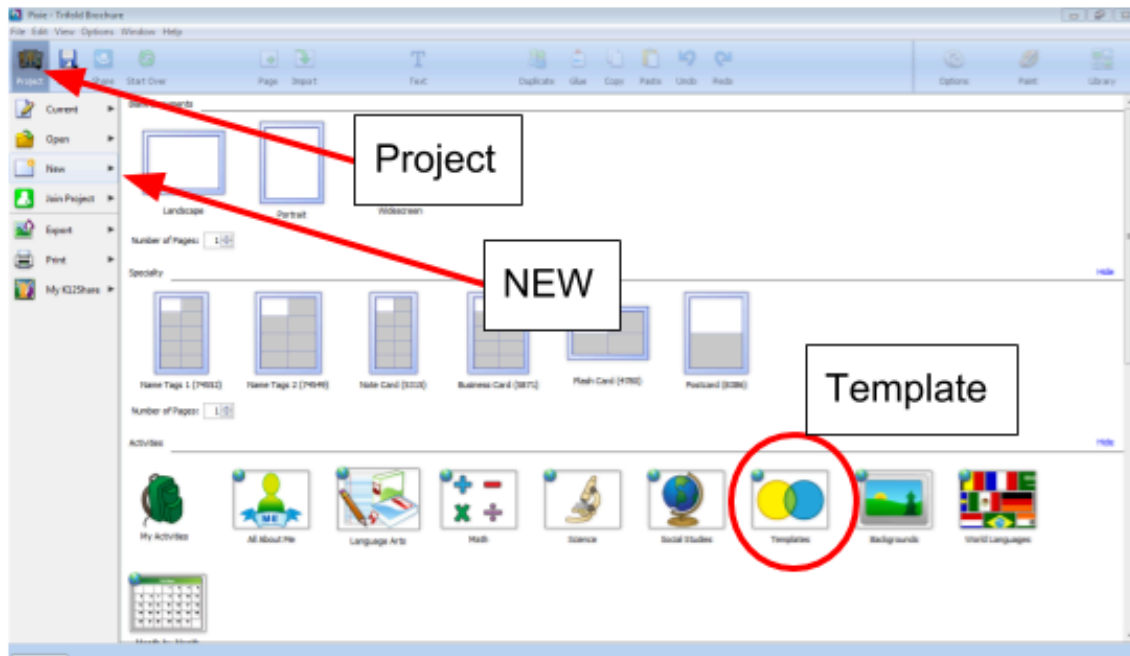
- Today you will create a Pixie tri-fold brochure of your national park, using a template in Pixie. Look at the example below of the brochure for Kenai fjords.

There is a front side of the brochure and a backside of the brochure. You will use pictures from Pixie (in the Library) to fill in your brochure.

 <p>(inside page 1)</p>	<h3>Kenai Fjords, Alaska</h3> <p>Come visit the Kenai Fjords national park in Alaska. You will be amazed by the breathtaking beauty of the glaciers and wild life in this national park.</p> <p>Plan your trip today!</p>  <p>(back)</p>	  <h2>Welcome to Kenai Fjords</h2> <p>Alaska, USA</p> <p>(cover)</p>
--	---	---

  	<h3>Hiking and Kayaking</h3> <p>Hike up a glacier or kayak with humpback whales, as you explore the beauty of Kenai Fjords.</p>  	<h3>Wildlife</h3> <p>Some of the animals you will see include humpback whales, moose, and bald eagles.</p>    
---	---	---

- Follow the steps below to create a trifold brochure for your National Park.
 - Open the Pixie4 program, from the desktop on the computer.
 - Follow the steps below to create your tri-fold brochure.



- Save your work for Day 3.
 - File → Save As → to Computer → Desktop → Student Work Folder → Label your work as your names (you and your partner together).
- **DO NOT print today!** Wait until the end of the week, and pick your favorite 1 or 2 presentations to print out (each partner can print 2).

3. Write in your journal! Include a picture of your Pixie project, (you can take a picture of the screen with your iPad - Complete Slide 4 (Day 3))

Day 4

1. Choose another National Park to visit and explore today.

- Click on the image below, and click the blue link that pops up.
- Then select one of the other National Parks to explore.
- Watch all of the videos and click all of the links (don't skip) as you explore your National Park.



Questions for Conversation (with your partner):

- What are 3 new things you learned during your National Park Expedition today?

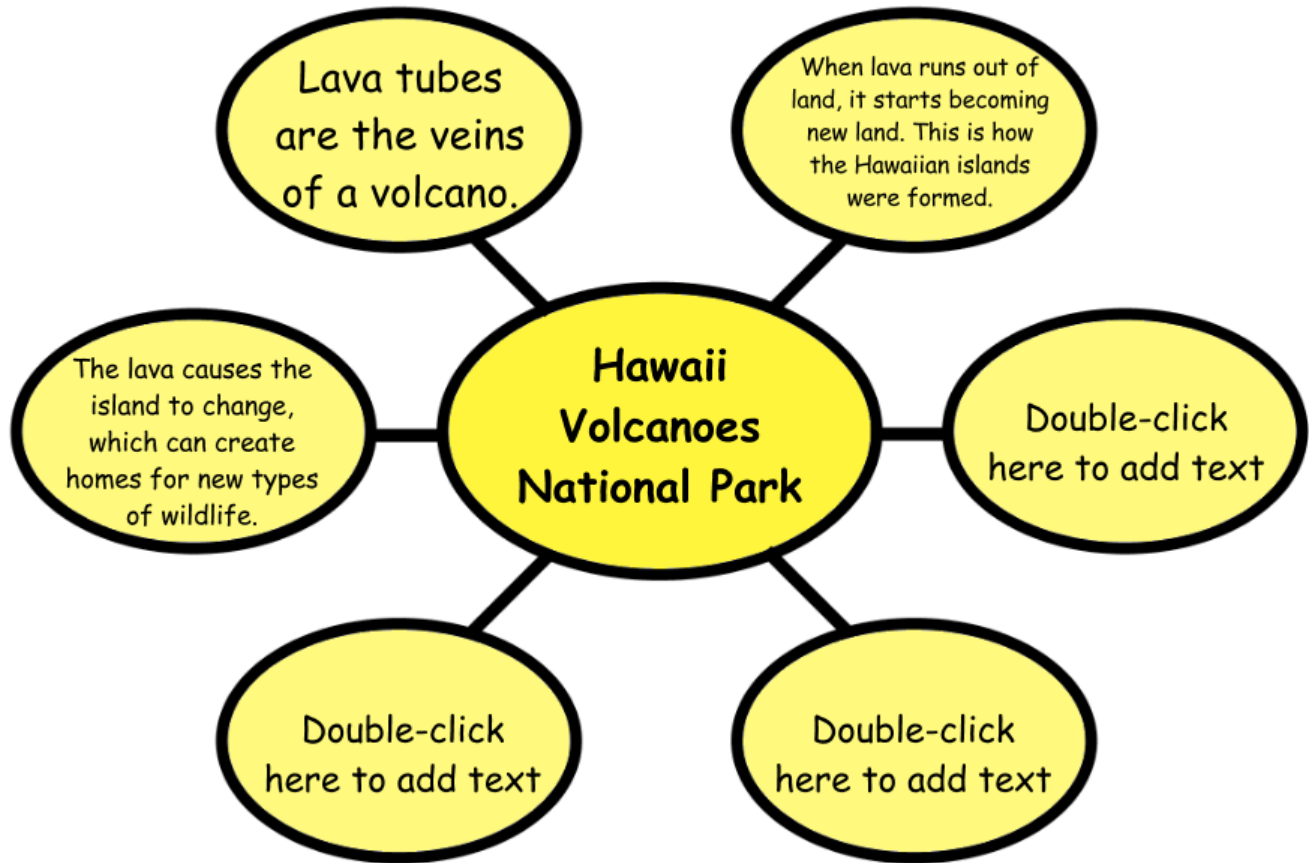
2. Create a Pixie4 presentation about your National Park.

- If you need to finish up your tri-fold brochure from yesterday, please do that first. Locate your saved work in the Student Work folder on the desktop.

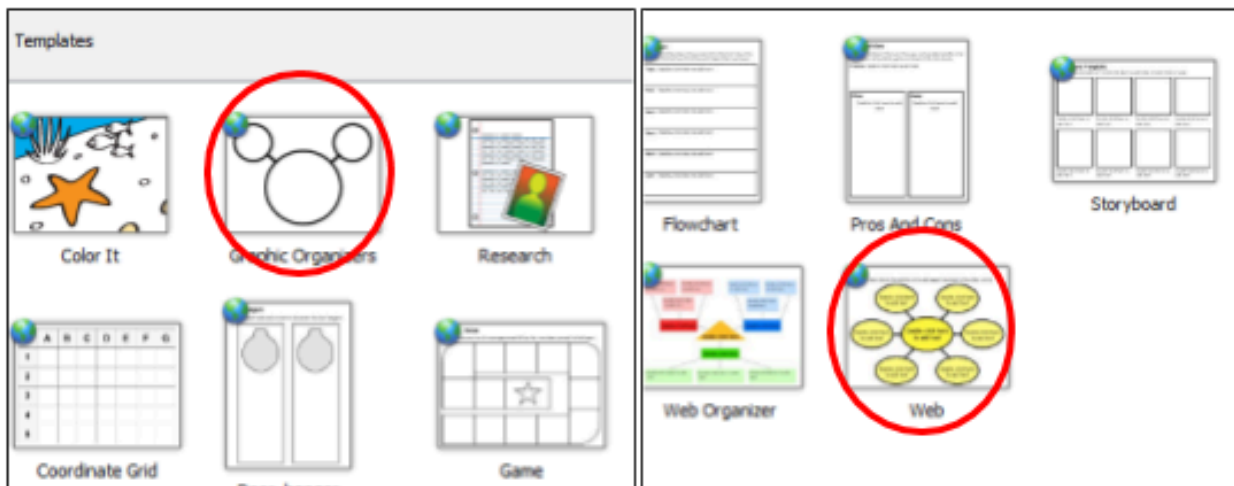
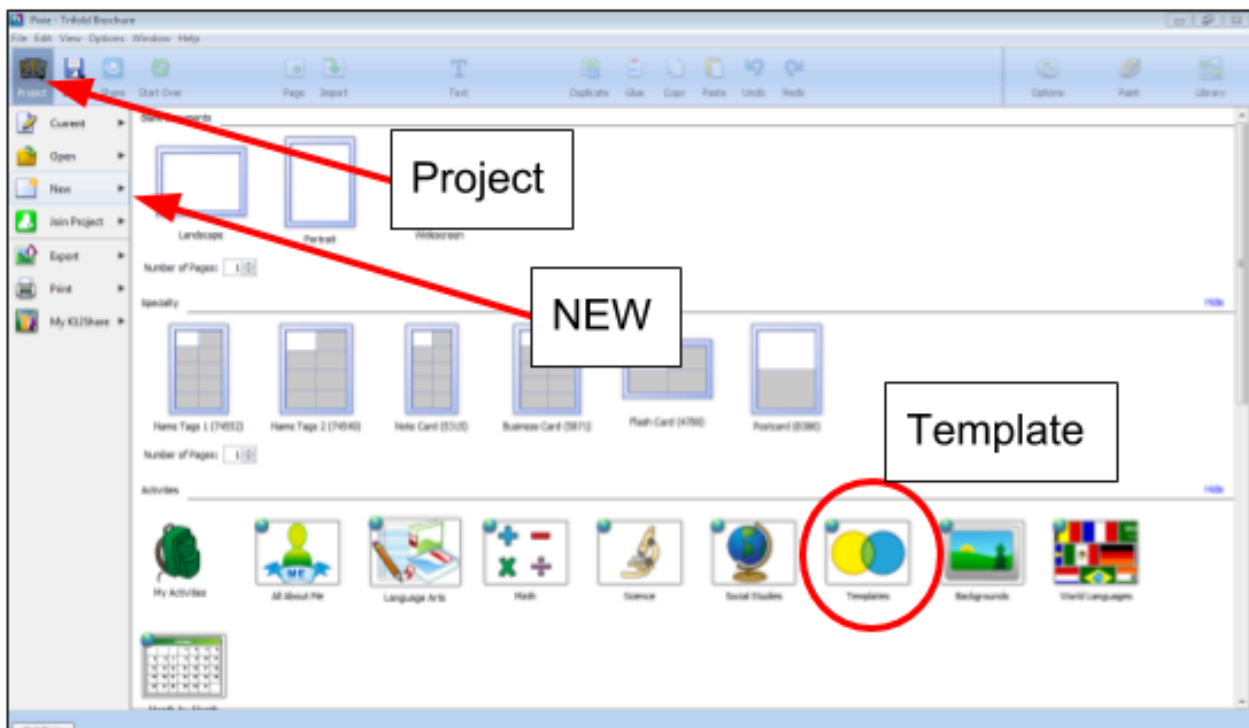
- Today you will create a Pixie web of your national park, using a template in Pixie. Look at the example below of the Web for Hawaii Volcanoes National Park.
- Think about some important information that you learn about during your National Park Expedition. Type some facts about your National Park into the ovals of the Web.

Web

Type your main idea in the middle circle and supporting ideas in the other circles.



- Follow the steps below to create a Web for your National Park.
 - Open the Pixie4 program, from the desktop on the computer.
 - Follow the steps below to create your Web.



3. After you create your Web for your National Park, decide which projects you would like to print out.

- Day 1 - Kenai Fjords Pixie Project
- Day 2 - State Map National Park Pixie Project
- Day 3 - Tri-Fold Brochure National Park Pixie Project
- Day 4 - Web National Park Pixie Project

4. Write in your journal! Include a picture of your Pixie project, (you can take a picture of the screen with your iPad - Complete Slide 3 (Day 2))

- Clean up your area - Computer, Keyboard, Mouse, Headphones, Chairs pushed in!!
- Take any work that you printed out with you.
- Check the floor before leaving.

Turn in your journal through Google Classroom!