



## CAMP SOLES GETAWAY FAQS

### 1. How far away is Camp Soles?

Camp Soles is located in the Laurel Highlands area southeast of Pittsburgh. The Camp is located at 134 Camp Soles Lane in Rockwood, PA 15557 which is approximately ~66 miles and ~ 1 hr. 10-minute drive +/- one-way from downtown Pittsburgh.

**\*Please note, cell phone reception is limited in most areas throughout the camp.**

### 2. Will carpooling be made available?

Closer to the close of event registration, a sign-up sheet will be provided where individuals can coordinate rides, if desired.

### 3. If I register, am I obligated to come the entire weekend?

You are welcome to come for any portion of the weekend - though the registration rate is set low to accommodate a variety of needs and it cannot be adjusted or pro-rated.

### 4. The event starts on Friday yet no meals are provided that day, please confirm?

That is correct. Since attendees will show up at a variety of times, dinner on Friday evening is on you. You are welcome to eat in advance or bring food for yourself and/or others to share. If weather cooperates, there may be a campfire where late night snacks/food could also be prepared.

Registration Fee includes: 4 chef-prepared meals (breakfast, lunch, and dinner on Saturday and breakfast on Sunday) served in the camp's beautiful rustic-lodge-like Dining Hall overlooking Lake Tris.

### 5. I have dietary needs; can they be accommodated?

Yes. We will work with registrants and the Camp Soles chef to accommodate dietary restrictions for the provided meals. Dairy, Soy, Vegetarian, Vegan and Gluten free dietary restrictions can be accommodated. Camp Soles is a nut free facility.

**6. I have not been camping or to a Camp before, what essentials would I need to bring?**

Once registration is near closure, a list of recommended items for packing will be provided. A sign-up sheet for common items and food and beverages will also be made available. Here is a starter list:

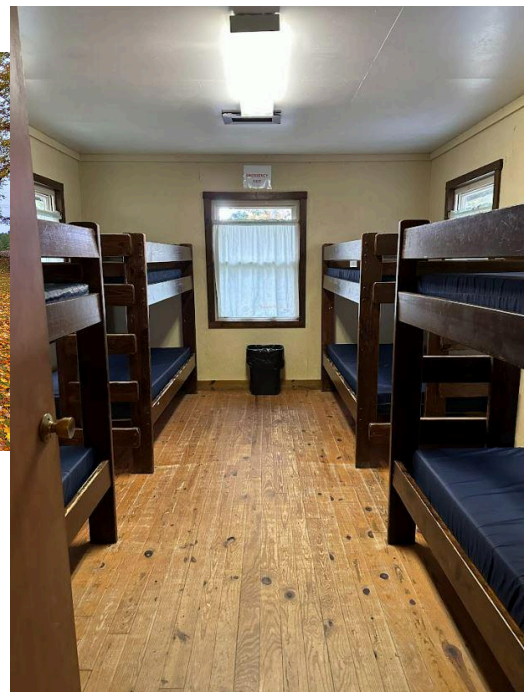
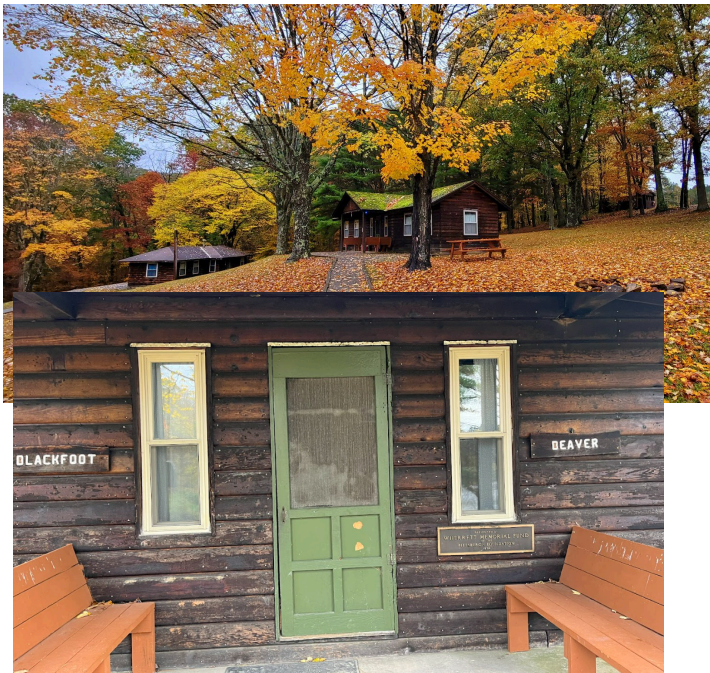
Bedding (twin size foam pad,  
pillow, sheets, blanket, and/or  
sleeping bag)  
Bug Spray  
Toiletries  
Towel(s)  
Shower shoes

Hiking shoes / sneakers  
Camp / outdoor chair  
Flashlight / headlamp  
Water bottle  
Clothing / SWEP t-shirt  
Jacket (Rain / cold)

**7. What are the sleeping arrangements?**

Registrants are anticipated to be housed in Jr. Village which is a group of four duplex cabins. Each duplex cabin has two cabin wings that sleep eight with an entryway and a bathroom in the middle. The bathroom only has one shower, so a bathhouse with male and female showers and bathrooms are provided in the lower level of the dining hall.

The cabins are heated with eight twin-size bunk beds per cabin; four per side/wing. There are enough cabins so that each SWEP camper can sleep on the bottom or top bunk, with the other bunk available for storage i.e. your clothing, toiletries, etc. Those with similar sleep habits may be grouped together. Bring your own bedding: sleeping bag, blanket, pillow, extra twin-size mattress foam topper (for comfort if desired).



### **8. Can I bring my Dog?**

No. Pets are not permitted at camp.

### **9. What happens if it rains or snows?**

We will embrace it. This event will be held rain or shine. A full refund can only be provided up until the cancellation date established at registration. Please refer to our cancellation policy. Otherwise drive safely to/from Camp and have fun. The Camp has plenty of in-door facilities to accommodate a variety of activities during inclement weather. Come prepared for a variety of weather conditions.

### **10. What types of activities will be offered?**

All activities are optional. Most activities are still being planned though they may include canoeing on Lake Tris, hiking the grounds, facilitating yoga, pickleball, board games, climbing the climbing wall, arts n' crafts, etc. Camp instructors are required for certain activities and programs due to insurance purposes. Note: staff-led activities are subject to change day of, based on availability and weather.

Please reach out to SWEP event Chair Lauren Terpak at [terpak@msconsultants.com](mailto:terpak@msconsultants.com) if you have activity recommendations, requests, or are willing to lead/host a group activity.

For 2025, we are locking in details for the return of your favorite yogi Meagan for instructed yoga and another wine tasting from Vin De Matrix wine ...with new vintages [Vin De Matrix Winery: Stellar Wines for Down-To-Earth People](#). More details to come.

### **11. Is alcohol permitted?**

A: Yes. Fridge space may be provided in the lodge kitchen, but it is recommended that you bring your own coolers to keep it in and nearby, if needed.

Note: A separate waiver will be required for signature for those participating in a wine tasting (or similar) event for those who plan to drink alcohol.



**12. Will coffee and or hot water be provided?**

A: Yes, coffee will be available in the lodge, as soon as the chef arrives to prepare breakfast (early before 8AM). Same applies for hot water for other hot drinks like tea.

**13. Will ice be provided?**

A: It is not the responsibility of the Camp to provide ice. If you require ice, please bring it. Coolers with ice should be ok given the predicted overnight temps.

**14. Does the Camp provide everything needed for a campfire?**

A: The Camp will provide the firewood. It is asked once event registration is closed and a sign-up sheet provided, attendees sign-up to bring other items such as fire starters, lighters, newspaper, kindling, etc.

Guests will also be asked to bring “cooking” tools such as pie irons, marshmallow sticks, etc. Signs-up for these items will also be made available once registration closes.

In the case of inclement weather, campfire(s) will be relocated to the Dining Hall fireplace.

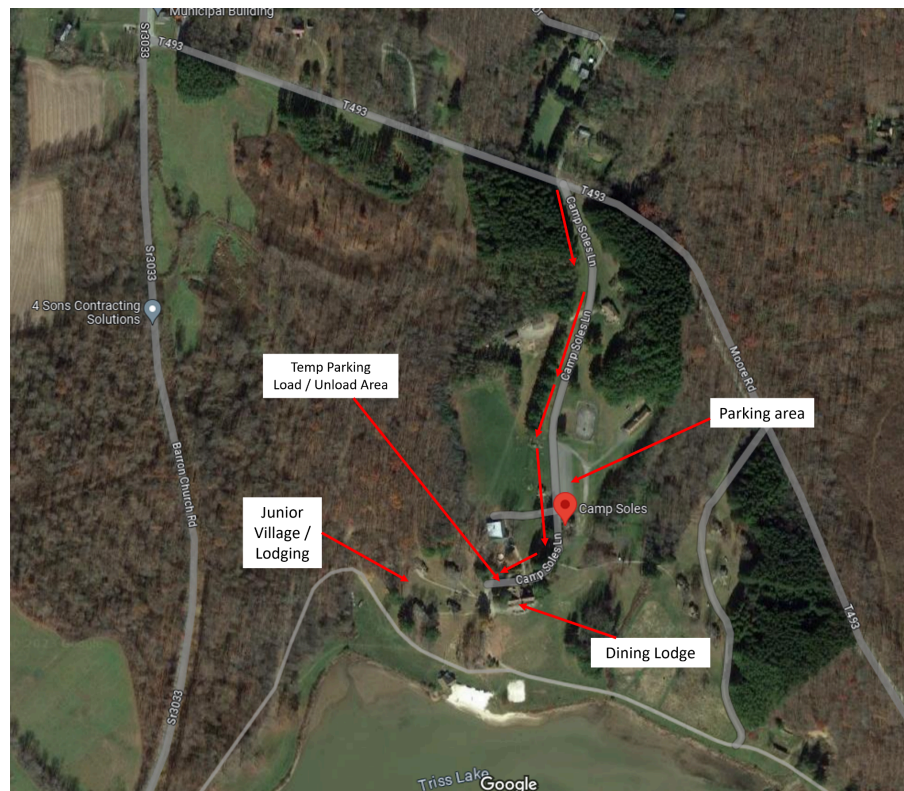


### 15. How will I coordinate with other attendees?

A: Closer to the event date, registrants will be sent an email with a link to a shared google spreadsheet for collaboration. The spreadsheet is anticipated to include tabs for the following: a recommended packing list, food/beverage sign-up, carpool sign-up, an itinerary, wine tasting sign-up, requested info for cabins/sleeping arrangements, etc. It's important you fill out the spreadsheet by the dates specified to allow for time to pick up supplies and to coordinate logistics. It is highly recommended you continually check the spreadsheet as it is a living document and is subject to change up until departure for the event.

### 16. What do I do upon arrival at Camp?

A: **Check in begins at 6pm on Friday.** Please note given the time of year, it's likely you will arrive in the dark. When you pull into Camp and enter a large parking area, there is a Camp Office. You can sign-in there or you will be directed from there to the Dining Hall. Proceed towards the Dining Hall to unload your belongings. You will then be asked to move your car into the large parking area for the remainder of the weekend.



Upon arrival you will be provided a release form for signature, a map of camp, and a list of cabin assignments.

### 17. Release of Liability

All guests must sign a release of liability statement. These statements must be turned in to the camp office or your group leader (Lauren Terpak) by the time of registration on the date in which rental will begin.

Note: A separate waiver will be required for signature for those participating in a wine tasting event (or similar) for those who plan to drink alcohol.



Please submit requests or additional inquiries to [threeriverschapterswep@outlook.com](mailto:threeriverschapterswep@outlook.com)