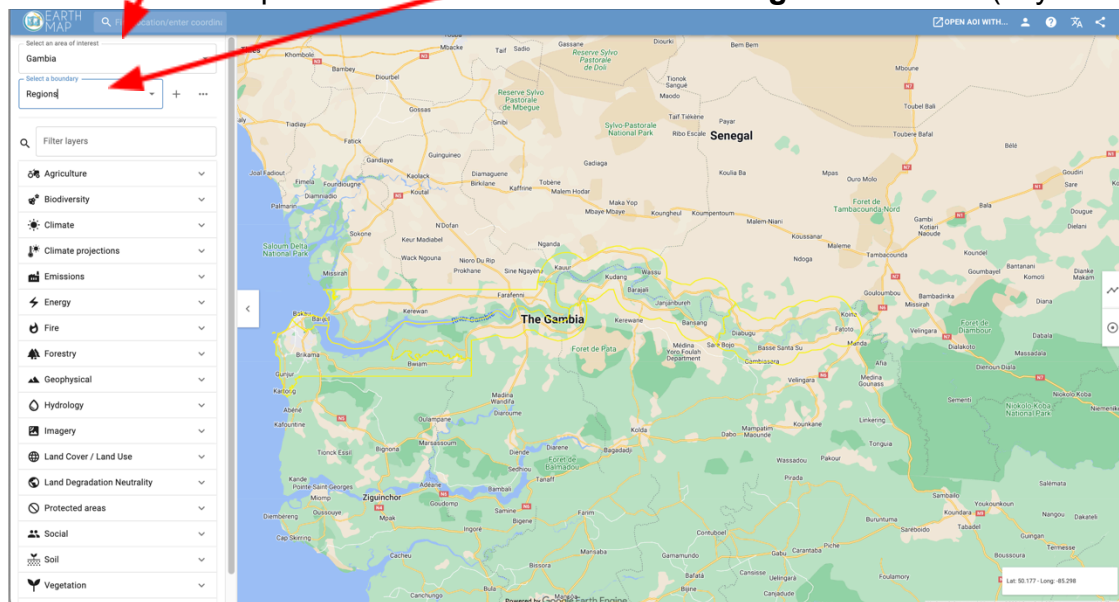


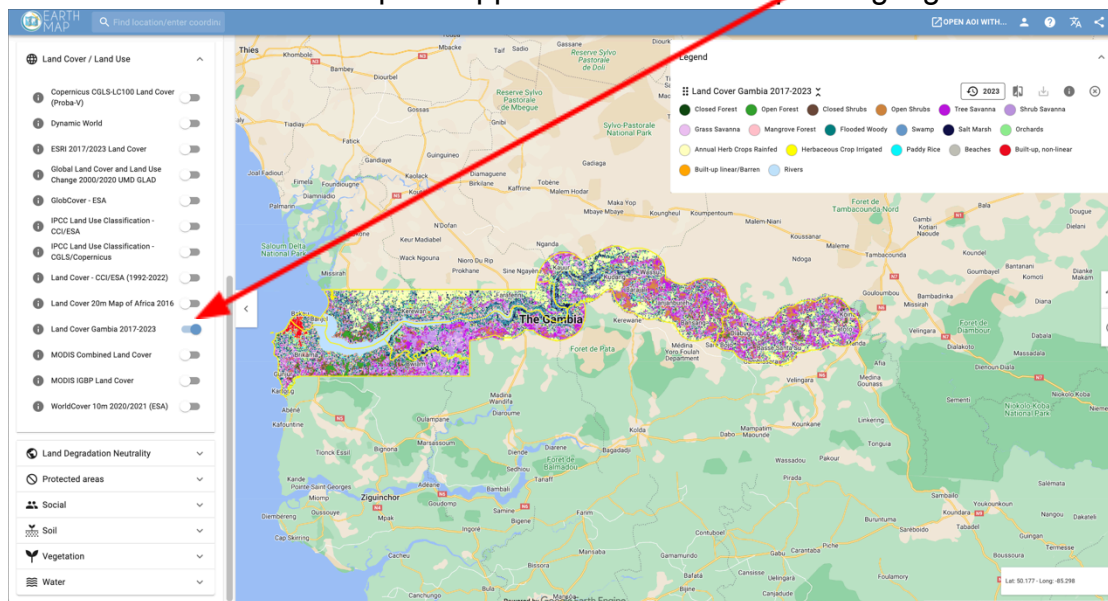
Using EarthMap to produce zonal statistics of the new Land Cover Map of the Gambia for the years 2017-2023

S1. Go to [Earth Map](#) and select **Gambia** in **Select an area of interest** and **Regions** in **Select a boundary**: You will see the map will center around the **Gambia Regions borders** (in yellow)



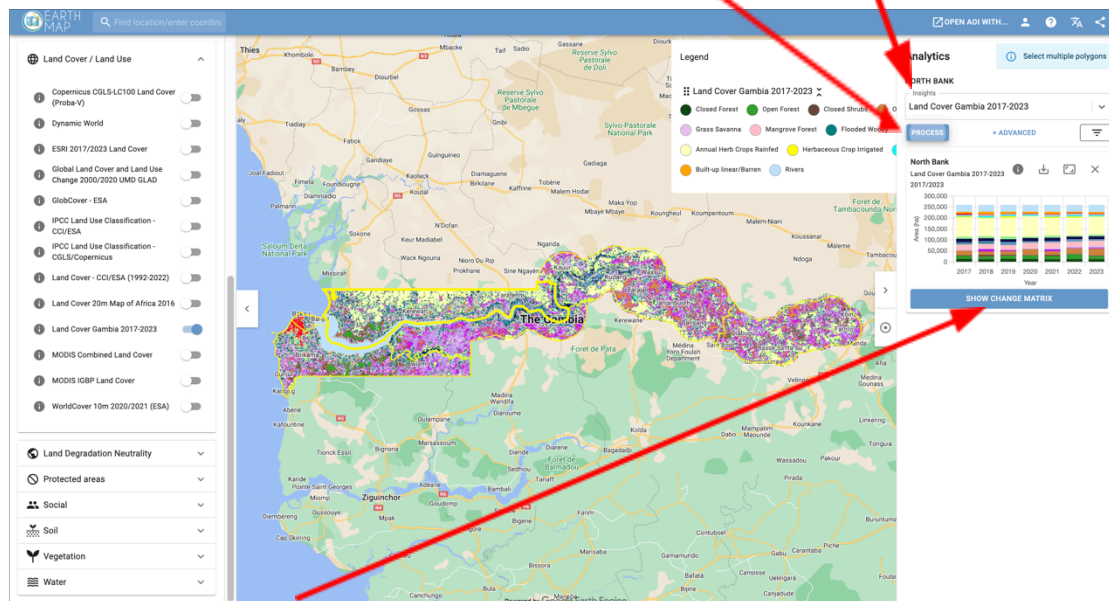
S2. On the left panel on the **Land Cover / Land Use** session check **Land Cover Gambia 2017/2023**:

You will see the new LC map will appear with the corresponding legend:



S3. Select one region on the map by clicking on it (in this case we clicked on **NORTH BANK**). Then open the Analytics panel and in **Insights** find **Land Cover Gambia 2017/2023** . Finally click on **Process** to visualise the statistics for the selected region.

You can download them as PNG or CSV file.



Click on **SHOW CHANGE MATRIX** to visualize and download it:

