

Kingswells



Information for Nursery Parents

Updated June 2024

KINGSWELLS SCHOOL AND NURSERY

Meet our SLT



Mrs Moira Maciver
Head Teacher



Mrs Dionne Cran
Depute Head Teacher



Mrs Kay McAra
Depute Head Teacher
Head Teacher - Friday



Mrs Claire McKelch
Depute Head Teacher



Miss Shelley Donaldson
Senior Early Years Practitioner



Mrs Chloe Adam
Early Years Practitioner



Mrs Lorraine Mitchell
Early Years Practitioner



Mrs Otilia Zsaki
Early Years Practitioner

Welcome to Kingswells School



Welcome

Welcome to Kingswells School Nursery. Your child is special and we strive to make his / her time at nursery a happy one. We aim for our nursery to be a friendly place where you and your child feel welcome. We share the responsibility for your child's development and hope we can work together to give an exciting, stimulating and happy environment for them to learn in.

Our Nursery is an integral part of Kingswells School but the provision it provides is different from the school. This booklet has been produced to provide you with information about the aims and general organisation of our nursery. The school handbook, containing information relating to the whole school, can be found on our website. <https://sites.google.com/ab-ed.org/kingswellsschool/home>



Classes:

Kingswells Nursery has one class which caters for up to 40 children aged 3-5 years at any one time.

Nursery Session: 9am – 3pm

Kingswells School Nursery delivers a 36-week term-time model. Parents are given the flexibility to drop off and pick up at times which suit their needs during the nursery session. Children can attend the nursery 1 – 5 sessions per week. It is helpful if children arrive by 9.30am. We ask that all parents arrive to pick up by 2.45pm for a 3pm end to the day for children.

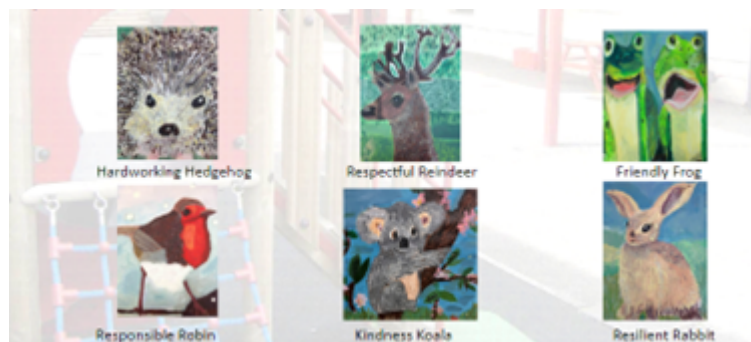
Nursery and school closures can be found here [View school term and holiday dates | Aberdeen City Council](#)

Kingswells School Vision

Within our inclusive school community, we empower our learners to be **creative**, **adaptable** and **innovative**. In **exploring new horizons** and **solving problems**, they will develop the **curiosity** and **resilience** to achieve success in our dynamic future.

Kingswells School Aims

We aspire to have learners with a growth mindset who believe in themselves. Through promoting a culture of belonging they will be able to celebrate differences and be truly inclusive. In providing teaching and support of the highest quality, we enjoy an environment where children are happy, safe, motivated to learn together and embody our [school values](#).



Clothing and Other Equipment

Please help us by dressing your children in clothes which they can cope with independently. It is best to avoid laces, belts and buttons if children can't yet do these themselves.

Children will require the following items which must be **clearly named**:

- A nursery bag with a complete change of clothes. These bags should be taken to and from nursery each day and not left overnight.
- Indoor shoes for wearing in the nursery.
- Waterproof jacket, trousers and wellies for outdoor play in **all** weathers.
- Appropriate seasonal clothing to support outdoor learning - A sun hat and sun glasses for good weather. Hat, scarf, gloves and a warm coat for very cold days.

Children should not wear jewelry to nursery.

We encourage messy play both inside and out and ask parents to be mindful of this when dressing children for the nursery session. It is highly likely that clothes will get muddy or painty at some point despite aprons being provided.

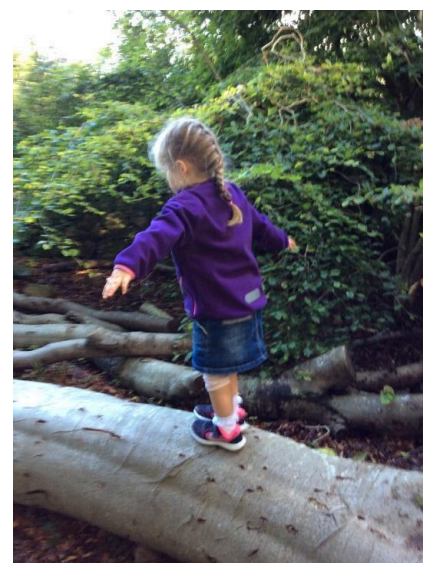
We have a nursery t-shirt, jumper and hoodie which we encourage all pupils to wear. These can be ordered directly from WCS Scotland (The Dugout) at 687 George Street, Aberdeen, AB25 3XP. Tel 01224 692850 or [Kingswells Archives - The Dugout](#)



Health

At your first one hour visit to nursery you will complete a Care Plan with our Senior Early Years Practitioner to share information about your child with us. This will inform us of any health problems - hearing, sight, allergies etc. It may also be necessary to give more details either in writing or verbally to support your child if he or she has significant needs. You will also be asked to complete a dietary requirements form which will filter the lunch options available for your son/daughter.

An unwell child must be kept at home until they feel well enough to return to nursery. Please telephone to let us know if your child is going to be absent. If you do not contact the Nursery/School, the school office will then contact you to check that everything is all right.



If your child requires medication during the session please consult with nursery staff. Medication consent forms can be found within our [Medication Policy - Google Docs](#) on the school website.

Children who have been absent with symptoms of stomach bugs, sickness or diarrhea can return to nursery 48 hours after the last episode of sickness or diarrhea and when they feel well enough to return.

If your child has attended Speech Therapy before coming to Nursery, please tell us. A health visitor is the 'Named Person' for all children below school age. Whilst the parent or carer is usually the first person we talk to about any concerns we work in close partnership with health visitors to support the needs of the children in our care. If we feel your child might benefit from speech therapy or other medical support we will discuss this with you and contact your health visitor to make any NHS referrals.

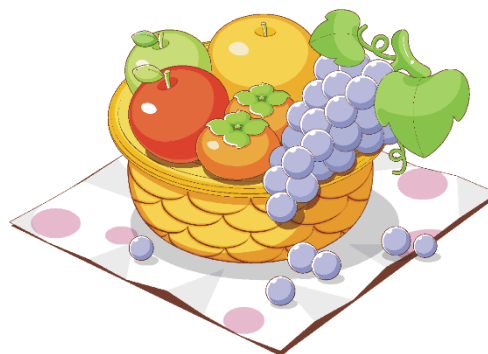
Food in nursery

We have a light morning and afternoon snack which includes fruit to eat and a drink of either milk or water.

Lunch is made in our school kitchen by catering staff and served in nursery around 11.30am. The nursery lunch menu can be viewed at [View school meals menu | Aberdeen City Council](#) We ask that parents preorder lunches via Parent Pay which you will be sent login details for when your child starts at our nursery.

Nursery is free at the point of service and there is no charge for snack or lunches.

Please let us know of any special dietary needs arising from medical or religious reasons.



Safety

We work in partnership with nursery families and staff to ensure our Nursery is a safe environment for children and adults, we need your co-operation in this.



- Children must be accompanied to and from Nursery by a responsible adult, **i.e. someone over 16 years of age.**
- Adults accompanying children to and from Nursery should sign the child in and out of Nursery with a member of staff on the iPad or paper register.
- Please let staff know if you have arranged for someone new to our nursery to collect your child. If something happens and you need to send somebody other than the person named on the sheet to collect your child you must phone the nursery to inform us.
- Please ensure that your child stays by your side when approaching and leaving the Nursery.

The car park is for staff and visitors cars only. Children should not be in the car park under any circumstances.

Parents are not permitted to use the school car park for drop off or collection. We have 2 disabled bays that can be used by anyone who displays the appropriate badge.



Dogs are not permitted on school grounds.

Phased Entry

Aberdeen City Council policy advocates that children will be phased into Nursery in small groups, over a short period of time.

Although your child may have attended other pre-school establishments, it is important for us to introduce the children into Nursery in a sensitive and thoughtful way. The staff want to get to know your child as an individual and give them as much attention as possible. This will allow your child to become confident in Nursery routines and to establish a relationship with the staff.

Communication

Effective communication is important to help overcome any anxieties you or your child may have. At Nursery, the adult bringing the child to and from nursery will, of course, have daily contact with the staff and ample opportunity for discussion. However, if you feel more time or privacy is needed, you are welcome to make an appointment.

It is also helpful to share with staff any problems out with Nursery which may be causing your child stress, for example, change of family circumstances. In this way we can help your child to cope should he/she become unsettled and understand any changes in behaviour.

Nursery Curriculum

Young children come to nursery with a significant background of learning experiences and a natural curiosity. The nursery builds on this by broadening the range of children's learning experiences through its curriculum. The Nursery works towards achieving the experiences and outcomes from the Curriculum for Excellence.

www.curriculumforexcellencescotland.gov.uk

These are detailed in eight Curriculum areas:

Numeracy & Mathematics

Literacy & English

Health & Wellbeing

Social Studies

Sciences

Technologies

Religious & Moral Education

Expressive Arts

We will explain more about Curriculum for Excellence at our induction meeting. You are welcome to ask the nursery staff any questions you may have or to read information posters around nursery.

Play

"Play is essential for our children if they are to have the best start in life and be ready to succeed as adults. Through play children thrive as they develop self-confidence, social skills and awareness of their impact on others and the world around them."
The Early Years Framework (2008)



Children develop their knowledge and understanding of the curricular areas through a variety of adult initiated or led activities and free play. The importance of the development of early literacy and numeracy is encouraged and planned for primarily through play. During their play children can communicate their thoughts and feelings to each other and the Nursery team.

Early Literacy

Literacy skills are vital for learning. Some activities to promote this are:


- Sharing a story; reading them, retelling them and making up new ones.
- Looking at books for enjoyment.
- Singing nursery rhymes and listening for words that rhyme.
- Recognition of own name or other familiar words in the environment.
- Hearing the first sound of own name and matching it to other names and words. Emphasis on sound/phonics rather than letter name.
- Writing own name on drawings, even if it is just a squiggly line or shapes.
- Drawings and then talking about what is in the picture.
- Playing with Puppets.
- Opportunities to develop fine motor control.



Early Numeracy

Early Numeracy skills are an important part of learning:

We provide opportunities for development in this area through:

- Singing songs about number stories e.g 5 Little Speckled Frogs.
 - Encouraging the use of mathematical language in play at the water, sand and mud kitchen around volume e.g. a half full jug, an empty bottle etc.
 - Shape work.
 - Providing materials to promote measuring in role play and construction areas.
 - Using money in role play.
 - Taking part in cooking and baking activities to learn about weight and time.
 - Sorting and matching games.
 - Displaying numbers and number games/puzzles to support number recognition and order.
 - And lots more!
- 
- A photograph of a young girl with dark hair, wearing a light blue zip-up jacket, standing behind a wooden table. She has her arms raised in the air and a joyful expression. On the table in front of her are several colorful geometric shapes: a yellow circle, a red rectangle, a purple square, a green circle, and an orange rectangle. The background shows a typical classroom or playroom setting with shelves and other toys.



□ Children can use a variety of materials to **measure**.

“How long is the caterpillar?”

"Is it longer than the ribbon or shorter than the ribbon"

□ Children can recognize and name **shapes**.

□ Activities can be used to talk about **positional language**.

"I know where to put the teddy"

on the chair

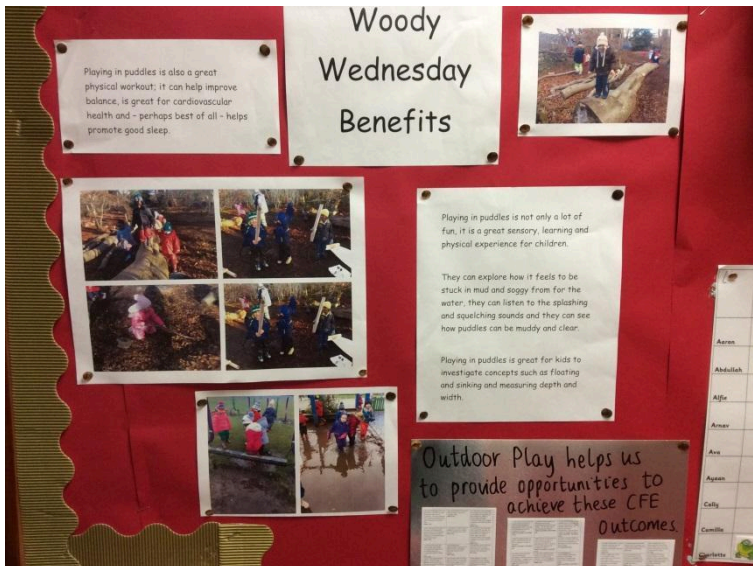
under the chair

beside the chair.

Health and Wellbeing

Developing children's awareness and understanding of how to look after themselves is essential.

- ◆ Children will have opportunities to play indoors and outdoors and to develop their co-ordination and body control.
- ◆ Energetic play encourages good health and fitness.
- ◆ They can try and taste a range of different foods, whilst learning how to make healthy choices.
- ◆ Building with construction materials, working with tools and playing with puzzles promotes good hand-eye co-ordination.
- ◆ Opportunities for outdoor play involving climbing, pushing, pulling, sliding and cycling develops gross motor control.
- ◆ Activities to explore emotional health such as recognizing feelings and discussing ways to solve problems.



Partnership with parents

We welcome your help in Nursery. Please let a member of staff know if you would like to help in nursery or in a P1-7 class on a regular basis. All parents who are helping in school or nursery require a PVG and to complete some short training videos.

The nursery team will contact you when it is your child's Focus Child week. They will ask for some information about interests and skills at home and follow this up in nursery with close observation of learning. At the end of this week you will be invited to join your child in nursery for a Stay and Play session where you can see their learning in actions and chat with their key worker. This replaces parents evening for nursery children.

Information on your child's progress

Throughout the session the staff will be observing your child at play. This observation helps them to plan on how best to support and meet the needs of your child's development. Each child will have a Seesaw account where a record of his/her development and significant achievements will be recorded. You will be given information on how you can sign in from home to access your child's Seesaw account. We welcome input from parents regarding milestones and achievements from home too.

Insurance

No insurance cover is held by Aberdeen City Council to provide automatic compensation in the event of a personal accident or death. It is your responsibility to insure your child for personal accident or death if you feel this is appropriate.

Aberdeen City Council hold Third Party liability Insurance which indemnifies the City for claims for Third Parties (e.g. parents of pupils) who have suffered injury, illness, loss or damage arising from the negligence of the city or its employees. However, if there is no negligence no claim would be accepted by the City.

In line with A.C.C. policy, when completing admission forms, parents will be requested to complete an insurance form so that the school has written acknowledgement that parents have received the above statement.

Child Protection

Schools are required to report if we think that any child may come to harm as a consequence of possible abuse or neglect. Each school has a named senior member of staff appointed to be responsible for Child Protection matters. In Kingswells School the Child Protection Officer is the Head Teacher. Should you wish to talk further about Child Protection and the safety of your children please feel free to contact her.

Where there is a possibility that a child could be at risk of abuse or neglect, the school is required to refer the child to Social Work, the Police or the Reporter and under these circumstances, parents would not normally be consulted first.

If you have a concern about the safety of a child you should contact the Joint Child Protection Team on 0800 7315520. If you have significant, immediate concerns you should call 999 or 101.

Complaints Procedure

Aberdeen City Council has a clear policy on customer commitment to 'ensure the well-being of the people and environment of Aberdeen'.

If you have a query or a problem which you feel has not been reasonably addressed by the nursery staff, please in the first instance contact the Depute Head Teacher or the Head Teacher. If you feel the query or problem has still not been reasonably dealt with, please

contact:

Early Years Team

Education & Children's Services

Aberdeen City Council

Marischal College

Broad Street

ABERDEEN

AB10 1AB

Tel.: 01224 764654

The Care Inspectorate

Social Care and Social Work

Improvements, Compass House

Dundee

DD1 4NY

Tel.: 0345 6009527

We hope you enjoy Kingswells Nursery



Kingswells Primary School
Kingswells Avenue
Kingswells
ABERDEEN
AB15 8TG



Tel: 01224 740262

Email: Kingswells@aberdeencity.gov.uk

Website: <https://sites.google.com/ab-ed.org/kingswellsschool/home>

School Information Line: 08700541999 Pin Code:011440

Website: <https://kingswells.aberdeen.sch.uk/>

You can find the school handbook, schools information line, information regarding uniform ordering and name labels on this site.