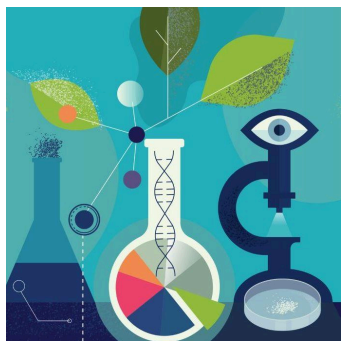




Chemistry in the Community (ChemCom)

Course Syllabus 2024-2025



**"IF YOU WANT TO MAKE AN APPLE PIE TRULY FROM SCRATCH YOU MUST
FIRST INVENT THE UNIVERSE"
CARL SAGAN, ASTRONOMER**

Jennifer Heck: jheck@bisd303.org
Phone: (206) 780-1853
Room 509

Materials Needed: Dedicated 1 inch binder

Google Classroom Codes - Ms. Heck will share
the code in class the first week of school

[Weekly Bell Schedule \(EHHS & BHS\)](#)
[2024-25 District Calendar](#)

Course Information

Welcome to ChemCom, or Chemistry in the Community. This course utilizes an approach which emphasizes various issues in science involving chemistry and technology as they relate to society. It is designed as a chemistry course for students who are not necessarily planning to ultimately major in science or have a science related career. Chemistry principles are introduced as needed to help students understand central issues. Though math is de-emphasized it is still a component of the class. We will be taking an environmental and applied approach to chemistry in this course. ChemCom acts as a springboard for greater interest in other science courses such as environmental science, forensics, and marine biology to name only a few. Topics covered in this course may include water chemistry, materials and compounds, petroleum chemistry, air and gas chemistry, industrial applied chemistry, atomic chemistry, and basic biochemistry.

Format

This course is designed for students to be able to access all content and activities during assigned class time and by using Google Classroom.

For the current general schedule, please see the [BHS/EHHS schedule here](#). You are expected to be fully present, engaged in learning activities, and to submit assignments related to this class during class time.

Course Site

Assignments will be posted and submitted via each class period's Google Classroom or by handing assignments in during class. Students must [join their class period's Google Classrooms](#) to access learning

activities and other important information. An invitation with class codes to Google Classroom will be sent to your frogrock email or given out the first week of school.

If parents & guardians wish to receive the weekly [Google Classroom summaries](#) for their students, please send one of their teachers an email request within the first week. If you have received these emails before, you should not need to take action, you are already registered as their guardian.

Learning Objectives

Each unit of study for this course will have clearly defined learning standards; students are expected to commit themselves to master these standards to the best of their ability. These learning standards will be interspersed throughout the unit and will be made clear. Students will have several opportunities to self assess their progress towards meeting them.

Learning Resources

More tools may be used in class, such as, Pivot Interactives, Quizlet, Kahoot, HHMI biointeractive and PhET interactives. Students will be instructed on how to use these tools. All assignments will be posted on Google Classroom, which students should check daily.

Policies & Procedures

Attendance and Engagement are key to success in this classroom. Daily, on-time attendance is expected of all students, as is full engagement in the instruction and activities that have been designed to support your learning.

Please note that make-up work is not an equal substitute for onsite instruction and interaction with peers in the learning environment, and will not be offered for unexcused absences or truancy.

Entering and Leaving the Classroom

In this classroom, the learning begins and ends with the classroom bell. It is the expectation that students are in the classroom and ready to learn when the beginning bell rings. You are also expected to remain in the classroom throughout the class period with the exception of emergency breaks or scheduled appointments.

If you are tardy, go to class as quickly as possible, and enter in a way that honors the learning in progress: you should enter quickly and quietly, with the least disruption and the most respect for your teachers and peers. You should also have a pass or tardy slip from a teacher/administrator or the Front Office.

If you need an unexpected and unavoidable break, sign out of class using the method described by your teacher, following these guidelines

- One student may be out at a time
- Sign out will only be available during independent work time and not when the teacher is giving directions or lecturing
- Make sure to leave your cellphone in the classroom, as any phones in the hallway/restrooms may be confiscated.

Note that failure to use the hall pass system, excessively long tardies or classroom absences, or leaving the classroom without permission for reasons other than the stated purpose will result in a “missing partial class” (MPC) attendance designation and possible disciplinary action.

Academic Honesty

Integrity is the quality of being honest and having strong moral principles. Academic integrity is a compelling principle by which we operate all aspects of student and school life, and is highly valued at EHHS. Students should not cheat or plagiarize, nor should they tolerate such among fellow students. Students do not receive credit for work that is not their own. Cheating is defined as an attempt to earn credit or receive a grade for coursework in a manner other than defined as acceptable by the teacher. Plagiarism is the taking of language, ideas or thoughts from another person or resource without acknowledging the source. Students who use plagiarized papers or projects or are involved in any other form of cheating will be subject to reduction in grades and/or disciplinary action for a first offense. Because of the serious nature of academic integrity, violations of this code may result in loss of credit for the assignment with a recorded failing grade. It may also entail loss of credit for the course with a recorded failing grade, removal from the course with a failing grade, and/ or additional appropriate disciplinary action. (BISD Student Handbook)

Communications and Self-Advocacy

Students need to be comfortable advocating for themselves. If you have questions or concerns, please email your teacher and/or counselor. We cannot help you unless we know what you need.

Grading

Coursework 10%: This category includes in-class activities, homework, and binder checks. Homework is graded on completion and mistakes are expected to be corrected in order to gain a better understanding of the material.

Mastery of Standards 90%

ChemCom standards assessments will include multiple-choice, short answer, diagramming, projects, among others, depending on the concepts learned in each unit. There will be a cumulative assessment at the conclusion of each semester/unit. Students will create a study guide before each assessment. Reassessments are available.

We will be using Standards Based Grading but are still required to convert the grade to a traditional scale.

4-point scale	Correlating letter grade	Description
4	A	Exemplary work. Mastery. Exceeds grade-level standard.
3	B	Proficient work. Accomplished. Meets grade-level standard.
2	C	Emerging work. Developing. Approaching standard.
1	D	Insufficient work. Basic. Below standard.
0	F	No evidence of work. Missing. Well below standard.

Letter grades are calculated using the following grading scale using Standards Based Grading:

Grade	Mark	Description	High	Low
A	A	A	100.00%	93.00%
A-	A-	A-	92.99%	90.00%
B+	B+	B+	89.99%	87.00%
B	B	B	86.99%	83.00%
B-	B-	B-	82.99%	80.00%

C+	C+	79.99%	77.00%
C	C	76.99%	73.00%
C-	C-	72.99%	70.00%
D+	D+	69.99%	67.00%
D	D	66.99%	60.00%
F	F	59.99%	0.00%

Submitting Assignments

- **Turning in work:** Any numbered assignments listed under the **Classwork** tab in Google Classroom should be submitted by the due date according to the listed instructions.
- **Late Work:** Students are expected to check our Google Classrooms for homework assignments and links to useful resources. All assignments should be turned in on time according to the due date on Google classroom. An absence does not excuse you from the daily expectations and activities of the class. If you are sick, email me to let me know. We will negotiate an appropriate due date.
- **Resubmissions:** Practice of Standards work may not be resubmitted. Any graded assignment in the Mastery of Standards category may be reassessed pending teacher approval and must be done within a two week period from when the assessment is returned. Please make an appointment to go over any standard that you need more clarification on prior to an assessment.

Lab Safety

Lab safety is extremely important and guidelines must be followed. Any student caught violating the safety rules for the science class will not be allowed to participate in certain lab activities for the remainder of the semester and will be required to complete supplemental work for all subsequent labs. A safety lecture and examination will be conducted during the first week of the school year. Students are expected to get 100% on this examination to participate in lab activities. A safety lecture will accompany all laboratory activities. If you are not present for safety instruction, for the safety of all concerned, you will not be permitted to participate in the lab portion in which safety is a concern.

[Safety Contract Link](#)

Technology

- To fully participate in this course, you will need to have access to your BISD chromebook or a similar device every day in class and sometimes at home. Your device must be charged daily and in full working order, with a functional camera, speaker and microphone.
- For tech support, please go to https://bisd303.org/25646_3 and report your issue. This includes getting help to troubleshoot your device and setup at home.

AI

Collaboration with ChatGPT or other AI composition software is permitted in this course with appropriate documentation of how it was used and for what purpose.