

RETURN TO LEARNING PLANS

East Grand Rapids Public Schools

Released July 24, 2020

Updated August 7, 2020

Updated October 8, 2020



TABLE OF CONTENTS

Clicking on an item in the table of contents, links one to that section of the document.

RETURN TO SCHOOL PLANNING	3
OVERVIEW OF EGRPS LEARNING MODELS	5
GRADES K-5 IN-PERSON COHORT LEARNING	7
GRADES 6-12 HYBRID IN-PERSON LEARNING	9
GRADES 6-12 FULL IN-PERSON LEARNING	11
K-5 PIONEER VIRTUAL - ALL ONLINE - EGRPS TEACHERS	13
6-12 PIONEER VIRTUAL - ALL ONLINE - EGRPS TEACHERS - HYBRID+	14
K-12 PIONEER VIRTUAL - ALL ONLINE - PEARSON/MI	15
VIRTUAL TEACHERS	15
K-12 E-LEARNING DAYS	20
WEEKLY SCHEDULES	24
Elementary Schedules Beginning Week #4: September 14-18 Forward	30
Middle School Schedules Beginning Week #4: Sept. 14-18 Forward	30
High School Schedules Beginning Week #4: Sept. 14-18 Forward	34
SPECIAL POPULATIONS	38
HEALTH & SAFETY	40
Overview of Protocols	40
Personal Protective Equipment (PPE)	42
Face Coverings	42
Cleaning & Disinfecting	43
Screening for COVID-19 Symptoms	44
COVID-19 Protocols	44
SOCIAL EMOTIONAL HEALTH & WELLNESS	45
TECHNOLOGY & CONNECTIVITY	46
FOOD SERVICE	49
TRANSPORTATION	52
OTHER CONSIDERATIONS	53

RETURN TO SCHOOL PLANNING

Development, Feedback, & Implementation

In May of 2020, EGRPS created a Return to Learning Work Group composed of district and school level leaders to gather, prioritize, and expedite information on COVID-19 health and safety guidelines, and teaching and learning, and to develop recommendations for reopening schools. Several principles guided the work of the group.

- Safe learning and working environments for students and staff
- High-quality, rigorous instruction
- Family choice of learning models
- Social-emotional well-being & academic progress for ALL students
- Compliance with requirements and guidance
- Clear, consistent and accurate communications

The group was charged with developing specific action plans to address three possible scenarios:

1. In-school learning with health and social distancing protocols
2. Intermittent remote learning model in case of closure
3. Full-time online learning by parent/guardian request

After developing draft action plans for reopening, the work group sought feedback from a diverse set of stakeholders. The following stakeholder perspectives were gathered to ensure a range of community, staff, and student needs and perspectives were considered in the development of the action plan.

- Support Staff and the EGR Association of Support Services Employees
- Teachers and the EGR Education Association
- Students
- Parent representatives from the EGRPS Parent Teacher Organizations & Booster groups
- EGRPS Board of Education members
- Staff from the Kent County Health Department and Spectrum Health Systems

The work group was formed to address several key areas:

- Teaching and Learning
- Health & Safety
 - Personal protective equipment and hygiene
 - Cleaning and disinfecting
 - Spacing, Movement, and Access
- Screening of staff, students, and visitors
- Protocols for student and staff presenting with COVID-19 symptoms
- Protocols for responding to COVID-19 positive cases
- Social-emotional supports and well-being
- Athletics and extra-curricular activities
- Operations: Technology and Food Service
- Professional Development and training

State of Michigan Guidance

On June 30, Governor Whitmer released the MI Safe Schools: 2020-2021 Return to School Roadmap and Executive Order 2020-142. The Executive Order and Roadmap outline requirements and guidance on instructional and service delivery for the 2020-21 school year and are aligned to the MI Safe Start Plan. This document is intended to communicate specific components of East Grand Rapids Public School (EGRPS) plans and preparations for reopening schools in August of 2020 and is presented in compliance with Executive Order 2020-142.

Governor Whitmer's Phase Guidance for Michigan Schools was accompanied by comprehensive guidance in the Return to School Roadmap. The state guidance reinforces that Michigan schools are expected to deliver forward instruction to all students in the 2020-21 school year, while recognizing that the format for instructional delivery may shift across the year depending on which phase is assigned to Kent County.

The MI Safe Start Plan will continue to be used as the highest-level governing framework for determining if and when it is safe to resume in-person instruction. Within the MI Safe Start Plan, schools are not permitted to provide in-person instruction of any kind if their region is within Phases 1-3 of the pandemic. All schools are permitted to resume in-person instruction beginning in Phase 4 of the MI Safe Start Plan. Some regulations and mandates are removed as COVID-19 public health metrics improve in Phase 5 of the MI Safe Start Plan. All schools will remain open with some lasting safety requirements once community spread is not expected to return during Phase 6 of the MI Safe Start Plan.

Depending on the status of MI Safe Start Plan, there are four scenarios for school opening in fall 2020:

1. MI Safe Start Phases 1-3:
Schools do not open for in-person instruction and instruction is provided remotely
2. MI Safe Start Phase 4:
Schools open for in-person instruction with more stringent, required safety protocols
3. MI Safe Start Phase 5:
Schools open for in-person instruction with moderate, required safety protocols
4. MI Safe Start Phase 6:
Schools open for in-person instruction with minimal, required safety protocols

With Kent County currently in Phase 4 of the MI Safe Start Plan, EGRPS is planning on reopening schools on August 24, 2020, for in-person instruction.

OVERVIEW OF EGRPS LEARNING MODELS

Grades K-5 In-person Cohort Learning	Grades 6-12 Hybrid In-person Learning	Grades 6-12 Full In-Person Learning	Grades K-5 Fully Virtual Learning with EGRPS Teachers	Grades 6-12 Hybrid+ Fully Virtual Learning with EGRPS Teachers	Grades K-12 Pioneer Virtual Learning with Pearson/MV Teachers
<p>All K-5 students attend school in-person all day, every day.</p> <p>Features:</p> <ul style="list-style-type: none"> All students cohorted by class No mixing of classes indoors Students eat lunch in their classroom Students cohorted by grade level on playground Staff wear face coverings at all times Students wear face coverings, mask breaks provided with social distancing Class organization and communication through the Canvas Learning Management System 	<p>In order to reduce close contacts, students in grades 6-12 are clustered into two Groups: Gold and Blue.</p> <p>Gold Group students attend school in-person in the morning and complete asynchronous virtual learning at home in the afternoon.</p> <p>Blue Group students complete asynchronous virtual learning at home in the morning and attend school in-person in the afternoon.</p> <p>Features:</p> <ul style="list-style-type: none"> Staff wear face coverings at all times Students wear face coverings at all times Asynchronous instruction through the Canvas LMS 	<p>All students, in-person, every day, all day, at the same time with health and safety protocols in place.</p> <p>Features:</p> <ul style="list-style-type: none"> Staff wear face coverings at all times Students wear face coverings at all times, except when eating Students eat lunch in their classroom during 3rd hour at the HS and during 4th hour at the MS Students dismissed earlier from school due to shortened lunch period Course organization and communication through the Canvas Learning Management System 	<p>A fully virtual learning option for families concerned about their children learning in an in-person school environment.</p> <p>Features:</p> <ul style="list-style-type: none"> Student remains enrolled in EGRPS Taught by EGRPS teachers Provides a structured learning schedule EGRPS Curriculum Student remains a full-time student EGRPS Classroom teacher instructs students in Specials 	<p>A fully virtual learning option for families concerned about their children learning in an in-person school environment.</p> <p>Features:</p> <ul style="list-style-type: none"> Student remains enrolled in EGRPS Taught by EGRPS teachers Provides a structured learning schedule EGRPS Curriculum Student remains a full-time student enrolled in 6 classes. 	<p>A fully virtual learning option for families concerned about their children learning in an in-person school environment.</p> <p>Features:</p> <ul style="list-style-type: none"> Student remains enrolled in EGRPS Taught by Michigan certified teachers Students assigned an EGRPS Mentor Curriculum aligned to MI state standards Student remains a full-time student enrolled in 6 classes. Provides a flexible learning schedule
E-Learning Days					
<p>E-Learning days result from a shutdown due to the spread of COVID-19. EGRPS is prepared to move all students to virtual only instruction (E-Learning) based on a State and/or local decision to close schools as a result of an increase in COVID-19 spread. Follows a set schedule of asynchronous and synchronous learning</p>					

For 6-12, the secondary Hybrid Model is the model under which EGRPS intends to begin the school year on August 24, 2020. The goal is to implement full in-person instruction at the secondary level when health conditions permit.



Learning Options

For All EGRPS Students— In-Person & Full-Virtual

School Begins August 24

Deadline to elect or confirm your child's preferred learning model
August 11 | @11:59p.m. | www.egrps.org/rtlsignup

Grades K-5

A	B	C
<p>in-person cohort MI SAFE START: Phase 4-5 All students attend school all-day, every day. *</p>	<p><i>Pioneer Virtual Learning</i> structured full-time virtual MI SAFE START: Phase 1-6 E-learning at-home with EGRPS teachers & curriculum aligned to the K-5 learning schedule. □</p>	<p><i>Pioneer Virtual Learning</i> flexible full-time virtual Available during any MI SAFE START Phase • Michigan certified teacher provided by Pearson. • Flexible learning schedule • Available by choice to any enrolled EGRPS student. • Semester commitment to six fully virtual courses. • EGRPS provides a mentor. □</p>
<p>e-learning MI SAFE START: Phase 1-6 School closure due to local/state authority. Learning at-home with EGRPS teachers. □</p>		

* In-person Learning
 □ Virtual Learning

Grades 6-12

A	B	C
<p>in-person hybrid MI SAFE START: Phase 4-5 Grouped students attend physically & virtually during morning or afternoon sessions. EGRPS teachers simultaneously serve in-person & fully virtual students. * □</p>	<p><i>Pioneer Virtual Learning</i> hybrid+ e-learning MI SAFE START: Phase 1-6 Grouped students attend virtually during morning and afternoon sessions. EGRPS teachers simultaneously serve in-person & fully virtual students. □</p>	<p><i>Pioneer Virtual Learning</i> flexible full-time virtual Available during any MI SAFE START Phase • Michigan certified teacher provided by Pearson/Michigan Virtual. • Flexible learning schedule • Available by choice to any enrolled EGRPS student. • Semester commitment to six fully virtual courses. • EGRPS provides a mentor. □</p>
<p>e-learning MI SAFE START: Phase 1-6 School closure due to local/state authority. Learning at-home with EGRPS teachers. □</p>		

GRADES K-5 IN-PERSON COHORT LEARNING

Overview

All students attend school in-person, every day. Students are cohorted by their class and do not mix with students from other classes while indoors. This learning model most closely mirrors our traditional K-5 school experience. School start times and end time remain the same, beginning at 8:20 a.m. and ending at 3:19 p.m. Students participate in recess, lunch, Specials, and Spanish, and receive pull-out or push-in support services as needed.

Grades 3-5 Switches

Instead of switching to different classrooms for math, science, or social studies, the subject area teacher will push into each classroom for instruction.

Specials

Art, music, physical education, and Spanish continue to be part of each child's school experience. As in the past, students have Specials one-half day per week. Students remain as a cohorted class when attending Specials.

Lunch and Food Service

Students eat in their classroom and then play outside for an extended lunch recess. Students are encouraged to bring a ready-to-eat sack lunch or pre-order a ready-to-eat lunch from food service. For the safety of all students, all food entering the classroom must follow the guidelines communicated by the teacher regarding food in that classroom.

Recess

Students play outside during an extended lunch recess and an extended afternoon recess. While outside students are assigned, on a rotating basis, to a specific area of the playground with their grade level peers.

Face Coverings

All staff and students wear face coverings, except when eating and drinking. This includes wearing face coverings in hallways and common areas and at arrival, departure, and recess. Elementary students will be provided mask breaks throughout the day as determined by the teacher and when appropriate social distancing can be maintained.

Sample K-5 In-person Cohort Model Schedule

	Monday	Tuesday	Wednesday	Thursday	Friday
8:20 - 8:30	Class Check-in	Class Check-in	Class Check-in	Class Check-in	Class Check-in
8:30 - 9:30	Reading Workshop	Reading Workshop	Reading Writing Math	Reading Workshop	Reading Workshop
9:30-10:50	Additional Literacy & Writing Workshop	Additional Literacy & Writing Workshop		Additional Literacy & Writing Workshop	Additional Literacy & Writing Workshop
10:50 - 12:10	Lunch & Recess	Lunch & Recess	Lunch & Recess	Lunch & Recess	Lunch & Recess
12:10 - 1:00	Check-in & Math	Check-in & Math	Art Spanish Music/PE	Check-in & Math	Check-in & Math
1:00 - 1:50	Science	Science		Science	Science
1:50 - 2:20	Recess	Recess	Recess	Recess	Recess
2:20 - 3:10	Social Studies	Social Studies	Art Spanish Music/PE	Social Studies	Social Studies
3:10 - 3:19	Wrap Up	Wrap Up		Wrap Up	Wrap Up

GRADES 6-12 HYBRID IN-PERSON LEARNING

Overview

All students attend school in-person, but not at the same time. Students are clustered into two groups, Gold and Blue, by first letter of the student's last name. Each group will be assigned days and times for when they are able to attend in-person and when they must attend virtually. The middle school will run from 8:00 a.m. - 2:52 p.m. and the high school will run from 7:40 a.m. - 2:59 p.m.

Lunch and Food Service

With students attending school in-person for one half of the day, they will not eat lunch at school. Students will be able to pre-order a ready-to-eat sack lunch that can be picked up each day at school.

Face Coverings

All staff and students wear face coverings, except when eating and drinking. This includes wearing face coverings in hallways and common areas and at arrival and departure.

Definitions of Asynchronous and Synchronous Learning

Asynchronous learning is distance learning (student and teacher in separate locations) in which the student and teacher are not connected in real time (not live). Asynchronous learning requires students to independently complete tasks and activities. Methods of asynchronous online learning include self-guided lesson modules, streaming video content, virtual libraries, posted lecture notes, and exchanges across discussion boards or social media platforms.

Synchronous learning is distance learning (student and teacher in separate locations) in which the student and teacher remain in separate locations, but are electronically connected in real time/live. This involves the student and their instructor interacting in a specific virtual place, through a specific online medium, at a specific time.

Sample Secondary Hybrid Learning Schedule

All learning is synchronous		Monday	Tuesday	Wednesday	Thursday	Friday
		Follow E-Learning Schedule	Follow E-Learning Schedule	Follow E-Learning Schedule	Follow E-Learning Schedule	Follow E-Learning Schedule
Gold	A.M.	In-Person Learning	At-home Virtual Learning	At home Virtual Learning for All	In-Person Learning	At-home Virtual Learning
	P.M.	At-home Virtual Learning	In-Person Learning		At-home Virtual Learning	In-Person Learning
Blue	A.M.	At-home Virtual Learning	In-Person Learning	A teacher may request a student from either the Gold or Blue to attend in-person	At-home Virtual Learning	In-Person Learning
	P.M.	In-Person Learning	At-home Virtual Learning		In-Person Learning	At-home Virtual Learning

learning schedules

Note: Fully virtual students in Hybrid+ attend class at-home every day.

	Gold Group	
	Blue Group	
	Morning Classes	Afternoon Classes
Monday	IN-PERSON	VIRTUAL
	VIRTUAL	IN-PERSON
Tuesday	VIRTUAL	IN-PERSON
	IN-PERSON	VIRTUAL
Wednesday	= At-home E-Learning for All	
Thursday	IN-PERSON	VIRTUAL
	VIRTUAL	IN-PERSON
Friday	VIRTUAL	IN-PERSON
	IN-PERSON	VIRTUAL

Middle School Grades 6-8

1ST HOUR	↓↑ 8:00 – 8:59
2ND HOUR	↓↑ 9:04 – 10:03
3RD HOUR	↓↑ 10:08 – 11:06
LUNCH	11:06 – 11:46
4TH HOUR	↓↑ 11:46 – 12:44
5TH HOUR	↓↑ 12:49 – 1:48
6TH HOUR	↓↑ 1:53 – 2:52

High School Grades 9-12

1ST HOUR	↓↑ 7:40 – 8:37
2ND HOUR	↓↑ 8:42 – 9:39
3RD HOUR	↓↑ 9:44 – 10:51
LUNCH	10:51 – 11:57
4TH/5TH HOUR	↓↑ 11:57 – 12:54
6TH HOUR	↓↑ 12:59 – 1:56
7TH HOUR	↓↑ 2:01 – 2:59

***NOTE:** The secondary Hybrid Model is the learning model under which EGRPS intends to begin the school year on August 24, 2020. Full in-person instruction at the secondary level will be implemented when health conditions permit it. Families will receive ongoing updates and communications related to this determination.

GRADES 6-12 FULL IN-PERSON LEARNING

Overview/Rationale

Full, in-person, face-to-face instruction is the best learning environment for our students. It is our goal to move toward our secondary students joining their elementary peers in attending school in-person, all day, every day rather than attending only part of a day in-person as in a hybrid model. The current definition of close contacts, our inability to cohort students 6-12, and provide 6 feet of space between every person when there is 100% occupancy, requires us to begin the year with a 50% student population, 50% of the time. If we are successful in mitigating transmission, and we are able to stay open, we will gradually add more face-to-face time for our secondary students. The hybrid model provides a gradual re-entry back to school for students and staff for our most densely populated buildings. To this end, after the 4th week of school, when possible based on health and safety conditions, we will move away from the hybrid model to the full in-person model with all secondary students attending school in-person, all day, every day at the same time. This full-in person learning model would reflect our traditional in-person secondary model, with adjustments to lunch and dismissal time.

Face Coverings

All staff and students wear face coverings, except when eating and drinking. This includes wearing face coverings in hallways and common areas and at arrival and departure.

Lunch Plan

HS: All students are encouraged to leave campus during their one-hour, open campus, assigned lunch period. For those students unable to leave campus, they may eat in the cafeteria. Students may order a pre-packaged lunch from the district. All orders must be submitted using this [online form](#).

MS: Students will eat lunch in either the cafetorium, gymnasium, and/or outside (weather permitting) with additionally spaced and assigned seating. Students should bring a pre-packaged lunch or order a pre-packaged lunch from the district. All orders must be submitted using this [online form](#).

Lockers:

HS: Historically, at the high school, a majority of our students do not use lockers. If your child would like to use a locker, please have them stop by the office to receive his/her locker and locker combination as lockers have already been assigned to all students.

MS: All students have a locker assigned to them. Locker numbers and combinations will be provided to students next week. Students in the 6th grade will have an opportunity to receive a tutorial on how to open their locker and a time to practice opening their locker.

Daily Class Schedules

HS Daily Class Schedule:

1st Hour	7:40 - 8:37
2nd Hour	8:42 - 9:39
3rd Hour	9:44 - 10:51
4th Hour	10:56 - 11:53
5th Hour	11:58 - 12:55
6th Hour	1:00 - 1:57
7th Hour	2:02 - 2:59

MS Daily Class Schedule:

6 th Grade	7 th Grade	8 th Grade
1 st Hour.....8:00 AM – 8:59 AM	1 st Hour.....8:00 AM – 8:59 AM	1 st Hour.....8:00 AM – 8:59 AM
2 nd Hour.....9:04 AM – 10:03 AM	2 nd Hour.....9:04 AM – 10:03 AM	2 nd Hour.....9:04 AM – 10:03 AM
3 rd Hour.....10:08 AM – 11:06 AM	Lunch.....10:08 AM – 10:38 AM	3 rd Hour.....10:08 AM – 11:06 AM
4 th Hour.....11:11 AM – 12:09 PM	3rd Hour.....10:43 AM – 11:41 AM	Lunch.....11: 11 AM – 11:41 AM
Lunch.....12:14 PM – 12:44 PM	4 th Hour.....11:46 AM – 12:44 PM	4 th Hour.....11:46 AM – 12:44 PM
5 th Hour.....12:49 PM – 1:48 PM	5 th Hour.....12:49 PM – 1:48 PM	5 th Hour.....12:49 PM – 1:48 PM
6 th Hour.....1:53 PM – 2:52 PM	6 th Hour.....1:53 PM – 2:52 PM	6 th Hour.....1:53 PM – 2:52 PM
Academic Help.....2:52 PM – 3:02 PM	Academic Help.....2:52 PM – 3:02 PM	Academic Help.....2:52 PM – 3:02 PM

Virtual Wednesdays:

On Wednesdays that are scheduled as all virtual days, MS students will follow the 8th grade daily time schedule.

K-5 PIONEER VIRTUAL - ALL ONLINE - EGRPS TEACHERS

Overview

The K-5 all online learning with EGRPS Teachers is available by request for any family that is more comfortable having their child learn all online rather than in-person or through a hybrid model. This option will be available to families in Phases 1-5.

Students must commit to this all online learning model for the entire semester. During a semester students are unable to move between this model, the Pioneer Virtual Learning model with Pearson teachers and the K-5 cohort model except at the semester. Families will have the opportunity to move into in-person learning at the semester. Those who sign-up for Pioneer Virtual Learning with EGRPS teachers remain East Grand Rapids Public School students with the same access to services and activities as traditionally enrolled EGRPS students.

Schedule

A typical day for all virtual students with EGRPS teachers is shown below. Students will receive their Specials from their assigned classroom teacher.

8:15 - 8:20	Prep for Day	Asynchronous
8:20 - 8:30	Check-in with Teacher	Synchronous
8:30 - 9:40	Reading Workshop	Synchronous / Asynchronous
9:40 - 9:55	“RECESS”	Movement Encouraged
9:55 - 10:15	Additional Literacy	Synchronous
10:15 - 11:25	Writing Workshop	Synchronous / Asynchronous
11:25 - 12:10	LUNCH & “RECESS”	Movement Encouraged
12:10 - 12:20	Check-in with Teacher	Synchronous
12:20 - 1:30	Math	Synchronous / Asynchronous
1:30 - 2:15	Science	Synchronous / Asynchronous
2:15 - 2:30	“RECESS”	Movement Encouraged
2:30 - 3:10	Social Studies	Synchronous / Asynchronous
3:10 - 3:19	Wrap-up	Synchronous

Definitions of Asynchronous and Synchronous Learning

Asynchronous learning is distance learning (student and teacher in separate locations) in which the student and teacher are not connected in real time (not live). Asynchronous learning requires students to independently complete tasks and activities. Methods of asynchronous online learning include self-guided lesson modules, streaming video content, virtual libraries, posted lecture notes, and exchanges across discussion boards or social media platforms.

Synchronous learning is distance learning (student and teacher in separate locations) in which the student and teacher remain in separate locations, but are electronically connected in real time/live. This involves the student and their instructor interacting in a specific virtual place, through a specific online medium, at a specific time.

6-12 PIONEER VIRTUAL - ALL ONLINE - EGRPS TEACHERS - HYBRID+

Overview

The 6-12 all online learning with EGRPS Teachers, referred to as Hybrid +, is available to any family that is more comfortable having their child learn all online rather than in-person or through a hybrid model. This option will be available to families in Phases 1-5.

Students are not required to make a semester commitment to Hybrid +. Instead, they are able to move from Hybrid+ to the In-person Hybrid as they need. Students participating in Hybrid+ have the same access to EGRPS courses and teachers as those students participating in the In-person Hybrid model. Those who sign-up for Pioneer Virtual Learning with EGRPS teachers remain East Grand Rapids Public School students with the same access to services and activities as traditionally enrolled EGRPS students.

Hybrid+ students follow the same schedule as their In-person Hybrid peers, except only virtually. Each class period is a blended session combining synchronous and asynchronous learning with EGRPS teachers.

Learning Schedules

Note: Fully virtual students in Hybrid+ attend class at-home every day.

	Gold Group	
	Blue Group	
	Morning Classes	Afternoon Classes
Monday	IN-PERSON	VIRTUAL
	VIRTUAL	IN-PERSON
Tuesday	VIRTUAL	IN-PERSON
	IN-PERSON	VIRTUAL
Wednesday	At-home E-Learning for All	
Thursday	IN-PERSON	VIRTUAL
	VIRTUAL	IN-PERSON
Friday	VIRTUAL	IN-PERSON
	IN-PERSON	VIRTUAL

Middle School Grades 6-8	High School Grades 9-12
1ST HOUR ↓↑ 8:00 – 8:59	1ST HOUR ↓↑ 7:40 – 8:37
2ND HOUR ↓↑ 9:04 – 10:03	2ND HOUR ↓↑ 8:42 – 9:39
3RD HOUR ↓↑ 10:08 – 11:06	3RD HOUR ↓↑ 9:44 – 10:51
LUNCH 11:06 – 11:46	LUNCH 10:51 – 11:57
4TH HOUR ↓↑ 11:46 – 12:44	4TH/5TH HOUR ↓↑ 11:57 – 12:54
5TH HOUR ↓↑ 12:49 – 1:48	6TH HOUR ↓↑ 12:59 – 1:56
6TH HOUR ↓↑ 1:53 – 2:52	7TH HOUR ↓↑ 2:01 – 2:59

K-12 PIONEER VIRTUAL - ALL ONLINE - PEARSON/MI VIRTUAL TEACHERS

Overview

The Pioneer Virtual Learning option is available by request for any family that is more comfortable having their child learn all online rather than in-person or through a hybrid model.

Students must commit to the Pioneer Virtual Learning option for an entire semester. A student may not move between the Pioneer Virtual Learning model, the 6-12 hybrid, K-5 cohort, or e-learning models except at the semester.

Those who sign-up for Pioneer Virtual Learning remain East Grand Rapids Public School students with the same access to services and activities as traditionally enrolled EGRPS students. The Pioneer Virtual Learning program is currently planned to be taught by Michigan Certified teachers provided by Pearson or Michigan Virtual (MV). Each EGRPS student will be assigned a mentor who is an EGRPS employee who supports the student with technical issues, periodic check-ins, and communications between the district and the course/subject provider and/or teacher.

Definitions of Asynchronous and Synchronous Learning

Asynchronous learning is distance learning (student and teacher in separate locations) in which the student and teacher are not connected in real time (not live). Asynchronous learning requires students to independently complete tasks and activities. Methods of asynchronous online learning include self-guided lesson modules, streaming video content, virtual libraries, posted lecture notes, and exchanges across discussion boards or social media platforms.

Synchronous learning is distance learning (student and teacher in separate locations) in which the student and teacher remain in separate locations, but are electronically connected in real time/live. This involves the student and their instructor interacting in a specific virtual place, through a specific online medium, at a specific time.

Students in Grades K-8

East Grand Rapids Public Schools has partnered with Pearson, a leading education company that has provided virtual instruction to students worldwide for more than a decade. Together, we provide a program that is accredited and nationally recognized with a curriculum aligned with the State of MI Standards and the Common Core Standards.

Learning is integrated within individual activities, independent tasks, synchronous sessions and phone calls with Michigan certified teachers. Learning can occur when students learn best, and not just between 8:00 a.m. and 3:00 p.m.

Key features of Pearson:

- One synchronous session per week, per each of the following subjects: Language Arts, math, and science (3 per week)
- Synchronous lesson for elective subjects are one to two times a month
- Flexible asynchronous learning for the balance of instructional time
- Teachers provide synchronous weekly office hours for drop-in support
- 1:1 teacher-to-student/parent meetings as requested
- Teachers provide timely, qualitative video and text-based feedback
- Student-to-student interaction through live lessons and Pearson's Connexus learning management system

Pearson will make every effort to group Pioneer Virtual Learning students from EGRPS with their EGRPS peers.

Elementary

Students who enroll in Pioneer Virtual Learning take six to eight courses, including language arts, math, social studies, science, Spanish (grades 3-5), and electives (art, music, physical education).

The student's daily routine may include checking WebMail messages, looking at the calendar within the platform, attending scheduled synchronous sessions, and completing independent lessons and assessments. A sample K-5 student schedule is below:

PEARSON K-8: SAMPLE STUDENT "DAY IN THE LIFE"

Morning	<ul style="list-style-type: none">❑ Student and Learning Coach (Most likely the student's parent/guardian) log on, read messages, and review lessons.❑ Student reads and responds to WebMail messages from teacher about progress (with the help of the Learning Coach depending upon reading level).❑ Student participates in a LiveLesson session for math with teacher and classmates.❑ Student completes a Math lesson. Learning Coach monitors and facilitates learning, as necessary.❑ Student completes a Language Arts lesson, including reading, writing, and discussing the lesson activities and text. Student completes a lesson and takes a quiz online.❑ Student goes outside for a playground activity with Learning Coach.
Afternoon	<ul style="list-style-type: none">❑ Student makes sandwich for lunch, as part of the Home Life elective course.❑ Student completes a science lesson and finishes reading a non-fiction reading selection (with the help of the Learning Coach depending upon reading level).❑ As part of a STEM activity, student completes a hands-on science experiment outside with Learning Coach.❑ Student goes to soccer practice and the local library.❑ After returning, student completes art lesson and then participates in Book Club.❑ Learning Coach confirms lessons completed and records attendance.❑ Learning Coach and student review next day's schedule and prepare accordingly.

Middle School

Students who enroll in Pioneer Virtual Learning will take language arts, math, science, social studies, and two elective courses. All virtual classes are a semester long and taught by Pearson educators who are Michigan Certified Teachers. Students should expect to log into each class daily and complete activities, assignments, and assessments. Students' daily schedule will be based on their course selections.

Sample Middle School Courses

6th Grade Core Courses	7th Grade Core Courses	8th Grade Core Courses
English 6 Math 6 Science 6 Social Studies 6	English 7 Math 7 Science 7 Social Studies 7	English 8 Pre-Algebra, Algebra, Geometry Science 8 Social Studies 8
6th Grade Elective Choices	7th Grade Elective Choices	8th Grade Elective Choices
Spanish 6 A/B Art 6 A/B Digital Art & Design Exploring Music I, II, III Health & PE 6 A/B Photography Study Skills	Spanish 7 A/A Art 7 A/B Digital Art & Design Exploring Music I, II, III Health & PE 7 A/B Photography Study Skills	Spanish 8 A/B Art 8 A/B Digital Art & Design Exploring Music I, II, III Health & PE 8 A/B Photography Study Skills

Students in Grades 9-12

East Grand Rapids Public Schools is expanding its longstanding partnership with Michigan Virtual (MV) to provide a fully online option to our 9-12 students. Our secondary students have previously found success utilizing MV courses when a course is not offered within our school or when an online course solves a student's scheduling conflict. MV is accredited and fully aligned with the State of MI Standards, the Common Core Standards, and the Michigan Merit Curriculum to ensure our students are on a pathway towards graduation.

High school students enrolled in MV pursue courses that fulfill East Grand Rapids graduation requirements. Students will individually select courses that best fit their needs and interests. Students will receive grades from MV that will be placed on their EGRPS transcript.

MV hires Michigan certified teachers to write curriculum and teach their courses. Students develop relationships with their online teachers and classmates through discussion boards, phone calls, emails, text messages, instructional videos, and online help sessions. Students will primarily work asynchronously, meaning the student will independently develop a schedule to complete coursework. Students will be provided a mentor, an EGRPS employee, who will monitor their progress and with whom they will periodically check-in. MV offers dozens of core and elective courses, including Advanced Placement, statistics, economics, calculus, world history, US history, government, multiple world languages, music, art, chemistry, physics, and biology.

Key features of Michigan Virtual:

- No scheduled synchronous learning
- Full asynchronous learning with teachers providing synchronous office hrs. for drop-in support
- Teachers respond to emails within 24 hours
- Teachers provide video and/or text-based feedback on assignments within 72 hours
- Student-to-teacher and student-to-student interaction through email, text, discussion boards, and the Brightspace learning management system

Commitment

Students choosing Pioneer Virtual Learning must commit for a semester at a time. Moving between Pioneer Virtual Learning and in-person learning, hybrid learning or E-Learning is only possible at the beginning of each semester.

Pioneer Virtual Learning students remain EGRPS students, and as such, must be full-time students. A full-time student is one who is enrolled in six online courses/subjects.

Sign-up Process & Deadline

To ensure the district is able to effectively staff and place students, we are requiring currently enrolled families committing to the Pioneer Virtual Learning option to sign-up for this option **by August 5, 2020, at 5:00 p.m.** The deadline will be extended for new families who enroll in the district after August 5, 2020. After signing up, the district will acknowledge your commitment to Pioneer Virtual Learning and a building administrator or counselor will reach out to you directly to plan your child's individualized Pioneer Virtual Learning schedule.

Click [here](#) to access the Sign-up Form: www.egrps.org/pioneersignup

Information Sessions

EGRPS, in collaboration with Pearson and Michigan Virtual, will host for families two virtual information sessions on Pioneer Virtual Learning:

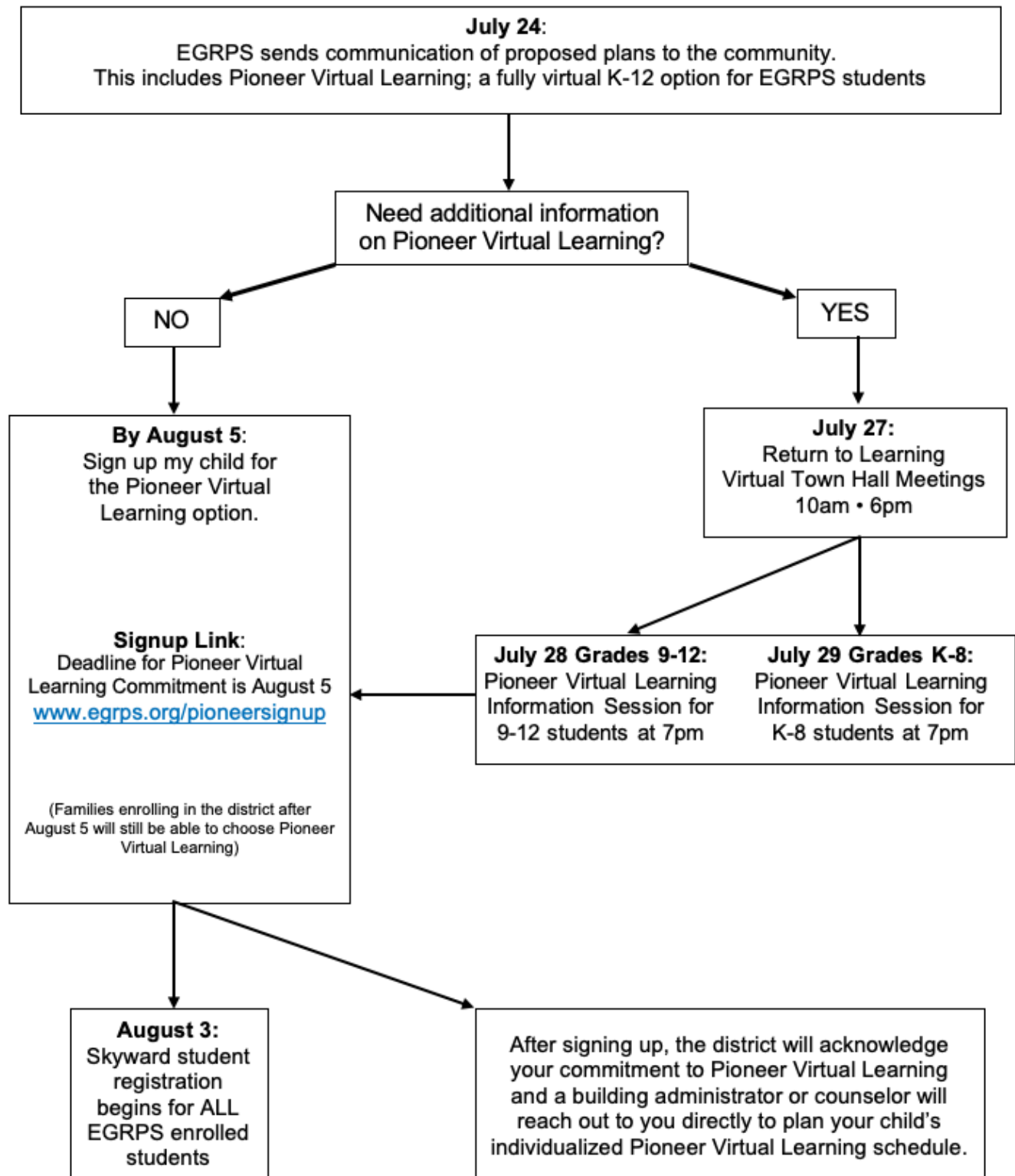
- ❑ For 9-12 students on Tuesday, July 28, 2020 at 7:00 p.m.
Click [here](#) to connect to the virtual meeting.

- ❑ For K-8 students on Wednesday, July 29, 2020 at 7:00 p.m.
Click [here](#) to connect to the virtual meeting.

Frequently Asked Questions

For additional information please see the [FAQ](#) for Pioneer Virtual Learning.

Overview of Process



K-12 E-LEARNING

Overview

Based on a State and/or local decision about closures, EGRPS is prepared to move a group of students or all students to virtual only instruction, called E-Learning. E-Learning days follow a set schedule of asynchronous and synchronous learning which is delivered by each student’s assigned EGRPS teacher(s) through the Canvas Learning Management System.

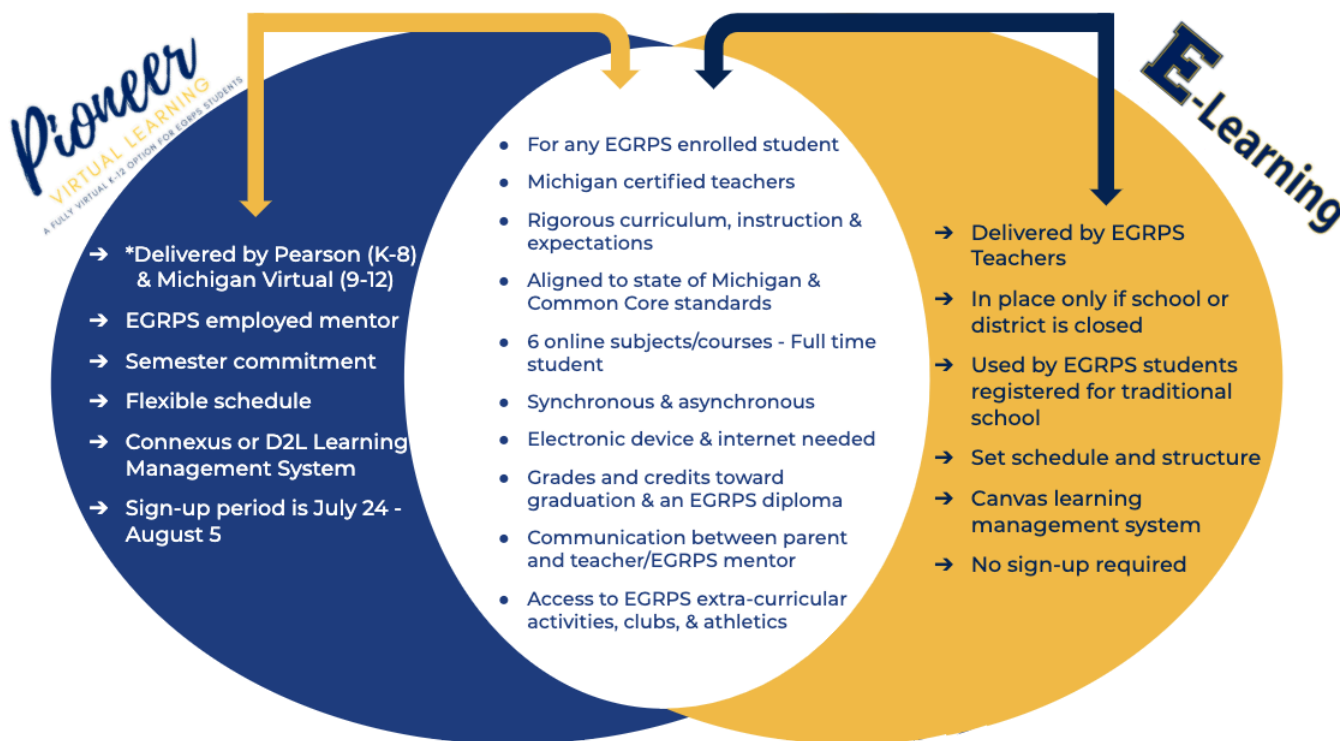
Comparison to the Continuity of Learning Plan

During the spring and summer months we researched, networked with other districts, and gathered feedback from all stakeholders regarding our spring 2020 Continuity of Learning Plan (CLP) and best practices in learning and delivering instruction remotely. We set aside the CLP and developed a new framework, called E-Learning, that incorporates newly gained insights, feedback, and data from our experiences in the spring of 2020 and our experiences with virtual instruction in the beginning of the 2020-2021 school year.

Continuity of Learning Plan	E-Learning
Participation optional	Participation required
Mainly asynchronous	Blend of synchronous and asynchronous
Low accountability	Increased accountability through attendance, grading, & schedule
High degree of flexibility	Set schedule & more structure
Multiple communications, links, and platforms	Single learning management platform for delivery of instruction, assignments, and communications
Limited assessment & feedback	Ongoing assessment & qualitative feedback

E-Learning Days vs. Pioneer Virtual Learning

E-Learning Days and Pioneer Virtual Learning are different programs. Please view the graphic below to understand the similarities and differences in the two models.



Canvas Learning Management System

A Learning Management System (LMS) is a way to simplify teaching and learning by connecting the digital tools teachers, students, and parents use into one place. EGRPS chose Canvas as its K-12 LMS for its robust tool set and ease of use for students and parents/guardians. Information and support for parents, students, and teachers for using Canvas is forthcoming.

Students can use Canvas to:

- Access class materials (calendar, assignments, quizzes, etc.) online using any device or any browser
- Track their progress through ongoing teacher feedback tools
- Receive course announcements, grade notifications, etc. instantaneously on their preferred device(s)
- Easily collaborate with peers and teachers

Parents can use Canvas to:

- To view the resources and activities posted in their child's courses that are available
- Read announcements, calendar, and course syllabus
- See a list of assignments and quiz titles with due dates
- See the child's assignments and quizzes, but not his/her discussion posts

- View the child’s scores
- Use the Inbox to contact the teacher
- Set up notifications to get emails or texts for announcements, assignments, etc.

Teachers can use Canvas to:

- Receive and grade student assignments, discussions, and quizzes (Skyward will continue to be the official gradebook)
- Easily align assignments and rubrics to standards and/or learning objectives.
- Provide students with written, audio, or video feedback and multiple revision/submission opportunities
- Organize all work and course-related events into one, drag-and-drop calendar
- Push course notifications to students via email and text

To learn more about how Canvas supports parents/guardians, students, and teachers view these short videos: [Get to Know Canvas](#) (1min. 42sec.) or [Canvas LMS for Parents](#) (4min. 40sec.). The district will provide more specific information regarding Canvas in the upcoming weeks.

Elementary E-Learning Days

During an E-Learning Day, an elementary student will follow a set schedule of both synchronous and asynchronous learning with their classroom teacher. The schedule will reflect that of the traditional school day for an elementary student. A student continues to have Specials one half-day per week. Academic times are adjusted on Specials day.

Attendance is required, recorded, and monitored on E-Learning days. Parents/Guardians should report student absences from virtual instruction in the Skyward Family Access system. Student work will be assessed in a timely manner, and constructive qualitative and quantitative feedback will be given by the teacher. Report cards are issued.

Elementary E-Learning Days Daily Schedule

8:15 - 8:20	Prep for Day	Asynchronous
8:20 - 8:30	Check-in with Teacher	Synchronous
8:30 - 9:40	Reading Workshop	Synchronous / Asynchronous
9:40 - 9:55	“RECESS”	Movement Encouraged
9:55 - 10:15	Additional Literacy	Synchronous
10:15 - 11:25	Writing Workshop	Synchronous / Asynchronous
11:25 - 12:10	LUNCH & “RECESS”	Movement Encouraged
12:10 - 12:20	Check-in with Teacher	Synchronous
12:20 - 1:30	Math	Synchronous / Asynchronous
1:30 - 2:15	Science	Synchronous / Asynchronous
2:15 - 2:30	“RECESS”	Movement Encouraged
2:30 - 3:10	Social Studies	Synchronous / Asynchronous
3:10 - 3:19	Wrap-up	Synchronous

**Student work time during “Synchronous/Asynchronous” instruction includes a combination of small group instruction with the teacher and independent work.*

Secondary E-Learning Days

Students follow their normal school day schedule, just at home. During the first part of each class period teachers conduct synchronous instructional sessions via Zoom and Canvas which may include direct instruction, application time, small group work, or other instructional approaches Teachers will be synchronously available to support students during this time period. High school students have lunch either 4th or 5th period.

Attendance is required, recorded, and monitored on E-Learning days. Parents/Guardians should report student absences from a virtual class in the Skyward Family Access system. Student work will be assessed in a timely manner, and constructive qualitative and quantitative feedback will be given by the teacher. Grades and report cards will be issued.

Middle School E-Learning Daily Schedule

1st Hour	8:00 - 8:59
2nd Hour	9:04 - 10:03
3rd Hour	10:08 - 11:06
LUNCH	11:06 - 11:46
4th Hour	11:46 - 12:44
5th Hour	12:49 - 1:48
6th Hour	1:53 - 2:52

High School E-Learning Daily Schedule

1st Hour	7:40 - 8:37
2nd Hour	8:42 - 9:39
3rd Hour	9:44 - 10:51
4th Hour/Lunch	10:56 - 11:53
5th Hour/Lunch	11:58 - 12:55
6th Hour	1:00 - 1:57
7th Hour	2:02 - 2:59

WEEKLY SCHEDULES

For EGRPS Students Choosing Pioneer Virtual Learning

The 2020-2021 school year will begin on Monday, August 24, 2020. Prior to this date, students enrolled in the all online Pioneer Virtual Learning will receive specific communications regarding their schedules and start times.

For EGRPS Students to Attend School In-Person

EGRPS students not enrolled in Pioneer Virtual Learning will attend school in-person starting August 24, 2020. Currently, EGRPS is planning to begin the school year on August 24 with elementary students in the Cohort Learning Model and secondary students in the In-Person Hybrid Model. If Kent County is moved to Phases 1-3 of the [MI Safe Start Plan](#), then EGRPS will begin school on August 24 with all students learning and receiving instruction through E-Learning.

To ensure students, families, and staff are fully prepared to return to school, the schedules for the first four weeks of school will look slightly different. This schedule variation will allow for a phased in approach to in-person learning and time for staff professional development (PD) and training. In addition, such an approach provides EGRPS with an opportunity to respond to changing and new health and safety protocols and to implement cohorting, asynchronous learning, and E-Learning if needed.

Elementary Daily Schedule

Week #1: August 24 - 28

	Monday	Tuesday	Wednesday	Thursday	Friday
A.M.	In-Person 8:15 - 11:24	In-Person 8:15 - 11:24	In-Person 8:15 - 11:24	In-Person 8:15 - 11:24	No School for Students
P.M.	No School for Students	No School for Students	No School for Students	No School for Students	

Middle School Daily Schedule

Week #1: August 24 - 28

		Monday	Tuesday	Wednesday	Thursday	Friday
Gold	A.M.	In-Person Periods 1-3	Virtual Periods 1-3	In-Person Periods 4-6	Virtual Periods 4-6	No School for Students
	P.M.	Professional Development	Professional Development	Professional Development	Professional Development	Professional Development
Blue	A.M.	Virtual Periods 1-3	In-Person Periods 1-3	Virtual Periods 4-6	In-Person Periods 4-6	No School for Students
	P.M.	Professional Development	Professional Development	Professional Development	Professional Development	Professional Development

High School Daily Schedule

Week #1: August 24 - 28

		Monday	Tuesday	Wednesday	Thursday	Friday
Gold	A.M.	In-Person Periods 1-3	Virtual Periods 1-3	In-Person Periods 4/5-7	Virtual Periods 4/5-7	No School for Students
	P.M.	Professional Development	Professional Development	Professional Development	Professional Development	Professional Development
Blue	A.M.	Virtual Periods 1-3	In-Person Periods 1-3	Virtual Periods 4/5-7	In-Person Periods 4/5-7	No School for Students
	P.M.	Professional Development	Professional Development	Professional Development	Professional Development	Professional Development

Week #2: August 31 - September 4

Elementary Daily Schedule

Week #2: August 31 - September 4

Monday	Tuesday	Wednesday	Thursday	Friday
In-Person Full day 8:15-3:19	In-Person Full day 8:15-3:19	In-Person Full day 8:15-3:19	In-Person Full day 8:15-3:19	No School for Students or Staff (Labor Day Vacation)

Middle School Daily Schedule

Week #2: August 31 - September 4

		Monday	Tuesday	Wednesday	Thursday	Friday
Gold	A.M.	In-Person Periods 1-3 1st: 8:00 - 8:59 2nd: 9:04 - 10:03 3rd: 10:08 - 11:06	Virtual Periods 1-3 1st: 8:00 - 8:59 2nd: 9:04 - 10:03 3rd: 10:08 - 11:06	In-Person Periods 1-3 1st: 8:00 - 8:59 2nd: 9:04 - 10:03 3rd: 10:08 - 11:06	Virtual Periods 1-3 1st: 8:00 - 8:59 2nd: 9:04 - 10:03 3rd: 10:08 - 11:06	No School for Students or Staff
	P.M.	Virtual Periods 4-6 4th: 11:46 - 12:44 5th: 12:49 - 1:48 6th: 1:53 - 2:52	In-Person Periods 4-6 4th: 11:46 - 12:44 5th: 12:49 - 1:48 6th: 1:53 - 2:52	Virtual Periods 4-6 4th: 11:46 - 12:44 5th: 12:49 - 1:48 6th: 1:53 - 2:52	In-Person Periods 4-6 4th: 11:46 - 12:44 5th: 12:49 - 1:48 6th: 1:53 - 2:52	
Blue	A.M.	Virtual Periods 1-3 1st: 8:00 - 8:59 2nd: 9:04 - 10:03 3rd: 10:08 - 11:06	In-Person Periods 1-3 1st: 8:00 - 8:59 2nd: 9:04 - 10:03 3rd: 10:08 - 11:06	Virtual Periods 1-3 1st: 8:00 - 8:59 2nd: 9:04 - 10:03 3rd: 10:08 - 11:06	In-Person Periods 1-3 1st: 8:00 - 8:59 2nd: 9:04 - 10:03 3rd: 10:08 - 11:06	
	P.M.	In-Person Periods 4-6 4th: 11:46 - 12:44 5th: 12:49 - 1:48 6th: 1:53 - 2:52	Virtual Periods 4-6 4th: 11:46 - 12:44 5th: 12:49 - 1:48 6th: 1:53 - 2:52	In-Person Periods 4-6 4th: 11:46 - 12:44 5th: 12:49 - 1:48 6th: 1:53 - 2:52	Virtual Periods 4-6 4th: 11:46 - 12:44 5th: 12:49 - 1:48 6th: 1:53 - 2:52	

High School Daily Schedule

Week #2: August 31 - September 4

		Monday	Tuesday	Wednesday	Thursday	Friday
Gold	A.M.	In-Person Periods 1-3 1st: 7:40 - 8:37 2nd: 8:42 - 9:39 3rd: 9:44 - 10:51	Virtual Periods 1-3 1st: 7:40 - 8:37 2nd: 8:42 - 9:39 3rd: 9:44 - 10:51	In-Person Periods 1-3 1st: 7:40 - 8:37 2nd: 8:42 - 9:39 3rd: 9:44 - 10:51	Virtual Periods 1-3 1st: 7:40 - 8:37 2nd: 8:42 - 9:39 3rd: 9:44 - 10:51	No School for Students or Staff
	P.M.	Virtual Periods 4-6 4/5: 11:58 - 12:55 6th: 1:00 - 1:57 7th: 2:02 - 2:59	In-Person Periods 4-6 4/5: 11:58 - 12:55 6th: 1:00 - 1:57 7th: 2:02 - 2:59	Virtual Periods 4-6 4/5: 11:58 - 12:55 6th: 1:00 - 1:57 7th: 2:02 - 2:59	In-Person Periods 4-6 4/5: 11:58 - 12:55 6th: 1:00 - 1:57 7th: 2:02 - 2:59	
Blue	A.M.	Virtual Periods 1-3 1st: 7:40 - 8:37 2nd: 8:42 - 9:39 3rd: 9:44 - 10:51	In-Person Periods 1-3 1st: 7:40 - 8:37 2nd: 8:42 - 9:39 3rd: 9:44 - 10:51	Virtual Periods 1-3 1st: 7:40 - 8:37 2nd: 8:42 - 9:39 3rd: 9:44 - 10:51	In-Person Periods 1-3 1st: 7:40 - 8:37 2nd: 8:42 - 9:39 3rd: 9:44 - 10:51	
	P.M.	In-Person Periods 4-6 4/5: 11:58 - 12:55 6th: 1:00 - 1:57 7th: 2:02 - 2:59	Virtual Periods 4-6 4/5: 11:58 - 12:55 6th: 1:00 - 1:57 7th: 2:02 - 2:59	In-Person Periods 4-6 4/5: 11:58 - 12:55 6th: 1:00 - 1:57 7th: 2:02 - 2:59	Virtual Periods 4-6 4/5: 11:58 - 12:55 6th: 1:00 - 1:57 7th: 2:02 - 2:59	

Week #3: September 7 - 11

Elementary Daily Schedule

Week #3: September 7 - 11

Monday	Tuesday	Wednesday	Thursday	Friday
No School for Students or Staff (Labor Day)	In-Person Full day 8:15-3:19	In-Person Full day 8:15-3:19	In-Person Full day 8:15-3:19	In-Person Full day 8:15-3:19

Middle School Daily Schedule

Week #3: September 7 - 11

		Monday	Tuesday	Wednesday	Thursday	Friday
Gold	A.M.	No School for Students or Staff Labor Day	In-Person Periods 1-3 1st: 8:00 - 8:59 2nd: 9:04 - 10:03 3rd: 10:08 - 11:06	Virtual Periods 1-3 1st: 8:00 - 8:59 2nd: 9:04 - 10:03 3rd: 10:08 - 11:06	In-Person Periods 1-3 1st: 8:00 - 8:59 2nd: 9:04 - 10:03 3rd: 10:08 - 11:06	Virtual Periods 1-3 1st: 8:00 - 8:59 2nd: 9:04 - 10:03 3rd: 10:08 - 11:06
	P.M.		Virtual Periods 4-6 4th: 11:46 - 12:44 5th: 12:49 - 1:48 6th: 1:53 - 2:52	In-Person Periods 4-6 4th: 11:46 - 12:44 5th: 12:49 - 1:48 6th: 1:53 - 2:52	Virtual Periods 4-6 4th: 11:46 - 12:44 5th: 12:49 - 1:48 6th: 1:53 - 2:52	In-Person Periods 4-6 4th: 11:46 - 12:44 5th: 12:49 - 1:48 6th: 1:53 - 2:52
Blue	A.M.		Virtual Periods 1-3 1st: 8:00 - 8:59 2nd: 9:04 - 10:03 3rd: 10:08 - 11:06	In-Person Periods 1-3 1st: 8:00 - 8:59 2nd: 9:04 - 10:03 3rd: 10:08 - 11:06	Virtual Periods 1-3 1st: 8:00 - 8:59 2nd: 9:04 - 10:03 3rd: 10:08 - 11:06	In-Person Periods 1-3 1st: 8:00 - 8:59 2nd: 9:04 - 10:03 3rd: 10:08 - 11:06
	P.M.		In-Person Periods 4-6 4th: 11:46 - 12:44 5th: 12:49 - 1:48 6th: 1:53 - 2:52	Virtual Periods 4-6 4th: 11:46 - 12:44 5th: 12:49 - 1:48 6th: 1:53 - 2:52	In-Person Periods 4-6 4th: 11:46 - 12:44 5th: 12:49 - 1:48 6th: 1:53 - 2:52	Virtual Periods 4-6 4th: 11:46 - 12:44 5th: 12:49 - 1:48 6th: 1:53 - 2:52

High School Daily Schedule

Week#3: September 7 - 11

		Monday	Tuesday	Wednesday	Thursday	Friday
Gold	A.M.	No School for Students or Staff Labor Day	In-Person Periods 1-3 1st: 7:40 - 8:37 2nd: 8:42 - 9:39 3rd: 9:44 - 10:51	Virtual Periods 1-3 1st: 7:40 - 8:37 2nd: 8:42 - 9:39 3rd: 9:44 - 10:51	In-Person Periods 1-3 1st: 7:40 - 8:37 2nd: 8:42 - 9:39 3rd: 9:44 - 10:51	Virtual Periods 1-3 1st: 7:40 - 8:37 2nd: 8:42 - 9:39 3rd: 9:44 - 10:51
	P.M.		Virtual Periods 4-6 4/5: 11:58 - 12:55 6th: 1:00 - 1:57 7th: 2:02 - 2:59	In-Person Periods 4-6 4/5: 11:58 - 12:55 6th: 1:00 - 1:57 7th: 2:02 - 2:59	Virtual Periods 4-6 4/5: 11:58 - 12:55 6th: 1:00 - 1:57 7th: 2:02 - 2:59	In-Person Periods 4-6 4/5: 11:58 - 12:55 6th: 1:00 - 1:57 7th: 2:02 - 2:59
Blue	A.M.		Virtual Periods 1-3 1st: 7:40 - 8:37 2nd: 8:42 - 9:39 3rd: 9:44 - 10:51	In-Person Periods 1-3 1st: 7:40 - 8:37 2nd: 8:42 - 9:39 3rd: 9:44 - 10:51	Virtual Periods 1-3 1st: 7:40 - 8:37 2nd: 8:42 - 9:39 3rd: 9:44 - 10:51	In-Person Periods 1-3 1st: 7:40 - 8:37 2nd: 8:42 - 9:39 3rd: 9:44 - 10:51
	P.M.		In-Person Periods 4-6 4/5: 11:58 - 12:55 6th: 1:00 - 1:57 7th: 2:02 - 2:59	Virtual Periods 4-6 4/5: 11:58 - 12:55 6th: 1:00 - 1:57 7th: 2:02 - 2:59	In-Person Periods 4-6 4/5: 11:58 - 12:55 6th: 1:00 - 1:57 7th: 2:02 - 2:59	Virtual Periods 4-6 4/5: 11:58 - 12:55 6th: 1:00 - 1:57 7th: 2:02 - 2:59

Elementary Schedules Beginning Week #4: September 14-18 Forward

This schedule will be in place every week moving forward until the district communicates a change.

Elementary Daily Schedule

Monday	Tuesday	Wednesday	Thursday	Friday
In-Person Full day 8:15-3:19	In-Person Full day 8:15-3:19	In-Person Full day 8:15-3:19	In-Person Full day 8:15-3:19	In-Person Full day 8:15-3:19

NOTE: There will be no school for Elementary Students on Friday, October 30.

Middle School Schedules Beginning Week #4: Sept. 14-18 Forward

This schedule will be in place every week moving forward until the district communicates a change.

Week #4: September 14 - 18

		Monday	Tuesday	Wednesday	Thursday	Friday
		Day 1	Day 2	Day 1	Day 2	Day 1
Gold	A.M.	In-Person Periods 1-3 1st: 8:00 - 8:59 2nd: 9:04 - 10:03 3rd: 10:08 - 11:06	Virtual Periods 1-3 1st: 8:00 - 8:59 2nd: 9:04 - 10:03 3rd: 10:08 - 11:06	All Virtual ----- Periods 1-6 1st: 8:00 - 8:59 2nd: 9:04 - 10:03 3rd: 10:08 - 11:06 4th: 11:46 - 12:44	In-Person Periods 1-3 1st: 8:00 - 8:59 2nd: 9:04 - 10:03 3rd: 10:08 - 11:06	Virtual Periods 1-3 1st: 8:00 - 8:59 2nd: 9:04 - 10:03 3rd: 10:08 - 11:06
	P.M.	Virtual Periods 4-6 4th: 11:46 - 12:44 5th: 12:49 - 1:48 6th: 1:53 - 2:52	In-Person Periods 4-6 4th: 11:46 - 12:44 5th: 12:49 - 1:48 6th: 1:53 - 2:52		Virtual Periods 4-6 4th: 11:46 - 12:44 5th: 12:49 - 1:48 6th: 1:53 - 2:52	In-Person Periods 4-6 4th: 11:46 - 12:44 5th: 12:49 - 1:48 6th: 1:53 - 2:52
Blue	A.M.	Virtual Periods 1-3 1st: 8:00 - 8:59 2nd: 9:04 - 10:03 3rd: 10:08 - 11:06	In-Person Periods 1-3 1st: 8:00 - 8:59 2nd: 9:04 - 10:03 3rd: 10:08 - 11:06	5th: 12:49 - 1:48 6th: 1:53 - 2:52 ----- All Students Virtual	Virtual Periods 1-3 1st: 8:00 - 8:59 2nd: 9:04 - 10:03 3rd: 10:08 - 11:06	In-Person Periods 1-3 1st: 8:00 - 8:59 2nd: 9:04 - 10:03 3rd: 10:08 - 11:06
	P.M.	In-Person Periods 4-6 4th: 11:46 - 12:44 5th: 12:49 - 1:48 6th: 1:53 - 2:52	Virtual Periods 4-6 4th: 11:46 - 12:44 5th: 12:49 - 1:48 6th: 1:53 - 2:52		In-Person Periods 4-6 4th: 11:46 - 12:44 5th: 12:49 - 1:48 6th: 1:53 - 2:52	Virtual Periods 4-6 4th: 11:46 - 12:44 5th: 12:49 - 1:48 6th: 1:53 - 2:52

Week #5: September 21 - 25

Times are the same as in Week #4		Monday	Tuesday	Wednesday	Thursday	Friday
		Day 1	Day 2	Day 2	Day 2	Day 1
Gold	A.M.	In-Person Periods 1-3	Virtual Periods 1-3	All Virtual ----- Periods 1-6 1st: 8:00 - 8:59 2nd: 9:04 - 10:03 3rd: 10:08 - 11:06 4th: 11:46 - 12:44 5th: 12:49 - 1:48 6th: 1:53 - 2:52 ----- All Students Virtual	In-Person Periods 1-3	Virtual Periods 1-3
	P.M.	Virtual Periods 4-6	In-Person Periods 4-6		Virtual Periods 4-6	In-Person Periods 4-6
Blue	A.M.	Virtual Periods 1-3	In-Person Periods 1-3		Virtual Periods 1-3	In-Person Periods 1-3
	P.M.	In-Person Periods 4-6	Virtual Periods 4-6		In-Person Periods 4-6	Virtual Periods 4-6

Week #6: September 28 - October 2

Times are the same as in Week #4		Monday	Tuesday	Wednesday	Thursday	Friday
		Day 1	Day 2	Day 1	Day 2	Day 1
Gold	A.M.	In-Person Periods 1-3	Virtual Periods 1-3	All Virtual ----- Periods 1-6 1st: 8:00 - 8:59 2nd: 9:04 - 10:03 3rd: 10:08 - 11:06 4th: 11:46 - 12:44 5th: 12:49 - 1:48 6th: 1:53 - 2:52 ----- All Students Virtual	In-Person Periods 1-3	Virtual Periods 1-3
	P.M.	Virtual Periods 4-6	In-Person Periods 4-6		Virtual Periods 4-6	In-Person Periods 4-6
Blue	A.M.	Virtual Periods 1-3	In-Person Periods 1-3		Virtual Periods 1-3	In-Person Periods 1-3
	P.M.	In-Person Periods 4-6	Virtual Periods 4-6		In-Person Periods 4-6	Virtual Periods 4-6

Week #7: October 5 - 9

Times are the same as in Week #4		Monday	Tuesday	Wednesday	Thursday	Friday
		Day 1	Day 2	Day 2	Day 2	Day 1
Gold	A.M.	In-Person Periods 1-3	Virtual Periods 1-3	All Virtual ----- Periods 1-6 1st: 8:00 - 8:59 2nd: 9:04 - 10:03 3rd: 10:08 - 11:06 4th: 11:46 - 12:44 5th: 12:49 - 1:48 6th: 1:53 - 2:52 ----- All Students Virtual	In-Person Periods 1-3	Virtual Periods 1-3
	P.M.	Virtual Periods 4-6	In-Person Periods 4-6		Virtual Periods 4-6	In-Person Periods 4-6
Blue	A.M.	Virtual Periods 1-3	In-Person Periods 1-3	All Students Virtual	Virtual Periods 1-3	In-Person Periods 1-3
	P.M.	In-Person Periods 4-6	Virtual Periods 4-6		In-Person Periods 4-6	Virtual Periods 4-6

Week #8: October 12-16

Times are the same as in Week #4		Monday	Tuesday	Wednesday	Thursday	Friday
		Day 1	Day 2	Day 1	Day 2	Day 1
Gold	A.M.	In-Person Periods 1-3	Virtual Periods 1-3	All Virtual ----- Periods 1-6 1st: 8:00 - 8:59 2nd: 9:04 - 10:03 3rd: 10:08 - 11:06 4th: 11:46 - 12:44 5th: 12:49 - 1:48 6th: 1:53 - 2:52 ----- All Students Virtual	In-Person Periods 1-3	Virtual Periods 1-3
	P.M.	Virtual Periods 4-6	In-Person Periods 4-6		Virtual Periods 4-6	In-Person Periods 4-6
Blue	A.M.	Virtual Periods 1-3	In-Person Periods 1-3	All Students Virtual	Virtual Periods 1-3	In-Person Periods 1-3
	P.M.	In-Person Periods 4-6	Virtual Periods 4-6		In-Person Periods 4-6	Virtual Periods 4-6

Week #9: October 19-23

Times are the same as in Week #4		Monday	Tuesday	Wednesday	Thursday	Friday
		Day 1	Day 2	Day 2	Day 2	Day 1
Gold	A.M.	In-Person Periods 1-3	Virtual Periods 1-3	All Virtual ----- Periods 1-6 1st: 8:00 - 8:59 2nd: 9:04 - 10:03 3rd: 10:08 - 11:06 4th: 11:46 - 12:44 5th: 12:49 - 1:48 6th: 1:53 - 2:52 ----- All Students Virtual	In-Person Periods 1-3	Virtual Periods 1-3
	P.M.	Virtual Periods 4-6	In-Person Periods 4-6		Virtual Periods 4-6	In-Person Periods 4-6
Blue	A.M.	Virtual Periods 1-3	In-Person Periods 1-3	All Students Virtual	Virtual Periods 1-3	In-Person Periods 1-3
	P.M.	In-Person Periods 4-6	Virtual Periods 4-6		In-Person Periods 4-6	Virtual Periods 4-6

Week #10: October 26-30

Times are the same as in Week #4		Monday	Tuesday	Wednesday	Thursday	Friday
		Day 1	Day 2	Day 1	Day 2	No School
Gold	A.M.	In-Person Periods 1-3	Virtual Periods 1-3	All Virtual ----- Periods 1-6 1st: 8:00 - 8:59 2nd: 9:04 - 10:03 3rd: 10:08 - 11:06 4th: 11:46 - 12:44 5th: 12:49 - 1:48 6th: 1:53 - 2:52 ----- All Students Virtual	In-Person Periods 1-3	P/T Conf. No School for Students
	P.M.	Virtual Periods 4-6	In-Person Periods 4-6		Virtual Periods 4-6	No School for Students
Blue	A.M.	Virtual Periods 1-3	In-Person Periods 1-3	All Students Virtual	Virtual Periods 1-3	P/T Conf. No School for Students
	P.M.	In-Person Periods 4-6	Virtual Periods 4-6		In-Person Periods 4-6	No School for Students

This schedule will be in place every week moving forward until the district communicates a change.

High School Schedules Beginning Week #4: Sept. 14-18 Forward

This schedule will be in place every week moving forward until the district communicates a change.

Week #4: September 14 - 18

		Monday	Tuesday	Wednesday	Thursday	Friday
Gold	A.M.	In-Person Periods 1-3 1st: 7:40 - 8:37 2nd: 8:42 - 9:39 3rd: 9:44 - 10:51	Virtual Periods 1-3 1st: 7:40 - 8:37 2nd: 8:42 - 9:39 3rd: 9:44 - 10:51	All Virtual Periods 1-7 1st: 7:40 - 8:37 2nd: 8:42 - 9:39 3rd: 9:44 - 10:51 4/5: 11:58 - 12:55	In-Person Periods 1-3 1st: 7:40 - 8:37 2nd: 8:42 - 9:39 3rd: 9:44 - 10:51	Virtual Periods 1-3 1st: 7:40 - 8:37 2nd: 8:42 - 9:39 3rd: 9:44 - 10:51
	P.M.	Virtual Periods 4/5-7 4/5: 11:58 - 12:55 6th: 1:00 - 1:57 7th: 2:02 - 2:59	In-Person Periods 4/5-7 4/5: 11:58 - 12:55 6th: 1:00 - 1:57 7th: 2:02 - 2:59		Virtual Periods 4/5-7 4/5: 11:58 - 12:55 6th: 1:00 - 1:57 7th: 2:02 - 2:59	In-Person Periods 4/5-7 4/5: 11:58 - 12:55 6th: 1:00 - 1:57 7th: 2:02 - 2:59
Blue	A.M.	Virtual Periods 1-3 1st: 7:40 - 8:37 2nd: 8:42 - 9:39 3rd: 9:44 - 10:51	In-Person Periods 1-3 1st: 7:40 - 8:37 2nd: 8:42 - 9:39 3rd: 9:44 - 10:51	6th: 1:00 - 1:57 7th: 2:02 - 2:59 All Students Virtual	Virtual Periods 1-3 1st: 7:40 - 8:37 2nd: 8:42 - 9:39 3rd: 9:44 - 10:51	In-Person Periods 1-3 1st: 7:40 - 8:37 2nd: 8:42 - 9:39 3rd: 9:44 - 10:51
	P.M.	In-Person Periods 4/5-7 4/5: 11:58 - 12:55 6th: 1:00 - 1:57 7th: 2:02 - 2:59	Virtual Periods 4/5-7 4/5: 11:58 - 12:55 6th: 1:00 - 1:57 7th: 2:02 - 2:59		In-Person Periods 4/5-7 4/5: 11:58 - 12:55 6th: 1:00 - 1:57 7th: 2:02 - 2:59	Virtual Periods 4/5-7 4/5: 11:58 - 12:55 6th: 1:00 - 1:57 7th: 2:02 - 2:59

Week #5: September 21 - 25

See Week #4 for Times		Monday	Tuesday	Wednesday	Thursday	Friday
Gold	A.M.	In-Person Periods 1-3	Virtual Periods 1-3	All Virtual ----- Periods 1-7 1st: 7:40 - 8:37 2nd: 8:42 - 9:39 3rd: 9:44 - 10:51 4/5: 11:58 - 12:55 6th: 1:00 - 1:57 7th: 2:02 - 2:59 ----- All Students Virtual	In-Person Periods 1-3	Virtual Periods 1-3
	P.M.	Virtual Periods 4/5-7	In-Person Periods 4/5-7		Virtual Periods 4/5-7	In-Person Periods 4/5-7
Blue	A.M.	Virtual Periods 1-3	In-Person Periods 1-3		Virtual Periods 1-3	In-Person Periods 1-3
	P.M.	In-Person Periods 4/5-7	Virtual Periods 4/5-7		In-Person Periods 4/5-7	Virtual Periods 4/5-7

Note: Wednesday, September 23, Seniors will be taking the SAT and Freshmen the PSAT 9. Sophomores and Juniors will attend school virtually with asynchronous lessons. Additional information can be found [HERE](#).

Week #6: September 28 - October 2

See Week #4 for Times		Monday	Tuesday	Wednesday	Thursday	Friday
Gold	A.M.	In-Person Periods 1-3	Virtual Periods 1-3	All Virtual ----- Periods 1-7 1st: 7:40 - 8:37 2nd: 8:42 - 9:39 3rd: 9:44 - 10:51 4/5: 11:58 - 12:55 6th: 1:00 - 1:57 7th: 2:02 - 2:59 ----- All Students Virtual	In-Person Periods 1-3	Virtual Periods 1-3
	P.M.	Virtual Periods 4/5-7	In-Person Periods 4/5-7		Virtual Periods 4/5-7	In-Person Periods 4/5-7
Blue	A.M.	Virtual Periods 1-3	In-Person Periods 1-3		Virtual Periods 1-3	In-Person Periods 1-3
	P.M.	In-Person Periods 4/5-7	Virtual Periods 4/5-7		In-Person Periods 4/5-7	Virtual Periods 4/5-7

Week #7: October 5 - 9

See Week #4 for Times		Monday	Tuesday	Wednesday	Thursday	Friday
Gold	A.M.	In-Person Periods 1-3	Virtual Periods 1-3	All Virtual ----- Periods 1-7 1st: 7:40 - 8:37 2nd: 8:42 - 9:39 3rd: 9:44 - 10:51 4/5: 11:58 - 12:55 6th: 1:00 - 1:57 7th: 2:02 - 2:59 ----- All Students Virtual	In-Person Periods 1-3	Virtual Periods 1-3
	P.M.	Virtual Periods 4/5-7	In-Person Periods 4/5-7		Virtual Periods 4/5-7	In-Person Periods 4/5-7
Blue	A.M.	Virtual Periods 1-3	In-Person Periods 1-3		Virtual Periods 1-3	In-Person Periods 1-3
	P.M.	In-Person Periods 4/5-7	Virtual Periods 4/5-7		In-Person Periods 4/5-7	Virtual Periods 4/5-7

Week #8: October 12 - 16

See Week #4 for Times		Monday	Tuesday	Wednesday	Thursday	Friday
Gold	A.M.	In-Person Periods 1-3	Virtual Periods 1-3	All Virtual ----- Periods 1-7 1st: 7:40 - 8:37 2nd: 8:42 - 9:39 3rd: 9:44 - 10:51 4/5: 11:58 - 12:55 6th: 1:00 - 1:57 7th: 2:02 - 2:59 ----- All Students Virtual	In-Person Periods 1-3	Virtual Periods 1-3
	P.M.	Virtual Periods 4/5-7	In-Person Periods 4/5-7		Virtual Periods 4/5-7	In-Person Periods 4/5-7
Blue	A.M.	Virtual Periods 1-3	In-Person Periods 1-3		Virtual Periods 1-3	In-Person Periods 1-3
	P.M.	In-Person Periods 4/5-7	Virtual Periods 4/5-7		In-Person Periods 4/5-7	Virtual Periods 4/5-7

Week #9: October 19 - 23

See Week #4 for Times		Monday	Tuesday	Wednesday	Thursday	Friday
Gold	A.M.	In-Person Periods 1-3	Virtual Periods 1-3	All Virtual ----- Periods 1-7 1st: 7:40 - 8:37 2nd: 8:42 - 9:39 3rd: 9:44 - 10:51 4/5: 11:58 - 12:55 6th: 1:00 - 1:57 7th: 2:02 - 2:59 ----- All Students Virtual	In-Person Periods 1-3	Virtual Periods 1-3
	P.M.	Virtual Periods 4/5-7	In-Person Periods 4/5-7		Virtual Periods 4/5-7	In-Person Periods 4/5-7
Blue	A.M.	Virtual Periods 1-3	In-Person Periods 1-3	All Virtual ----- Periods 1-7 1st: 7:40 - 8:37 2nd: 8:42 - 9:39 3rd: 9:44 - 10:51 4/5: 11:58 - 12:55 6th: 1:00 - 1:57 7th: 2:02 - 2:59 ----- All Students Virtual	Virtual Periods 1-3	In-Person Periods 1-3
	P.M.	In-Person Periods 4/5-7	Virtual Periods 4/5-7		In-Person Periods 4/5-7	Virtual Periods 4/5-7

Week #10: October 26 - 30

See Week #4 for Times		Monday	Tuesday	Wednesday	Thursday	Friday
Gold	A.M.	In-Person Periods 1-3	Virtual Periods 1-3	All Virtual ----- Periods 1-7 1st: 7:40 - 8:37 2nd: 8:42 - 9:39 3rd: 9:44 - 10:51 4/5: 11:58 - 12:55 6th: 1:00 - 1:57 7th: 2:02 - 2:59 ----- All Students Virtual	In-Person Periods 1-3	Virtual Periods 1-3
	P.M.	Virtual Periods 4/5-7	In-Person Periods 4/5-7		Virtual Periods 4/5-7	In-Person Periods 4/5-7
Blue	A.M.	Virtual Periods 1-3	In-Person Periods 1-3	All Virtual ----- Periods 1-7 1st: 7:40 - 8:37 2nd: 8:42 - 9:39 3rd: 9:44 - 10:51 4/5: 11:58 - 12:55 6th: 1:00 - 1:57 7th: 2:02 - 2:59 ----- All Students Virtual	Virtual Periods 1-3	In-Person Periods 1-3
	P.M.	In-Person Periods 4/5-7	Virtual Periods 4/5-7		In-Person Periods 4/5-7	Virtual Periods 4/5-7

Note: Thursday, October 29, Sophomores and Juniors will take the PSAT/NMSQT. Freshmen and Seniors will attend school virtually with asynchronous lessons.

This schedule will be in place every week moving forward until the district communicates a change.

SPECIAL POPULATIONS

East Grand Rapids Public Schools continues to recognize that supporting the whole child is imperative to student growth and learning. Through the Multi-Tiered Systems of Support (MTSS), EGRPS will continue to implement programs and interventions to address the academic, behavioral, and wellness needs of our students. Whether a student is receiving synchronous and asynchronous instruction, in-school or online, academic support through whole-group and small-group instruction (Tier 1) will be provided. If needed, students will receive more intensive small group or individual student intervention (Tiers 2 and 3). Schools will leverage resources and tools for systematic data collection, ongoing progress monitoring, and timely intervention. Support staff and resource teachers, including school counselors, psychologists, and social workers, will work flexibly across the school to address student needs.

Students with disabilities, students with Section 504 plans, and English Language Learners will be given special consideration to ensure appropriate instruction while complying with federal and state requirements.

Students with Disabilities

Special education services for students with disabilities will include increased time for synchronous instruction and explicit expectations for greater student engagement and consistency. Instructional delivery will be designed to ensure the least restrictive environment (LRE) as required by the individualized education program (IEP). Based on the student's IEP, specialized instruction will be provided in-person, when possible. Students will continue to receive access to instructional materials for use at home, as needed, including assistive technology tools. When necessary and possible, virtual meetings will be used to convene special education procedural meetings, such as reevaluation, eligibility, IEP teams, etc. Students opting into Pioneer Virtual Learning will continue to receive their special education services from EGRPS.

Students with Section 504 & Medical/Health Plans

In synchronous and asynchronous learning settings, students eligible for Section 504 plans will continue receiving their accommodations and other supports needed including additional time for synchronous, small group or individual instruction. Students will continue to receive access to instructional materials for use at home, as needed. When necessary and possible, virtual meetings will be utilized to convene Section 504 procedural meetings such as reevaluation, eligibility, review, etc. The school will continue to support students with specific medical/health plans.

English Language Learners

Children who speak a language other than English in their home, or have a different native language, are given the opportunity to enrich their learning with a highly qualified teacher of English Language Learners (ELL). Individual and group support is provided to help our students become acclimated both socially and academically. English Language Learner support and services will continue during all learning models.

Elementary Reading Intervention

Based on literacy assessment data, intervention services for students reading below grade level expectations will be provided during in-person and E-Learning structures. This will include additional time for synchronous, small group or individual instruction. Students will continue to receive access to instructional materials for use at home, as needed, including appropriately leveled text. When necessary and possible, virtual meetings will be utilized for initial and follow-up Reading Growth Plan meetings. Students opting into Pioneer Virtual Learning will not receive Reading Intervention services through EGRPS.

HEALTH & SAFETY

Overview of Protocols

<ul style="list-style-type: none"> ● Required by Roadmap ● Strongly Recommended by Roadmap 	Phases 1-3 E-Learning	Phases 4 and 5 Cohort, Hybrid, & Full In-Person	Phase 6 Traditional
Instruction	<ul style="list-style-type: none"> ● All EGRPS buildings are closed and all learning is conducted remotely ● Pioneer Virtual Learning: Full virtual learning available by request 	<ul style="list-style-type: none"> ● In-person learning at all levels with health and safety protocols ● Pioneer Virtual Learning: Full virtual learning available by request 	<ul style="list-style-type: none"> ● Normal In-person learning ● Pioneer Virtual Learning: Full virtual learning available by request
Physical Environment	<ul style="list-style-type: none"> ● Not Applicable 	<ul style="list-style-type: none"> ● Spacing to extent possible 	<ul style="list-style-type: none"> ● Traditional
Student Cohorting	<ul style="list-style-type: none"> ● Not Applicable 	<ul style="list-style-type: none"> ● By classroom K-5 ● May not bring together students from more than one class (indoors) 	<ul style="list-style-type: none"> ● Traditional
PPE, Handwashing, & Ventilation	<ul style="list-style-type: none"> ● Not Applicable 	<ul style="list-style-type: none"> ● Masks required for staff everywhere, except when eating ● Masks required for 6-12 students everywhere, except when eating ● EGRPS will require K-5 students to wear masks. K-5 mask breaks provided with social distancing ● Handwashing every 2 to 3 hours ● Increased air circulation 	<ul style="list-style-type: none"> ● Traditional

Cleaning & Disinfecting	<ul style="list-style-type: none"> ● Routine cleaning 	<ul style="list-style-type: none"> ● Every 4 hours frequently touched surfaces ● Desks after every class period ● Normal routine cleaning for playgrounds ● Individualized student supplies/materials with cleaning of high use and shared materials ● UVC Disinfection Machines (elementary weekly / secondary as needed) 	<ul style="list-style-type: none"> ● Routine cleaning
Symptom Screening	<ul style="list-style-type: none"> ● Not Applicable 	<ul style="list-style-type: none"> ● At-home screening for staff and students prior to attending school (each day) ● Report to school/supervisor symptoms and/or positive test result for a student, staff member, or for an individual with whom the individual lives 	<ul style="list-style-type: none"> ● None
Food Service & Distribution	<ul style="list-style-type: none"> ● Available to families in need 	<ul style="list-style-type: none"> ● Eat-in as a single class (e.g. in classrooms) ● Sack or pre-packaged lunch; No hot lunch ● Grades 6-12: Shortened lunch time with earlier dismissal in the afternoon ● Closed campus at high school 	<ul style="list-style-type: none"> ● Traditional
Athletics & Extra-Curriculars	<ul style="list-style-type: none"> ● Not Applicable 	<ul style="list-style-type: none"> ● Masks required on buses, at events, and in game & practices for most sports ● Indoor and outdoor spectator events limited in number of spectators in attendance 	<ul style="list-style-type: none"> ● Traditional

Personal Protective Equipment (PPE)

All students and staff will be required to wear face masks during their time in the classrooms and hallways. The requirement to wear face masks in Michigan has resulted in the near universal supply of masks among students and faculty. The fit, feel, and style of a family provided mask will likely lead to greater comfort over the course of a school day. Therefore, all families are encouraged to secure the preferred style of mask best suited to the needs of their children. Ideally, students will have both a primary and secondary mask on them each school day. Reusable masks must be washed at home each day and disposable masks but must be discarded daily.

It is understood that there will be situations in which a mask is forgotten, lost, or damaged. The district will have ample supply of masks readily available to meet the needs that arise throughout the school day. The district will also be prepared to support students with reusable masks as specific circumstances require.

Students are encouraged to carry a personal size hand sanitizer with them between school and home. As hand washing with soap and water is most effective, this will be taught as a best practice and scheduled by elementary classroom teachers prior to lunch. A 60% or higher alcohol based hand sanitizer will be provided in every classroom, office, and common space.

If a student or faculty member presents with COVID-19 symptoms during the school day, they will be asked to wear an N95 mask as recommended in the Return to Learning Roadmap. Otherwise, N95 masks will not be utilized to ensure maximum supplies are available for hospitals and first responders.

Classroom PPE Tool Kit

All staff interacting with students will be provided an initial supply of PPE, cleaning supplies, and other resources for themselves and students. These items will be replenished as needed. The identified cleaning supplies, soaps, and hand sanitizers have been selected to ensure they comply with CDC and other standards and to prevent unintended consequences such as undesirable fragrances to the greatest extent feasible. Fragrance-free has been an operational goal as products have been identified and this approach will be maintained as stock is replenished (unless shortages prevent it).

Face Coverings

The MI Safe Return to School Roadmap requires all staff and students in grades 6-12 to wear face coverings at all times, except when eating or drinking or when not medically viable. The Roadmap requires K-5 students to wear face coverings outside of the classroom and strongly recommends K-5 students wear them in the classroom. EGRPS will require K-5 students to wear masks both in and outside of the classroom as an additional precaution. EGRPS may make adjustments to this requirement as conditions warrant. Teachers will provide mask breaks to students with necessary social distancing. The CDC recommends cloth face coverings as a simple barrier to help prevent respiratory droplets from traveling into the air and onto other people when the person wearing the cloth face covering coughs, sneezes, talks, or raises their voice. The district will make face masks available to both staff and students; however, families are encouraged to supply their own masks so students can wear their preferred fit/style.

Cleaning & Disinfecting

The district is committed to ensuring that intensified cleaning occurs in compliance with the Return to School Roadmap, industry standards, and best practices. To accomplish this mission, every employee will play an important role in ensuring the spaces they work in are maintained and cleaned throughout the day. The district is also investing in additional custodial staffing and is actively recruiting individuals to fill four additional cleaning positions that will be focused on day-time cleaning. The following summary of cleaning protocols will occur each school day:

Supplies:

- The district will use an EPA-approved disinfectant specifically listed for use against [SARS-CoV-2 \(COVID-19\) \(List N\)](#)
- Every classroom will be equipped with a towelette bucket system with the selected disinfectant.
- Every classroom will be equipped with a spray bottle of the same disinfectant.
- All disinfectants will be clearly labeled

Starting Clean

- Each building will be thoroughly cleaned each evening and students and staff will arrive to clean classrooms.
- The HVAC operation schedule has been extended to provide for after hours operation to fully exchange the indoor air with outdoor air.

General Cleaning Standards

- The HVAC operation schedule has been modified to increase fresh/outdoor air exchanges by approximately 100% during the school day. This is universally true across the district except in select spaces where a smaller increase is limited due to mechanical design.
- Teachers will clean frequently touched surfaces in the classroom including light switches, doors, tables, desks at least every four hours at the elementary level.
- Teachers will clean frequently touched surfaces in the classroom including light switches, doors, tables, desks between each class at the secondary level.
- Custodial staff will clean each bathroom at least one time during the day. Such schedules may involve the cleaning of classroom bathrooms during instruction.
- Custodial staff will clean and disinfect common spaces consistent at least every four hours at all levels.

Elementary Classroom Supplies

The suggested back-to-school supplies listed on each elementary buildings' website are for individual use only. Families are asked to label all student supplies with each child's first name and last initial to further support this goal. Frequently used items within the classroom will be assigned to individual students and used exclusively by that student only throughout the school day whenever possible (e.g. some textbooks, devices, etc.). Other items within the classroom will be cleaned, disinfected, and/or sanitized as required per the Return to School Roadmap.

Screening for COVID-19 Symptoms

Parents/guardians will be provided information on how to screen their child(ren) at home for COVID-19 each day before arriving at school. Screening for COVID-19 symptoms includes temperature taking and checking for specific [COVID-19 symptoms](#) as defined by the Center for Disease Control (CDC). In its July 23, 2020, guidance for schools, the CDC does not currently recommend universal symptom screening (screening all students grades K-12) be conducted by and at school. As a result, parents or caregivers are strongly encouraged to monitor their children for signs of infectious illness every day. Students who are sick should not attend school in-person. Symptom screening will identify only that a person may have an illness, not that the illness is COVID-19. Many of the symptoms of COVID-19 are also common in other childhood illnesses like the common cold, the flu, or seasonal allergies. Of utmost importance, is that students stay home when sick until at least 24 hours after they no longer have a fever (temperature of 100.4 or higher) or signs of a fever (chills, feeling very warm, flushed appearance, or sweating) without the use of fever-reducing medicine (e.g., Tylenol).

EGRPS employees will also screen for symptoms before arriving to work in the district. Employees and parents/guardians of children exhibiting unexplained COVID-19 symptoms, testing positive for COVID-19, or in close contact with a COVID-19 infected person should immediately contact the building administrator/building secretary.

COVID-19 Protocols

The protocols articulated in the EGRPS Return to Learning Plan are based on guidance from the Kent County Health Department (KCHD) and the Center for Disease Control (CDC). The KCHD provides daily guidance in this area to Kent County Schools through its School Tool Kit. Data and science about COVID-19 changes daily, thus, the information conveyed in the plan is subject to change based on recommendations from the KCHD and/or the CDC.

Every COVID-19 related situation is unique and will require individualized analysis in regard to the precise steps and communications for implementation. Nevertheless, the graphic displayed provides a general overview of procedures and protocols related to a student or staff member presenting with COVID-19 symptoms, presenting with a positive COVID-19 test, and/or have close contact with a person testing positive for COVID-19. The CDC defines “close contact” as any individual within six feet of an infected person for at least 15 minutes with or without a mask, indoors or outdoors.

Reporting a COVID-19 Concern

If a family has a member with a positive COVID-19 case or other COVID-19 concerns, the Parent/Guardian should contact their child’s building principal as soon as possible.

SOCIAL EMOTIONAL HEALTH & WELLNESS

The direct and indirect impacts of the COVID-19 pandemic are expected to have a lasting and immeasurable effect on students. Social emotional health and wellbeing often are hidden under the surface and not discussed. Our children carry emotions they often are unable to verbalize. Due to the difficulty in being able to “see” and know how each child is doing, we are building intentional opportunities to keep a watchful eye and have a proactive approach to supporting all of our learners. EGRPS will reinforce and enhance curriculum and supports focused on social-emotional learning, relationship-building, and successful transitions, whether in-person or through intermittent remote learning. It is critical that parents continue to reach out to staff when/if their child is experiencing stress, anxiety, trauma, depression, etc. so that we may work together as a team to support their child. We continue to collaborate with Spectrum Health and the Kent County Health Department on all facets of our reopening plan and building resources and supports for our students in the area of mental and behavioral health. Through this local and county work, we are building mental and behavioral health resources and partnerships that will offer another critical layer of support for students, families, and staff.



TECHNOLOGY & CONNECTIVITY

Consistent student access to reliable computer devices and internet connection is an important requirement to every aspect of the Return to Learning Plan. Teachers and students will depend on these technology tools in varying degrees depending on the MI Safe Start Phase the district is operating under at any given time. The district is well positioned for the various scenarios given the prior commitment to the Engage 1:1 program over the last decade, and the successful 2014 bond that supported robust purchases of student devices K-5. While the pandemic has created disruptions and shortages in the marketplace for new device purchases, this plan incorporates utilizing our existing “Bring Your Own Device” model at grades 6-12 to ensure adequate devices can support the plan. The following information details the basic organizational needs and specific plans for devices at the elementary and secondary levels depending on the MI Safe Start Phase.

Resource Limitations

The district does not presently own enough devices to provide every child with a device at home. The district has placed an order for additional devices to supplement our current fleet of 1400 devices; however, it is possible these additional devices will not be delivered until after the start of the school year. Expanding the district fleet of devices to 2900 would be significantly cost prohibitive even if such quantities were available. The district is confident, however, that the combination of our grades 6-12 “Bring Your Own Device” model combined with our elementary classroom device carts will provide adequate resources for success in each phase.

Phase Specific Details

The following outlines the various phase specific plans by school level:

Elementary School Students Grades K-5

Collecting Elementary Family Device Needs

Understanding the needs of elementary families will be essential to developing an organized distribution plan and ensuring adequate support can be provided if the district is required to rapidly change phases as a result of an executive order, local health department directive, or district decision to temporarily close a school or the entire district. Therefore, all elementary families will be surveyed during the registration process to gather how their students will utilize the various options available by phase and level.

Phases 1-3

In Phases 1-3, schools are closed and E-Learning will occur at home. Devices normally used at school may be temporarily checked out for use at home if a family does not have a device available to support the E-Learning plan. Pre-registration for checkout is required and families are responsible for lost or damaged devices. Depending on the timing and circumstances of the district going into Phase 3 or below, the process for picking up the device will be communicated to families at that time. Distribution of devices might involve students carrying the device home from school at the end of a school day or parents picking up the device from their child’s school

during a specific window of time. The scale and pragmatics of a large scale distribution program can be challenging and it would be the goal to distribute devices to all families within 2 weekdays or less.

When the district transitions from Phase 3 to Phase 4, the checked out device will need to be returned for in school use on the day in-person instruction resumes.

Phases 4-5

In Phases 4 and 5, elementary students will attend school in cohorts. Each child will be assigned a school owned computer device that is used exclusively by them throughout the school day. This device will be checked out to each student using our inventory database at the beginning of the school year to support the program. If a device needs repair, the replacement device used by the student will be cleaned immediately before being used according to standard cleaning procedures for computer equipment. These school owned devices will remain in classroom carts consistent with pre-pandemic practices. Similarly, any homework assigned would be completed using a family owned device.

If a short-term school closure occurs for any reason, an individual analysis of the circumstances of the closure's expected length will occur and a determination of whether a device distribution to families is warranted. In general, if a closure of 2 days or less is announced, a device distribution would likely not be scheduled. Conversely, a closure of more than 3 days would lead to a distribution process being mobilized. Such procedures, times, and locations would be communicated directly to families when decisions are made. When the short-term closure concludes, school owned devices need to be returned the day in-person instruction resumes and would remain at school going forward.

It is important to remember that the above short-term closure scenarios are examples only and the actual operating conditions will be assessed at the time to make distribution determinations using the best available information.

Phase 6

In Phase 6, technology procedures would return to what they were pre-pandemic. Any structural changes that might be considered due to the present operating conditions would be considered and communicated at that time.

Changes in Family Device Circumstances

A family that begins the year using a district device at home may elect to discontinue participation in the district device program at any time. Conversely, a family that begins the year using a family owned device may opt into the district device program at any time. Elementary families should email support@egrps.org any time a change is needed.

Secondary Students Grades 6-12

Bring Your Own Device (BYOD) Program

The nearly decade old district Bring Your Own Device (BYOD) Program remains an integral part of the district's technology plan. Starting in 6th grade, all students start to carry their own device back and forth between school and home on a daily basis. Most commonly, these devices are existing family devices or devices purchased by families for this purpose. Every family also has the option to participate in the District Device Program. The process for participating in the District Device Program for the 2020-21 school year has already been communicated to all families and remains unchanged. Families interested in this program can learn more by following this link: [District Device Program](#).

Phases 1-3

In Phases 1-3, schools are closed and E-Learning will occur at home. Students will use their "Bring Their Own Device" or District Device Program device to participate in E-Learning.

Phases 4-5

In Phases 4-6, a variety of schedule formats may occur. Regardless of whether the format is a hybrid schedule, full in-person schedule, or temporary closure situation, students will use their "Bring Their Own Device" or District Device Program device to support in-person instruction or E-Learning.

Phase 6

In Phase 6, technology procedures would return to what they were pre-pandemic. Any structural changes that might be considered due to the present operating conditions would be considered and communicated at that time.

Pioneer Virtual Learning Plan

Families opting to participate in the Pioneer Virtual Learning plan will have access to the District Device Program consistent with all students. Families will be surveyed about their device needs as part of the Pioneer Virtual Learning sign-up process. District devices will require parents/guardians to sign a device agreement and accept responsibility for loss or damages.

Internet Connectivity

Reliable internet is a critical component to ensuring that hybrid and E-Learning days are successful for all students. The district surveyed families extensively during the spring of 2020 to ensure every family had internet access. These surveys and follow-up phone calls confirmed a response for every student enrolled in the district. The registration process for the 2020-21 school year will again assess family internet access and the district will further support all families in need. This support may include consultation about internet options, district device troubleshooting, and an internet connection scholarship if needed. Families may email support@egrps.org throughout the year to make inquiries regarding these supports or to communicate changes in status. If email is unavailable, please call your building administrator and they will facilitate the start of the process.

FOOD SERVICE

General Overview

Food service operations under the Return to Learning Plan are designed to ensure compliance and adherence to all required safety protocols under the MI Safe Start Phase and MI Safe Return to School Roadmap.

As school lunch is the least structured and most social part of a child's school day, it is also the most challenging time to ensure essential safety protocols are consistently followed. It is recognized that the plans below will greatly diminish the social experience students need as part of their regular routines. Concerted efforts will be made at all levels to offset the loss of lunch social time to the greatest degree possible. These efforts will likely come together as teachers and students collaborate within their lunch cohorts.

Phases 1-3 Overview

If the state is in Phases 1-3 of the MI Safe Start plan, the district will be closed and learning will be done remotely. Lunches will be available to all families eligible for free and reduced lunch.

Elementary

Pre-packaged sack lunches will be available to all families eligible for free or reduced lunch at no charge. Families will pick-up weekly meals twice a week on Mondays and Thursdays from the middle school. Similar to the spring food service program, families with transportation needs or limitations may request meal delivery and efforts will be made to support such accommodations.

Hot lunch options and meal sales will be suspended.

MS & HS

Pre-packaged sack lunches will be available to all families eligible for free or reduced lunch at no charge. Families will pick-up weekly meals twice a week on Mondays and Thursdays from the middle school. Similar to the spring food service program, families with transportation needs or limitations may request meal delivery and efforts will be made to support such accommodations.

Hot lunch options and meal sales will be suspended.

Phases 4-5 Overview

Elementary

Pre-packaged sack lunches will be available to all families eligible for free or reduced lunch at no charge and every family may pre-order the same lunch or milk using an online form. The online form will accept orders one week at a time and the link will be published in all school newsletters. Families not electing to order a lunch from school should send a pre-packaged lunch from home which does not require any preparation. Water, napkins, utensils, condiments, and all other lunch elements should be packed with the lunch. Families are encouraged to practice the "pack it in, pack it out" philosophy and

this practice will be taught and encouraged at school. School lunches will be delivered to students as close as practical to the lunch period as possible.

All elementary students will eat lunch in their classroom, at their desks, under the supervision of their classroom teacher. Student masks will be removed only while students eat. Teachers may read to students, show videos, and generally provide whatever instruction or interaction feasible while students eat. Following the lunch period, all students will be provided a 45 minutes outdoor recess while teachers are provided an opportunity for lunch.

MS & HS

Due to the present guidelines related to older students, Phase 4 and 5 is more complex for secondary students than it is for elementary students. Several different operating models will be utilized based on the overall school operating conditions. To ensure clarity, the different models have been identified consistent with the learning models described above:

6-12 Hybrid In-Person Learning Food Service Plan

As students are in school only half of a day, students will eat lunch at home. The cafeteria and other commons spaces will be closed during lunch consistent with present recommendations related to safety protocols.

Pre-packaged sack lunches will be available to all families eligible for free or reduced lunch at no charge and every family may pre-order the same lunch using an online form. Group Gold students will pick this lunch up from the designated location when departing for the day. Group Blue students may arrive early to pick this lunch up and eat it prior to their scheduled classes in the designated location. Group B students will eat at a designated seat that is 6 feet away from any other Group B students. Such seats will be clearly marked and adherence to this protocol will be mandatory.

6-12 Full In-Person Learning Food Service Plan

Pre-packaged sack lunches will be available to all families eligible for free or reduced lunch at no charge and every family may pre-order the same lunch or milk using an online form. The online form will accept orders one week at a time and the link will be published in all school newsletters. Families not electing to order a lunch from school should send a pre-packaged lunch from home which does not require any preparation. Water, napkins, utensils, condiments, and all other lunch elements should be packed with the lunch. Families are encouraged to practice the “pack it in, pack it out” philosophy and this practice will be taught and encouraged at school. School lunches will be delivered to students as close as practical to the lunch period as possible.

All students will eat lunch in their classroom, at their desks, under the supervision of their classroom teacher. The period allotted for eating will be 15 minutes and student masks will be removed only while students eat. All middle school students will eat during their 4th period and all high school students will eat during their 3rd period class. Teachers may eat during this period as well at their own discretion. Teachers may also read to students, show videos, and generally provide whatever instruction or interaction as determined feasible while students eat.

This lunch approach meets all requirements presently published by health authorities to the maximum extent feasible. As a result of the reduced time this plan requires, school dismissal will be earlier than normal at the following times:

- Middle school students will be dismissed at 2:17 p.m.
- High school students will be dismissed at 1:57 p.m.

Phase 6 Overview

Normal food service operations, including a daily hot lunch offering, will only occur after a sustained period of Phase 6 justifies the resumption of hot and cold lunch cafeteria based meal programming. When normal lunch resumes, K-8 students will eat in the cafeteria under the protocols utilized before the pandemic. High school students will resume open campus lunch during their assigned lunch period. Once a decision has been made to return to normal lunch operations, such plans and timelines will be communicated to students and families. Due to the complexities of resuming a full lunch program under Phase 6, it is anticipated the resumption of normal lunch programming will lag several weeks behind other Phase 6 changes due to practical challenges associated with this change.

Lunch Menu

Phases 1-5 will utilize a recurring menu with pre-packaged offerings that will be standardized by the day of the week. Thus families will be able to quickly understand the options for Mondays, Tuesdays, Wednesday, etc.

Short-term Closure Plans / E-Learning Days

Short-term closures and E-Learning days will be treated as Phase 1-3 for the purposes of lunch programming. Such temporary closures may require a modification of pick-up schedules. These schedules will be communicated if or when such closures occur.

Payment

The district will continue to utilize student lunch accounts and collect parent payments using the [MyPaymentsPlus](#) platform or through paper checks sent into school. When a parent completes an online request for a pre-packaged lunch, student accounts will be charged for all meals for the week at once. Every family who may qualify for free and reduced lunch should submit their application as part of the registration process. If a family thinks they may qualify for free or reduced lunch, yet still plans to send a lunch from home, it is still important to apply as many state and federal programs that impact overall district operations and resources are indexed to free and reduced lunch numbers. It is quick and easy to apply online here: [EGRPS Free and Reduced Lunch Application](#).

TRANSPORTATION

East Grand Rapids Public Schools resides within a walking community, and therefore does not provide general education transportation for K-12 students. Nonetheless, the district does transport students on a daily basis. Such examples include special education transportation for students as needed, before and after school care transportation between Woodcliff and each elementary school, field trip and athletic transportation, and for select educational programs operated by the Kent Intermediate School District (KISD). The district contracts with Dean Transportation for these transportation services. Special education transportation is also operated by Dean Transportation through a county-wide consortium overseen by the Kent ISD. This partnership is entering its sixth year, with district and Dean employees closely communicating and collaborating on a daily basis.

Dean Transportation and the district have worked to ensure transportation services comply with all aspects of Michigan's Return to School Roadmap. The complete plan spans over ten pages and the following highlights the key protocols of the plan which are important to parents/guardians:

- Hand sanitizer, meeting State of Michigan and Federal requirements, will be supplied and available on board each vehicle. The use of hand sanitizer by employees and passengers is required upon entering the vehicle.
- All passengers on board the vehicle, including any district staff and all students in grades preK-12, must wear facial coverings on the vehicle if medically feasible or as otherwise directed by district policy.
- All Dean employees, if medically feasible, must wear facial coverings while on the vehicle. In some instances, it is not safe for the driver to wear a facial covering while operating the vehicle.
- Daily Level One Cleaning and Disinfection Before and After Every Transit Route
 - Comprehensive cleaning of all frequently touched surfaces
- Weekly Level Two Cleaning and Disinfection
 - Inclusive of all Level One surfaces. Additionally includes all infrequently touched surfaces
- As Needed Level Three Cleaning and Disinfection Based on a Confirmed Case of COVID-19
 - Inclusive of Level One and Two surfaces and further extensive in nature. A 24 hour waiting period shall precede Level Three Cleaning and Disinfection. This deep cleaning will be performed by a specialized team.
- Anyone exhibiting symptoms of COVID-19 is not permitted on the school bus. Parents/guardians are required to monitor the health of their student(s) and take steps to ensure their student(s) and others are protected from COVID-19.
- Parents/guardians are encouraged to educate their children about physical distancing. Students should be taught how to distance themselves as much as possible at the bus stop and onboard the vehicle. Students are also encouraged to sit with siblings, relatives, or another student whom they interact with regularly in their classroom or cohort.

The full Dean Transportation plan can be reviewed here: [Dean Transportation MI Return to School: Transportation Operations Plan.](#)

OTHER CONSIDERATIONS

Athletics

Athletics and extracurricular activities support the goal of providing a well-rounded educational experience for students within the reopening process.

EGRPS will follow all executive orders and CDC and Kent County Health Department guidance for physical and social distancing, restricting the size of gatherings for indoor and outdoor spaces, cleaning and disinfecting equipment, and other health and safety precautions. Michigan High School Athletic Association (MHSAA) guidance will be applied. Middle school athletics are operated by the EGR Recreation Department and will be implemented per their process and procedures.

Clubs & Extra-Curricular Activities

Clubs and extra-curricular activities support the goal of providing a well-rounded educational experience for students. Clubs and extra-curricular may operate in compliance with the EGRPS Return to Learning Plan, executive orders, and the MI Safe Return to School Roadmap.

Band, Choir, and Physical Education

These courses present unique considerations given the nature of the activity and larger class sizes. The courses will meet outside with social distancing to the extent possible. When indoors students and staff are required to wear face coverings. Courses will be held in larger venues in order to support increased social distancing.

Gathering Size Limitations

While in Phase 4 of the MI Safe Start Plan, the Return to School Roadmap suspends large scale indoor gatherings and large scale outdoor gatherings to 100 people. Small scale indoor activities and all outdoor events require face coverings and social distancing for spectators.

Meetings, Events, & Gatherings at District Facilities

PTO, Booster, and other meetings and events typically hosted in our school building are suspended. We encourage those groups to meet virtually to the extent possible. Meetings related to special education and specific student/family needs may continue to meet in the school buildings.

Visitors to School Buildings

Visitors to the schools are restricted unless specific visitation is approved by building administration. After being visually identified, all visitors must answer COVID-19 screening questions and wear a protective face covering to be granted access.

Before and After School Childcare at Woodcliff Early Childhood Center

Before and after school care is provided as long as our K-5 students are attending school in person. Before and after school care will begin on Monday, August 31, 2020. Enrolled families are encouraged to plan for child care for the first week of school, August 24 - August 27, during which time K-5 students only attend school in the mornings and not at all on Friday, August 28.

