



Cub Scout Uniform Guide



The Lion uniform is made up of the following parts:

- **Shirt:** The official Lion T-shirt. Like the other parts of the Lion uniform (aside from the neckerchief and the slide), this item is solid blue.
- **Belt:** The official navy blue belt. The awards Cubs earn get put on these!
- **Cap:** The official blue Lion cap, complete with the Lion emblem.
- **Official uniform pants:** As with the socks, neckerchief, and slide, the den decides whether this item will be required. Just as it is for most of the other ranks, Lion rank pants are solid blue.
- **Neckerchief:** The yellow Lion neckerchief, marked with the Lion emblem.



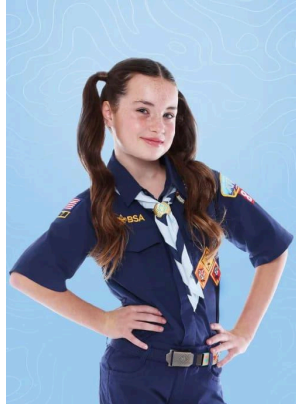
Here are the parts of the Tiger uniform:

- **Shirt:** The official blue uniform shirt. Like every Cub Scout uniform after Lion, this one is a button-up instead of a T-shirt. It can have long or short sleeves, depending on the Cub's preference.
- **Official uniform pants:** These solid-blue pants come in four varieties: shorts, skorts, long pants, and roll-up pants.
- **Belt:** The official navy blue belt.
- **Cap:** The official blue cap, complete with an orange front and the Tiger emblem.
- **Neckerchief:** The orange Tiger neckerchief with the Tiger emblem.



Here are the parts of the Wolf uniform:

- Shirt: The official blue button-up shirt. It can have long or short sleeves, depending on preference.
- Official uniform pants: These solid-blue pants come in four varieties: shorts, skorts, long pants, and roll-up pants.
- Belt: The official navy blue belt.
- Cap: The official blue cap, complete with a red front and the Wolf rank emblem.
- Neckerchief: The red Wolf rank neckerchief, complete with the Wolf emblem.



Here are the parts of the Bear uniform:

- Shirt: The official blue button-up shirt. It can also have long or short sleeves.
- Official uniform pants: These solid-blue pants come in four varieties: shorts, skorts, long pants, and roll-up pants.
- Belt: The official navy blue belt.
- Cap: The official blue cap, complete with a light blue front and the Bear emblem.
- Neckerchief: The light-blue Bear neckerchief, complete with the Bear emblem.



Here are the parts of the Webelos uniform:

- Shirt: The official blue button-up shirt. As with the other non-Lion uniforms, it can be purchased with either long or short sleeves.
- Official uniform pants: These solid-blue pants come in four varieties: shorts, skorts, long pants, and roll-up pants.
- Belt: The official navy blue belt.
- Cap: The official Webelos cap with plaid front and Webelos emblem.
- Neckerchief: The Webelos plaid neckerchief with the rank's signature emblem.
- Webelos Colors (optional): An accessory showing all the Webelos Adventure Pins that a Cub Scout has earned.



Here are the parts of the Arrow of Light uniform:

- Shirt: The official tan Scouts BSA button-up shirt with blue shoulder loops
- Official uniform pants: The official green Scouts BSA pants (available in shorts, long pants, roll-up pants, or skorts)
- Belt: The official green Scouts BSA belt
- Plain white neckerchief for den to design