

THE ART OF SHE

Opening Reception: Thursday, March 13th 2025 | 6pm-8pm

On View: Thursday, March 6th - Sunday, March 30th, 2025

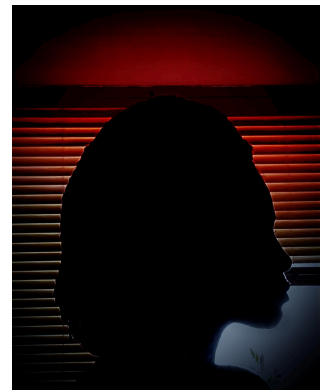
Gallery Hours: Tuesday – Saturday: 10am – 6pm & Sunday: 12-5pm

AHA Fine Art is pleased to present the group exhibition *The Art of She*, featuring recent works spanning paintings, collage, sculpture and mixed media by **Queen Andrea, Viktoriya Basina, Nancy Bruno, India Evans, Denae Howard, Christy Powers, Margaret Roleke, Nola Romano, Yolonda Ross, Arlene Rush, Lynn Stein and Margaret Withers**. The exhibition will be on view from Thursday, March 6th - Sunday, March 30th, 2025, with an opening reception on Thursday, March 6th 2025 | 6pm-8pm at AHA Underground (lower level at Jim Kempner Fine Art) located at 501 West 23rd Street in Manhattan, New York City at the Northeast corner of 23rd Street and Tenth Avenue.



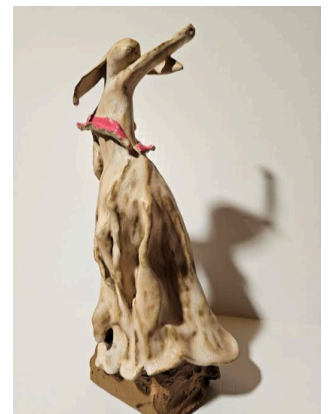
The Art of She is a dynamic group exhibition that honors the creativity and resilience of women through a diverse range of artistic expressions. This exhibition explores themes of empowerment, identity, and the unique experiences that shape the lives of women. Featuring paintings, sculptures, photography, and various other mediums, it expresses and harnesses the power of women's voices and perspectives. *The Art Of She* welcomes all forms of artistic expression, offering a platform for diverse interpretations and celebrating the strength, beauty, and individuality of women. A process-oriented artist, **India Evans**, clips, cuts, pastes, stitches and draws layer upon analog layer to exude a sensuality in composition building, as seen in 'Soul Revealing,' 2025 (left). Evans artwork embraces sexual empowerment and pleasure while incorporating solitude and the romanticisation of abandonment.

The Art of She is a meaningful and impactful theme for a group female art exhibition during Women's Month, as it celebrates the diverse and dynamic expressions of womanhood. **Yolonda Ross** describes her artwork by stating, "Above all else, I believe that women are the beginning of life and the keepers of life," a sentiment powerfully reflected in her piece *Cameo Shadow* (Right). Ross' work not only reflects her personal beliefs, but also serves as a platform to amplify women's voices, experiences, and contributions to society. By showcasing her art, particularly in the context of a month dedicated to celebrating women, we honor her role in advocating for social justice and recognizing the unique and vital presence of women in all spheres of life.



Margaret Roleke's, (left) *Candy (Women/War)*, invites the viewer to engage deeply with the pressing issues of our time. *Candy (Women/War)* is a wall relief that juxtaposes the playful, saccharine colors of sugar candy with unsettling imagery that is full of fragmented plastic dolls, ammunition, guns, and handcuffs. Shaped as a triangle, the piece evokes both stability and danger, symbolizing the complex and often brutal realities of women's experiences in society and war. Visually compelling and rich with meaning, her work serves as a catalyst for a larger conversation about healing, resistance, and the urgent need for

change, both in America and globally. By coating violent objects in a semi- punk, Pop Art aesthetic, *Candy Women (War)* seduces before it disturbs, forcing viewers to confront the mistreatment of women beneath its deceptively sweet surface.



The Art of She underscores the richness of women's experiences across different cultures, backgrounds, and identities, challenging traditional narratives and highlighting the multiplicity of female expression. **Nancy Bruno's**, *Leading Liberty* (right) draws "inspiration from the representation of women in art history and anthropomorphism through the traditional medium of clay. Throughout history, ceramics formed from the earth and baked in fire have been a tool for cultural art dating back to prehistoric art and have helped archaeologists fit together pieces of past civilizations. Today, I use clay again to reflect the culture of the ongoing struggles for women's rights in America while celebrating women's strengths." Women's healthcare choices have once again been placed in the political arena, clarifying the persistent inequalities that still stand in our society. The ongoing struggle for bodily autonomy highlights the imbalance of power and the need for collective action. Reflecting on art history, Eugène Delacroix's, *Liberty Leading the People* from (1830) serves as a powerful visual metaphor for the fight for freedom. The allegorical figure of Liberty, a woman fearlessly leading revolutionaries, symbolizes resilience and the pursuit of justice."- Nancy Bruno



In **Viktoriya Basina's** *Chicken (The Chick)*, she includes female doll figures and domestic animal figures that question the sanctity, violence, and destruction that affect our contemporary condition. The women in her Folk Toys series are presented as reinvented religious iconography "to trouble what are traditionally considered sacred poses and gestures," states Basina. The animal, *Chick*, and other animals referenced in Basina's work, are often used as degrading language against women (in English and Russian), and are common sacrificial animals. While at first seemingly whimsical and attractive, the figures allude to warfare, militarism, consumption, and misogyny. What is currently idolized and glorified actually leads to incessant violence and intolerance. People and culture are obsessed with symbols of wealth, weapons, and entrenched gender roles. Basina continues, "This mixed-media work is created with oil painting, inlaid mosaics, fused glass, vitreous enamel, and gold leaf on wood. This combination is indicative of how we invent strategies to cope with ongoing fragmentation and divisiveness."

Works on view serve not only as a celebration of creativity, but also as a call to action for greater gender equity in a wider lens, promoting visibility and encouraging future generations of women to pursue their artistic passions. In honoring the strength, resilience, and creativity of women, *The Art of She* contributes to the ongoing conversation about the importance of equal representation and recognition in all creative fields and across the world.

For more information and visuals, please contact Francesca Arcilesi and Norma Homberg at info@ahafineart.com.