

Title Page

. Title :

I. First Author:

1. Name :
2. Affiliation :
3. E-mail :
4. Handphone/Whatsapp Number :
5. Orcid /SINTA ID :

II. Second Author:

1. Name :
2. Affiliation :
3. E-mail :
4. Handphone/Whatsapp Number :
5. Orcid /SINTA ID :

III. Third Author:

1. Name :
2. Affiliation :
3. E-mail :
4. Handphone/Whatsapp Number :
5. Orcid /SINTA ID :

IV. Fourth Author:

1. Name :
2. Affiliation :
3. E-mail :
4. Handphone/Whatsapp Number :
5. Orcid /SINTA ID :

The author name can be continued to the fifth author and so on until all author names are written. Make sure the author's name is correct before submitting. **Changes (additions and subtractions) to the author's name are not allowed after PUBLISH.**

Write the full name and not abbreviated (e.g. *Maharani Juang*, not *M. Juang* or *Maharani J.*). Put an asterisk (*) at the end of the name of the author who serves as the author for correspondence (e.g. *Maharani Juang**). The author for correspondence is the person responsible for the process of article submission, revision to publication and post-publication.

(The title page ends here. Continue manuscript writing on a new page)

TITLE OF THE PAPER, TIMES NEW ROMAN, 14 FONT SIZE, CENTER, BOLD, LENGTH BETWEEN 50 TO 100 CHARACTERS

*Author Name¹, Author Name² and Author Name³ (All Authors' full name here, the abbreviation is not allowed)

¹Faculty, University, Country; ^{2,3} Company, Country (address is not allowed)

*Corresponding Author, Received: 00 Oct. 2018, Revised: 00 Nov. 2018, Accepted: 00 Dec. 2018

ABSTRACT: Please read all this information given in this template carefully before start typing. Please use Times New Roman 10 Font size. The paper title must be between 50 to 100 characters length. The abstract must contain "Problem statement, Approach, Results and Conclusions". Length of the abstract must be between 150 ~ 250 words. Please use this document as a template. The page limit is 8 pages for ordinary paper and 10 pages for keynote paper (even number of pages is preferable). If the paper length exceeds the maximum limit or if the final paper is NOT according to this Template – it may NOT be published in the printed journal and online. Author must pay the publication charges with the Final Submission. Attach both DOC and PDF format during the final submission. Please double check that 10 font size throughout the paper except for the title which is 14 font sizes only. Do not write the author's email, position and department in the author's section above. Visit the website for an update and follow the style given above.

Keywords: Four or five keywords (First characters of each key are in capital/uppercase letters), Italic

1. INTRODUCTION

Paper size 210mm× 297mm of A4 paper. Please save to MS Word templates directory. Use 10 point Times New Roman font throughout the paper including text inside figures and tables. Single line spacing is mandatory. Try to avoid Underline or Bold within texts.

The top and left margin is 30mm while right and bottom margins are 25 mm. Headings should be all left justified and numbered. Leave one line space between headings and the first paragraph and no space before succeeding paragraphs. Indent the first line of the paragraph by 5mm. All text should be left and right justified. Footnotes and underlines are not allowed.

2. HEADINGS

Use at most three levels of headings that correspond to chapters, sections and subsections. The first level headings for chapter titles should be in 10pt, bold, justified, and upper case font. Leave one blank line before and after the first level headings, respectively.

2.1 The Second Level Headings

The second level headings should be in 10pt, bold, justified, and First Characters of Each Word are in Capital font. Leave one blank line both before and after the heading, respectively.

2.1.1 The third level headings

These headings should be in 10 pt, italics, and sentence case. Insert one blank line before and after the headings. The further lower level headings should be avoided.

3. TABLES, FIGURES AND EQUATIONS

Figures or Tables should be sized the whole width of a column, as shown in Table 1 or Fig.1 in the present example, or the whole width over two columns. Do not place any text beside the figures or tables nor place them all together at the end of the manuscript.

3.1 Tables

Table numbers and labels should be placed on top of the table, hanging by 12.5 mm, and left- and right-justified. Number the tables consecutively and locate them after and close to where they are first referenced. Leave at least one line space between the table, label and the text. Tables should be auto-fit to a single column or the whole width over two columns and no vertical lines or borders are needed.

Table 1 This is an example of table formatting

Items	x	y	z
a	5	2	5
b	6	1	6
c	8	3	9

Note: should be placed under the table leaving no

space in-between; 10-pt font; and left- and right-justified.

3.2 Figures

Figure numbers and labels should be placed one line under the figure, hanging by 12.5 mm, and left- and right-justified. Number figures consecutively in the order in which reference is first made to them in the text. Locate them after and close to where they are first referenced. Please do not compress the figure (images of 600 dpi resolution or more are preferable). Draw figures clearly and embed text in the image properly. Do not cut and paste from another text and ensure that after printing, the images look good and readable. Do not use outer boundary. Figures should be auto-fit to a single column or the whole width over two columns.

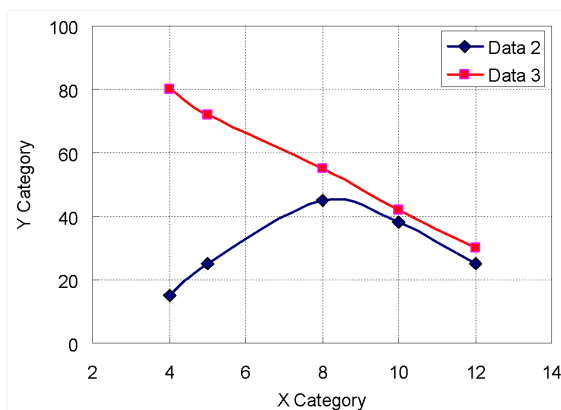


Fig.1 This is the example for figure formatting

3.3 Copyright Form

Copyright form signed by all authors is necessary for Composite Journal. It should be submitted along with the paper submission. Copyright form can be downloaded from our web site.

3.4 Equations

Equations and symbols should be typed in the equation editor. Number equations consecutively with equation numbers in parentheses, as in

$$\sigma_{cr} = \sigma_{mu} + \sigma'_R (V_r)^{1.1} \quad (1)$$

Refer to “Eq. (1)” not “equation (1),” except at the beginning of a sentence: like “Equation (1) is ...”

The equation number, enclosed in parentheses, is placed right justified. Symbols and notation should be defined when they first appear. Use one blank line before and after the equation. Equations should be auto-fit to a single column or the whole width over two columns.

3.4.1 Proofread

If your native language is not English and if you feel that you need to go-through, please get a native English-speaking colleague to proofread your paper.

3.4.2 Color figures and drawings

You may use color figures and photographs in your paper. These will appear in color on the online version of the journal. However, please check that your color figures are legible when printed in monochrome (black and white), as this is the way they will be reproduced in the hardcopy version of the journal.

4. CITATION AND REFERENCE LIST

Number citations consecutively in square brackets [1]. The sentence punctuation follows the brackets [2]. Multiple references [2,3] are each numbered within one bracket [1-3]. When citing a section in a book, please give the relevant page numbers. In sentences, refer simply to the reference number, as in [3]. Do not use “Ref. [3]” or “reference [3]” except at the beginning of a sentence: “Hossain [3] shows ...”

Try to avoid footnotes. Give all authors’ names; do not use “et al.” Use a space after authors’ initials. Papers have been submitted for publication or that have not been accepted or published should not be cited. Papers that have been accepted for publication, but not yet specified for an issue should be cited as “In press” [5]. The references are 5mm hanging indentation.

5. CONCLUSION

The full paper must follow this pattern. This is important! Please encourage others to publish their works with Composite Journal.

6. ACKNOWLEDGMENTS

Please note that this will be double-blind submission. The author’s identities will be removed before sending to reviewers. The authors will not know who the reviewers are. Try to follow the reference style below. Some references from Composite Journal would be appreciated. The

benefit will be returned to all authors by increasing the impact factor of the journal.

7. REFERENCES

- [1] Moghal A. A. B., Dafalla M. A., Elkady T. Y., and Al-Shamrani M.A., Lime Leachability Studies on Stabilized Expansive Semi-Arid Soil. International Journal of GEOMATE, Vol. 9, Issue 18, 2015, pp.1467-1471.
- [2] Awal A.S.M.A, Hosseini H. and Hossain M.Z., Strength, Modulus of Elasticity and Shrinkage Behaviour of Concrete Containing Waste Carpet Fiber, International Journal of GEOMATE, Vol. 9, Issue 17, 2015, pp. 1441-1446.
- [3] Hossain M.Z., For Chapter in a Book, Soil Mechanics, 4th ed. Vol. 2, Sakai, Ed. Sankeisha Publisher's Name, Year, pp. 11–60.
- [4] Author H., A Book New York Publisher, Year, pp.1-200.
- [5] Annnn B., Unpublished Work but Accepted, Vol., Issue, Year.
- [6] Kimura S., Journal Paper Title, J. of Computer Science, Vol. 1, Issue 2, 1987, pp. 23-49.
- [7] Islam M.R., Conference proceedings, in Proc. 2nd Int. Conf. on GEOMATE, 2011, pp. 8-13.
- [8] Hossain M.Z. and Awal A.S.M.A., Experimental Validation of a Theoretical Model for Flexural Modulus of Elasticity of Thin Cement Composite, Const. Build. Mat., Vol.25, No.3, 2011, pp.1460-1465.

Last page, both columns must be same height from top or bottom. Please do not change journal and authors information.

Please do not change format of this template

Copyright (c)
including the
obtained from