

Type the Title of Your Manuscript Here

First Author^{1,*}, Second Author^{1,2}, Third Author²

¹First affiliation institution, City, Country

²Second affiliation institution, City, Country

*Corresponding Author. Email: typeyouremail@here.com

Telp: +62-12345678

Abstract

Background: Provide an abstract of no more than 250 words.

Materials and Methods: Structured-abstract should be followed in writing any type of articles.

Results: Type your abstract here.

Conclusion: Type your abstract here.

Keywords: Keywords contain three to eight words/phrases separated with coma.

Introduction

This guideline is a template for original article submission for Indonesian Journal of Basic and Clinical Studies (IJBCS) that includes research article or in silico analysis. Authors are allowed to modify this template for submission purpose. All submitted manuscripts must not previously published and not under consideration for publication elsewhere. Manuscripts may come from any country but must be written in English. There are no submission and processing charges for this journal.

In the Introduction, you need to state the objective of the study and provide enough background. You can also mention the aims of your study here. Use present tense to write any facts or common ideas as the background of the study.

Materials and Methods

When writing a research article, make sure that the total of works (not including abstract and references) in the manuscript is less than 3,500 words. The submission file is in Microsoft Word file (.doc/.docx) formatted as standard A4 page setup with double-space and 1-inch margin on the left and right sides. Use 12-point Times New Roman font.

In Materials and Methods section, you must describe what you did in the study: what and how experiments were run, what, how much, where, when, and why equipment and materials were used; also describe statistical test and the statistic tool that was used. Use the past tense and the third person to describe what you did. You also need to mention the approval for the study by the relevant ethics committee and the informed consent of the subjects, if required.

Express all measurements in Conventional or International System (SI) units. Drug names must use generic names. When proprietary brands are used in research, include the

brand name, the name and location (city & country) of the manufacturer in parentheses after the first mention of the generic name.

Results

Results should be clear and concise. Avoid extensive citations and discussion of published articles, discuss only data from current study. Decimal fraction is written in English version (for thousand use point (,) and decimal use comma (.)). To support your data, you can include 8 figures and/or tables in total. Use the past tense to present the result data.

Discussion

The purpose of the Discussion is to state your interpretations and opinions, explain the implications of your findings, and make suggestions for future research. Discussion should explore the significance of the results of the work, not repeating them.

You have to be able to support the result, explain how your results relate to expectations and to the literature, clearly stating why they are acceptable and how they are consistent or fit in with previously published knowledge on the topic.

Conclusion

You may state the main conclusion of your study in the Conclusion section. It has to lead the reader to the most important information from the manuscript. If possible, provide recommendations or suggestion for further research.

Acknowledgment

The acknowledgment should be filled with other contributors those are not qualified in the author's list. Research grant that supported the study should be listed in this section as well.

Authors' Contributions

In order to qualify for authorship of the submitted manuscript, every of the listed authors should have made substantial intellectual contributions both to the research and to its preparation.

AB and CD were involved in concepting and planning the research, EF and GH performed the data acquisition/collection, EF and IJ calculated the experimental data and performed the analysis, AB drafted the manuscript and designed the figures, CD aided in interpreting the results. All authors took parts in giving critical revision of the manuscript.

References

1. Sandra F, Esposti MD, Ndebele K, Gona P, Knight D, Rosenquist M, *et al.* Tumor Necrosis Factor-Related Apoptosis-Inducing Ligand Alters Mitochondrial Membrane Lipids. *Cancer Res.* 2005; 65 (3): 8286-97.
2. Murray PR, Rosenthal KS, Kobayashi GS, Pfaller MA. *Medical microbiology*. 4th ed. St. Louis: Mosby; 2002.
3. Rosenberg GA. Matrix metalloproteinase and proteolytic opening of the blood brain-barrier in neuroinflammation. In: deVries E, Prat A, editors. *The Blood-brain Barrier and Its Microenvironment Basic Physiology to Neurological Disease*. New York: Taylor and Francis Group; 2005. p.335-58.
4. Arlauckas SP. Near infrared fluorescent choline kinase alpha inhibitors for cancer imaging and therapy [Dissertation]. Philadelphia: University of Pennsylvania; 2015.
5. Medline Plus [Internet]. Bethesda: US National Library of Medicine; ©2009. Diabetic Kidney Problems [update 2015 Nov 2; cited 2015 Nov 16]. Available from: <https://www.nlm.nih.gov/medlineplus/diabetickidneyproblems.html/>.
6. Fledelius HS. Myopia and significant visual impairment: global aspects. In: Lin LLK, Shin YF, Hung PT, editors. *Myopia Updates II: Proceedings of the 7th International Conference on Myopia 1998 Nov 17-20, Taipei*. Tokyo: Springer; 2000. p.3-17.

Notes:

References and citation must be according to the Vancouver Systems. Where available, URLs for the references have been provided. For research article, 40 or less references are allowed.

Figures/Tables

Table 1. Type your table caption with 10-point Times New Roman font. Number tables consecutively in accordance with their appearance in the text. Present the table with no vertical lines.

Parameter	Value
Parameter a (unit)	Mean±SD
Parameter b (unit)	Mean±SD
Parameter c (unit)	Mean±SD

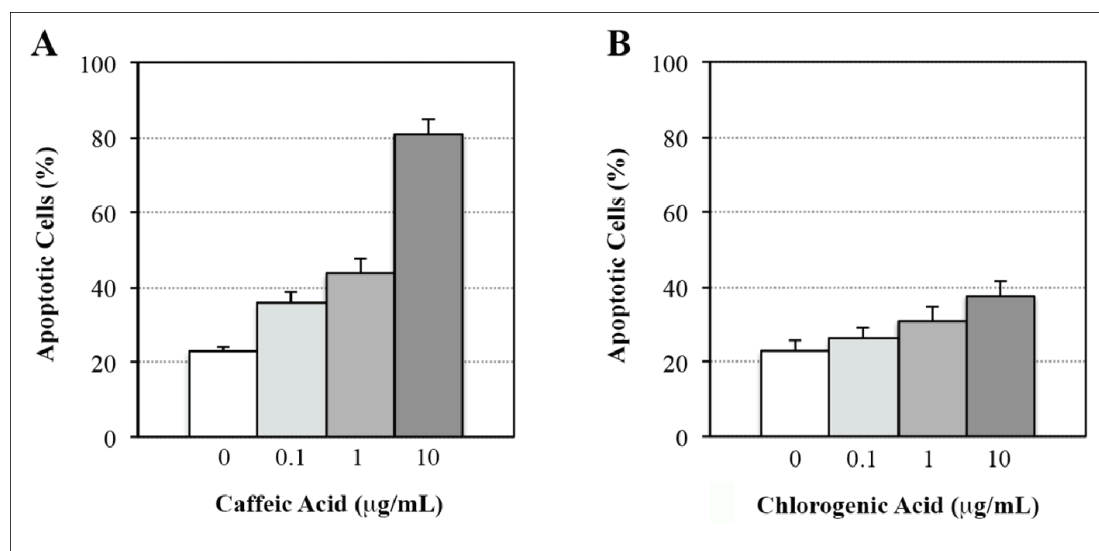


Figure 1. Type your figure caption with 10-point Times New Roman font. Provide the respective high resolution figure. Number figures consecutively in accordance with their appearance in the text. Please provide proof of permission that has been obtained to reproduce illustrations from other publication (Adapted with permission from Cell and Biopharmaceutical Institute).

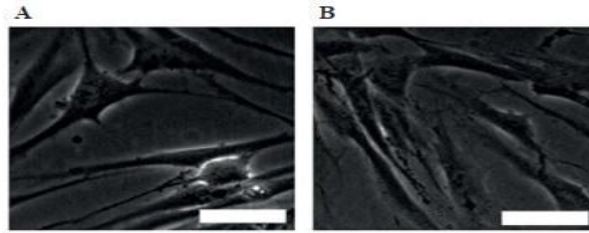


Figure 1. Morphology of cells derived from dental pulps and periodontal membranes. Isolated cells derived from dental pulps (A) and periodontal membranes (B) were cultured according to Materials and Methods. Cells in passage 5 were documented under an inverted light microscope. White bar: 10 µm.

Figure 2. Type your figure caption with 10-point Times New Roman font. Provide the respective high resolution figure. Number figures consecutively in accordance with their appearance in the text. If there's two parts of the figure, make sure you explain what (A) and (B) are. A size bar should be provided for any morphology, histology, or histopathology pictures. For example: white bar = 100 µm.