

“The cells were imaged with a fluorescent microscope (Echo Revolve, USA)”

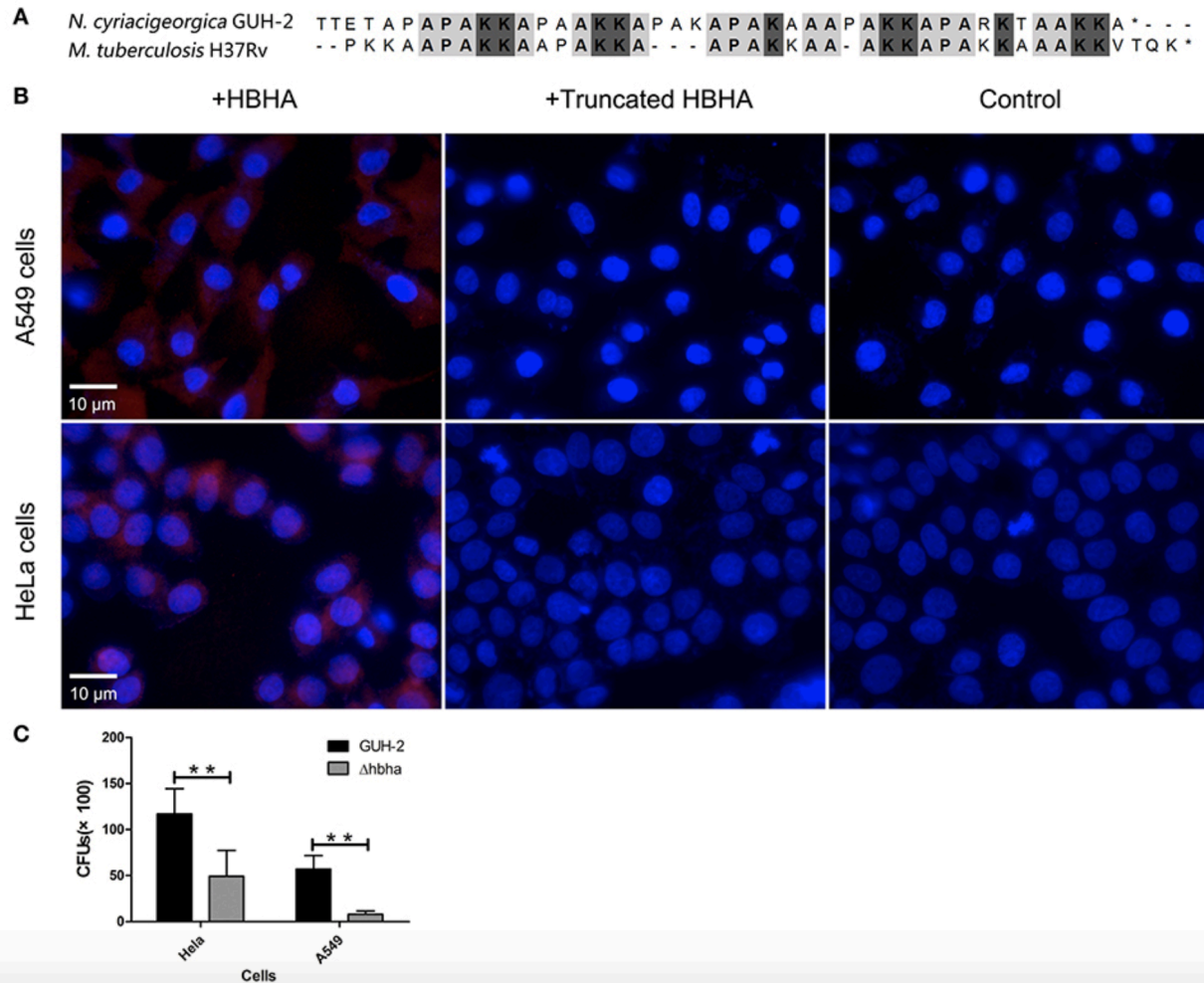


Figure 3. *N. cyriacigeorgica* HBHA adheres to A549 cells and HeLa cells. **(A)** Amino acid sequence alignment between *N. cyriacigeorgica* HBHA and *Mycobacterium tuberculosis* HBHA.

(B) Immunofluorescent assays demonstrate the adhesion of *N. cyriacigeorgica* HBHA to A549 cells and HeLa cells. HBHA protein or the HBHA protein lacking C-terminal domain (10 μ g) was added to A549 cells or HeLa cells separately for 1 h, and the protein adhesion onto the cells was detected with fluorescent microscopy. Data are representative of at least three independent experiments. **(C)** HeLa or A549 cells were infected with wild-type or $\Delta hbha$ strains for 1 h, and the bacteria adherence to cells was then determined. The assays were performed in triplicate, and the results are expressed as the means \pm SD. ****** $P < 0.01$.