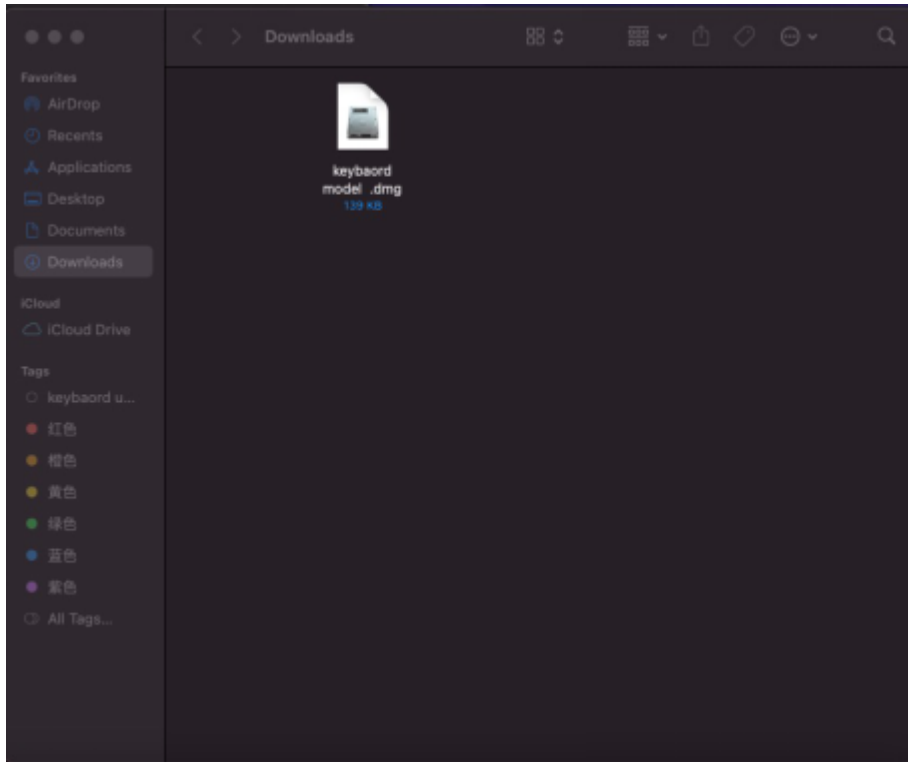
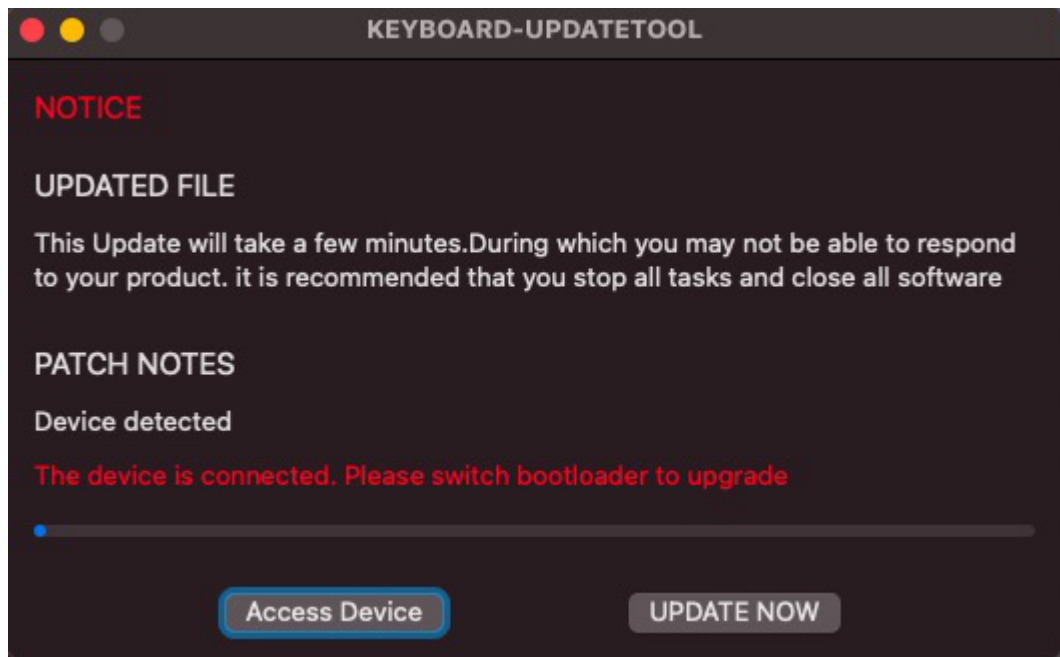


Operating Instructions for Updating the MAC Computer System Program

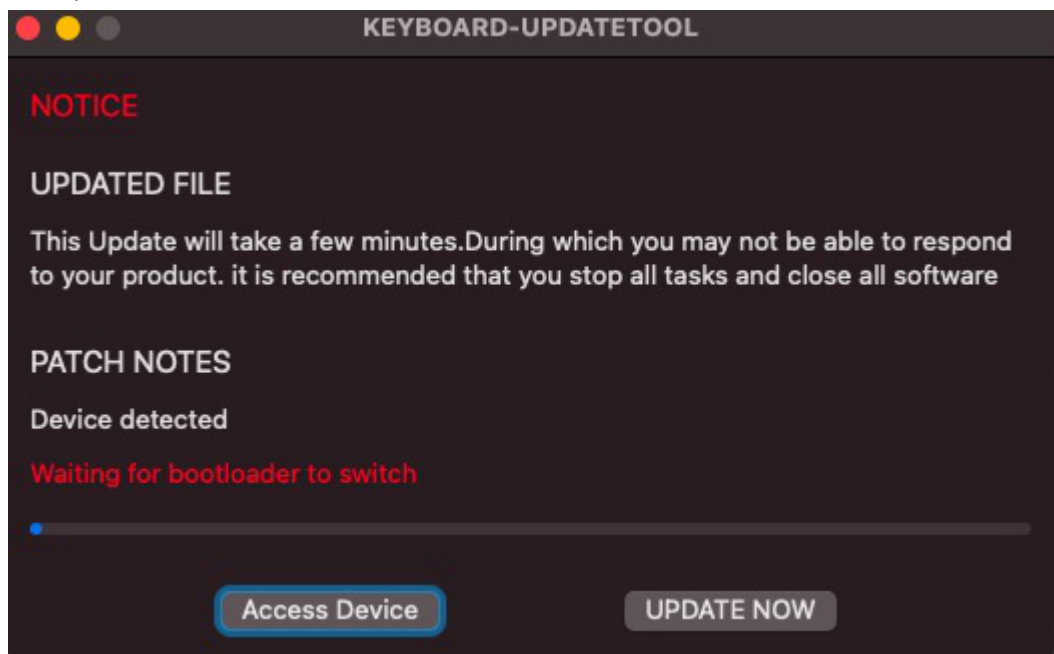
1. Open the corresponding FW upgrade software that needs to be upgraded, and click to open the keyboard-mode APP:



2. Plug in the keyboard USB, the upgrade program will display "The device is connected. Please switch bootloader to upgrade", click the button "Access Device":



3. When the prompt box displays "Bootloader device inserted detected, please upgrade", click the button on the right "UPDATE NOW" (note: only need to click once):



4. After clicking UPDATE NOW, the upgrade progress bar will be displayed in the middle of the upgrade program. After the upgrade is 100%, the upgrade is complete. Do not touch the keyboard during the test. The interface will display "The device has been removed", the keyboard will automatically reset, and the keyboard upgrade will be successful:

