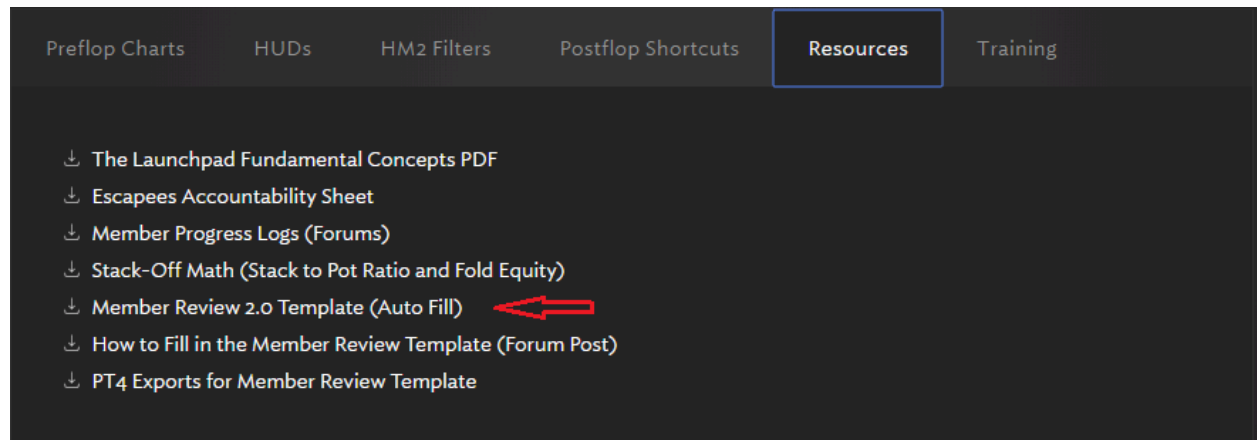


## Member review 2.0

### How to use the auto fill member review sheet

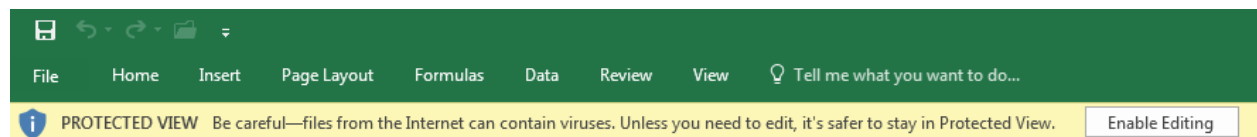
This update enables you to automatically fill in the member review without having to do it yourself. To make this work you need to have Microsoft excel and holdem manager both working on your computer.

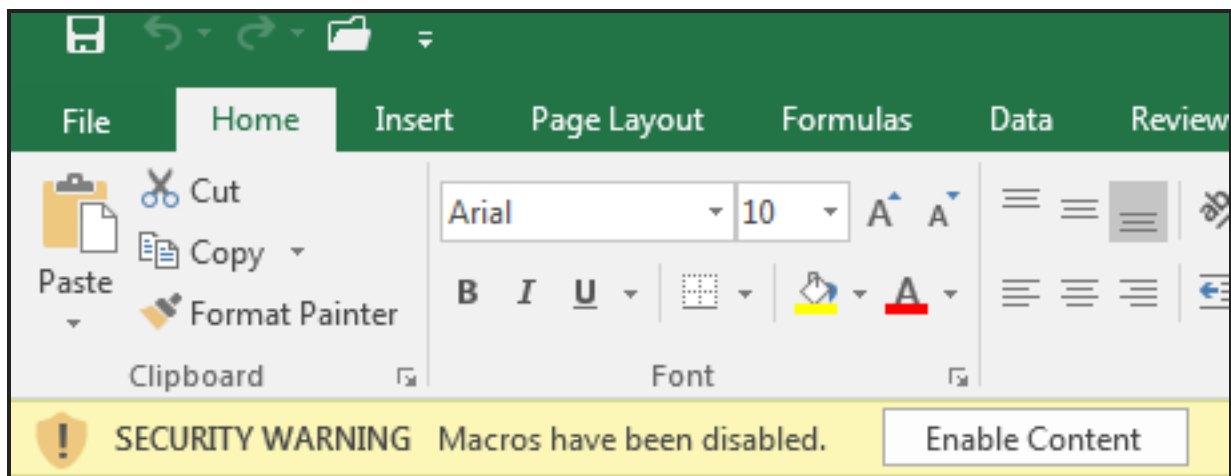
Go to the download section on <https://jnandezpoker.com/downloads><sup>1</sup> and go the resources tab and look for the Member review 2.0 Template (Auto fill). Download this file.



Make sure to have Holdem manager open while working within this excel file to make sure everything works smooth.

The first thing you need to do is enable all the warnings in excel so the file will work properly. These are warnings like this.

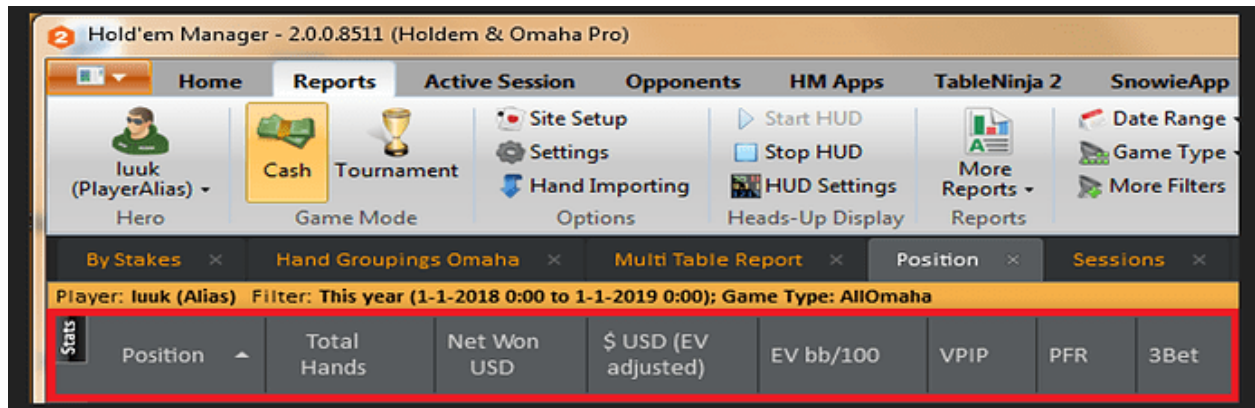




Next up is filling in the sheet. You will see two big buttons in your file. Fill Data and Clear Data. To fill the sheet click on Fill data and your member review sheet will be filled in with all your statistics taken from your holdem manager database. Click on clear data to remove all the stats.

5-1-2019 --> Additional information on setting up your HM2 **without the autofill file**. This post was created in the beginning of the mastermind.

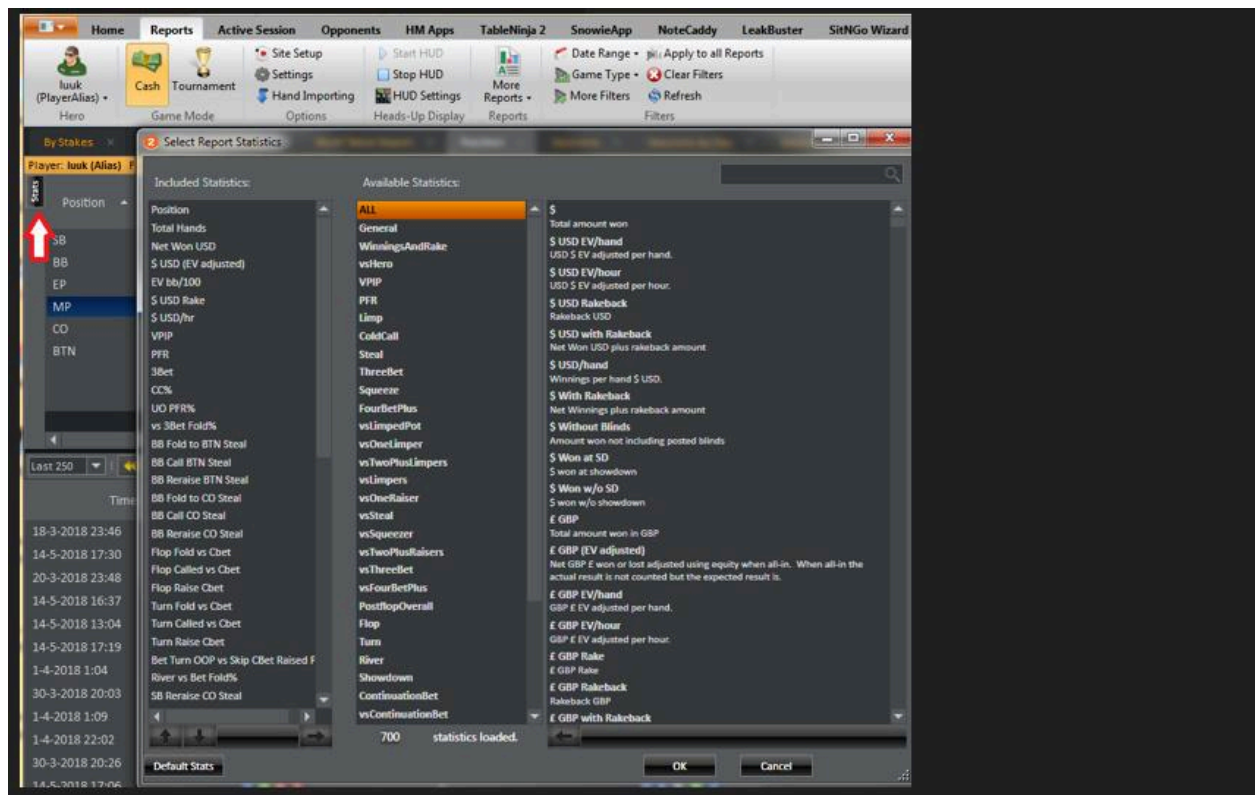
I am getting many messages on how to get all the correct stats for the excel file. The filters we have provided are one part of the solution. On top of that, you have to add the right stats under your report section. This eventually shows the specific frequencies you are looking for. I will guide you through it in this post. What I mean by that is all the stats in the RED bar below. Once you have filled in all the right stats you are looking for in there, you can very efficiently find all the numbers you are looking for.



I work mainly from the position tab. The following stats below are in there as a general overview.

|  |                      |                    |             |                      |                 |                 |     |      |     |         |               |
|--|----------------------|--------------------|-------------|----------------------|-----------------|-----------------|-----|------|-----|---------|---------------|
| By Stakes  | Hand Groupings Omaha | Multi Table Report | Position    | Sessions             | Sessions by Day | Sessions by Tab |     |      |     |         |               |
| Player: luuk (Alias) Filter: This year (1-1-2018 0:00 to 1-1-2019 0:00); Game Type: AllOmaha |                      |                    |             |                      |                 |                 |     |      |     |         |               |
| Stats  | Position             | Total Hands        | Net Won USD | \$ USD (EV adjusted) | EV bb/100       | VPIP            | PFR | 3Bet | CC% | UO PFR% | vs 3Bet Fold% |

Once you click on Stats, you see the following window. In this window, you can add/remove all the specific frequencies you are looking and need for this file.



What you have to do is insert all the frequencies in one long row next to each other. This makes it easiest for you to fill in the excel file. This will also enable you to repeat this in the future very easily to see how your game has changed. I will show each of the eight segments below that we use in the excel file. Once you have done this, you can apply the filters we have uploaded on the website and you are ready to fill in the frequencies.

### Big blind defense

| By Stakes   | Hand Groupings Omaha   | Multit Table Report     | Position               | Sessions               | Sessions by Day        | Sessions by Table               |
|---|------------------------|-------------------------|------------------------|------------------------|------------------------|---------------------------------|
| Player: look (Alias) Filter: This year (1-1-2018 0:00 to 1-1-2019 0:00); Game Type: All Omaha |                        |                         |                        |                        |                        |                                 |
| BB Fold to<br>BTN Steal   | BB Call<br>BTN Steal   | BB Reraise<br>BTN Steal | BB Fold to<br>CO Steal | BB Call CO<br>Steal    | BB Reraise<br>CO Steal | BB Fold vs<br>Cbet              |
| Flop Fold<br>vs Cbet  | Flop Called vs<br>Cbet | Flop Raise<br>Cbet      | Turn Fold<br>vs Cbet   | Turn Called vs<br>Cbet | Turn Raise<br>Cbet     | Bet Turn<br>OOP vs<br>Skip Cbet |
| River vs<br>Bet Fold%   |                        |                         |                        |                        |                        |                                 |

### Restealing

|                           |                            |                |                                |                               |                                 |                |                                |                                     |                                 |
|---------------------------|----------------------------|----------------|--------------------------------|-------------------------------|---------------------------------|----------------|--------------------------------|-------------------------------------|---------------------------------|
| SB<br>Reraise<br>CO Steal | SB<br>Reraise<br>BTN Steal | Flop CBet<br>% | Check<br>Fold Flop<br>% As PFR | Check Call<br>Flop% As<br>PFR | Check<br>Raise Flop<br>% As PFR | Turn CBet<br>% | Check<br>Fold Turn<br>OOP Skip | Check Call<br>Turn OOP<br>Skip Cbet | Check<br>Raise Turn<br>OOP Skip |
|---------------------------|----------------------------|----------------|--------------------------------|-------------------------------|---------------------------------|----------------|--------------------------------|-------------------------------------|---------------------------------|

- 3-bet BB vs CO and 3-bet BB vs BTN can be found under big blind defense3

### Single raise pots IP

| Sessions by Day           | Sessions by Table            |
|---------------------------|------------------------------|
| Flop CBet<br>IP%          | Flop vs<br>Raise Fold<br>%   |
| Turn CBet<br>IP%          | Fold Turn<br>IP Skip<br>CBet |
| Delayed<br>Turn CBet<br>% | River<br>CBet IP%            |

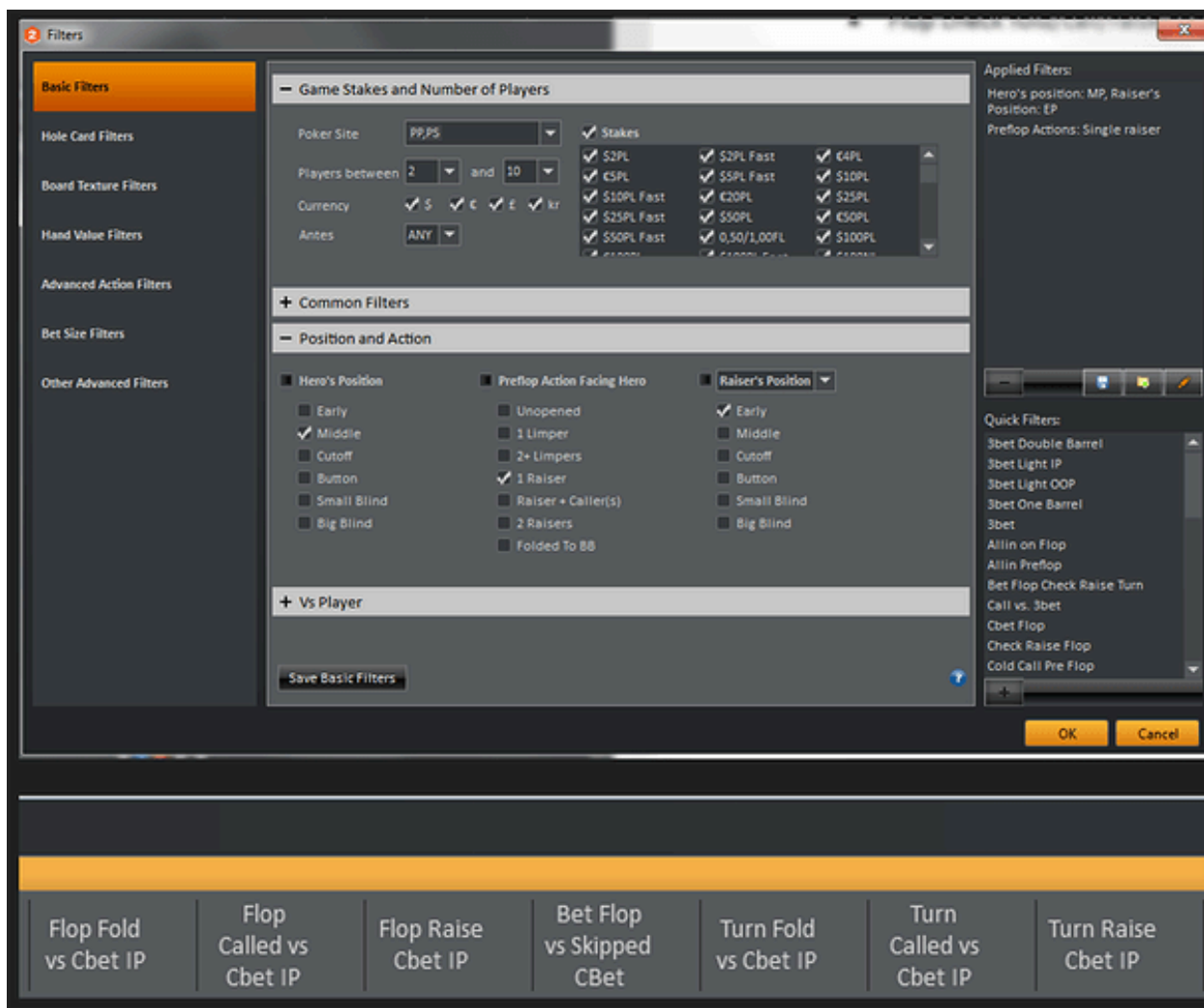
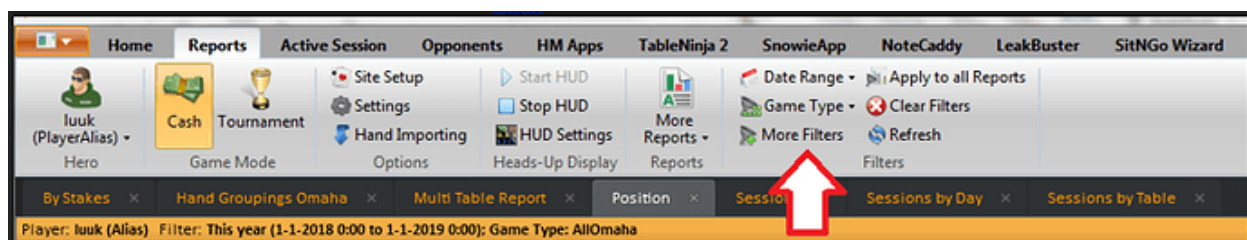
### Single raised pots OOP

|                   |                   |                        |
|-------------------|-------------------|------------------------|
| Flop CBet<br>OOP% | Turn CBet<br>OOP% | River<br>CBet OOP<br>% |
|-------------------|-------------------|------------------------|

- Flop c-bet-fold can be found under single raised pot IP: Flop vs Raise fold %
- Flop check fold/call/raise can be found under restealing

### Coldcalling IP

The four preflop frequencies have to be created by going to “More Filters” – Basic Filters – Position and Action. Give your position, MP for the first one, filter for preflop action facing Hero is 1 raiser, Raiser’s position EP. You can then see your CC%. Do the same for the other preflop situations.

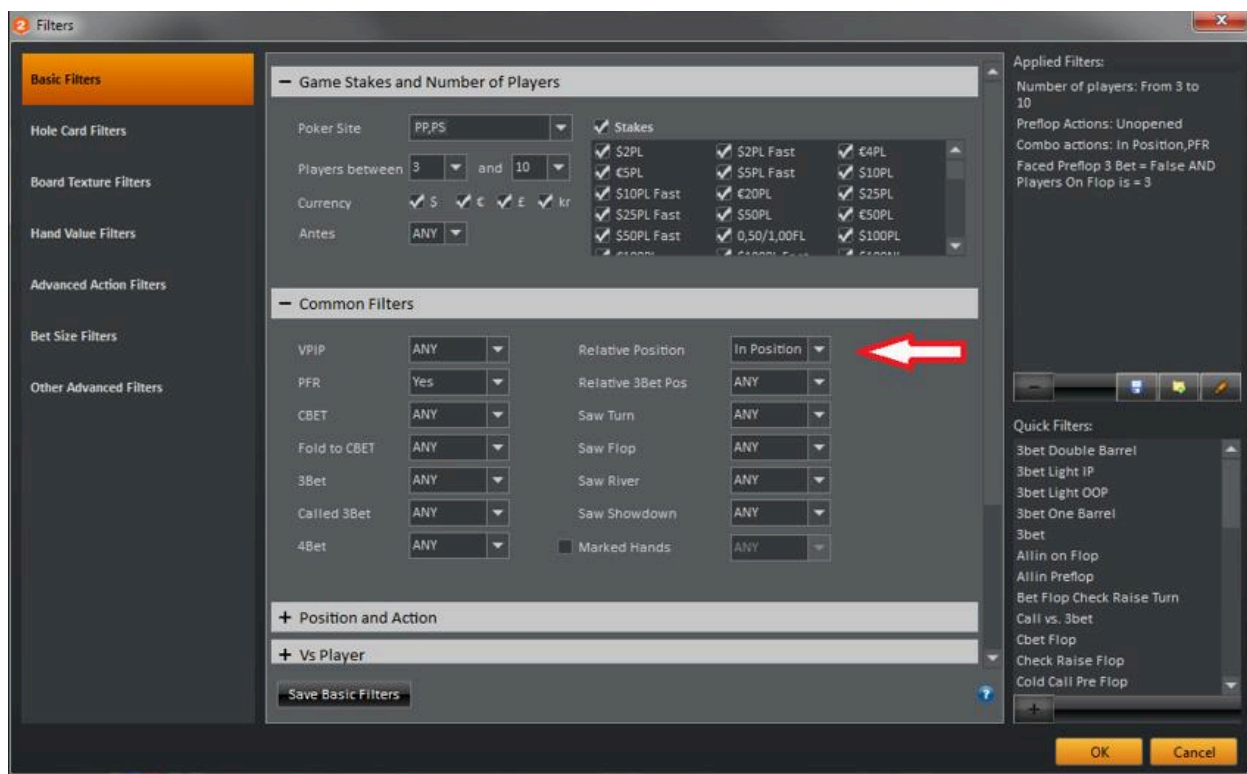


### 3-Betting IP

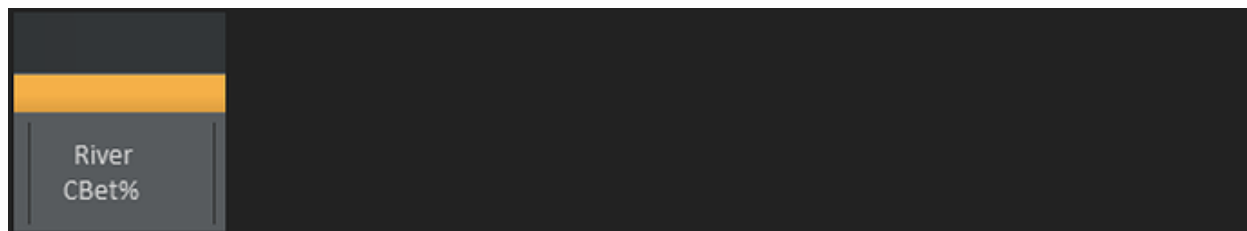
- For the preflop frequencies, do the same as with cold calling IP. There you can view the 3bet as well.
- The postflop frequencies can be found under single raised pots IP.

### 3-way pots

Apply the filter and set it to "in position" under More filters:



- Do the same for out of position
- Frequencies can be found between the STATS you have at this point.
- Add river c-bet at the end of all your STATS.



### Short stacking

All frequencies can be found under the standard preflop frequencies.

|   |            |             |             |                      |           |      |     |      |     |         |               |
|---|------------|-------------|-------------|----------------------|-----------|------|-----|------|-----|---------|---------------|
| By Stakes × Hand Groupings Omaha × Multi Table Report × Position × Sessions × Sessions by Day × Sessions by Table × |            |             |             |                      |           |      |     |      |     |         |               |
| Player: luuk (Alias) Filter: This year (1-1-2018 0:00 to 1-1-2019 0:00); Game Type: AllOmaha                        |            |             |             |                      |           |      |     |      |     |         |               |
| Stats   | Position ▾ | Total Hands | Net Won USD | \$ USD (EV adjusted) | EV bb/100 | VPIP | PFR | 3Bet | CC% | UO PFR% | vs 3Bet Fold% |

In case it doesn't work out or you need more help, feel free to send Luuk a PM or respond in the comments below, and he will make sure to set you up correctly.

**One final side note in terms of analyzing your game with the file:**

Sample size is important for reviewing and analyzing your game. The bigger the sample, the more accurate your results are. Preflop and flop frequencies are the most accurate of course. Even on a 20k-50k sample size this is helpful.

However, when it comes to turn and river frequencies you need a bigger sample to be able to draw solid conclusions because these situations occur way less often. Always use results in combination with going through your database more in depth and see what is actually happening.

DO NOT CHANGE YOUR GAME DRASTICALLY WITHOUT A BIG ENOUGH SAMPLE OR GOOD ENOUGH REASONS