

Instructions for Connecting to Metaverse Made by Snow Yunxue Fu

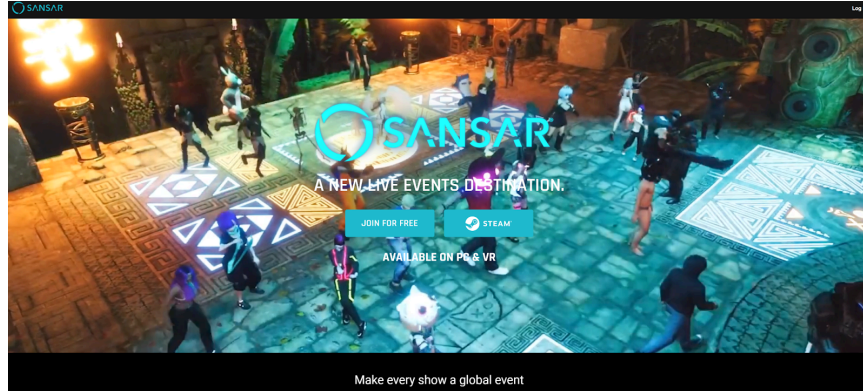
- Social VR Platform Sansar Download and Access Instructions

→ The Brief Instructions:

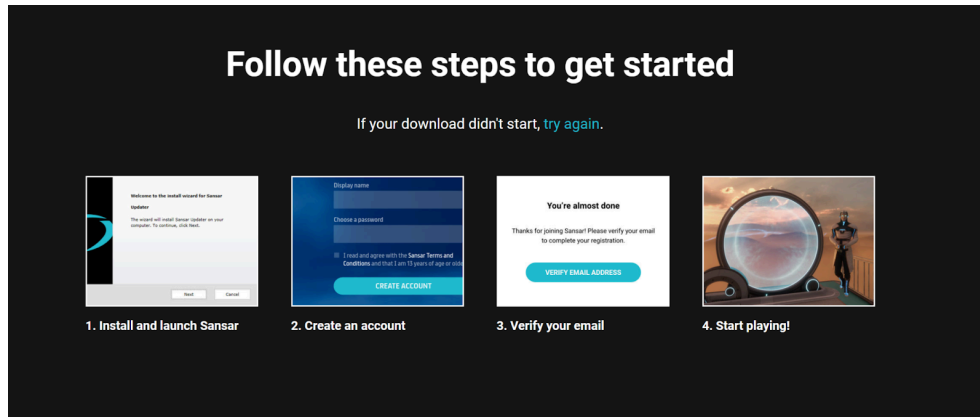
1. Use this link to download Sansar: <https://www.sansar.com/download>
2. Follow the instructions on the installer.
3. Sign up for a Sansar account using email and choose an avatar.
4. Click the following links in your web browser for accessing all Metaverse artwork/space/experiences made by New Media Artist [Snow Yunxue Fu](#):
 - [*VRWSPark Exhibition 1*](#)
 - [*VRWSPark Exhibition 2*](#)
 - [*Sheng*](#)
 - [*Daughter ICE Metaverse Home*](#)
 - [*Veraverses*](#)
5. Choose to “Visit” the exhibition and accept the pop up on the screen. This will automatically load into the exhibition.
6. Once in Sansar, use the arrow keys or W/A/S/D keys on your keyboard to move around. Hold right click your mouse and drag to rotate your view. Use the f3 button to switch between first and third person views. Enjoy the exhibition!
7. For a complete list of Sansar keyboard shortcut controls, please see here: <https://help.sansar.com/hc/en-us/articles/224450488-Keyboards-Shortcuts-visiting-an-experience->
8. For a more detailed step by step instruction with graphs, please see below.

→ The Detailed Step-by-Step Instructions:

1. Go to <https://www.sansar.com/>
2. Click “Join for Free”.



3. Clicking “Join for Free” will automatically take you to a page and will start the package download.



4. See system requirements:

Recommended system specs

General

| | |
|------------------|--|
| Operating System | 64-bit Windows 7 SP1 or newer |
| DirectX | DirectX 11 or higher |
| CPU | Intel i5-4590 / AMD FX 8350 equivalent or greater |
| Memory | 8GB+ RAM |
| Disk space | 3 GB, plus additional disk space for VR Headset Installation |
| Bandwidth | 10 Mbps recommended; 5 Mbps minimum. Check your bandwidth |
| Audio | High-quality headphones recommended for an immersive spatial audio experience. Microphone required for voice chat. |
| Optional | Xbox One or Xbox 360 game controller |

VR

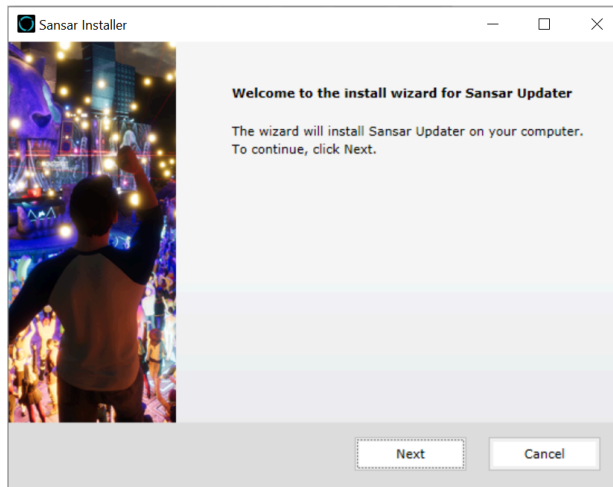
| | |
|------------|--|
| Video card | NVIDIA GTX 970 / AMD Radeon R9 290 or greater |
| Software | To experience Sansar on Vive, you must install Steam and Steam VR. Steam and Steam VR is not required for Oculus Rift. |
| Other | Compatible HDMI 1.3 video output, 2x USB 3.0 ports |

Desktop-only

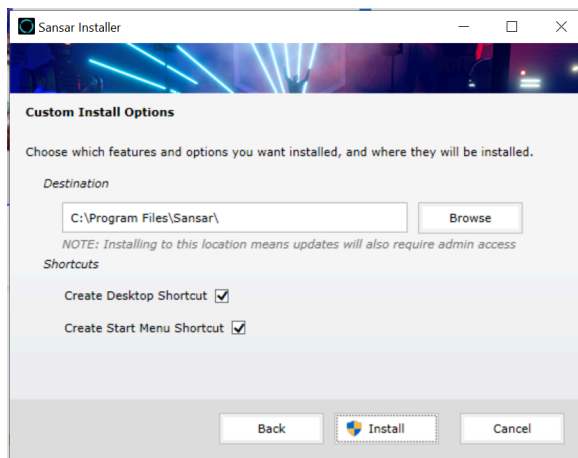
| | |
|------------|---|
| Video card | GeForce GTX 760 or greater w/ 2 GB dedicated memory |
|------------|---|

For more information on minimum system specs for both VR and desktop-only users, please see [System Requirements](#).

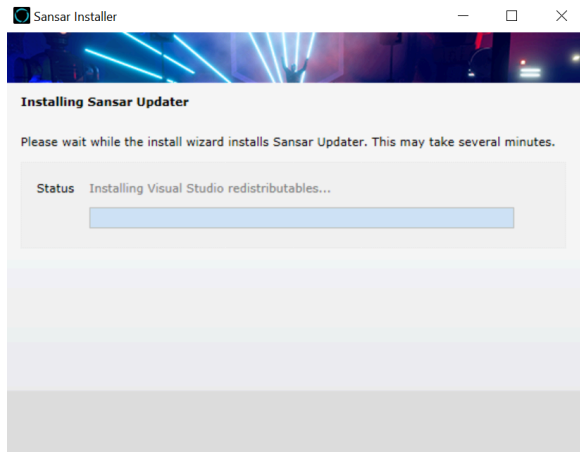
- Click on the Sansar installer package to start the install and follow the steps on the installer.



a.

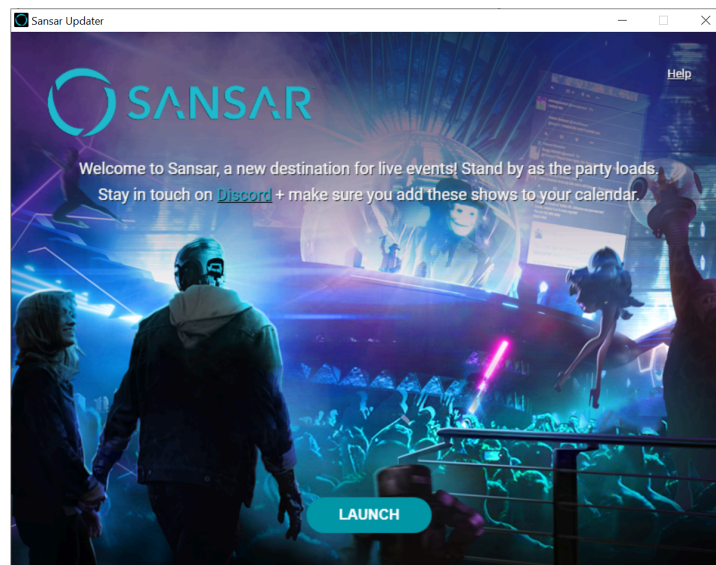


b.

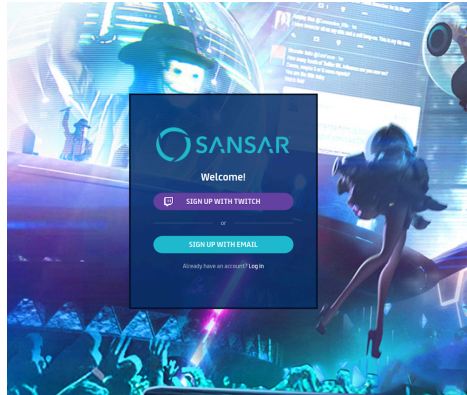


C.

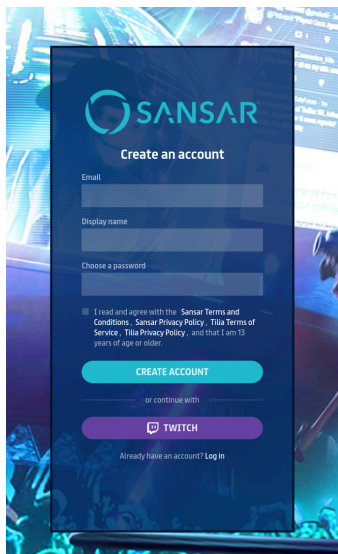
6. Once Sansar is loaded you should see the Sansar Updater and click on the bottom button that says "Launch".



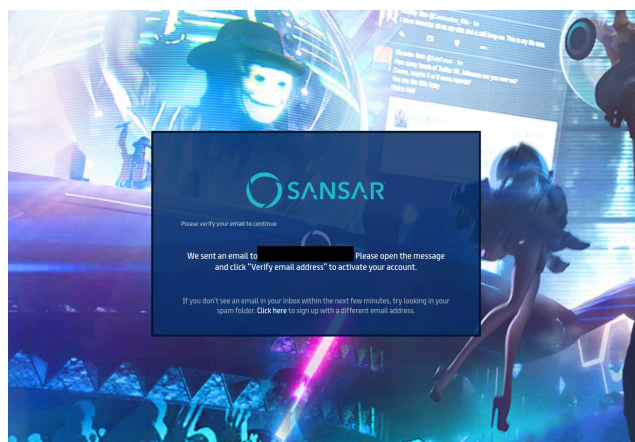
7. Then, choose your sign in method.

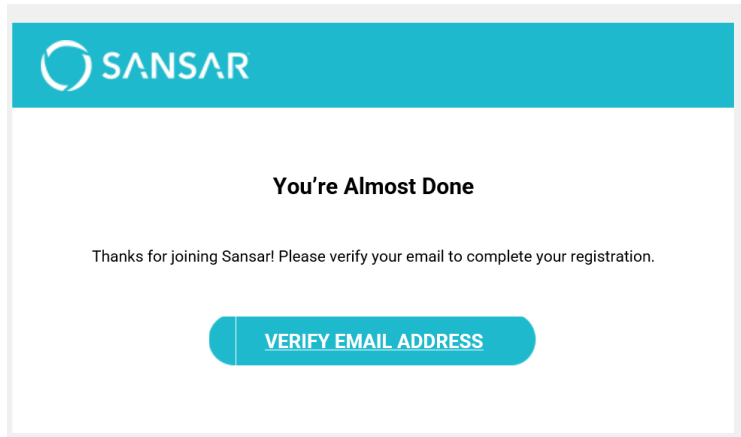


8. Use an email to register for a Sansar account.



9. Sansar will prompt you to verify your account in your email. Click the link in your email to verify your account.





10. Once verified, you can sign into Sansar in the launcher. There you will be able to choose a character to enter the virtual exhibition as.



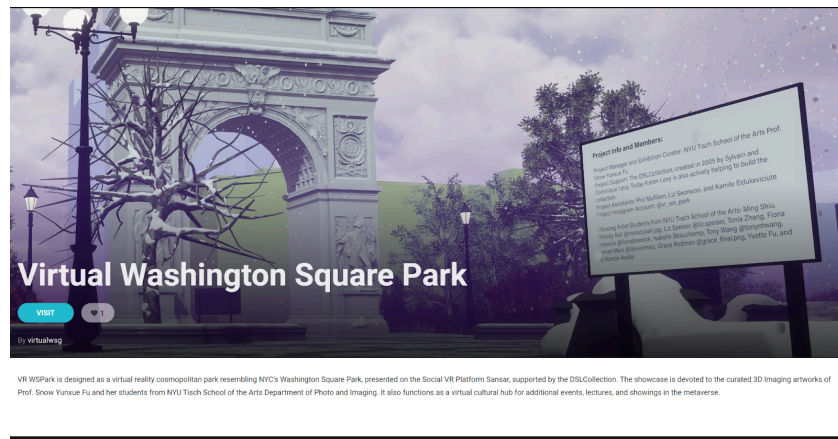
11. You will start in the basic Sansar world.



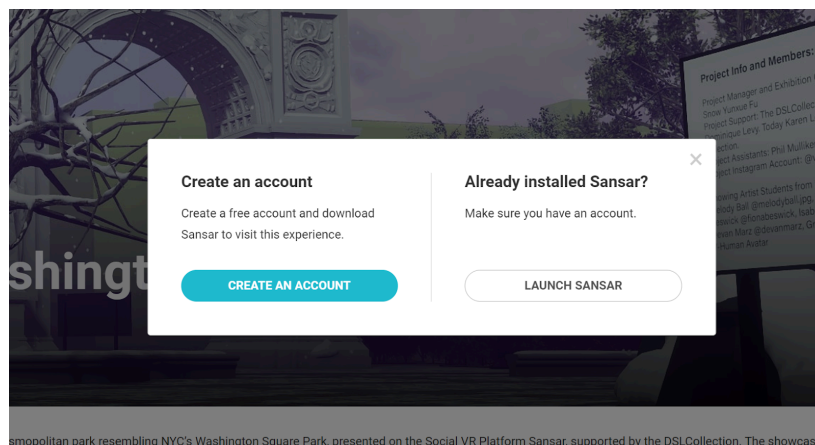
12. Use this link in your web browser:

<https://atlas.sansar.com/experiences/virtualwsg-9185/virtual-washington-square-park>

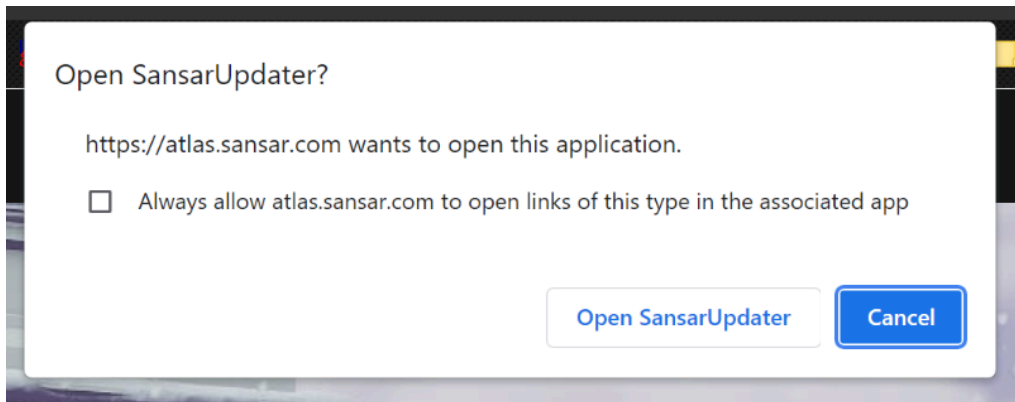
13. This will take you to the exhibition page



14. Click visit and a page should pop up with two buttons. Choose the “Launch Sansar”



15. In the pop up window choose “Open SansarUpdater”. This will launch Sansar in the VR WSPark Exhibition.



16. Use the arrow keys or WASD keys on your keyboard to move around. Hold right click your mouse and drag to rotate your view. Use the f3 button to switch between first and third person views. Enjoy the exhibition!

