

How do I know if I am on Pace?

There are three options for seeing your pacing:

Dashboard

Progress Overview

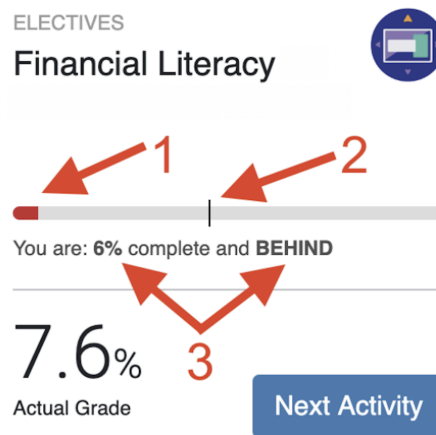
Course Report

The first step for all options is to launch your course:



Option 1 - Dashboard (shows pacing and grade): As soon as you click on your course, the dashboard will show you if you are on pace.

1. The bar graph shows you how much of the course you have completed.



2. The ticker on the line graph indicates where you need to be in the course to be considered on pace.

- If it is red, you are BEHIND pace.



You are: **6%** complete and **BEHIND**

- If it is blue, you are ON TARGET.



You are: **35%** complete and **ON TARGET**

- If it is green, you are AHEAD of pace.



You are: **100%** complete and **AHEAD**

3. The words under the bar graph show the percentage you are AHEAD or BEHIND in the course.

Work that should be completed by the current date but isn't is counted as a zero on the Relative Grade.

Option 2 - Progress Overview (Shows "birds-eye" view of progress and due dates in course):

Launch your course.

Go to the Course Map by clicking on the round icon at the top right corner of the course you want to work on.

ELECTIVES
Financial Literacy

You are: 100% complete and **AHEAD**

97%
Actual Grade

Next Activity

A red box highlights a menu icon in the top right corner, and a red arrow points to it from the left.

Due dates will be shown on the left inside the Course Map. Your due dates are specific to your enrollment date and will automatically adjust if you add the course late.

Unit Test

JUL 07 Unit Test Review

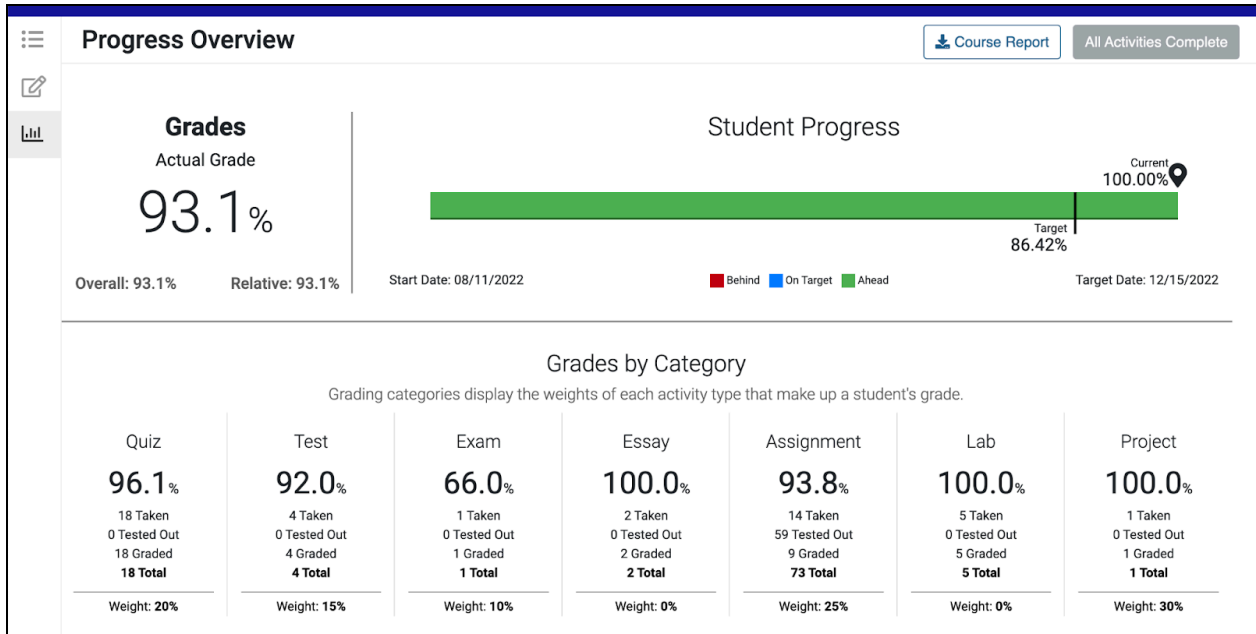
A blue circle with a white checkmark is on the left. A red box highlights the date 'JUL 07'.

From your Course Map, click on the chart icon on the left.

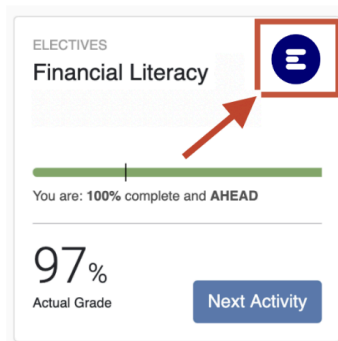
Course Map

Click here to access the Progress Overview

A red box highlights a chart icon in the left sidebar, with a red arrow pointing to it from the right.



Option 3 – Course Report (Shows scores on every completed assignment):



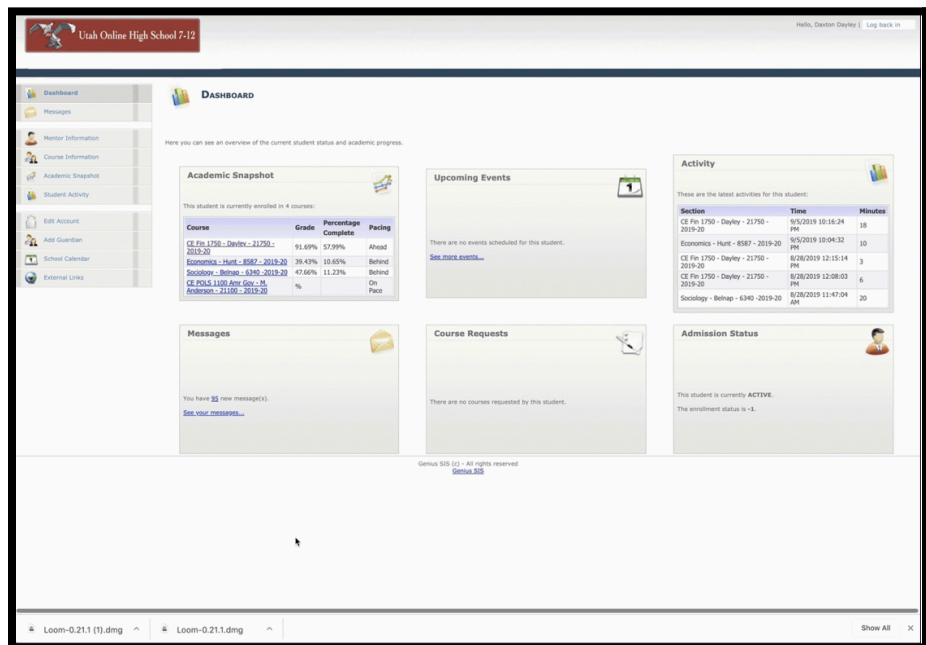
Launch your course.

Go to the Course Map by clicking on the round icon at the top right corner of the course you want to work on.

From your Course Map, download the Course Report by clicking on Course Report at the top right corner of your

screen.

Open the downloaded Course Report (check your downloads folder or desktop).



Your Course Report will show you all of your progress, including, how many attempts you have used, how long to plan for each activity, the category and your score.

Activity	Due	First Attempt	Submitted	Attempts	Est Time	Total Time	Category	Score
Unit: Welcome to Financial Literacy with Mrs. Dayley								
Lesson: Disclosure Statement & Course Details								
Welcome to Financial Literacy	08/11/2022	08/12/2022	08/12/2022	1	15m	23m 13s	Essay	100%
Unit: UNIT 1 - Financial Responsibility & Budgeting								
Lesson: Unit 1 Introduction								
Unit 1 Introduction, Objectives, Summary & Extensions	08/12/2022	08/12/2022	08/18/2022	1	15m	12m 24s	Lab	100%

On the right side:

- **Student Progress:** Percentage of the course that is complete.
- **Target Progress:** Percentage of the course that should be completed to be considered ON PACE.
- Anything in red on your progress report is alerting you that you are behind. Blue is great and green is outstanding! You CAN finish courses early!!!

On the left side:

- **Actual Grade** is the quality of your completed work that also factors in pacing. If you have completed two assignments at 100% but should have completed four assignments by that time in the course, zeros are added for those that are incomplete. *This grade will be entered in PowerSchool until the last two weeks of the semester. At that point, the Relative grade will be entered and is used for your final grade.*
- **Overall Grade** The quality of work grade. If you have done two assignments and have 100% on both, you will have 100% for Overall Grade.

- **Relative Grade** is the grade you would earn for a final grade (once all work is graded) if you quit working this very minute and never did any more work for the rest of the semester. This will eventually be your final grade.