

LUU Weekly News

[LUU Website](#)[Learning](#)[Intranet](#)[What's On](#)

Welcome to LUU Weekly News.

Hello and Farewell



This week we would like to welcome Bharati Ramesh who is joining the People Team as the Wellbeing Intern.

Learning at Work Week

Learning at Work Week 13th to 19th May 2024

This week is Learning at Work week.

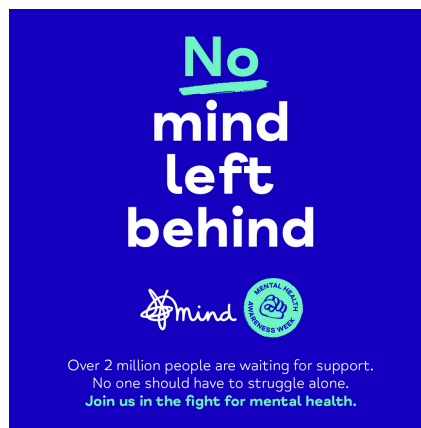
This week we will be highlighting learning opportunities, announcing the launches of In Your Shoes and Learning Pathways, and spotlighting some of

the many great skills and talents our LUU staff members have through fun activities.

Be sure to stay tuned for all staff communications coming out this week.

[Click here to read last week's Five Things on a Friday](#) to find out more about Learning at Work Week, or [head over to the Learning & Development page](#) on the Staff Intranet.

Mental Health Awareness Week



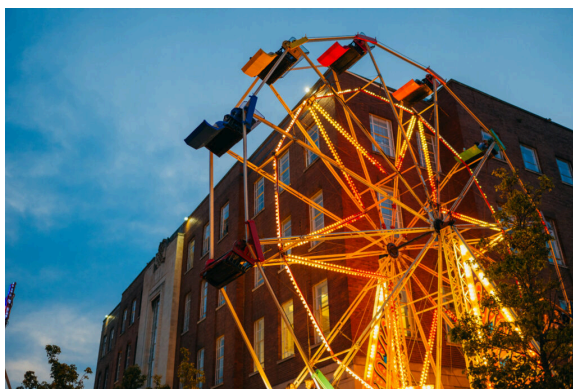
This year, Mental Health Awareness Week runs from 13 to 19 May 2024.

For Mental Health Awareness Week 2024, charity Mind are launching #NoMindLeftBehind. They're calling us all to raise awareness and vital funds for a future where everyone can get quality mental health care when they need it.

Check out the [Mental Health Awareness Week page on the Mind Website](#) to learn more.

For [mental health](#) and [wellbeing](#) resources for LUU staff specifically, please have a look at the linked staff intranet pages.

Volunteers for Leeds Ball



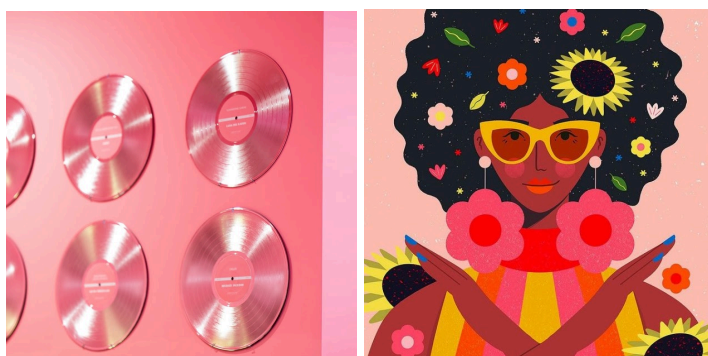
The Events Team is looking out for 3-4 staff volunteers for Leeds Ball on 8th June. This will be to help out with helping out attendees, taking tickets, wayfinding, looking after artists and general running duties as required. Timings are negotiable but we would be looking for 5pm-1am.

This is a great experience for anyone interested and it's always great fun. If you would like to volunteer please email e.haigh@luu.org.uk.

If you are interested in this opportunity, please speak to your manager about taking the time spent volunteering as TOIL in line with our policy which can be found [here](#).

For the full policy, please see Section 5.1 Hours of Work* in the [Staff Handbook](#).

LUU Social Activities



This Tuesday, we have two staff activities taking place.

At **12pm in Room 2**, the **LUU Staff Choir** will be making a comeback with their first session. Led by **Tasha Pickles**, the Choir is open to everyone to come join in for a sing along- all abilities are welcome.

At **1pm in Room 3, Anna Winter** will be holding a **Craft Lunch**- where staff are invited to bring along an art project to work on, and connect with others.

Living the Union 2.0

Living the Union is back and we have more updates to LUU to make it a better space and service for our members and staff.

This round of updates will include:

- The current Gryphon office will become the Student Exec office
 - The current Exec office will become the **Liberation Hub**
 - The office space called Unity will become the Gryphon office
- The empty office space on level 2 will be given back to students for storage and meeting needs
 - Memorabilia and memories are going to be shared on the wall space in 'pink corridor' outside the Rep room.

In phase one (which runs up to the end of July) most of the work undertaken is superficial and noise impact is likely to be minimal. Phase two will include some building work but we will communicate as much in advance of this as we can to avoid any issues with staff working in the building.

If you have any questions then speak to your manager.

Staff Handbook Update

Following our latest round of People and Values and Trade Unions meeting we have some new and changed staff policies.

Take a look at the [overview of the changes here](#).

The [staff handbook](#) on the Intranet is now live with the updated policies.

Hero of the Week



This week's heroes are:

Nathan Bladen, Clayton Chaparadza, Zoe Gray, Akira Oniwinde, Chris Mee, Tia Chippendale, Ian Hill, Ben Ault, Millie Fisher, Ruairi Frane, Chris Mee, Ben Nuttall, Beth Warriner, DJ Pete, Joshua Allan, Donna Lacy, Kea Daley and Ian Sawyer.

Remember all nominations are submitted into our Hero of the Month draw of each month. There will be 3 vouchers up for grabs, each worth £10.

[You can submit your nominations here.](#)

To find out why you were nominated, [click here.](#)

Learning Pathways



From **Monday 20 May**, Induction Learning Pathways will be live on Love to Learn.

Learning Pathways is a feature on Love to Learn that allows us to group multiple courses and modules together into a readable format where you can see your progress, and the courses you need to complete. It can also be

tailored more so that each Induction Pathway can include more team specific courses that will be useful and beneficial to do.

To learn more about Learning Pathways, [click here](#).

From Monday 20 May, these will replace the “Mandatory Courses for All” section that you would usually find on the courses page. You can find Learning Pathways on the Dashboard page. If you have any questions, please contact Katie Fox (K.Fox1@leeds.ac.uk)

Reminders

- The LGBTQ+ staff network is looking for new leaders, if you would like to learn more about this opportunity please contact Katie at K.Fox1@leeds.ac.uk.
- Are you looking to get outside more, get active or maybe even make some new friends? Check out the upcoming opportunities to participate in Sports and Physical Activities at UoL in [last week's weekly news](#).

Useful Links

[LUU Cultural Calendar](#) | [Equality and Inclusivity](#) | [Climate and Sustainability at LUU](#)