

# Urban Paths

I've come across several little 'not so secret' paved urban paths.

The first I remember was in Columbus Ohio. It is a footpath with a causeway to the elementary school that avoids an otherwise long walk along the main road. It does not show on Google maps and because of the tree cover it's difficult to ascertain exactly its route but I marked it the best I remember.



The south entrance.





This is a local golf cart/pedestrian path that shows on Google maps as Temple Trail. But it has no physical road sign. It appears to be just another golf cart path for the adjacent golf course. Entrance:

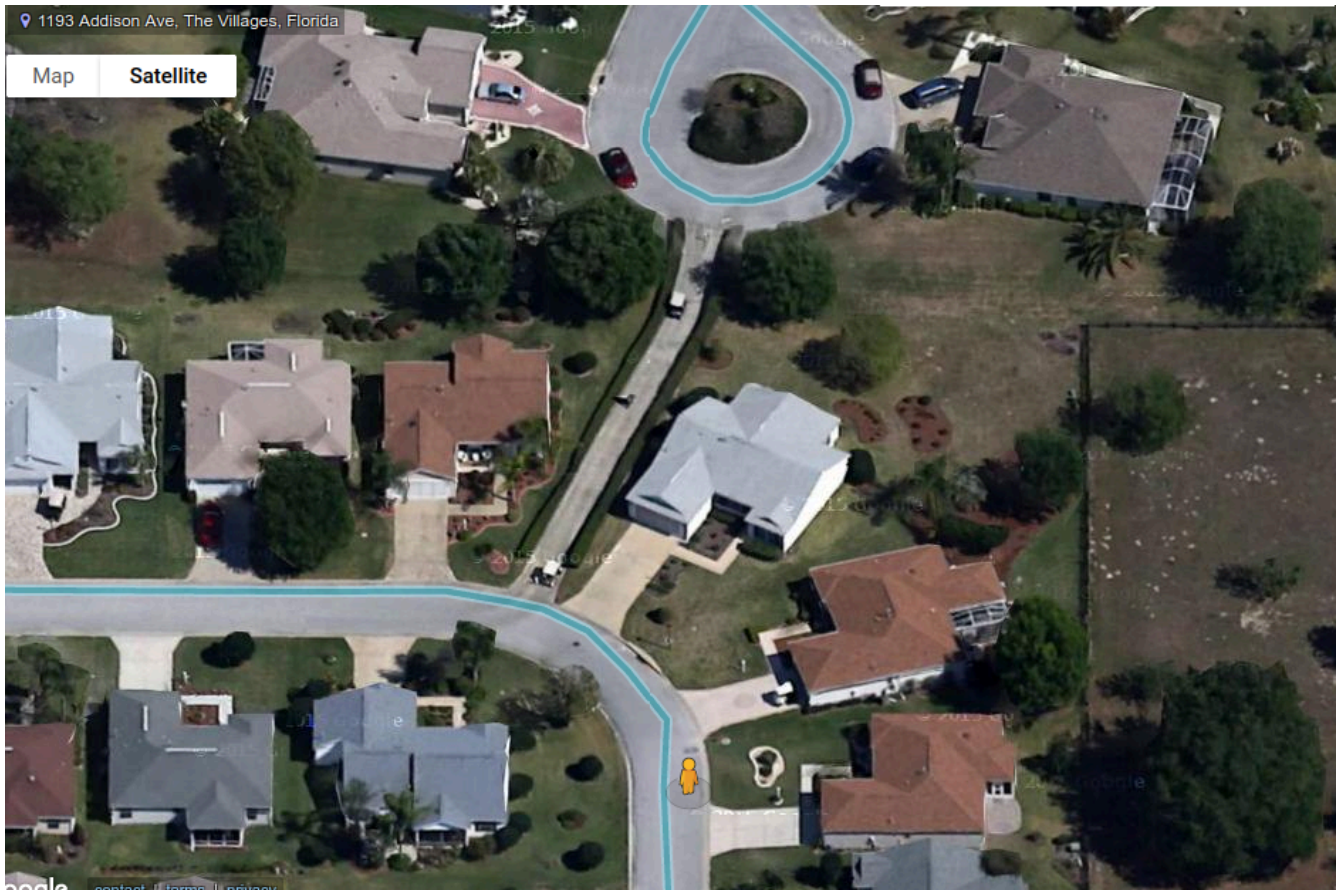


This was built because golf carts are not allowed on the road the Temple faces. Google Map view:





Another local path I came across. While it is possible to go between the two areas without using this path, it's a several-mile trek.



While it does not have an official route name on Google Maps. A user-defined place indicator calls it Addison Path. Here is the view of its entrance:



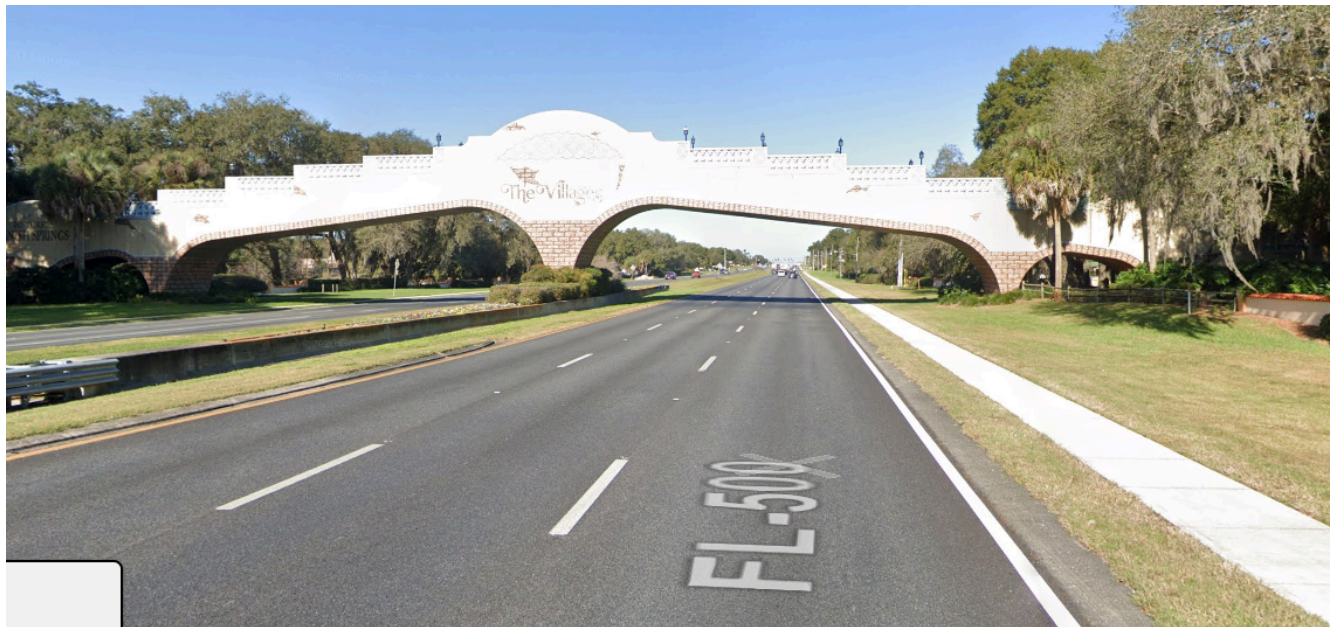


I found this in a parking lot behind several small businesses. Where does this go?





Well, that was quite a surprise. It is a golf cart bridge over US 27.



This looks very neat and well kept. Let us see where this path goes.



To the country club of course!







This looks like it is just for the golfers.



But no. Just a few feet in, the golf course's path and the walking path separate.

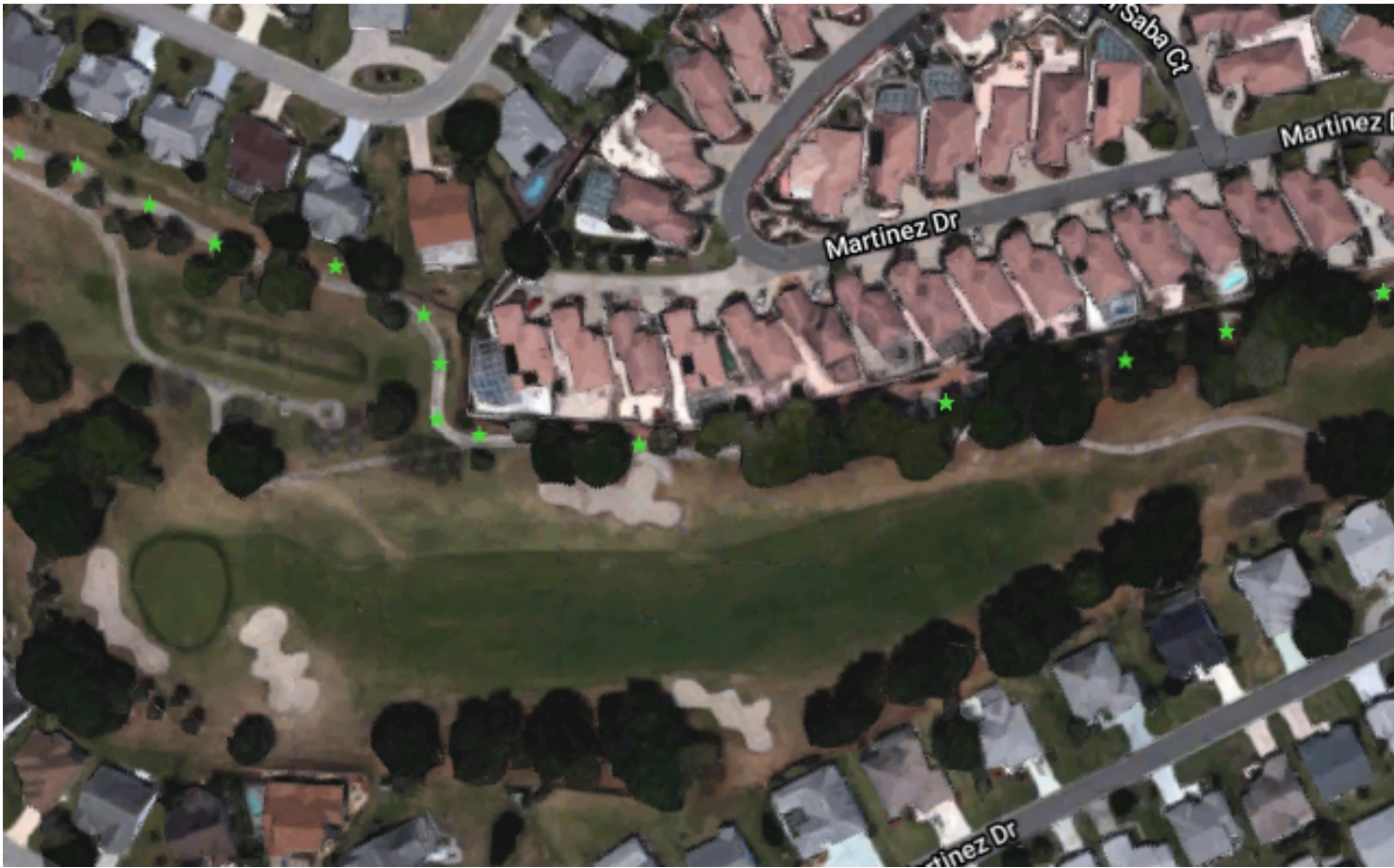
The walking path turns to the left and goes behind some homes. Next, it goes behind a set of villas.





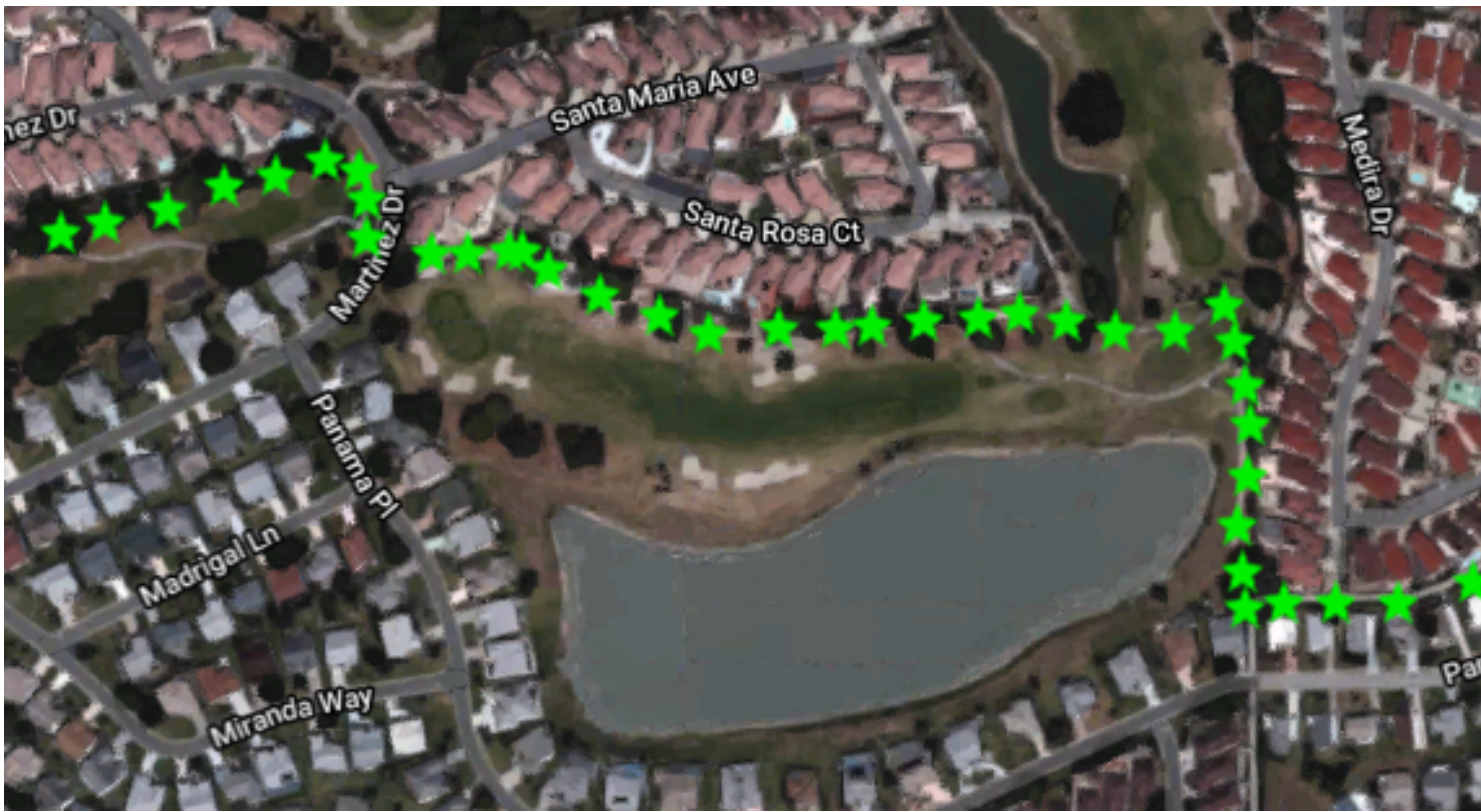
Continuing past the villas, crossing a street and behind another set of villas.





Onward, crossing a golf course, around the end of a pond, and behind two other sets of villas.





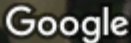
Around another pond end.





Behind another set of villas and houses. (This is getting long.)



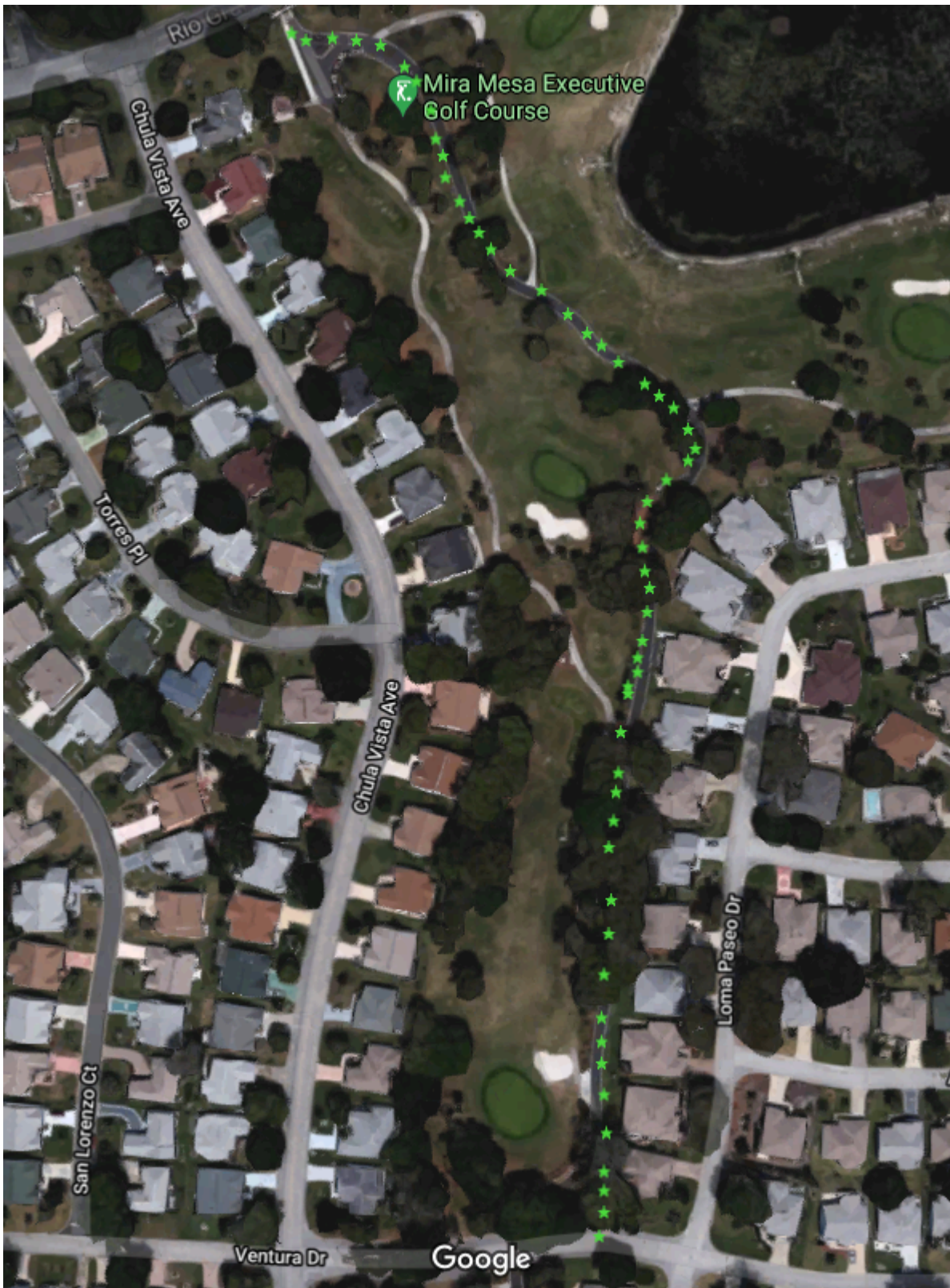


Passing Chula Vista Recreation Center, the path continues through a tunnel under Rio Grande Ave.

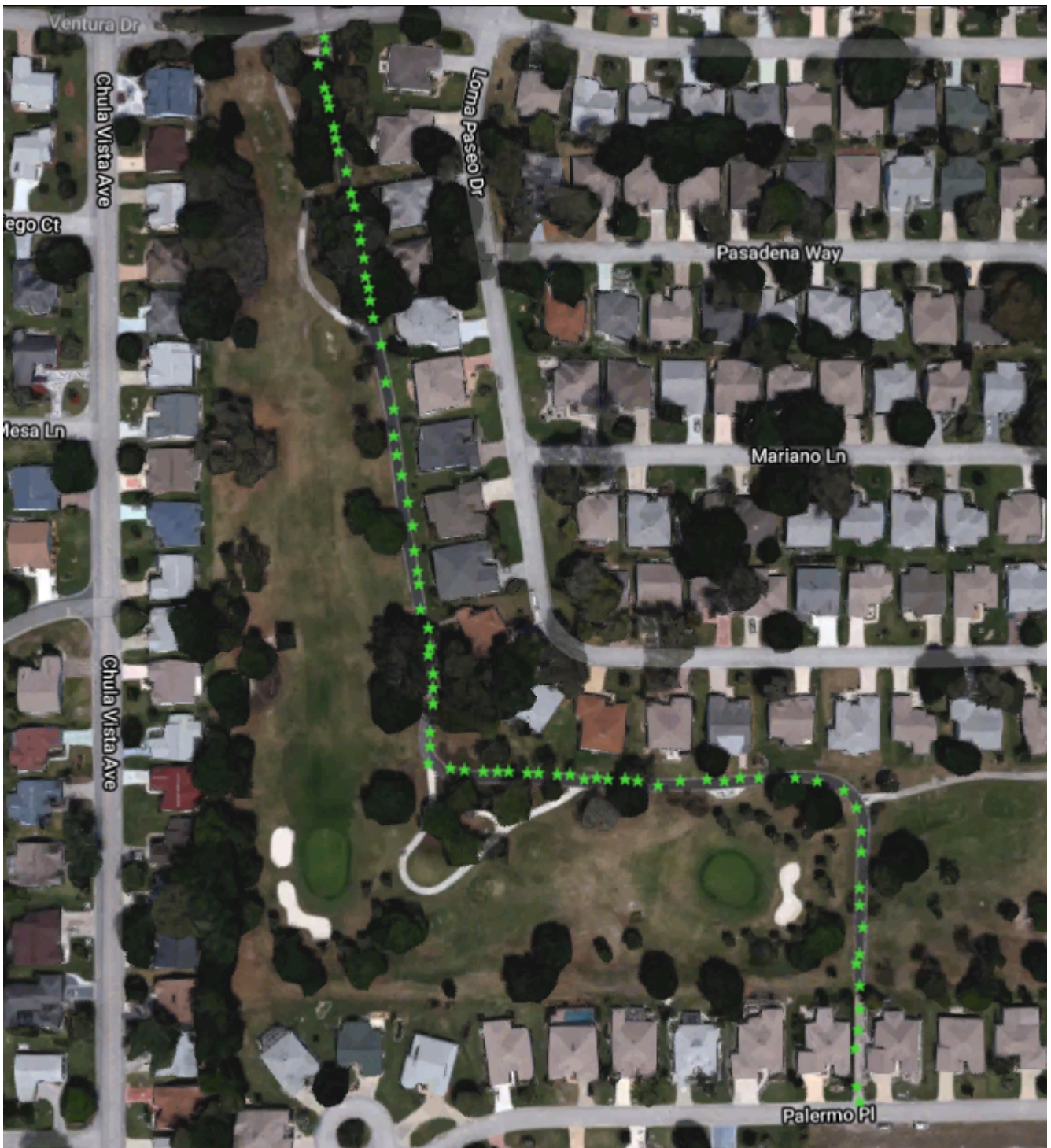


Emerging from the tunnel the path continues along a golf course.





Moving along the golf course, then turning left then right to cross the golf course.



The path ends at Palermo Pl.





- end