



Burlington School District Attn. Lyall Smith, Director of Facilities
150 Colchester Road, Burlington, VT, 05401

January 31, 2025

Clerk of the Works Site Visit Report - IAA H.O. Wheeler Elementary School Project

Another week of progress by the contractors at the project site this week. There is a new contractor on site that started this week, Elegant Floors, a flooring contractor. See the pictures at the end of this report.

Benoit Electric, the electrical contractors, is continuing with pulling wire to the rough-in Jboxes for the data, fire alarm system, electrical outlets and the electrical switches. They are starting to finalize this work in the 1904 wing of the building. For the most part, Benoit Electric is complete in the 1965 wing of the building. The BSD electrical team continues work on electrical outlets, and data wiring on this project. See the pictures at the end of this report.

Denis-White, the framing contractors, has started placing blocking in the walls to help in the future when things need to hung up on the walls. This extra blocking helps so that the sheetrock will not break when something heavy is hung on the wall, it's an added extra support. This is common practice to do this type of wall blocking in commercial construction. Door frames are being installed. Once these types of items as mentioned above are complete, the rest of the sheetrock will be hung; with the tapers right on their toes. See the pictures at the end of this report.

The contractors have given us a schedule to finish, and the end schedule for the contractor to be out of the building is mid-July. What these pictures do not show are all of the construction workers that are working on this site day-after-day. There is a lot going on at the IAA HO Wheeler School from week to week. This is typical of the construction process, the process ramps up, slows down, ramps back up again, and slows down. But by having an end schedule, gives all of the contractors that stride to work towards to achieving that goal.



The floors are starting to be taken up.



The finished picture of the old linoleum floors being completely removed before the pile of debris is brought out to the construction dumpsters.



Even the classroom flooring has been removed. There were six workers from Elegant Floors working on site this week, and the entire 1904 wing of the building floors have been completely removed..



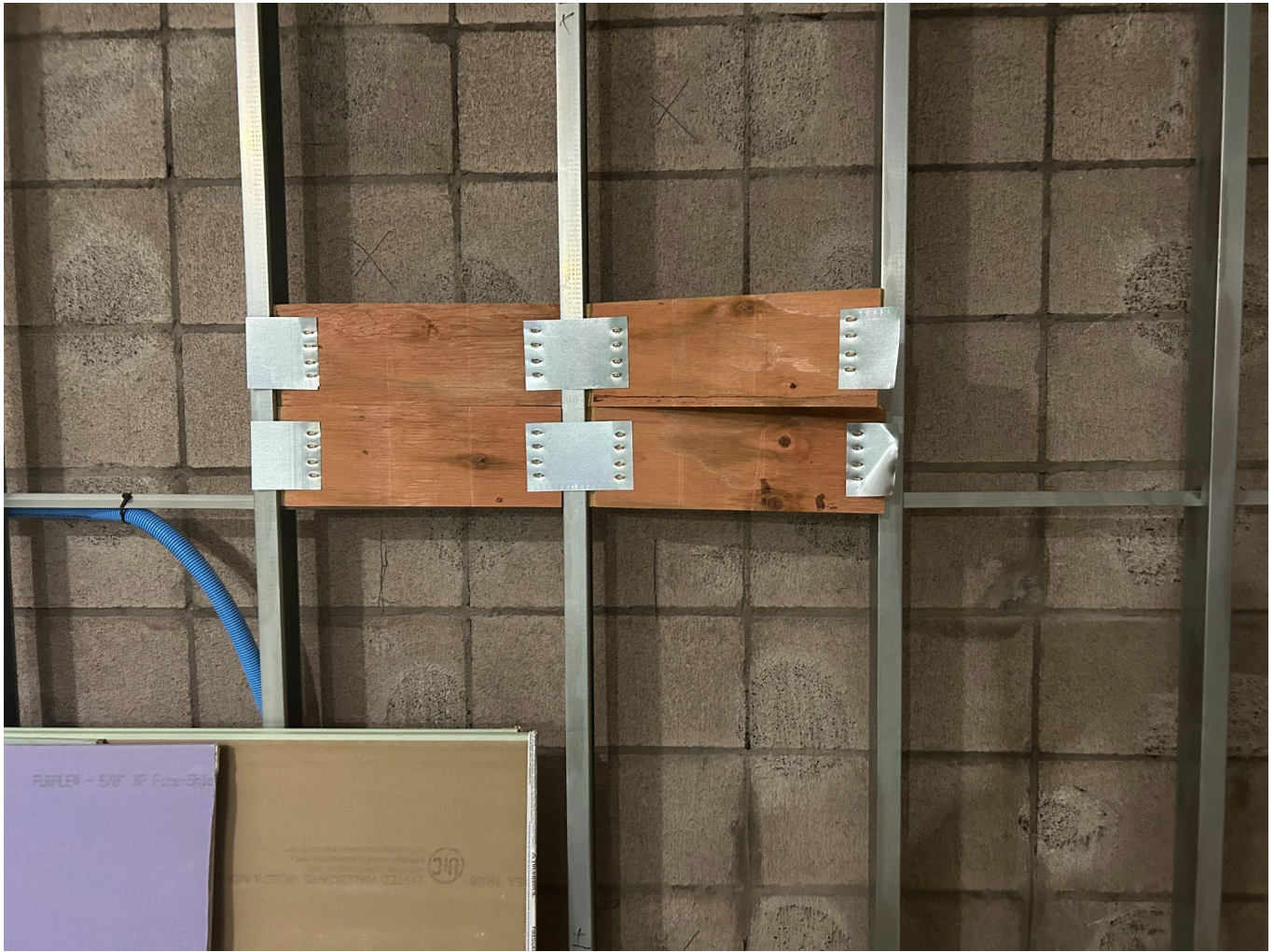
Benoit Electric has removed all of the old stage lighting in the Gym.



Now that the old piping insulation has been removed, and the stage lighting has been taken down, the rest of the GYM ceiling has been removed.



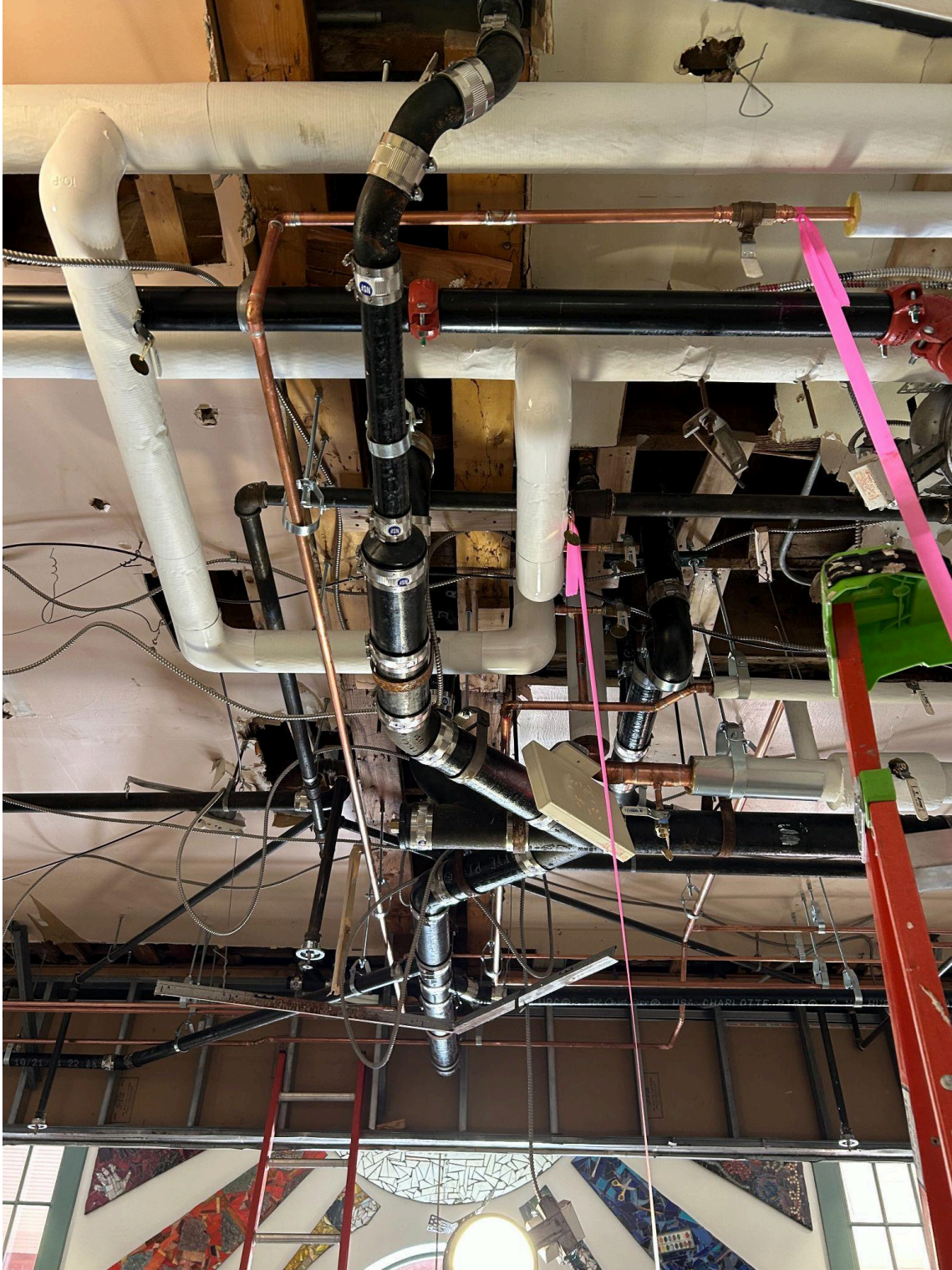
A door frame has been installed in the classroom in the 1965 wing of the building. This door is the door that allows people to go from classroom to classroom without having to go out into the corridor.



An example of the wood wall blocking that is being installed. More pictures of this will be shown next week.



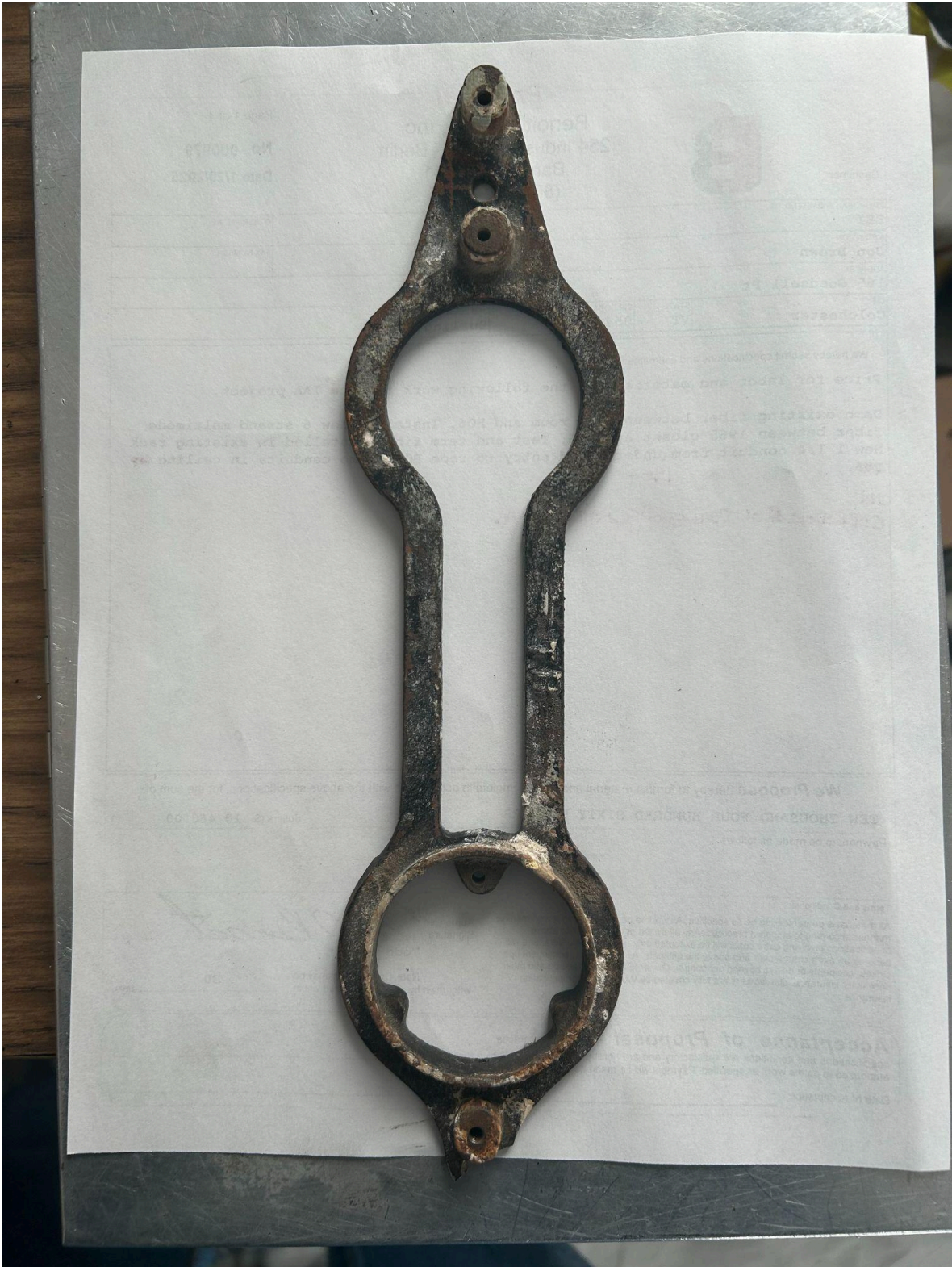
The BSD electrical team has finished placing the extra electrical outlets on the wall in the 1904 wing of the building. They are mostly completed on the first floor, and will soon be completed on the second floor.



Last week, we showed this piping being installed. This week, the piping insulator is going behind the plumbing contractor and insulating that piping. We don't want condensation from the piping dripping on the new ceilings that will be installed to cover all of this piping up.



The electrical contractor is finishing up the last of their demolition of extra electrical items in the walls of the classrooms in the 1904 wing of the building. We believe that the gray pipe that comes out of the wall and bends down is the old original gas piping that was for the gas lights in these classrooms. Yes gas piping for lighting in the original 1904 wing of the building.



A picture of the wall bracket that would have held not only the switch for the gas light, but the gas light fixture itself. We are trying to do some history on these. That is why the hole in the walls in the picture on the page before is so big. This wall bracket is about 10 inches tall.