

# GRAND PRIX CYCLISTE DE CHARLEVOIX

## TECHNICAL PROGRAM

May 29–30–31, 2026

28th edition



présente

# LES GRANDS RENDEZ-VOUS CYCLISTES DE CHARLEVOIX

propulsés par

*VÉLOCHARLEVOIX*



This event is sanctioned by the  
federation



## **TABLE OF CONTENTS**

<b>Organization Name and Contact(s)</b>	<b>3</b>
<b>Organizing Committee</b>	<b>3</b>
<b>Event sanctioned by the FQSC</b>	<b>4</b>
<b>Participant eligibility and insurance</b>	<b>4</b>
<b>Registration</b>	<b>4</b>
<b>Detailed schedule</b>	<b>6</b>
<b>Event website</b>	<b>8</b>
<b>Services available at the event site</b>	<b>8</b>
<b>Course</b>	<b>8</b>
<b>Runner safety on the course(s)</b>	<b>14</b>
<b>Services available on the course(s)</b>	<b>15</b>
<b>Maximum time to finish</b>	<b>16</b>
<b>Bib placement</b>	<b>17</b>
<b>Results and award ceremonies</b>	<b>17</b>
<b>Applicable regulations</b>	<b>23</b>
<b>Volunteers</b>	<b>23</b>
<b>Relevant nearby addresses</b>	<b>23</b>
<b>A message from the presenting partner</b>	<b>24</b>
<b>Partners</b>	<b>25</b>

## Organization name and contact(s)

*Vélo Charlevoix is a non-profit organization dedicated to promoting and developing cycling in Charlevoix through three main initiatives: technical training and social cycling activities with the Charlevoix Cycling Club, the organization of events through the Grands Rendez-vous Cyclistes de Charlevoix (GRVCC), and the development (consulting, design, construction, and maintenance) of off-road trails with Sentiers Vélo Charlevoix.*

Event Facebook page: [www.facebook.com/velocharlevoix](http://www.facebook.com/velocharlevoix)

Organization website: [www.velocharlevoix.com](http://www.velocharlevoix.com)

Event page on the FQSC website: [www.velocharlevoix.ca/evenement-cycliste/grand-prix-cycliste/](http://www.velocharlevoix.ca/evenement-cycliste/grand-prix-cycliste/)

Email for questions: [info@velocharlevoix.com](mailto:info@velocharlevoix.com)

## Organizing Committee

Marc-Olivier Bouchard, **Race Director and Technical Director**

Martin Simard, **technical director and logistics coordinator**

Marie-Claude Laurendeau-Desmarais, **general coordination, lodging, communications, and finances**

Martin Simard, **Caravan Manager**

Martin Gauthier, **signage**

Pierre-Paul René, **first aid**

Jacques Galarneau, **announcing and Ceremonies Protocol**

### **ROAD SAFETY PARTNERS**

Sûreté du Québec

Transports Québec

EMC | Motorcycle Escorts

Municipalities of Charlevoix

### **COMMISSIONERS AND TIMEKEEPER**

Vallérie Trottier, **Chief Commissaire**

Nathalie Perron, **Assistant Commissaire**

Clara Barbes, **Assistant Marshal**

Anita Naud, **Assistant Referee**

Jean Boily, **Assistant Referee**

Nancy Daigle, **Assistant Commissioner**

Felix-Antoine Malo, **Assistant Commissioner**

Julien Hardy-Cardinal, **Photo Finish Operator**

**To be confirmed, secretary**

## Event sanctioned by the FQSC

The event is sanctioned by the Fédération québécoise des sports cyclistes (FQSC) and meets organizational standards designed to ensure it takes place in the safest possible environment. At least one official is always present to represent the federation.

## Participant Eligibility and Insurance

### License:

All cyclists must obtain a license to participate in an FQSC-sanctioned event in order to benefit from the federation's liability and accident insurance coverage.

**Regular License:** Annual cyclist license, UCI or FQSC. Participants with a regular license must provide proof of their license, either at the time of online pre-registration (license number to be provided) or directly on-site (license to be presented).

**Event license\*:** A license valid only for the duration of the event, costing \$20 when registering online.

*\* Event licenses are available to all Quebec residents (and Canadian residents), and to non-Canadian residents provided they can demonstrate event accident insurance coverage at the time of registration.*

In the event of an accident during the event, an accident report form will be completed on-site by a member of the organizing committee and sent to the FQSC. You will also be required to take certain steps in the event of a claim. More information is available on the FQSC website:

<https://fqsc.net/assurances>

## Registration

For this event, registration is online only.

[https://forms.registration4all.com/EventRegistration/Register\\_Sport\\_Event.aspx?EventID=228671](https://forms.registration4all.com/EventRegistration/Register_Sport_Event.aspx?EventID=228671)

Regular rate deadline: until Tuesday, May 26, 2026, at 11:59 PM.

Late-bird rate: Wednesday, May 27, 2026, at 12:00 a.m. through Thursday, May 28, 2026, at 4:00 p.m.

## Registration deadline:

Thursday, May 28, 2026, at 4:00 PM, subject to current fees.

\*It is very important to meet this deadline.

## List of participants:

The FQSC will publish the official list of participants on the morning of **Friday, May 29**, on their website [www.fqsc.net](http://www.fqsc.net).

## Confirmation of attendance:

All participants must confirm their attendance according to the following schedule:

- For Criterium participants: Junior (M), Junior (W), Senior 1-2 (M), Senior 3 (M), Senior (W)  
**Friday, May 29: 3:00 PM to 5:30 PM** at the GRVCC tent at the Critérium start line: 7, rue de la Balade  
[View on map](#)
- For other participants: U17 (M), U17 (W), Master 1 (M), Master 2 (M), Master 3 (M), Master 4 (M), Master 5 (M), Master 1 (W), Master 2 (W), Master 3 (W)  
**Race bibs can be picked up on Friday, May 29: 6:00 PM to 7:30 PM**  
at the GRVCC tent at the Critérium starting line: 7, rue de la Balade  
[View on map](#)  
OR  
**Saturday, May 30: 8:00 AM to 11:00 AM** at the start of the time trial: 7, chemin Saint-Laurent  
[View on map](#)

## Meeting for riders and coaches:

**Friday, May 29, starting at 9:15 p.m.** at Baie-Saint-Paul City Hall, 15 Forget Street

[View on map](#)

## Registration requirements:

By registering, the participant confirms that they accept and agree to comply with applicable regulations. They also agree to follow the instructions of event staff, race officials, FQSC cycling supervisors, and security and first aid personnel.

**Each participant accepts the risks associated with their participation, including health risks, the risk of falls and collisions, as well as risks related to road traffic (if applicable) and adverse weather conditions.**

It is the responsibility of each cyclist to ensure, prior to participating in an event, that they are in perfect health and capable of the physical exertion required, and sufficiently trained to participate in the event for which they are registering.

Under no circumstances shall the FQSC or the UCI be held liable for any accidents or health issues a cyclist may experience in connection with participation in a recreational cycling event.

## Detailed Schedule

### FRIDAY, MAY 29, 2026 – CRITERIUM (1.2 km loop)

Eligible categories: Junior (M), Junior (W), Senior 1-2 (M), Senior 3 (M), and Senior (W)

4:30 PM Junior, Senior (W): 25 laps

---

5:30 PM Junior (M): 30 laps

---

6:30 PM Senior 3 (M): 30 laps

---

7:30 PM Senior (M): 35 laps

---

### SATURDAY, MAY 30, 2026 – TIME TRIAL

(15.6 km out-and-back – starts every 30 seconds)

Eligible categories: U17 (W | M), Junior (W | M), Senior 1-2 (M), Senior 3 (M), Senior (W), Master 1-2-3 (W), Master 1 (M), Master 2 (M), Master 3 (M), Master 4 (M) and Masters 5 (M)

8:00 a.m. Start of the race – Starts every 30 seconds

---

Starting order: Junior (F), Senior (F), U17 (F) – 3-minute break  
Senior 1-2 (M), Senior 3 (M), Junior (M), U17 (M) – 3-minute break  
Master 1 (M) – 1-minute break  
Master 2 (M) – 1-minute break  
Master 3 (M), Master 4 (M), Master 5 (M) – 1-minute break  
Master 1-2-3 (W)

\*Second-year U15 riders start with the U17s and do not have a separate classification.

### SATURDAY, MAY 31, 2026 – ASCENSION

(12.5 km – 380 meters of elevation gain – maximum gradient 24%)

Eligible categories: U17 (W | M), Junior (W | M), Senior 1-2 (M), Senior 3 (M), Senior (W), Master 1-2-3 (W), Master 1 (M), Master 2 (M), Master 3 (M), Master 4 (M) and Master 5 (M)

**3:00 PM** Start (1) \* Senior 1-2 (M)

---

**3:10 PM** Start (2) \* Junior (M), Senior 3 (M)

---

**3:25 PM** Start (3) \* Masters 1 (M)

---

**3:35 PM** Start (4) \* Masters 2 (M)

---

**3:50 PM** Start (5) \* Junior (W), Senior (W), Masters 1-2-3 (W)

---

**4:00 PM** Start (6) \* Masters 3 (M), Masters 4 (M), Masters 5 (M)

---

**4:10 PM** Start (7) \* U17 (M), U17 (W)

---

\*Second-year U15 riders start with the U17s and do not have a separate classification.

**SUNDAY, MAY 31, 2026 – ROAD RACE (130 km, 87 km, and 61 km)**

Eligible categories: U17 (W | M), Junior (W | M), Senior 1-2 (M), Senior 3 (M), Senior (W), Master 1-2-3 (W), Master 1 (M), Master 2 (M), Master 3 (M), Master 4 (M) and Master 5 (M)

**9:00 AM** Start (1) \* Senior 1-2 (M) (130 km)

---

**9:08 AM** Start (2) \* Junior (M), Senior 3 (M) (130 km)

---

**9:16 AM** Start (3) \* Master 1 (M), Master 2 (M) (130 km)

---

**9:24 AM** Start (4) \* U17 (W), Junior (W), Senior (W), Master 1-2-3 (W) (87 km)

---

**9:32 AM** Start (5) \* U17 (M), Master 3 (M), Master 4 (M), Master 5 (M) (87 km)

---

**9:40 AM** Start (6) \* Charlevoix Granfondo (87 km)

---

**9:42 AM** Start (7) \* Charlevoix Granfondo (61 km)

---

IMPORTANT: The schedule is subject to change

\*Second-year U15 riders start with the U17s and do not have a separate classification.

## Event website



### **Baie-Saint-Paul City Hall**

15 Forget Street  
Baie-Saint-Paul, Quebec  
G3Z 3G1

[\*View on map\*](#)



### **Saint-Aubin Educational Center**

200-101 Saint-Aubin Street  
Baie-Saint-Paul  
G3Z-2R2

[\*View on map\*](#)

### **Parking:**

The main parking lot is located behind the Centre Éducatif Saint-Aubin. Volunteers will be on hand to direct you to a parking spot.

## Services available at the event site

Several partners of the Grands Rendez-Vous Cyclistes de Charlevoix offer lodging and dining options for participants. Visit the [Accommodations](#) page on our website to discover participating establishments and take advantage of discounts.

For the Road Race, we have a changing room, restrooms, and showers available at the Saint-Aubin Educational Center.

## Routes

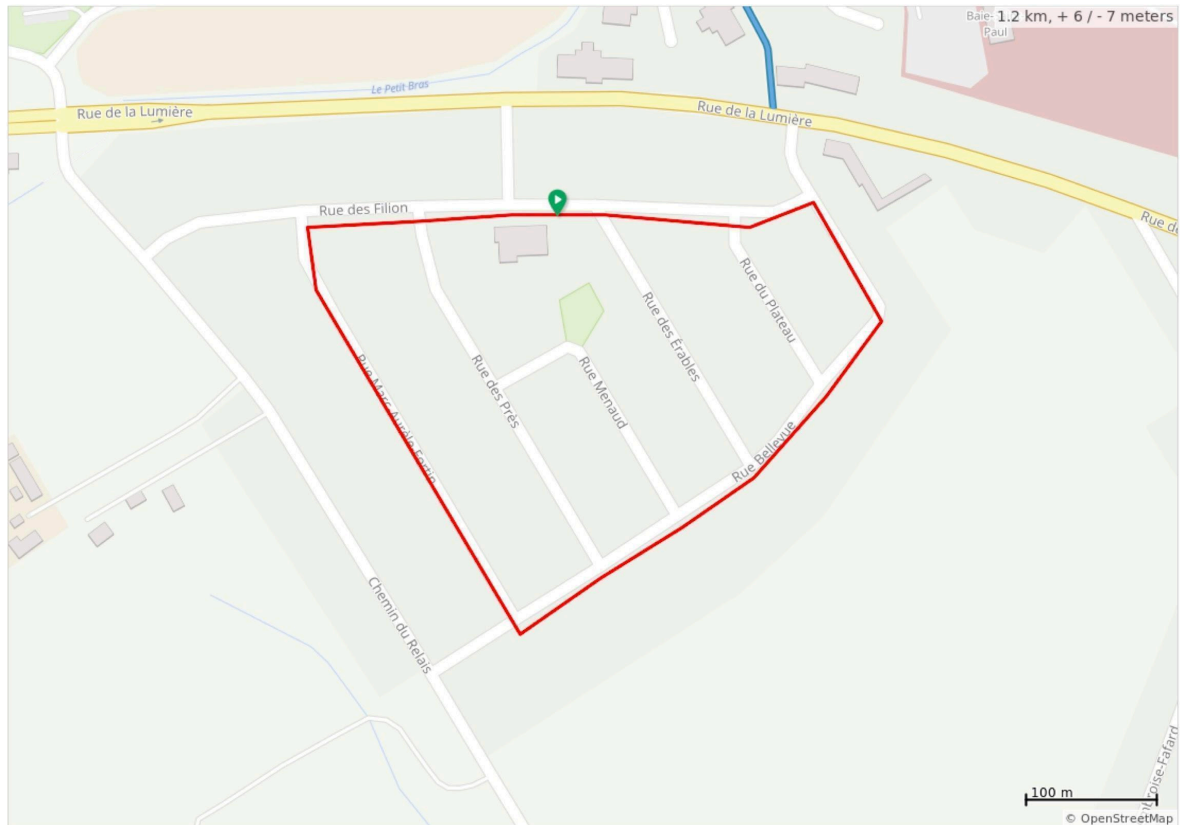
All route maps are available on our website:

[www.velocharlevoix.ca/evenement-cycliste/grand-prix-cycliste/](http://www.velocharlevoix.ca/evenement-cycliste/grand-prix-cycliste/)

**FRIDAY, MAY 29, 2026 – CRITÉRIUM (Rue de la Balade, Baie-Saint-Paul)**

**Eligible categories: Junior (M), Junior (W), Senior 1-2 (M), Senior 3 (M), and Senior (W)**

Course link: [ridewithgps.com/routes/29492654](https://ridewithgps.com/routes/29492654)

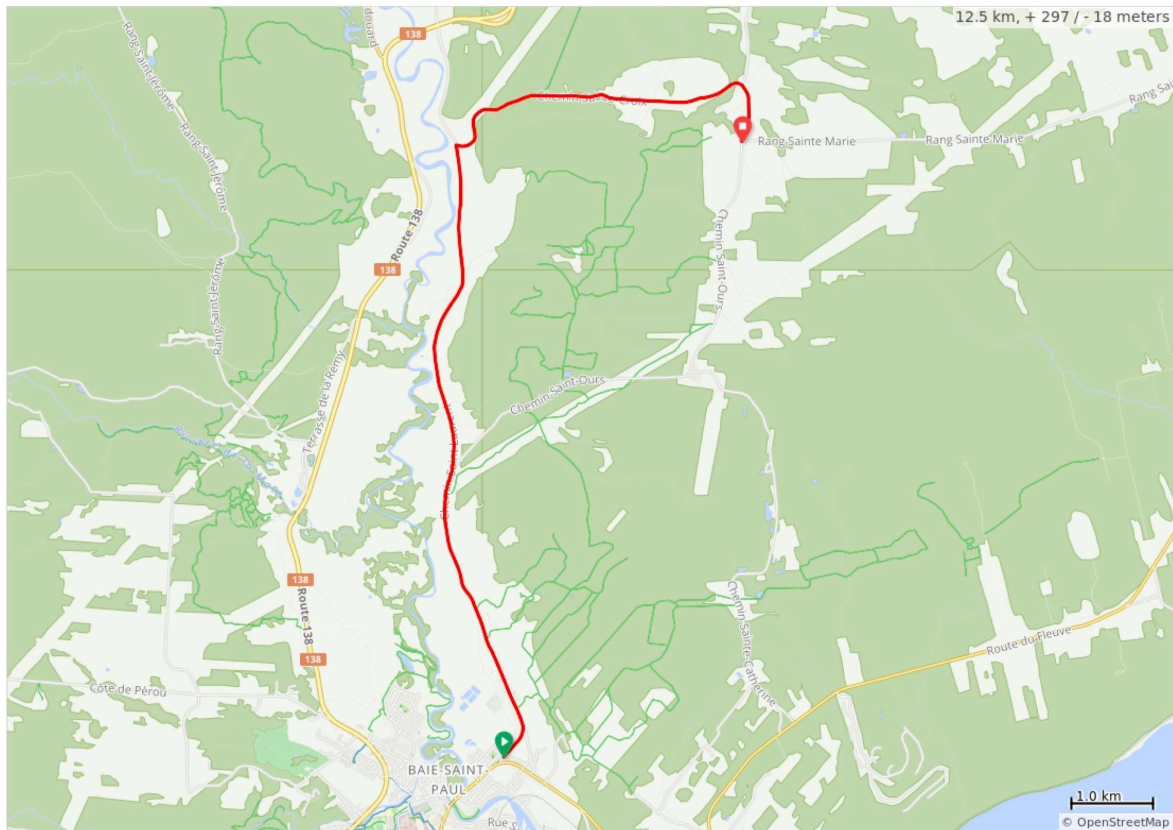




**SATURDAY, MAY 30, 2026 – ASCENSION (7 Chemin Saint-Laurent, Baie-Saint-Paul)**

**Eligible categories:** U17 (W | M), Junior (W | M), Senior 1-2 (M), Senior 3 (M), Senior (W), Master 1 (W), Master 2 (W), Master 3 (W), Master 1 (M), Master 2 (M), Master 3 (M), Master 4 (M), and Master 5 (M)

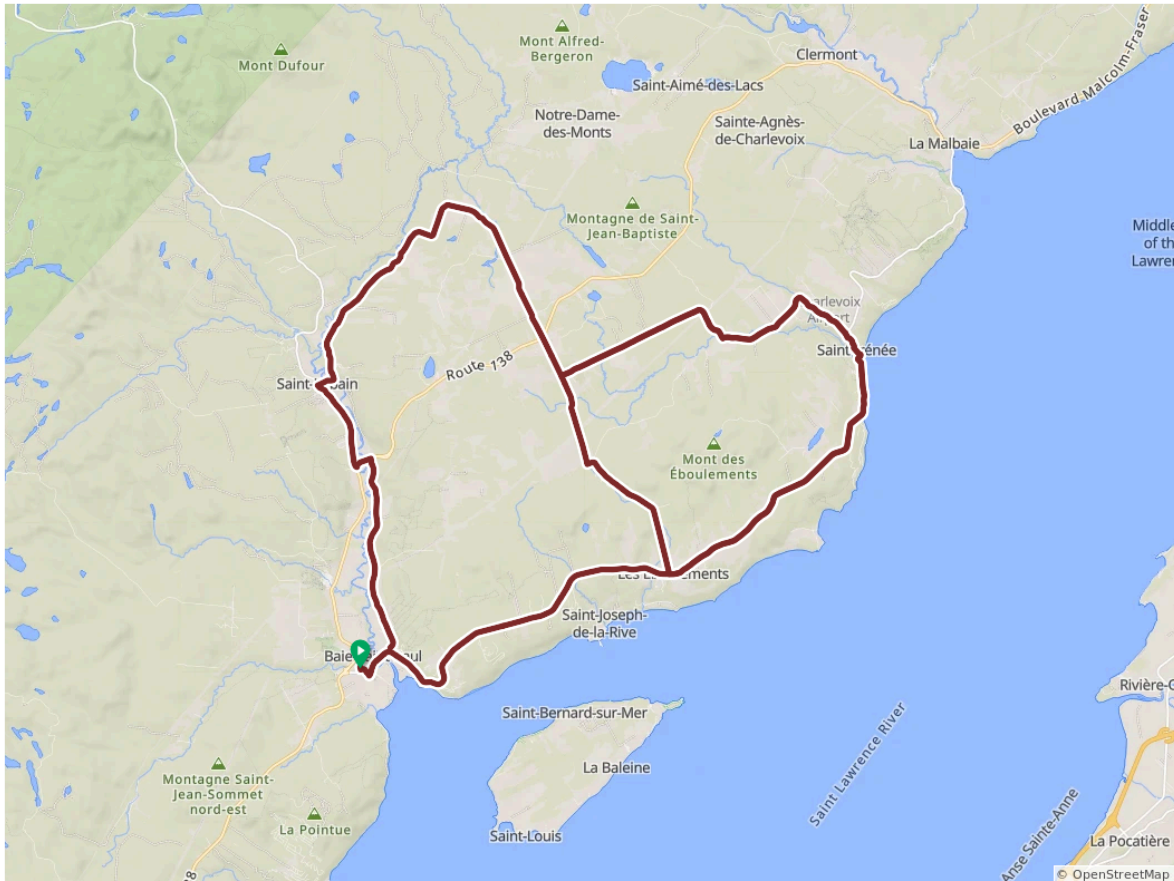
Course link: [ridewithgps.com/routes/29492884](https://ridewithgps.com/routes/29492884)



**SUNDAY, MAY 31, 2026 – ROAD RACE (Saint-Aubin Educational Center)**

**Eligible categories: Junior (M), Senior 1-2 (M), Senior 3 (M), Master 1 (M), Master 2 (M)**

Course link: [ridewithgps.com/routes/54067502](https://ridewithgps.com/routes/54067502)

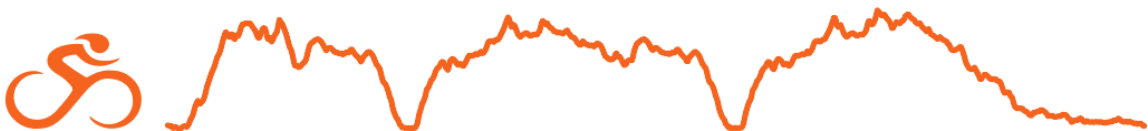


GPC 2026 - 130 km

**131** km  
DISTANCE

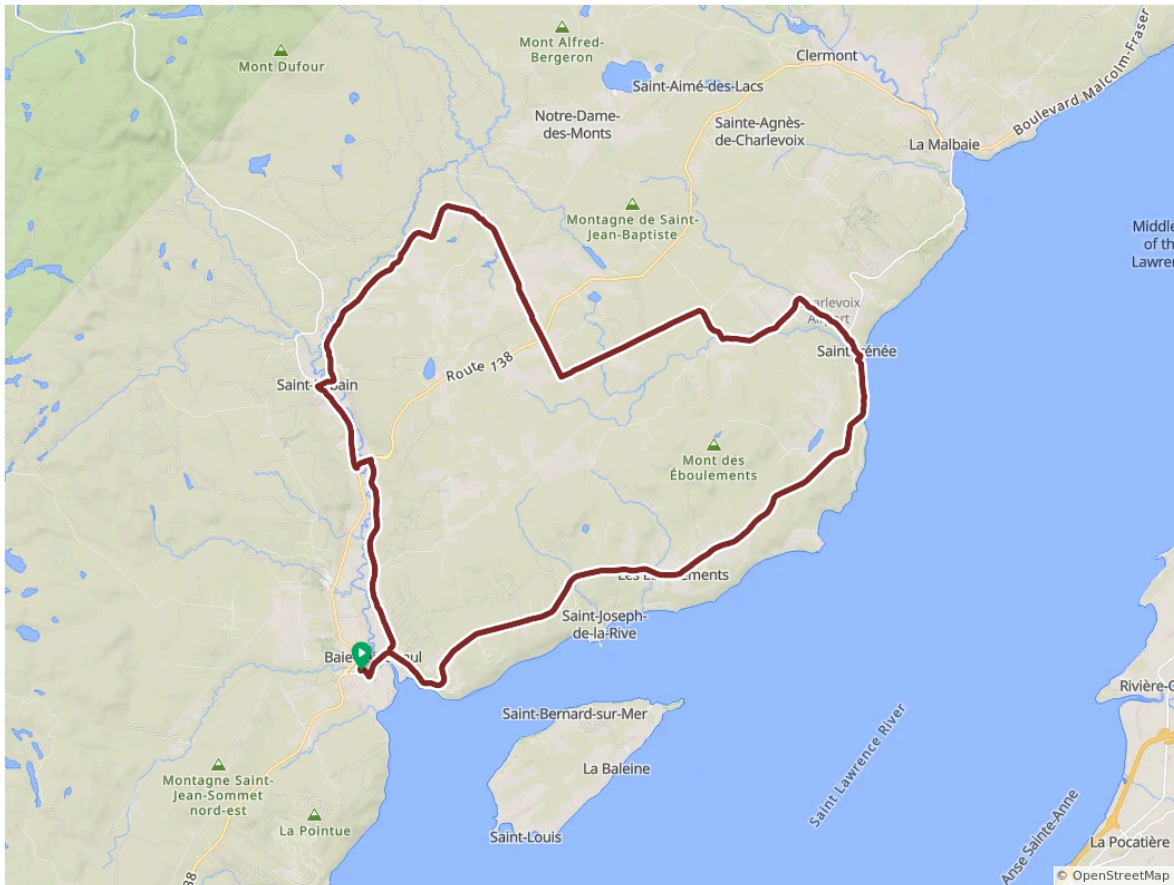
**2 102** m  
DÉNIVELÉ POSITIF

**9,5** %  
MAX GRADE



**Eligible categories: U17 (W | M), Junior (W), Senior (W), Master 1-2-3 (W), Master 3 (M), Master 4 (M), and Master 5 (M)**

Course link: [ridewithgps.com/routes/54065548](https://ridewithgps.com/routes/54065548)

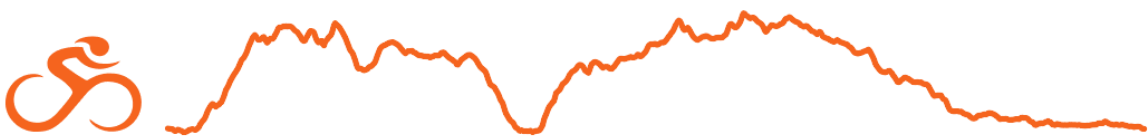


GPC et Granfondo 2026 - 87 km

**86,9** km  
DISTANCE

**1 387** m  
DÉNIVELÉ POSITIF

**9,5** %  
MAX GRADE



## Rider safety on the course(s)

### Road safety:

It is imperative that cyclists stay in the right lane. In the very rare cases where cyclists may use both sides of the road, this will be specified at the start, if applicable. On climbs, curves, or in crosswinds (road edges), crossing the yellow line will not be tolerated, as this is often when motorists fail to see cyclists approaching and a serious accident can occur. In case of non-compliance, race officials will apply the prescribed penalty, namely the disqualification of the offending cyclist, as the safety of cyclists is at stake.

**Support Convoy (Mountain and Road)** – The organization will have a convoy of several dozen vehicles to ensure the safety of the riders and transport race officials, media, breakdown equipment, or riders who have withdrawn. These vehicles will be grouped near the start area, by start wave, and properly identified. Volunteers will also be on site to direct riders and support staff to the breakdown service vehicles.

**Mechanical Assistance** – The organization does not provide neutral mechanical assistance. However, the organization makes recovery vehicles available to riders, which may contain repair equipment.

If they wish to include their spare equipment in the support convoy, riders must properly label their wheels and place them in the vehicle of their choice.

When a breakdown occurs, **the rider must raise their hand** to signal that they are slowing down and to indicate to the driver of the nearest support vehicle that they should stop. Repairs are performed on the right side of the road. The rider retrieves and installs the equipment themselves. The vehicle driver will provide access to the equipment stored in their vehicle but will not provide any other assistance to the rider. Whenever possible, the rider whose bike has broken down should use their own equipment, but the organization will not conduct any specific checks regarding this. **A rider who has their repair equipment in an organization vehicle therefore tacitly agrees that another rider may use their equipment.** At the time of the repair, the rider must provide the driver with their bib number as well as the name or number indicated on the equipment being used.

**The organization and volunteers are not responsible for any damage, theft, or loss of equipment that may occur before, during, or after the race.**

**Team Vehicles** – In addition to the organization's support convoy, the organization will allow team vehicles (Junior and Senior categories only) to join the convoy. To qualify for a team vehicle, a team must consist of at least two women or three men from the same club.

These vehicles will be positioned behind the organization's vehicles at each start wave, based on the position of each team's best rider after the first 2 or 3 stages completed, as applicable. The vehicles will be identified by numbers provided by the organization.

Team vehicle drivers must hold a valid license, which must be presented to the chief commissaire during the technical directors' meeting. Team vehicles within the caravan must comply with UCI standards regarding dimensions (**maximum height of 1.66 meters**). Non-compliant vehicles will be placed at the rear of the caravan. **Team vehicle drivers must report to the designated area no later than 8:00 a.m. at the assigned parking lot. Latecomers will be relegated to the end of the caravan.**

**NEW THIS YEAR** – Teams must reserve their spot in the caravan by Friday, May 22, by emailing [info@velocharlevoix.com](mailto:info@velocharlevoix.com) .

To improve communication quality during the race, teams will now use two-way radios. You can rent one for \$40. Please specify this in the same email. Payment must be made via bank transfer to the same email address. The price has been adjusted due to changes in two-way radio technology.

No requests will be accepted after this date or during the Friday evening meeting.

### Medical Services:

Medical services will be available during the event. This service will also be mobile along the event route(s) to respond as needed.

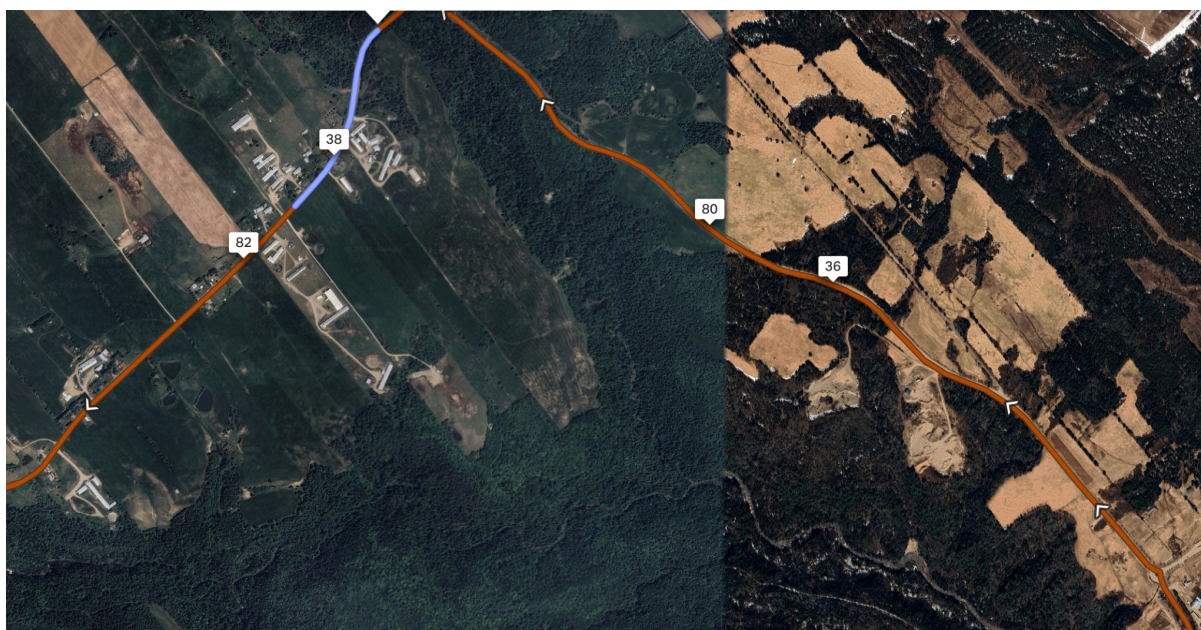
### Weather conditions:

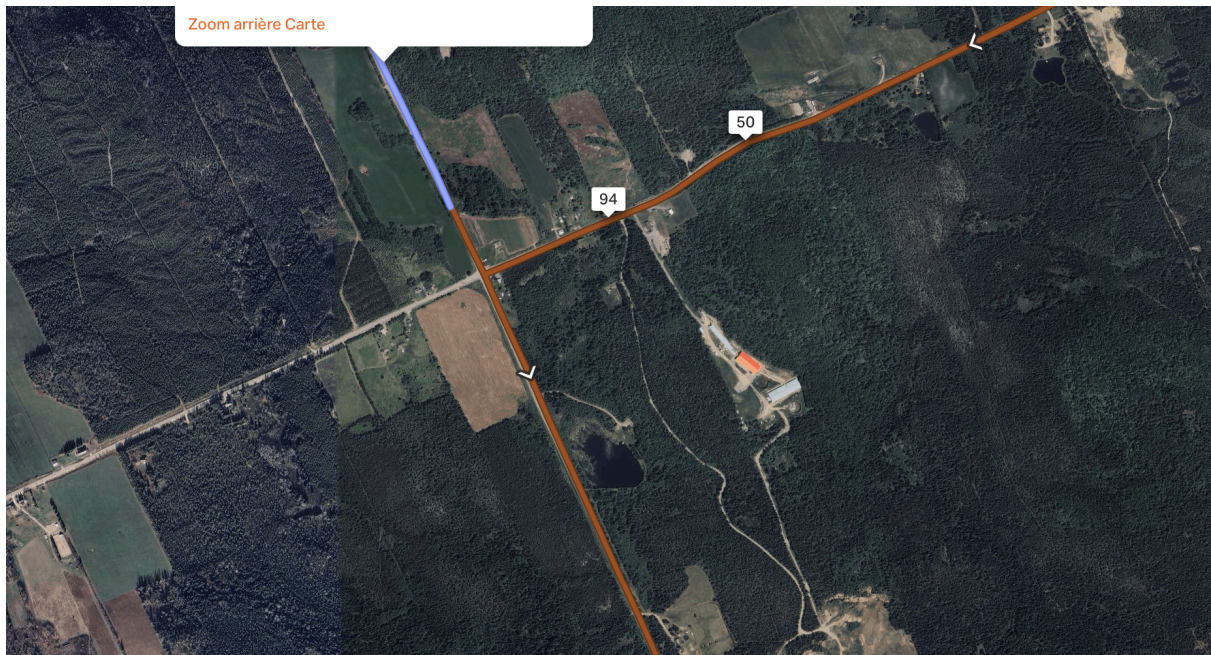
Even if the weather is inclement, the event will still take place. If conditions are extreme, the decision to cancel the event will be made by the chief marshal and the members of the organizing committee. This decision will be made on the day of the event and cannot be contested.

## Services available along the course

During the Routier race, three aid stations will be set up (see the maps below):

- from kilometer 37.6 to 38.2 on the 87 km and 130 km courses and from kilometer 81.2 to 81.8 on the 130 km course, on Chemin Saint-Pierre;
- from kilometer 51 to 51.5 of the 87 km course and from kilometer 94.5 to 95 of the 130 km course, on Chemin Cartier.





At the finish line, a refreshment area will be available where participants can drink, snack, take shelter, and warm up.

For all events, portable restrooms will be available at each start or finish line.

Finally, the courses will end at the entrance to Chemin Saint-Laurent, so there will be no shuttle service this year.

## Time limit

At kilometre 76.9 (on the 87 km course) or kilometre 120.5 (on the 130 km course), all cyclists who have not passed this point by 1:30 p.m. will be asked to use the broom wagon.

## Bib placement

Permanent race numbers and frame plates are mandatory for the Grand Prix Cycliste de Charlevoix. For those not licensed with the FQSC, a temporary yellow race number will be distributed and must be returned on Sunday after the final race.

Those who have not yet picked up their permanent race number and frame plate may do so on-site.

- A. Upon registration, the rider **must present their license** and provide their permanent bib number.
- B. Riders **must wear two bibs** in all events except the individual time trial, where they are required to wear only one bib, positioned on the side and at the edge of the finish platform.



## Results and Ceremonies

### Location of stage ceremonies

**CRITÉRIUM:** GRVCC tent at the start of the Critérium (de la Balade street).

**TIME TRIAL, CLIMB, ROAD, AND OVERALL:** The award ceremonies will begin with the Time Trial and Climb events and are scheduled for around **1:45 PM** in the courtyard of the Centre Éducatif Saint-Aubin.

### Schedule of award ceremonies

Medals and stage prizes will be awarded according to the established schedule.

Overall podium places will be awarded to the top five finishers in each category.

Medals will be awarded to the <sup>1st</sup>, <sup>2nd</sup>, and <sup>3rd</sup>-place finishers for each stage and in the overall standings. Trophies will be awarded to the <sup>1st</sup>, <sup>2nd</sup>, and <sup>3rd</sup>-place finishers, and the **"2026 GPCC Winner"** jersey will be awarded to our overall champions in each category.

Cash prizes will be awarded to riders in the **U17 (F | M), Junior (M | F), Senior 1-2 (M), and Senior (F)** categories for all individual races and the overall standings. The total value of the prizes will depend on the participation rate. See the table on the next page for more information.

It is the riders' responsibility to come forward to collect their medals and prize money. No prize money will be mailed or transferred.

The race officials and photo finish team are doing their best to process results quickly. The top five times will be available shortly, and the full results will follow as soon as possible.

Nb. Coureurs par catégorie	Sr 1-2 H et F		Jr H et F	
1 ou 2	n/a	n/a	n/a	n/a
3 à 4	175	G – 115 (70 / 45)	105	G – 105 (65 / 40)
		E – 60; (15) * 4		n/a
5 à 9	280	G – 200 (100 / 60 / 40)	175	G – 115 (70 / 45)
		E – 80; (20) * 4		E – 60; (15) * 4
10 à 14	525	G – 385 (150 / 115 / 80 / 40)	350	G – 250 (125 / 75 / 50)
		E – 140; (35) * 4		E – 100; (25) * 4
15 à 19	790	G – 570 (170 / 140 / 115 / 85 / 60)	440	G – 320 (130 / 95 / 65 / 30)
		E – 220; (35 / 20) * 4		E – 120; (30) * 4
20 à 24	1 050	G – 750 (225 / 190 / 150 / 110 / 75)	525	G – 385 (150 / 115 / 80 / 40)
		E – 300; (45 / 30) * 4		E – 140; (20 / 15) * 4
25 à 29	1 315	G – 915 (275 / 225 / 185 / 140 / 90)	700	G – 500 (150 / 125 / 100 / 75 / 50)
		E – 400; (60 / 40) * 4		E – 200; (30 / 20) * 4
30 à 39	1 575	G – 1 115 (335 / 280 / 225 / 165 / 110)	875	G – 635 (190 / 160 / 125 / 95 / 65)
		E – 460; (60 / 35 / 20) * 4		E – 240; (35 / 25) * 4
40 à 49	2 100	G – 1 500 (400 / 340 / 280 / 220 / 160 / 100)	1 050	G – 750 (225 / 190 / 150 / 110 / 75)
		E – 600; (75 / 45 / 30) * 4		E – 300; (35 / 25 / 15) * 4
50 à 59	2 625	G – 1 865 (495 / 420 / 350 / 275 / 200 / 125)	1 225	G – 885 (265 / 220 / 175 / 135 / 90)
		E – 760; (95 / 55 / 40) * 4		E – 340; (40 / 25 / 20) * 4
60 et plus	2 800	G – 2 000 (535 / 455 / 375 / 295 / 210 / 130)	1 225	G – 885 (265 / 220 / 175 / 135 / 90)
		E – 800; (100 / 60 / 40) * 4		E – 340; (40 / 25 / 20) * 4

Athletes in the U17 (F | M) categories from all regions, including Quebec: cumulative total only for the top 5 positions G-350 (\$105/\$90/\$70/\$50/\$35) no stage prize money.

## Applicable Regulations

The FQSC regulations: [Chapter 4 - Recreational Cycling](#) apply to all events sanctioned by the federation.

## Event-specific regulations:

The race will be conducted under the regulations of the UCI, CC, and the FQSC. Penalties from the UCI, CC, or the FQSC will apply. The UCI's anti-doping regulations may be enforced.

The **Grand Prix Cycliste de Charlevoix** is an interprovincial sanctioned competition. In 2026, this road cycling race will serve as a selection event for junior and U23 athletes, both men and women, who will represent Team Quebec at the Canadian Road Championships. It is also a qualifying event for **the Tour de l'Abitibi** in the **Junior (M)** category. Finally, and for several editions now, the **Grand Prix Cycliste de Charlevoix** has been an integral part of the **Super Prestige** series organized by **the Association des Cyclistes Vétérans du Québec (ACVQ)**.

Eligible categories are: U17 (W | M), Junior (W | M), Senior 1-2 (M), Senior 3 (M), Senior (W), Master (W), Master 1 (M), Master 2 (M), Master 3 (M), Master 4 (M), and Master 5 (M).

Cumulative time rankings will be applied. The winners of the Grand Prix Cycliste de Charlevoix in the Junior (F | M), Senior 1-2 (M), Senior 3 (M), and Senior (F) categories will accumulate, within their respective categories, the best time from the four scheduled stages (Critérium, Time Trial, Climb, and Road Race). As for the U17 (F | M), Master 1 (F), Master 2 (F), Master 3 (F), Master 1 (M), Master 2 (M), Master 3 (M), Master 4 (M), and Master 5 (M), the winners of the Grand Prix Cycliste de Charlevoix will accumulate, in their respective categories, the best time across the three scheduled stages (Time Trial, Climb, and Road Race).

To be eligible for the final standings, a rider must complete each of the 3 or 4 stages, depending on the schedule for their category. To participate in the next stage, a rider must have completed the previous stage.

**With the exception of the Critérium, riders must stay in the right lane at all times.**

The routes and their elevation profiles are available online on the [Vélo Charlevoix website](#).

**Waiver of Image Rights** – By registering for **the Grand Prix Cycliste de Charlevoix**, the participant waives his or her image rights and grants the organization permission to use any audiovisual material in which he or she may appear for promotional, advertising, or other purposes. The participant also waives the right to receive any form of compensation for the use of audiovisual material in which he or she appears.

**Withdrawal** – A rider who withdraws must immediately notify the race official at the table, or face a \$50 fine (Article 12.1.40.6) of the UCI regulations.

**Penalty** – A cyclist found guilty of unsportsmanlike conduct, fraud, or an irregular act; of inappropriate behavior in public; of insulting a race official; or of any other similarly inappropriate act that does not meet the ethical and safety standards of the sport of cycling may be removed from the race by the Chief Race Official. A more severe penalty, depending on the severity of the offense, may also be imposed by the Steering Committee. We remind you that it is prohibited to litter on the course.

**Jerseys** – Riders must wear a short- or long-sleeved jersey or shirt that covers the shoulders.

**Signatures** – Each rider must sign the starter’s confirmation register no later than 15 minutes before the start of their race. A rider who starts the race without completing this confirmation within the allotted time will be fined \$10.

**Refreshment Zone** – Refreshments are prohibited on descents as well as during the **first 30 and last 20 kilometers**. The race committee may reduce the distances specified above depending on the race category, weather conditions, and the course profile and length. This decision will be announced before the start of the race. No refreshments will be provided on the course by the organization.

**Time-Limited Riders** – Generally, there are no riders classified as time-limited in road races. However, any rider who arrives more than a certain time after the peloton crosses the finish line will be removed from the race by the support car and assigned a time corresponding to that of the last rider to complete the full race distance, plus the time they were behind when crossing the line.

\*Time after the peloton crosses the finish line - **30 minutes** (for example: peloton arrives at 11:30 a.m. + 30 minutes = 12:00 p.m. end of the race for this category).

**Trash** – Riders are prohibited from throwing trash, water bottles, or any other objects onto the course outside the designated area, under penalty of a fine.

**Finish Line** – The finish line is located near 7 Chemin Saint-Laurent. [View on map.](#)

At the finish line, a refreshment area will be available where participants can drink, snack, take shelter, and warm up.

Support staff can reach the finish line via Rue Guay from Route 362. Traffic on Chemin Sainte-Laurent will be restricted. Cyclists may use Leclerc Street to return to the starting line (Centre Éducatif Saint-Aubin) on their own and with caution after the race. **Since the courses will end near the starting line, there will be no shuttle service this year.**

## **Specific Rules for the Criterium:**

**Management of lapped riders** – General principles:

- A. In criteriums where the circuit is very short, narrow, or involves risks, riders who have been dropped and are not part of the main peloton will be immediately withdrawn when they are caught by the lead car.
- B. If a breakaway gains a lap on the main peloton, it may rejoin the peloton with the same rights and obligations as the other riders. Unless otherwise specified by a specific rule, all riders finish on the same lap as the winner.
- C. For races with more than one category and more than one podium (e.g., Junior H/Senior 3, Master 3-4-5, Women), all riders lapped by the lead group remain in the race. Furthermore, if all riders in a category are lapped, the athletes must complete their race as well as their final sprint.
  - a. Riders lapped by the leading riders are permitted to stay with the peloton and follow the race. However, under no circumstances may they influence the course of the race, i.e., by latching onto a breakaway, participating in the final sprint, riding at the front of the peloton, or assisting a rider from the same club.

- b. Riders lapped by the leading riders will finish in the same lap as the winner, and their time will be calculated based on their average speed and the number of laps lapped. However, they may not under any circumstances participate in the final sprint. Failure to comply will result in disqualification.

The **Critérium** results will be posted in the parking lot located at the Critérium starting area.

On a circuit of 3 km or less, a compensation lap will be granted up to 5 km from the end of the race for mechanical failure, a flat tire, or a crash, following a verification by a race official. Furthermore, a rider may receive as many compensation laps as there are incidents. A rider delayed due to a crash may only receive a compensation lap if they were the one who crashed.

### **Specific Regulations for Time Trials:**

The bicycle regulations adopted by the International Cycling Union (Articles 1.3.006 to 1.3.025) will apply to all categories and during all races in Quebec. Bicycle inspections will be mandatory for all provincial, interprovincial, national, and international time trial events. **Riders must arrive at least 15 minutes before their start time** at the venue (7 Chemin Saint-Laurent) to have their bicycle inspected and may not leave the area after the final inspection. A rider arriving late will not be permitted to start the race. Racing officials will be available for a preliminary measurement before the start of the first event. However, this does not replace the official pre-start inspection.

If a rider experiences a flat tire or a mechanical failure approved by the chief race official or their substitute during the Time Trial and is unable to finish that event, they will receive a time equivalent to that of the last rider in their category, increased by 1 minute, and will be allowed to start the next event.

The start list will be posted on the tent near the start, as will the results of this event.

No vehicle may follow a rider during the Time Trial.

### **Specific rules for the Climb:**

No vehicle may follow a rider during the climb.

**IT IS PROHIBITED TO PARK A VEHICLE OR DRIVE ON THE CLIMB COURSE between 2:45 PM and 5:00 PM**, under penalty of disqualification for the team found in violation.

A technician (without a vehicle) may be positioned on Chemin Sainte-Croix (main climb) to provide mechanical assistance to riders during the race.

Team vehicles may wait for their athletes at the finish line by traveling via **Chemin Saint-Ours**. It is mandatory to arrive there **before 2:55 PM or after 4:20 PM**. **No vehicle may proceed to the finish line between 2:55 PM and 4:20 PM**, under penalty of disqualification. The return trip must also be made via Chemin Saint-Ours.

After the race, the organization will provide a support convoy to ensure the safety of riders wishing to return to downtown Baie-Saint-Paul by bike via Chemin Sainte-Croix.

If a rider suffers a flat tire or a mechanical failure approved by the chief race official or his substitute during the climb and is unable to finish the race, they will be assigned a time equal to that of the last rider in their category, plus an additional 1 minute, and will be allowed to start the next race.

Each wave of starters will be followed by a marshal's vehicle.

**The organizers will have a sweep vehicle following the last group.**

The results of the Ascension will be posted on the website and at the start of the Routier on Sunday, May 31, at the Saint-Aubin Educational Center.

## Volunteers

It's thanks to our volunteers that the Grands Rendez-Vous Cyclistes de Charlevoix are a success year after year.

Over 100 volunteers contribute a total of nearly 2,550 hours! Their involvement is essential, and we are truly grateful.

If you see them along the course, a smile or a thank you goes a long way.

Would your friends or family like to get involved? Even a few hours can make a real difference. Reach out to us at [info@velocharlevoix.com](mailto:info@velocharlevoix.com) or fill out the form on our website.

## Relevant nearby addresses

### Hospital:

City: Baie-Saint-Paul

Address: 88 Rue Racine, Baie-Saint-Paul, QC G3Z 0K3

Phone: (418) 435-5150

### Accommodations:

For your lodging needs, please visit our website: [www.velocharlevoix.ca/hebergement/](http://www.velocharlevoix.ca/hebergement/)

## A Message from the Presenting Partner

Desjardins is proud to present the Grands Rendez-vous Cyclistes de Charlevoix 2025, a flagship sporting event in the region that appeals to a wide range of participants and aims to encourage healthy lifestyles and pushing one's limits. These values are deeply rooted in our own. We invite everyone **to** come out in large numbers, enjoy the moment, **boost your well-being**, and experience the best the region has to offer!

# J'active mon bien-être



## Partners

### PARTENAIRE PRÉSENTATEUR



### PARTENAIRES INSTITUTIONNELS



### PARTENAIRES RENDEZ-VOUS



## PARTENAIRES SERVICES



## PARTENAIRES MÉDIAS



## PARTENAIRES HÉBERGEURS – AMIS DU PELOTON



## PARTENAIRES AMIS DU PELOTON



Garage P.-H. Ménard

