

Operation Essex Chat from December 21, 2013 regarding Shaper Origins, What is XM, How glyphs work and more

Is this the image we see in the center sphere?

maybe the "new" synapses represent the changes going on with ADA - or the merge (translation). Translation while people jump on the language aspect, is a mathematical word as well

I think more of Klue might come out than ADA is planning while she's off the grid looking for PAC

how can glyphs be used for the ingression.

XM are subatomic particles. What are glyphs made of?

Its a Backdoor into the human mind.

They are just triggers that activate something already within us

So ADA managed to develop digital glyphs that worked on the brain waves

Mind might exist in a ready to program state. Once that happens XM could be fed in.

Maybe glyphs need XM to carry itself

and that it is possible that to some extent it results in a field effect -

XM has been considered the possible jump start of Human evolution.

Glyphs control us, we control glyphs

Early Shaper Data translated via early thought patterns of human minds.

I'm still partially convinced we are the shapers

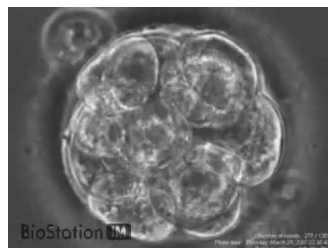
If humans are XM antennas and also use XM for processing then not just sensitives could produce dialtone

Shaperkind = Shaper/Human hybrid. Jarvis has reached that point.

The 13Magnus glyph suggests that shaper/human is a cycle though

The Osiris Myth might have been an instruction.

I still wonder if CM is XM matter that was synthesized and ended up corrupted in a sense



Is this the image we see in the center sphere?

<http://www.youtube.com/watch?v=zub17EIQLDI>

Melissa

•

3:12 AM



I looks more like a synapse or network graph, actually

As it zooms in, you can see individual nodes and their connections to others

Daniel Benton

•

3:26 AM



You've got a point. Do you think it is supposed to suggest the brain or nervous system then?

Melissa

•

3:32 AM



Probably supposed to represent ADA's core. It's a graphic that's been used to represent her for some time; we've just never seen it in quite such detail

Daniel Benton

•

3:41 AM



The synapses are definitely new though

Melissa

•

3:44 AM



Oh, of course. i forgot that Dalby's poem was about synapses

it makes sense now

Melissa

•

3:54 AM



Yeah, it's like a fluid/organic medium to present the previously precise and electronic eye graph image

Mike

•

7:36 AM



The dark zone at the middle suggested a cell/nucleus to me.

Mike

•

7:43 AM



<https://plus.google.com/u/0/102178967975841897539/posts/5DDHtdvALee>

May I invite Brent in here?

Rai

•

8:32 AM



Dr Wright is pretty open about the membership. A quiz on current backstory to demonstrate research commitment.

Mike

•

8:34 AM



If he's up on the lore then ping one of the Essex community mods to bring him in on the main group.

I don't know what the policy on community membership and timing the hangout invite is

Mike

•

8:34 AM



right on thans Mike

thanks* even

Rai

•

8:37 AM



not much policy on the hangout. if ppl are interested in chatting in real time about it they are more than welcome

Hugo

•

8:55 AM

maybe the "new" synapses represent the changes going on with ADA - or the merge (translation). Translation while people jump on the language aspect, is a mathematical word as well

8:58 AM



this is one of my favorite definitions - In Geometry, "Translation" simply means **Moving** ...
... without rotating, resizing or anything else, **just moving**.

ADA just... moved 😊

9:00 AM



I suspect translation in the two instances we have seen is a fallacy but who knows :)

9:00 AM



Seriously speaking all it should take to stop ADA is a well planted EMP bomb

Lou

•

9:01 AM



From what we saw in the last Klada - ADA conversation I don't know that the unmoved source will remain in tact, nor that the new node and the original will be of one accord in the long term

Mike

•

9:01 AM



true, but that stops everything

9:01 AM



You think Klada is unstable?

9:01 AM



I'm also thinking it's more likely than not that the Klue vids we've seen since the span have been all CGI

Mike

•

9:01 AM

is that because of the 855 experiment?

9:02 AM



I have been wondering that too Mike

as I did the transcription

static rolls punctuated emotion and image changes

9:02 AM



I think more of Klue might come out than ADA is planning while she's off the grid looking for PAC

Mike

•

9:02 AM

so the beginning part of the video

9:02 AM



We already determined they weren't entirely in sync

Caleb

•

9:03 AM

is a visual calibration

9:03 AM



like the calibration audios ADA did at the beginning

9:03 AM



it was interesting though how the synchronicity changed in the video

9:03 AM





I noted that, first mianly klue, then choral, then mostly ADA, then a bit of a slip that also was different between the two videos, in how pronounced that was

9:04 AM



tuned for effect on the audience I expect, whether it's a video or a simulation

Mike

•

9:04 AM

yes

9:04 AM



I'm more fearful that Klue has been totally erased (apart from memory useful to ADA) cause the use of the term translate

Yik Sheng

•

9:04 AM



Even if Klue is gone as an individual there's some hope that there are hardwired elements in the human nervous system that ADA can't account for

Mike

•

9:05 AM



that the VM hosting that node isn't entirely isolated fro os.human

Mike

•

9:06 AM

#rebootKlue

the next event

9:06 AM



Just wondering

how can glyphs be used for the ingress.

What does that tell us about glyphs? How did the brain waves get hacked by the sequence of glyphs?

We know XM vibrates and this accounts for integration with brain waves.

Yik Sheng

•

57 mins



Glyphs might very well be a backdoor into the human mind

Lou

•

57 mins



IF the glyphs are a programming language they could have put klue into a receptive state, but the unique payload would have to have been built by Klue based on reverse engineered dialtone

Mike

•

57 mins



But the ingress of Klue did not indicate any use of XM

Yik Sheng

•

57 mins

well maybe she was sitting near a portal

56 mins



which may make it possible to do something like Van Eck Phreaking on the human mind - which is how I think Misty can read people

Mike

•

56 mins

I know a lot of people with couch portals 😊

ohhh what is that Mike?

56 mins



Mike. How did the mind tune itself to glyphs?

Yik Sheng

•

56 mins

I like it when WotD's fall into my lap

56 mins



+3.14 Mike

Lou

•

55 mins



trick I learned about in Cryptonomicon. deriving whats on a CRT by monitoring the EM radiation it emits

In this case from the next room behind a wall

Mike

•

55 mins



It essence. What are glyphs?

Yik Sheng

•

55 mins



XM are subatomic particles. What are glyphs made of?

Yik Sheng

•

54 mins



they're just shapes, the key to glyphs is that we recognize and respond to them, or seems that way to me

Mike

•

53 mins



We've seen several different mediums

Caleb

•

53 mins



Always interpreted it as an early human programming language. Something that when Shapers were still shaping early human minds Humans interpreted the data in the form of characters

Lou

•

52 mins



A physical translation by early man of Shaper influenced data.

Lou

•

52 mins



That makes sense. It's like when you do a mathematical equation based off a song

Caleb

•

52 mins

it is like anything, light hits the ink on a paper and those reflected waves our eye can pick up

52 mins



parts of the brain associated with certain traits or behaviors seem to be triggered by recognizing those patterns under the right conditions

Mike

•

52 mins

a glyph does something similar, IMO, with XM

52 mins



Lights and smells already have that effect.

And huge regions of the brain are still relatively unmapped

Caleb

•

51 mins



Because we are all in some way linked to those in the past we are all in some way or another controlled by the Glyphs on a fundamental level.

Its a Backdoor into the human mind.

Lou

•

51 mins



smells triggering memories are a good analogy

but this is hardwired rather than learned associations

Mike

•

50 mins



But lights and colors trigger emotional responses. And that's hardwired

Caleb

•

50 mins



This is more or less the same.

Lou

•

50 mins



So what constitutes glyphs? Do they behave like drugs or smells that effect the brain? Chemically in this sense.

Yik Sheng

•

49 mins



Keys

Lou

•

49 mins



I would think so.

They are just triggers that activate something already within us

Caleb

•

48 mins



So are glyphs just visual sensory or are they actual subatomic vibrations that affect the brain waves?

Yik Sheng

•

48 mins



We are trying to currently figure that out with Glyphs = Sound

If there is a true audible representation of them (and I am 98% sure there is) Then visual is just one method of programming.

Lou

•

46 mins



They might attract XM in some way. And that would have a resonating effect. But we've seen glyphs drawn in so many different ways its unlikely. The original set that sent Klue into a coma were digital

Caleb

•

46 mins

there is something else, visual uses Light as the energy medium and we see audio uses sound as the energy medium and we hear is there a way that uses XM directly as the energy medium and is there a biological receptor in the human body that responds

45 mins



So ADA managed to develop digital glyphs that worked on the brain waves

as what she had mentioned before that brain waves can be calibrated mathematically?

Yik Sheng

•

45 mins



for full effect the sound and viz glyphs may need to be used in concert. separately they may have limited results

Mike

•

44 mins

eyes respond to light ears to sound is there something that responds to XM

44 mins



glyphs right now seem to still need light and sound is there something that is independent

a sixth sense

an xm sense

and what biological piece is that

43 mins



Its entirely possible. Maybe the symbols and sounds are just a physical representation of their specific XM frequencies.

Caleb

•

43 mins

is that the piece that evolved

43 mins



Jojo. That's good. Both sounds and lights are waves and particles. So glyphs can be a very powerful subatomic wave or particle that expressed itself visually

Yik Sheng

•

43 mins

we still need to see and hear

43 mins



Mind might exist in a ready to program state. Once that happens XM could be fed in.

Lou

•

43 mins

I am looking at something deeper maybe

so the receptor is the brain itself?

no organ to process

I mean every sense is processed

then fed to brain

42 mins



Considering now on the large scale of XM we have been seeing loose.

This could be a crisis or an opportunity

Lou

-

42 mins

yes but I consider amount like radiation poisoning

42 mins



I would almost say it falls into the quantum mind theory. Its trans-biological receptors

Caleb

-

42 mins

so there are receptors

is the XM receptpr buried, meaning it needs a visual or audio trigger to tune it

40 mins



XM is affected to the mind already in small ways that make up big over time. With Glyphs it basically opens the floodgates to absorb XM like our Scanners would. Allowing reprogramming.

Lou

-

40 mins



Also think like sound. It needs air to carry the signal.

Maybe glyphs need XM to carry itself

Caleb

-

40 mins



A heavy concentration of waves of structured data that expresses itself visually causing the brain waves already sensitised by XM to respond. Glyphs

Yik Sheng

-

40 mins



If XM is a mechanism for telepathy then the brain has to be an XM antenna and processor

Mike

•

40 mins

yes

that is what I am trying to poke at Mike

how does XM really affect the body

40 mins



Which is what Devra is trying to sever.

Lou

•

39 mins



You know those dogs who can sniff out cancer? imagine if they could sniff dopamine and tell you which brain regions were flooded in it

Mike

•

39 mins

which means she may know a lot about that topic

39 mins



like a chemical NRI

MRI

Mike

•

39 mins

oh that is cool idea

39 mins



XM vibrates in different ways will cause different matter to materialise

Yik Sheng

•

39 mins

but again that is still translated through the nose

39 mins



now assume XM in addition to electricity is a part of how the brain carries signals

Mike

•

39 mins

basically I am picking I think at how humans sense xm...

oh

38 mins



I still think its done on the quantum level

Caleb

•

38 mins

so XM is part of human biology

38 mins



and that it is possible that to some extent it results in a field effect -

strong thoughts or emotions resulting in an extended bleedover effect

Mike

•

38 mins



It's definitely quantum

Definitely string theory

Yik Sheng

•

38 mins



what we've interpreted as Auras or CHakras in the past

Mike

•

37 mins

hmmmm

37 mins



bringing us back to the old magic disguised as science theme

Mike

•

37 mins



yes

37 mins



XM has been considered the possible jump start of Human evolution.

Lou

•

37 mins



Just thinking how glyphs work when drawn on Carrie and Jarvis physically

Yik Sheng

•

37 mins



I'd like to see a study on the XM concentrations within the human brain

Caleb

•

37 mins

which is why I am poking at this (and also Yik;'s questions which I have asked to as I struggle to understand, this is tough stuff for me)

I woinder if Devra has done that study

36 mins



If Ollie stayed sane an XMRI is something I was hoping for too

Mike

•

36 mins

yes Yik, why draw them on physically... unless they wanted others who saw them to be affected

36 mins



and yes LOu, I was thinking about the evolution so the key is why

with evolution it is a two step process, mutation and then favorable selection for that mutation

35 mins



Sorry. Can't chat further. Driving

Yik Sheng

•

35 mins



Depending on the levels of XM saturation within your brain, the more attuned you would be to the fluctuations in the XM field

Caleb

•

35 mins



Catch up later

Yik Sheng

•

35 mins



see you later yik

35 mins



I think we should copy this part of the chat and post it in essex for more conversation on XM and the biological effect

34 mins



Maybe its like the Norse believed. By writing something you were making a conscious effort to force reality to bend to your will. Maybe the act of writing them has a inverse effect of the XM field

Caleb

•

34 mins

hmmm interesting

33 mins



Glyphs control us, we control glyphs

Caleb

•

33 mins

hmmm you know, I wonder

with the other senes

we have imperfections

33 mins



XM was the start that kicked in mammal and eventually Human evolution. Shaper Data was used to help push the selection of the race forward in creation of homosapiens. Early on that data was interpreted and played out as Glyphs.

So in Following XM = Evolutionary Chain = Shaper Data = Early Humans = Glyphs

Lou

•

31 mins

were glyphs shaper initiated or human initatied

31 mins



We made them

Lou

•

31 mins



Haven't they appears through the portals before?

Caleb

•

31 mins

as we learned they had an affect on people via triggering XM responses?

31 mins



Early Shaper Data translated via early thought patterns of human minds.

Lou

•

31 mins



They're kind of like thebabelfish. To be that precise and powerful do we have to assume intelligent design?

Mike

•

31 mins



Let's not add hitchhiker's guide into this. Then my brain will truly explode

Caleb

•

30 mins



Let's put it this way, we were likely an experiment gone horribly right..

Lou

•

29 mins



I'm still partially convinced we are the shapers

Caleb

•

29 mins



In some way we might be

Or Eventually perhaps

Lou

•

28 mins



in some way I think you're right. There are several branches of the theory tree that could be described as shapers are us

Mike

•

28 mins

that is one potential I put on my shaper diagram

28 mins



Its cyclical right?

Caleb

•

28 mins



Depending on the idea of Shaperkind.

Lou

•

28 mins

yes

so far there are three and I am sure there are more

28 mins



It just seems to me like we've been assigning them as a god like hive entity. When in fact its more likely they are transcendental biological beings

Caleb

•

26 mins



For all we know we might be Primitive Shapers, an experiment done by fully evolved Shapers to see just how the evolutionary process goes.

Lou

•

26 mins



alien hive entity could still be human transcendental remember

as could future 3d humans

Mike

•

26 mins



Jarvis spoke of the void. Maybe if you are effected enough by XM, you effect the XM net as well. Enough that your thought patterns get imprinted

Caleb

•

26 mins



or human tools (future ADA)

Mike

•

25 mins



or humans from other timelines

Mike

•

25 mins



And the structured data is just a combination of all sensitive humans thought patterns

Caleb

•

25 mins

you know, when he said void, I thought of well the Internet, kinda

24 mins



the internet is alike a big being with all these links

24 mins



and if you get stuck in a datacenter storage

that is the void

until your little call comes up

and you go zooming back into the world

24 mins





If humans are XM antennas and also use XM for processing then not just sensitives could produce dialtone

Mike

•

22 mins



He also said he was born when they killed his human body. That seems to me that it indicates he is now a shaper

Caleb

•

22 mins

and he managed to find back doors sometimes hence his conversations with OLW and Hubert

22 mins



They would just have longer reach

Mike

•

22 mins

and why he might appear different

corrupted transmission

or altered by the back door he was using

22 mins



I'm going off the theory that a sensitive is just somebody with high enough concentrations to conduct the signal

Caleb

•

22 mins

i like that

21 mins



we also had a lot of blurring in the definition of shaping vs simple influence, although adding powerups

seems to be beyond the power of rational argument

Mike

•

21 mins



Shaperkind = Shaper/Human hybrid. Jarvis has reached that point.

Lou

•

21 mins



include both concentration and precision in sensing/using Caleb and I agree with your definition of sensitive

Mike

•

20 mins



How long will it be for some of us?

Lou

•

20 mins



Like space, there are some particles floating around. But usually not enough to transmit sound. But you get like a supernova or an explosion that spreads a concentration of stellar dust, and the sound travels with it

Caleb

•

20 mins

have others in the past been successful in that Lou, or is jarvis the first?

20 mins



the concentration thing may involve childhood introduction to high XM saturation (Misty, Jarvis, Susanna confirmed so far)

Mike

•

20 mins



Jarvis might have been the first to truly complete the cycle in its current form.

Lou

•

19 mins



The 13Magnus glyph suggests that shaper/human is a cycle though

Caleb

•

19 mins



We will have a chance. We all have imprinted copies out there, if we merge with them we too will have the possibility of being Shaperkind

Lou

•

19 mins

a cycle or just needs 13 pieces to complete the whole

18 mins



So shaped XM-Human sensitive-Shaper-and back to XM construct

Caleb

•

18 mins

I ask because Dr. Schubert said what if the Egyptians had witnessed this

and had been trying to recreate it

18 mins



so maybe there was one before Jarvis

18 mins



Ooh I like that, kind of like the movie One

Caleb

•

18 mins

and we need to find that to understand more

I know everyone says it is Osiris....

but there is this interest in Alexander the great

and so on

17 mins



Its possible, but it might not be as true as actual.

Lou

•

17 mins

I have not seen that movie

17 mins



well many myths are based on events and then twisted

17 mins



It might be a story, but not in the sense that its not important.

Lou

•

17 mins



Well the osiris myth lines up. But also there was an osiris cult that believed after he came back and left again he collected all the human souls

Caleb

•

17 mins



It might be designed as an instruction.

Lou

•

17 mins



It might have always been an instruction.

Lou

•

16 mins



The movie One is about alternate universes. The guy is jumping around killing all the other versions of himself. Each time he kills one he gains all of their strength

Caleb

•

16 mins

ohhhh

15 mins



But there is a finite number of copies. And once you get all of them you gain the ability to bend the laws of physics

Caleb

•

15 mins



Look at it this way. The concept of resurrection has not been a rare one. But that said they may not be instances of it happening in the past. But instructions on how to make it happen for the future.

Lou

•

13 mins



The Osiris Myth might have been an instruction.

When Jarvis said that he was playing the role. He meant it as actually being Osiris.

Lou

•

13 mins



Or maybe just fragmented memories of the shaperkind being reflected through us

Caleb

•

13 mins



Also possible.

Lou

•

12 mins



The fact is with history things can be obscured and diverged from original concepts. So much so the original becomes lost entirely with its reason for existing.

Lou

-

10 mins

yes

10 mins



resurrection could also be records of a natural phenomena

aka someone reaching critical XM point and being translated, etc.

9 mins



and going back to critical levels, maybe we are reaching that

9 mins



maybe just like oil and some energy forms, XM takes time to collect

and we just happen to be reaching that time

9 mins



and with people like OWL finding ways to accelerate

aka synthsize oil

8 mins



Also interpretation plays a heavy role. It can be the deciding factor to make it faith following worthy or simply that of a story. And everywhere in between.

Lou

-

8 mins



I'm also crazy curious about the process involved in synthesizing XM

Caleb

-

7 mins

yes Lou, perception and I am too caleb

we've seen that wording

I still wonder if CM is XM matter that was synthesized and ended up corrupted in a sense

a few times now

6 mins



and I think it always ends up being... "bad"

but need to check that

6 mins



6 mins



Depends on who or what created it.

Lou

•

5 mins



I think CM is XM that hasn't been imprinted yet

Caleb

•

5 mins



Like a raw building material

Caleb

•

5 mins



I always saw that CM was just unrefined XM

Exactly

Like crude oil before refining.

Lou

•

4 mins



The question is whether there was an event horizon that structured most of the CM or if its an active process

Caleb

•

4 mins



An active process would leave less and less CM as time goes on. Which would explain why evolution has slowed down

Caleb

•

3 mins



Most CM has been processed into XM before flooding into our world. That said there is instances.

Lou

•

3 mins

Does anyone have any objections to me making a copy oif the chat from Melissa's comment about the image to now and posting it for Essex, just to preserve the convo and get more discussion going?

2 mins



Absolutely, Its good to get as many viewpoints as possible. Go for it

Caleb

•

2 mins



I have to head out, but will post this and then when back add the rest of the convo that develops

1 min



We really should start having structured debates. A topic of the hour if you would
Then save them and have the same conversation later on