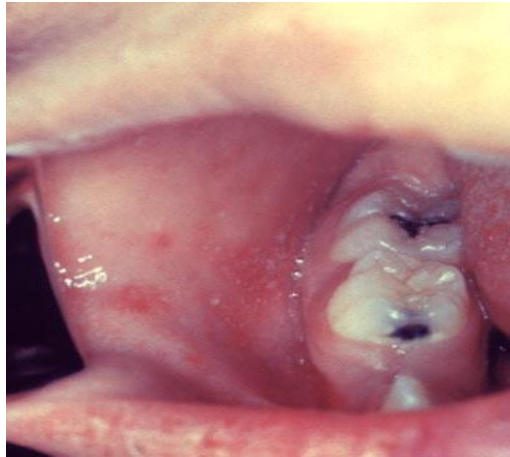


Measles is an acute viral respiratory illness.

Symptoms

- Running nose
- Cough
- Conjunctivitis : Red and watery eyes
- Koplik spots: Small white spots inside cheeks



Koplik spots

- Maculopapular rashes begins 7-18 days after exposure. Usually on the face and upper neck. It spreads over the body about 3 days, eventually to hands and feet. It usually last 5-6 days before fading.
- Small raised bumps may appear on the top of flat red spots. Spots may become joined together as they spread head to rest of the body.



Transmission

- Most contagious disease (90%).
- Spread by contact with infected nasal or throat secretions.
- It can be transmitted by an infected person four days prior to onset of the rash to four days after appearance of rash.

Diagnosis

- IgM Measles antibody
- RT-PCR

Treatment

- Supportive

Complication

- Blindness
- Sub acute sclerosing Panencephalitis
- Severe diarrhea and related dehydration
- Pneumonia

Prevention

- MMR vaccine at 9 or 15 months & second dose at 15-18 months.

Reference

- <https://www.cdc.gov/measles/hcp/index.html#isolation>