



CSC Meeting 10.10.24 1:00 pm

Agenda & Notes

Lion Love

•

24.25 School-Wide Priorities

- Support and challenge our students to provide high-quality grade level writing responses in all contents (Pear deck, exit tickets, formal assignments, Seesaw etc.)
- Support and challenge our students to reach grade level expectations and beyond for all subjects (Goal: 6% increase in Literacy Status & 5% increase in Math Status)

Meeting Outcomes & Agenda

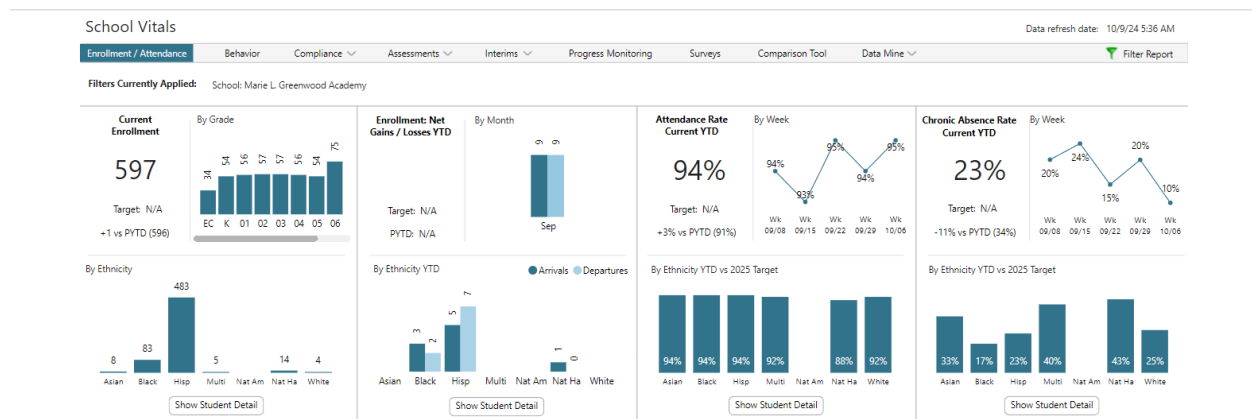
- Introduce Members Of The CSC
- Classroom Numbers
- Additions This School Year (Positions & Impact)
- Review School Rating Information & Enrollment Trends

Enrollment

24/25 SY- 597

23/24 SY - 588

22/23 SY - 592



Classroom Numbers

ECES - 16

ECEE - 18

KinderS - 25

KinderE - 29

1stS - 29

1stE - 27



CSC Meeting 10.10.24

2ndS - 28

2ndE - 29

3rdS - 28

3rdE - 29

4thS - 29

4thE - 27

5thS - 25

5thE - 29

6thS - 29

6thE - 66 (Split in two classes)

7th - 83 - (Split Into Three Classes)

8th - 71 - (Split Into Three Classes)

Additions This School Year (Positions & Impact)

- 0.6 math intervention (8th)
- City Year (4th-8th)
 - Tutoring
 - Lunch/recess duty
 - Attendance supports
 - 1:1/Small group student support

School Rating Information


3647: Marie L. Greenwood Academy | 0880: Denver County 1

Grade Levels: EM - (1 Year)

Plan Type		Official Rating based on SINGLE-YEAR SPF Report	
Performance Plan		58.9/100 Points Earned	
<p>The performance framework evaluates district and school performance on Academic Achievement, Academic Growth, and Postsecondary & Workforce Readiness indicators. The percentage of points earned across all indicators determines the final accreditation rating for a district or the final plan type for a school, which is displayed above. The cut points for final ratings established by the State Board of Education are shown at the right of this page. Failure to meet test participation, safety, and finance assurances may result in a rating being lowered by one level. Refer to the scoring guide near the end of this report for more details on how ratings are determined.</p>		<div><div></div><div>58.9%</div></div>	
		<p>School plan types are based on the total percentage of points earned.</p> <p><i>Performance Plan:</i> 53.0% - 100%</p>	
Indicator Rating Totals			
Performance Indicator	Percent of Points Earned	Points Earned/ Eligible	Rating
Academic Achievement	41.1%	16.4/40	Approaching
Academic Growth	70.8%	42.5/60	Meets



CSC Meeting 10.10.24

 <p>MARIE L. GREENWOOD rated GREEN on the Colorado Department of Education School Performance Framework!</p>	PERFORMANCE
	IMPROVEMENT
	PRIORITY IMPROVEMENT
	TURNAROUND