

IPW Base Document to place at a Google Drive open to all:

Indian Peaks Wilderness is a popular destination for hiking, fishing, backpacking, camping, snowshoeing, backcountry skiing and more. Overnight Permits, Day Use Permits and Parking Reservations are required depending on the season, group size, and location.

The Wilderness is divided into 17 backcountry zones, each with a permit quota to limit

adverse impacts due to repeated use. All

permits available at [Recreation.gov](https://www.recreation.gov).

[Indian Peaks Wilderness information starts at the USFS webpage](https://www.usfs.gov/indian-peaks-wilderness).

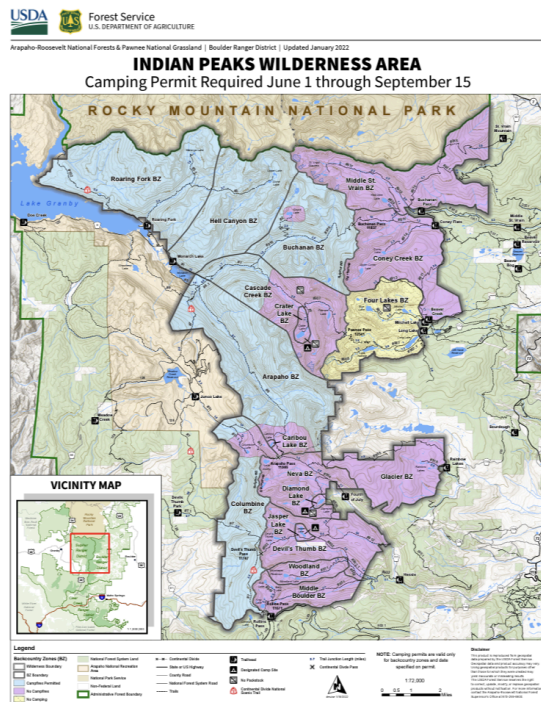
[Parking and entry Information is here](#).

[From June 1-September 15, groups between 8 -12 require a group permit and assignment to a particular backcountry zone](#).

Bear Canisters are required in certain backcountry zones and trailheads.

[Trail Conditions are available here](#).

[Climbing information available here](#).



Each IPW R/P [usually a trailhead] will contain this language pointing to the base document:

Indian Peaks Wilderness restricts usage, parking, and entry depending on season and trailhead location. Go here for more information [link].