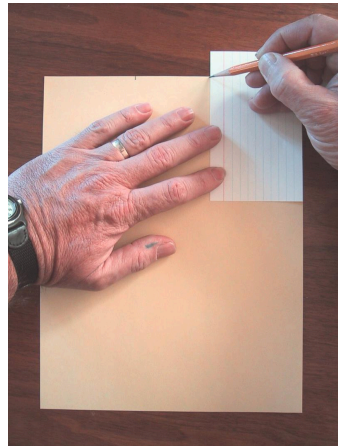
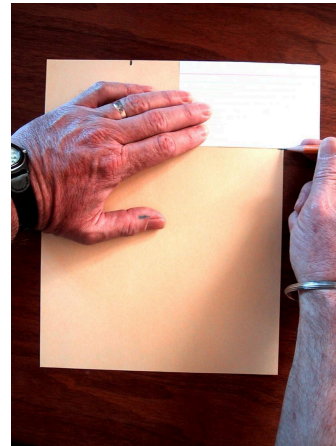




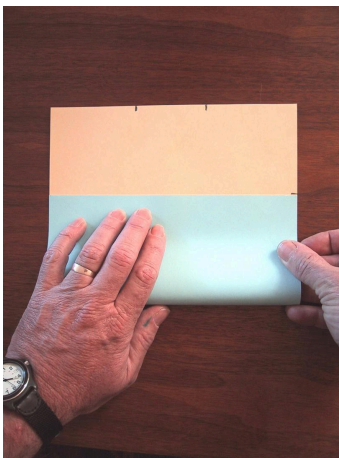
1. Make the first mark 3" in from the left edge using an index card as template.



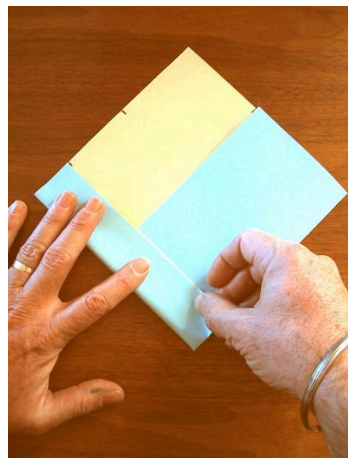
2. Make a second mark 3" in from the right edge.



3. Make a mark 3" down from the top edge of the paper.



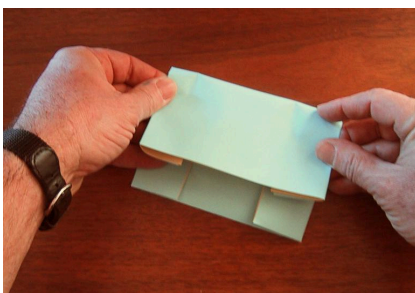
4. Fold bottom up to mark on side of sheet.



5. Fold left edge in to mark 3" in from left top of sheet.



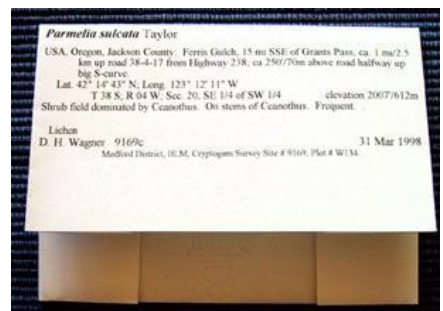
6. Fold right edge in to mark 3" in from right top of sheet.



7. Fold top down snugly over the bottom fold; press the creases neatly.



8. The completed packet provides a secure enclosure for the specimen, files upright, and is easy to open when needed.



9. A sample packet with label printed directly on the packet paper, ready for insertion into any herbarium.