

ALBINOS

Portfolio and Commission Examples

All art pieces in this document are drawn by me (Albinos) and protected under copyright.

All rights reserved. My work may not be reproduced, copied, edited, published, transmitted or uploaded in any way without my written permission. Any other rules about redistribution of rightfully commissioned artwork are outlined in my personal [Commission Terms and Conditions of Service](#).

— Contact information —

Discord - albinos_art

E-mail - aibinos.arts@gmail.com

Character credits:

One or more characters within these examples belong to the following people:

Myself (Albinos)

Helidara on Discord

HuskiesCanFly on Toyhouse

RiptideTheSpaniel on deviantART

MiniMagpiexx on deviantART

Dirkpitt01 on deviantART

BurningSands on Toyhouse

PntherArt on deviantART

Itachislilgirl on deviantART

Nekoness on Toyhouse

MykalaBlue on deviantART

Eternity9 on deviantART

f1e4bag on Toyhouse

Amary-liss on deviantART

madohomurat on Bluesky

kkisadorabubble on Toyhouse

SpaceKeet on Tumblr

EnderTheRiolu on ArtFight

ArtisiaCons on BlueSky

If you are the owner of these characters and wish for me to remove them from this portfolio, please reach out to me via the contact information above and I will take your character's image(s) down as soon as possible.

SKETCHES / COLORED SKETCHES

a drawing of your character(s), complete with sketchy lining and a single flat color fill (for sketch) OR full color (for colored sketch). Some lines may be thinner or thicker than others, and stray pen strokes could be present.



FLAT COLOR

a drawing of your character(s), complete with neater, hand-drawn lining and flat coloring.



CELL SHADED

a drawing of your character(s), complete with neater, hand-drawn lining, coloring and a solid, cell-shading style. Highlights may be included in the cell shading for extra effect, as well as light shines on areas such as the eyes, nails, jewelry, etc.



FULL SHADED

a drawing of your character(s), complete with neater, hand-drawn lining, coloring and a soft shading/lighting style. Includes more intricate fur textures, hair shine and overall lighting of areas to help your character pop!



BACKGROUND OPTIONS - PART 1

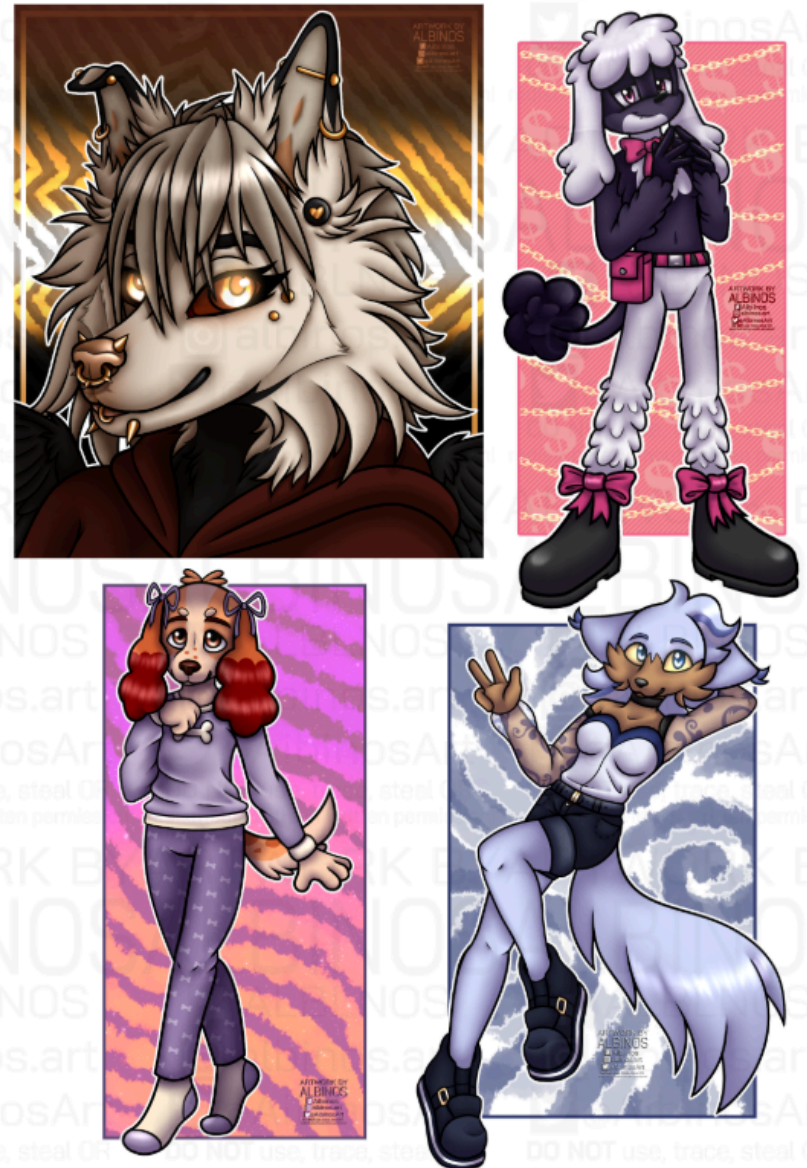
'BUBBLY' BG

A background created using large, bubble-like pen strokes and filled with simple patterns, gradients and colors that suit your character(s), usually with no or minimal shading.



ABSTRACT BG

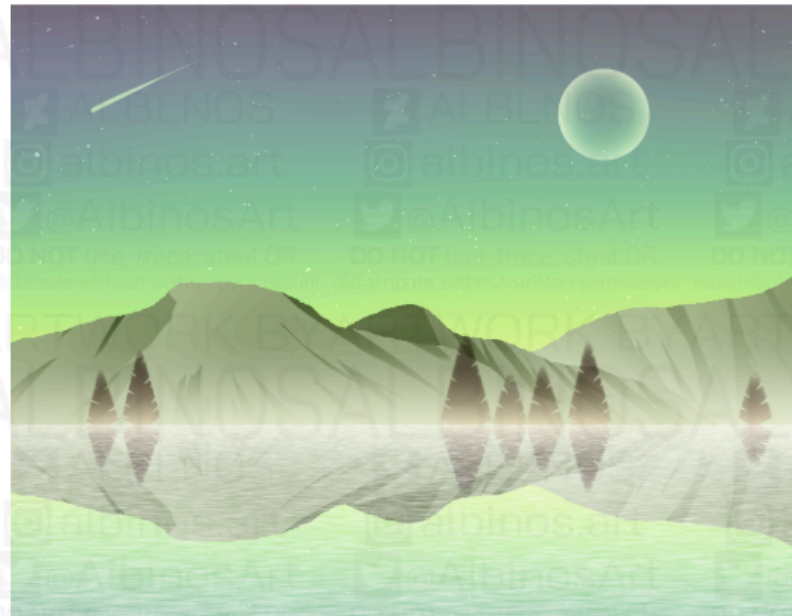
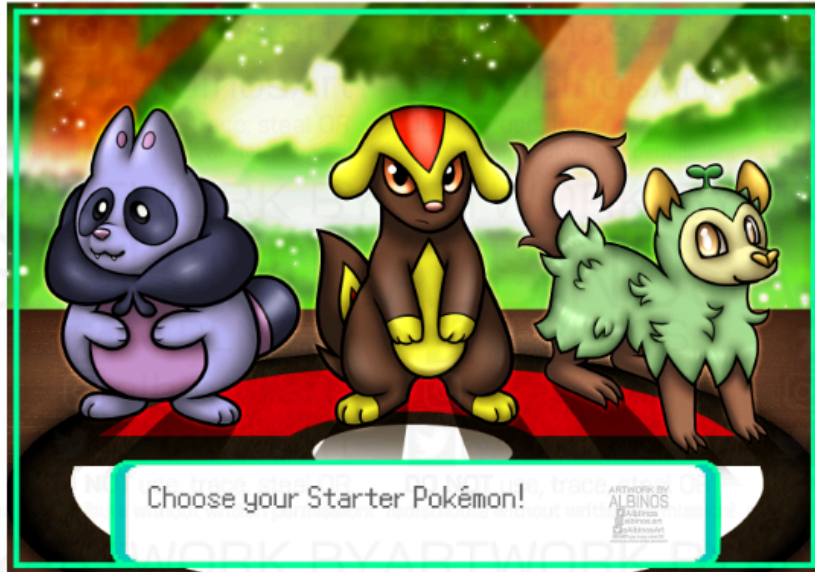
A simple type of background that could be anything from swirls, splatters, paint strokes, stripes and MORE, while also featuring small props such as sun rays, stars, leaves, etc!



BACKGROUND OPTIONS - PART 2

SIMPLE BG

an environmental background with more simplified features rather than realistic detail, with soft or bare minimum shading, focus blurs and elements created in modest manners. A background & fore-ground may be present, as well as props for a close-range scene.



COMPLEX BG

A painterly complex background with heaps more realistic shading & intricate details, including textures, light, shadows, and pen strokes for grass strands, foliage, etc. I will basically go all out to make a lively, detailed and realistic scene for your character(s)!

