

MA Approved World Language Assessment Instruments and Minimum Required Scores or Levels to the World Language Criteria for the State Seal of Biliteracy

Updated 1/31/2023

What Assessments Are Available?

Complete-Domain Assessments

When a Complete-domain assessment is available for the desired language, districts must choose Complete-domain assessments. Exceptions may be made for individual students who require accommodations that the Complete-domain assessments may be unable to provide. In such cases, districts should first contact the Complete-domain assessment vendor to determine if they can make accommodations for the student. If not, the student may require an Alternative assessment.

Partial-Domain Assessments

If a student wishes to demonstrate proficiency in a language for which no Complete-domain assessment is available, districts may consult the list of Partial-domain assessments. Partial-domain assessments are to be used only when Complete-domain assessments are not available for the desired language.

Alternative Assessments

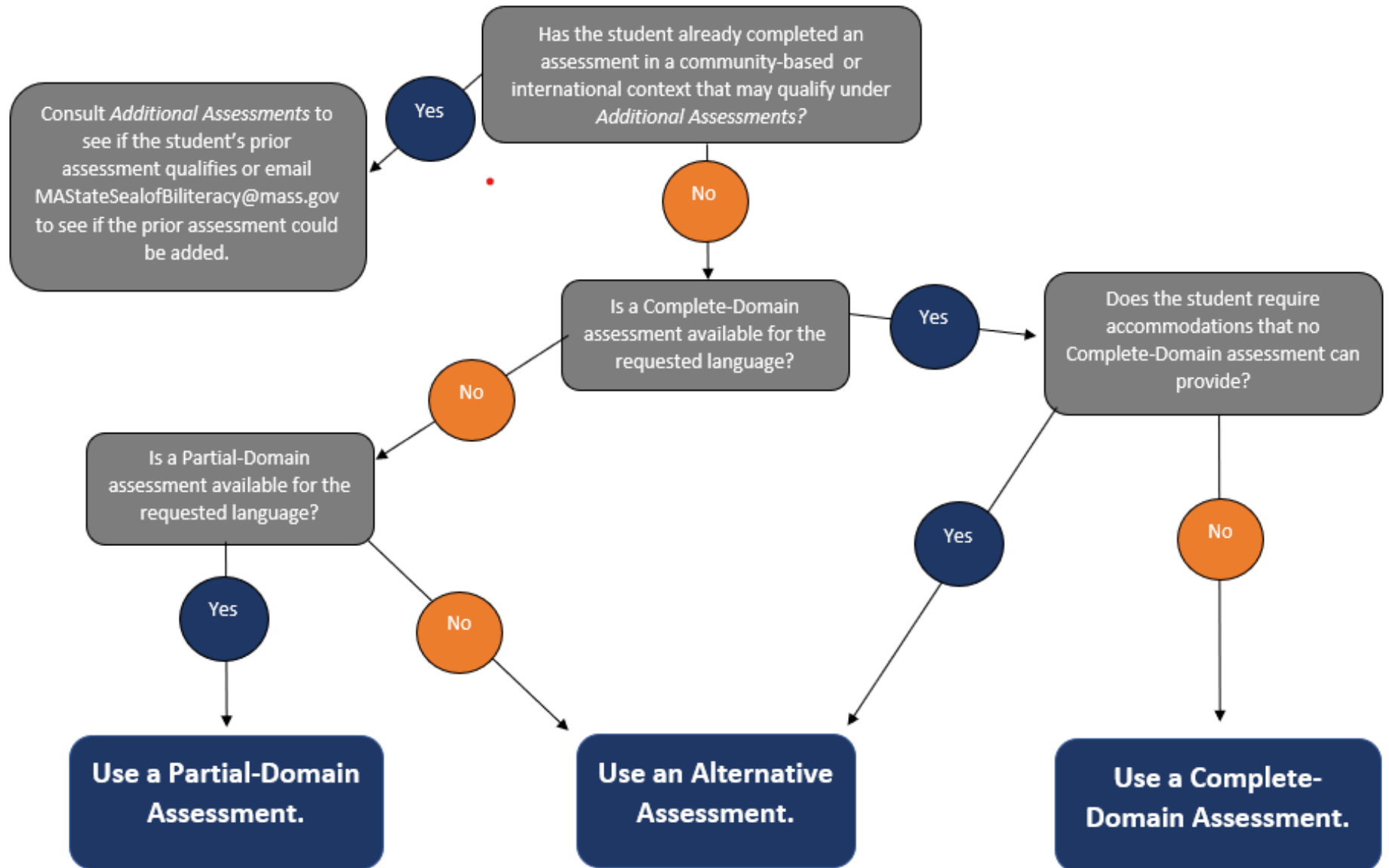
Districts should use Alternative assessments only in the following circumstances:

- The Department does not approve any Complete or Partial-domain assessments for the language in question, or
- The district determines that a student's disability precludes them from fully accessing Complete or Partial-domain assessments.

Additional Assessments

Students who have already taken a language test in international or community-based language programs may already have satisfied the world language criteria for the State Seal of Biliteracy. While districts are not asked or advised to seek out testing companies under this category, students who already have qualifying scores from these approved assessments do not need to complete further world language assessment.

Which Type of Assessment Should I Choose?



Complete-Domain Assessments

Complete-domain assessments are nationally recognized and readily available assessments that fully satisfy the criteria for the State Seal of Biliteracy. Districts should use Complete-domain assessments for all languages unless the needed language does not have a corresponding Complete-domain assessment. If students require accommodations that Complete-domain assessments cannot provide, please see Alternative Assessments.

World Language Assessments Administered to Students in High School	Source	Language(s)	Domain(s) Assessed	MA State Seal of Biliteracy – Minimum score or level to qualify:	MA State Seal of Biliteracy with Distinction – Minimum score or level to qualify:
AAPPL (ACTFL Assessment of Performance toward Proficiency in Languages) Measure	Language Testing International	Arabic French German Italian Japanese Korean Mandarin Chinese Portuguese Russian Spanish	Listening Speaking Reading Writing	I-5 in all domains (Form B)	A-1 in all domains (Form B)
ALIRA (ACTFL Latin Interpretive Reading Assessment)	Language Testing International	Latin	Reading	I5 in all domains	A1 in all domains
AJA Tamil Language Proficiency Assessment	AJA Assessment	Tamil	Listening Speaking Reading Writing	Equivalent ACTFL Score of Intermediate High in all domains	Equivalent ACTFL Score of Advanced Low in all domains
AP®(Advanced Placement)¹ Language and Culture exam	College Board	Chinese French German Italian Japanese Spanish	Listening Speaking Reading Writing	4	5

¹ In response to the COVID-19 crisis in 2020, the AP Language and Culture exams for modern languages reformatted their assessments to facilitate in-home testing. These adjusted exams did **not** meet the Department’s criteria for World Language Assessments. The 2020 AP exams for Chinese, French, German, Italian, Japanese, and Spanish may **not** count toward the Massachusetts Seal of Biliteracy. The status of the 2021 AP exams remains unclear. The Department advises districts relying on the 2021 AP Language and Culture exams for Chinese, French, German, Italian, Japanese, and Spanish to prepare contingency plans.

World Language Assessments Administered to Students in High School	Source	Language(s)	Domain(s) Assessed	MA State Seal of Biliteracy – Minimum score or level to qualify:	MA State Seal of Biliteracy with Distinction – Minimum score or level to qualify:
AP[®] (Advanced Placement) Latin	College Board	Latin	Reading	4	5
ASLFAI American Sign Language Functional Ability Interview	ASLFAI	American Sign Language (ASL)	Holistic	Emerging High	Accelerating Low
ASLPI American Sign Language Proficiency Interview	Gallaudet University	American Sign Language (ASL)	Holistic	3+	4
IB International Baccalaureate	IB	Chinese French German Classical Greek Latin Spanish	Listening Speaking Reading Writing	5 on a Higher-Level exam 6 on a Standard-Level exam	6 on a Higher-Level exam
NEWL National Examinations in World Languages	American Councils for International Education	Arabic Korean Portuguese Russian	Listening Speaking Reading Writing	4	5
SLPI Sign Language Proficiency Interview	Rochester Institute of Technology	American Sign Language (ASL)	Signing Attending (Listening)	Intermediate Plus	Advanced

World Language Assessments Administered to Students in High School	Source	Language(s)	Domain(s) Assessed	MA State Seal of Biliteracy – Minimum score or level to qualify:	MA State Seal of Biliteracy with Distinction – Minimum score or level to qualify:
STAMP™ (Standards-based Measurement of Proficiency 4S)	Avant Assessment	Arabic (bilingual) Arabic (monolingual) French German Hebrew Hindi Italian Japanese Korean Latin Mandarin Polish Portuguese (Brazilian) Russian Spanish (bilingual) Spanish (monolingual)	Listening Speaking Reading Writing	Level 6 (Intermediate High) in all domains	Level 7 (Advanced Low) in all domains

Partial-Domain Assessments

Partial-domain assessments are nationally recognized assessments that measure proficiency in speaking and writing. They may be used to demonstrate the levels of proficiency necessary to earn the Seal of Biliteracy until a Complete-domain assessment is approved and listed above. Districts should not use Partial-domain assessments for languages for which Complete-domain assessments are available.

Assessment	Source	Domains	Minimum Score	
			Seal of Biliteracy	Seal with Distinction
ALTA	ALTA Language Testing	Speaking Writing	8	9
OPI/WPT	Language Testing International	Speaking Writing	Intermediate High in each domain	Advanced Low in each domain
Stamp WS	Avant/CASLS	Speaking Writing	6 in each domain	7 in each domain

Language	ALTA	OPI/WPT	Stamp WS
Afrikaans	✓		
Albanian	✓	✓	
Amharic	✓	✓	✓
Arabic (various dialects)	✓		
Armenian	✓		✓
Azerbaijani	✓		
Baluchi (Western)	✓		
Bambara	✓		
Bengali/Bangla	✓	✓	
Bosnian	✓		
Bosnian/Croatian	✓	✓	
Burmese	✓		
Cabo Verdean	✓		✓
Cambodian	✓		
Chin (Hakha)	✓		✓
Chinese (Cantonese)	✓	✓	
Chuukese	✓		✓
Croatian	✓		
Czech	✓		✓
Danish	✓	✓	
Dari	✓	✓	
Dutch	✓	✓	
Ewe	✓	✓	
Fante (Akan)	✓		
Farsi (Persian)	✓	✓	
Finnish	✓		
French Canadian	✓		
Ga	✓		
Georgian	✓		

Language	ALTA	OPI/WPT	Stamp WS
Greek (Modern)	✓	✓	
Gujarati	✓	✓	
Haitian Creole	✓	✓	✓
Hausa	✓		
Hawaiian ('Ōlelo Hawai'i)			✓
Hmong	✓		✓
Hungarian	✓		
Ibo	✓		
Ilocano	✓		✓
Indonesian	✓		
Jamaican Patois	✓		
Kannada			✓
Karenni	✓		
Kazakh	✓		
Kinyarwanda	✓		
Kurdish	✓		
Laotian	✓		
Latvian	✓		
Lithuanian	✓		
Macedonian	✓		
Malay	✓		
Malayalam	✓	✓	
Marathi			✓
Marshallese			✓
Mongolian	✓		
Navajo	✓		
Nepali	✓		
Norwegian	✓		
Oromo	✓		
Pashto	✓	✓	
Pashto (Pakistani)	✓		
Punjabi	✓		
Romanian	✓		
Samoan	✓		✓
Serbian	✓		
Sinhala	✓		
Slovak	✓		
Slovenian	✓		
Somali	✓		✓
Swahili (3 skills)			✓
Swedish	✓	✓	
Tagalog	✓	✓	✓
Tajik	✓		
Telugu	✓		✓
Tibetan	✓		
Tigrinya	✓		
Turkish	✓	✓	✓
Turkmen	✓		

Language	ALTA	OPI/WPT	Stamp WS
Twi (Akan)	✓		
Ukrainian	✓	✓	
Urdu	✓	✓	✓
Uzbek	✓		
Vietnamese	✓	✓	✓
Wolof	✓		
Yoruba (3 skills)			✓
Yup'ik			✓
Zomi			✓

Alternative Assessments

Districts should use Alternative assessments only in the following circumstances:

- The Department does not approve any complete-domain or partial-domain assessments for the language in question, or
- The district determines that a student's disability precludes them from fully accessing approved complete-domain or partial-domain assessments.

The following vendors are approved by the Department to provide personalized language assessments for students in languages that have no approved complete-domain or partial-domain assessments and for students who require accommodations that approved complete-domain and partial-domain assessments may not be able to provide. Contact the vendors below for more information. Vendors are listed alphabetically.

Approved Vendor/Website	Phone	Email
Idioma Education & Consulting	978-494-6430	info@idiomaconsulting.com
Lexikeet	844-374-6767	info@lexikeet.com

Additional Assessments*

Language	Assessment	Assessment Provider	Domains	Minimum Score: Seal of Biliteracy	Minimum Score: Seal of Biliteracy with Distinction
Bulgarian	Bulgarian Standardized Test	Sofia University	Listening Speaking Reading Writing	B1	B1+
French	DALF/DELF/ DELF Scolaire	French Ministry of Education	Listening Speaking Reading Writing	B1	B2 (DELF, DELF scolaire) C1 (DALF) C2 (DALF)
German	Deutsches Sprachdiplom Stufe (I or II)	ZfA – Central Agency for Schools Abroad (Germany)	Listening Speaking Reading Writing	B1 (DSD I)	B2 (DSD II)
Greek (Modern)	Certificate of Attainment in Greek	Center for the Greek Language	Listening Speaking Reading Writing	B1	B1+
Greek (Modern)	Ellinomatheia	Hellenic Language Center (Greece)	Listening Speaking Reading Writing	B1	B2
Lithuanian	Lithuanian Language Assessment	Boston Lithuanian School	Listening Speaking Reading Writing	Pass	
Swedish	Tisus	Department of Swedish Language and Multilingualism	Reading Speaking Writing	Pass (C1)	Department of Swedish Language and Multilingualism

*If you don't see your student's prior language assessment on the list, contact MAStateSealofBiliteracy@mass.gov to inquire.