

Hathkanangle Railway Station

The **Amrit Bharat Station Scheme** has been launched for development of Railway stations on Indian Railways. The scheme envisages development of stations on a continuous basis with a long-term approach.

It involves preparation of Master Plans and their implementation in phases to improve the amenities at the stations like improvement of station access, circulating areas, waiting halls, toilets, lift/escalators as necessary, cleanliness, free Wi-Fi, kiosks for local products through schemes like 'One Station One Product', better passenger information systems, Executive lounges, nominated spaces for business meeting, landscaping, etc keeping in view the necessity at each station. The scheme also envisages improvement of building, integrating the station with both sides of the city, multi-modal integration, amenities for Divyangjans, sustainable and environment friendly solutions, provision of Ballastless tracks, phasing and feasibility and creation of city centers at the station in the long term.

Under the scheme, **1337 stations** have been identified for upgradation/modernization over Indian Railways.

History of Hathkanangle Station:

Hatkanangale Railway Station (HTK), located in Kolhapur district, Maharashtra, is included in the Amrit Bharat Station Scheme for modernization. It has **two platforms** and supports both the local town and nearby Ichalkaranji's textile economy. While standard redevelopment under ABSS involves upgrading approaches, circulation, platforms, waiting areas, toilets, signage, lighting, and accessibility, **no specific funding amount or cultural significance** (like NSG-5 classification, exact ₹19.10 crore investment, Ramling Temple connection, or explicit heritage preservation) has been confirmed via official sources.

Revitalizing Hathkanangle Station under the Amrit Bharat Station Scheme

Located in the Southern part of Maharashtra, Hathkanangle Railway Station serves as a key agriculture production hub and near proximity to major textile production hub Ichalkaranji in the region, linking the state with neighboring areas and contributing significantly to local commerce. While exact funding is not publicly confirmed, smaller stations like Hatkanangale typically receive redevelopment funds in the range of ₹5–10 crore. Planned upgrades are focused on modern passenger amenities, improved accessibility (ramps, toilets, signage), enhanced lighting, and regional aesthetic design. There is no specific plan for large-scale heritage preservation or an exact investment figure of ₹19.10 crore.



Before Development



Proposed View

Facility planned at Station:

In Phase-I, following improvement works costing Rs.19.10 Cr. are planned –

- **Enhanced Station Approaches and Circulating Area:** Improvement of station approaches with, drop off zone, Porch, signages and landscaping for beautification of circulating area.
- **Inclusive Accessibility and Facilities for Divyangjan:** Divyangjan-friendly design with accessible signage, dedicated toilet facilities, and separate parking areas for two-wheelers, four-wheelers, and Divyangjan passengers.
- **Façade Enhancement:** Major improvement of the façade of the existing building.
- **New Passenger Amenities and Improved:** Provision of Renovation of booking office, non-AC waiting hall, modern toilet block and improvement of old station building etc.
- **Platform Improvements:** Improvement of Platform surface & new shed and covering of platform surfaces upto FOB.
- **Upgraded Passenger Information Systems:** Improvement to passenger information system by providing Coach Guidance display board, Multiline Display Boards, Single Line Display Boards, Public Addressing System, Large LED screens and GPS based Digital Clock.

Design Philosophy

The local design philosophy for Hathkanangle Railway Station blends modern amenities with a functional and aesthetically pleasing environment. The design will focus on the following principles:

- **Reflecting Modern Architecture:** Incorporating Modern architectural features such as flowing rethm and use of latest sustainable material.
- **Use of Regional Materials:** Utilizing local materials like brick work, glass and ACP cladding to maintain harmony with the surrounding landscape.
- **Sustainability and Climate Sensitivity:** Focusing on energy-efficient cooling, shade structures, and green spaces to address the semi-arid climate while promoting sustainability by incorporating provision for solar panels on roofing sheets of parking.
- **Modern Amenities:** Modern infrastructure is been proposed by providing pasanger amanities like digital signages, divyangjan friendly toilets, ramps, etc. with universal design.
- **Warm Color Palette:** Using earthy tones inspired by Maharashtra's landscape.

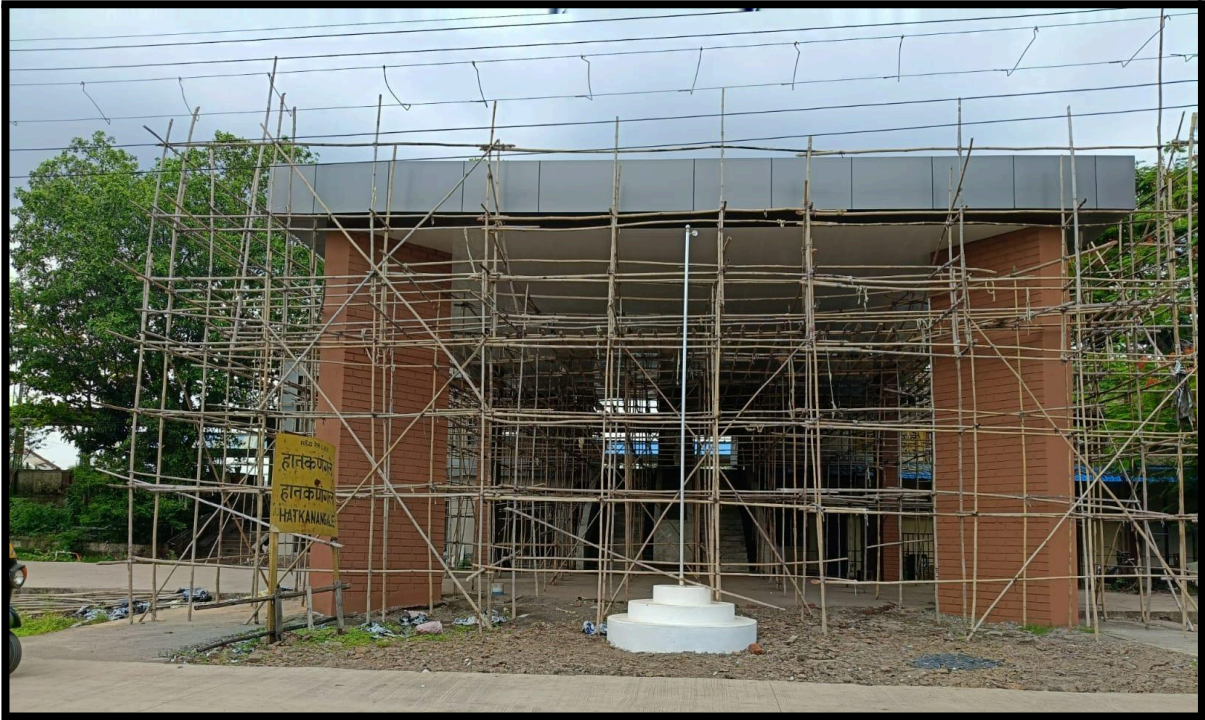
These principles will transform Hathkanangle Railway Station into a modern, sustainable, and enhancing the passenger experience and creating a landmark for region.

Challenges overcome:

The old station building lacked the aesthetics and the lack of proper space utilization, which have been improved by the revamping of the complete station building. Now the station building is more spacious and passenger friendly. The existing circulating area was not having the proper movement of the vehicle with single entry & exit and the same has been improved through the planned development of circulating area, separate entry/exit and increased parking space. This will give an ease of movement of vehicles and proper vehicle navigation in the circulating area. The station platform's surfacing was improved with tactile marking for Divyangjan, and additional platform shelters were provided for the passengers waiting at platform, which will further help them during hot and rainy weather. New specious waiting rooms/ halls were constructed, which will provide a comfortable waiting space to the passengers. New booking offices with latest facilities giving restriction free access to passengers. Modern toilets are constructed providing hygienic & comfortable experience to users as well as facilities for divyangjan are proposed.

Current Status of Work: The redevelopment work at Hathkanangle Railway Station is progressing steadily, with a tentative completion during 2025. Once completed, the station will transform into a symbol of modernity and efficiency, setting new benchmarks in railway infrastructure and passenger amenities, while preserving the region’s cultural heritage. This revitalization will enhance connectivity, comfort, and convenience for travelers, making Hathkanangle a key hub in the region.

Station Building improvement (Work in progress)



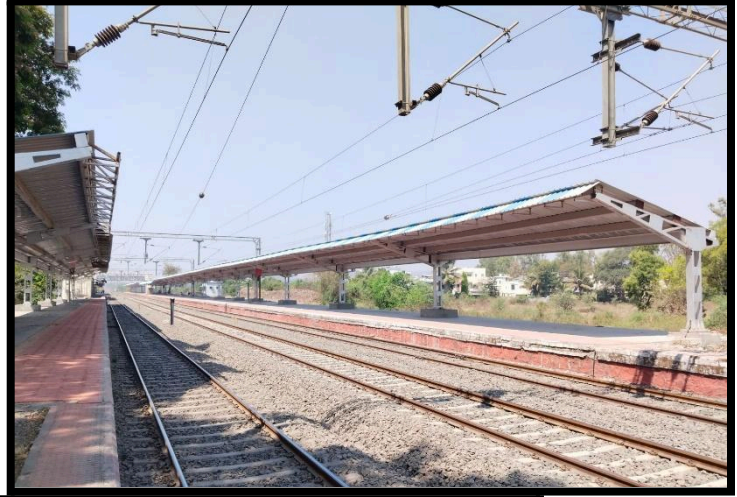
Entry Gate (Work in progress)



Waiting Room (Work in progress)



Platform Improvement



Toilet Improvement (Work in progress)



Improvement of COP & PF Surface at PF 1 & 2 (work in progress)

