

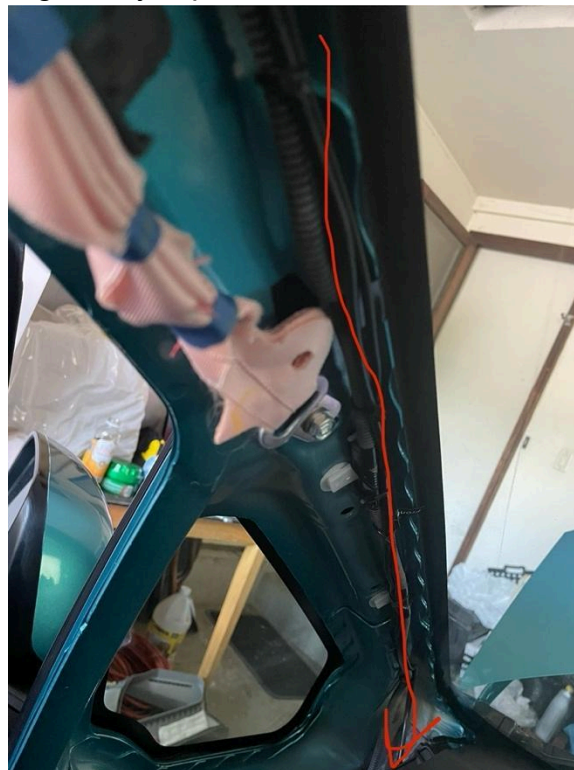
Hello! Happy to share info! This is a lot of stuff, but let me know if there is anything else. Each video is listed first, then the pertaining text is underneath. I should note that I am not a professional. I did my best with the videos I had, but I can't promise everything is going to be as it should "properly be done".

[https://m.youtube.com/watch?v=IQtZF0g51Ak&list=PL\\_zU92BJD44G1jPIGVowkDyksNuZ\\_so\\_y&index=4&t=1610s&pp=gAQBiAQB](https://m.youtube.com/watch?v=IQtZF0g51Ak&list=PL_zU92BJD44G1jPIGVowkDyksNuZ_so_y&index=4&t=1610s&pp=gAQBiAQB)

I used this video to understand general layout for doing the wiring through the car. The second half of the video shows how to do it with a car with side curtain airbags, which is important because you do not want to run your wires over them. I've noticed there's a lot of videos out there that just show people wiring their cars with side curtain airbags how you might with a car that doesn't have side airbags. But it's really important to not cover those guys.

[https://m.youtube.com/watch?v=SWe61-5R6m8&list=PL\\_zU92BJD44G1jPIGVowkDyksNuZ\\_so\\_y&index=8&t=926s&pp=gAQBiAQB0gcJCQMKAYcqIYzv](https://m.youtube.com/watch?v=SWe61-5R6m8&list=PL_zU92BJD44G1jPIGVowkDyksNuZ_so_y&index=8&t=926s&pp=gAQBiAQB0gcJCQMKAYcqIYzv)

Since the car has side airbags, you have to remove the A pillar panel. It was really hard to find videos for second GEN A pillar removal. There's one out there for third GEN but it's actually a completely different mechanism. I use this video which is a complete Guide to take apart the dash of the car. In the video, the person talks about taking off the A pillar and gives us a pretty good explanation on it. Heres a photo of the wiring for my A pillar that I did:



[https://m.youtube.com/watch?v=T1BmIR1EQXI&list=PL\\_zU92BJD44G1jPIGVowkDyksNuZ\\_so\\_y&index=7&t=338s&pp=2AHSAPACAYAEAYgEAQ%3D%3D](https://m.youtube.com/watch?v=T1BmIR1EQXI&list=PL_zU92BJD44G1jPIGVowkDyksNuZ_so_y&index=7&t=338s&pp=2AHSAPACAYAEAYgEAQ%3D%3D)

When working on the airbags, it's pretty important to unplug your battery. It made me feel a lot more comfortable when I was messing around with the airbags, especially when you have to remove the A pillar. At 2:55 in the video he goes over properly unplugging a battery. I was nervous about this one, but I wore some gloves and it worked well. Also, the bonus tip at the end is good to know about tightening the terminals. I left the battery in the car, but just moved the terminals out of the way. (The red one doesn't go out of the way so I stuck a little piece of wood in between lol.) After you plug your battery back in the radio will go into theft mode. The code to type into your radio will be in your manual. If you like me and don't have a manual then you can bring your car over to your Honda dealership and they will quickly check the code for you. Mine did it for free and I didn't even buy the car with them. You can also call them after you get the serial number of the radio. There's a couple of explanations online for that. I wasn't successful with it, but I think I was pressing the wrong buttons lol.

[https://m.youtube.com/watch?v=oOE7YT63Bc4&list=PL\\_zU92BJD44G1jPIGVowkDyksNuZ\\_so\\_y&index=9&pp=gAQBiAQB](https://m.youtube.com/watch?v=oOE7YT63Bc4&list=PL_zU92BJD44G1jPIGVowkDyksNuZ_so_y&index=9&pp=gAQBiAQB)

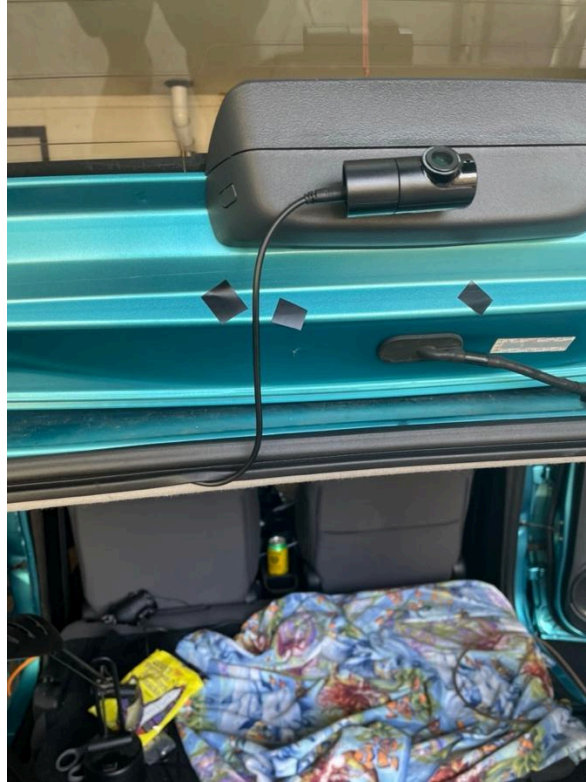
So, when it comes to the back panels, the first video is a bit different. Since they're working on a Prius, all of the paneling is a little different. Once I got my wiring up the side of the second door, I actually fed it through the main big bottom panel. I didn't want to mess around with the C pillar airbags, so I needed to take that whole side back panel off. Here's a video of someone doing it with the third GEN. It's not going to be entirely the same as the second GEN seems to be a lot more tough. Not to mention that you have to take more panels off for our cars. But if you're slow and try to shimmy it off carefully it worked for me.

To be able to do that, though you have to take off the cover where the spare is. That pops out really easily. You also have to take off the little back panel that goes where your door latches in. I've included a picture below that kind of shows what I'm talking about. It seems really intimidating, but I kind of realize that the car was one giant Lego that I could just take apart and put back together. You might break a clip, but if you have a Honda dealership nearby, they can order you parts and get them and usually within the next day.

Here I have the panels (or where there would be panels circled), I almost always attached wires to preexisting tubes.



Here is a photo of how I ran the camera up. I didn't go through to the hatch because I couldn't figure out how to bring it around. Instead I stuck to the base of the car.



I also ran the wire up the side of the very back pillar. I attached a photo of where the wire eventually went.



<https://m.youtube.com/watch?v=8b9CvUMcNQo>

Now for the actual fuse box stuff. Here is one video I used. I also relied heavily on viofo's instructions even though I bought a thinkware.

Here is the one I used the most:

[https://www.viofo.com/blogs/viofo-car-dash-camera-guide-faq-and-news/how-to-install-the-hardwire-kit-a-step-by-step-guide?gad\\_source=1&gad\\_campaignid=20408532455&gclid=Cj0KCQjwI5jHBhDHARIsAB0YqjxMsfEU8w5IITXRFgLgM7H-lkN2TueMknIPYhAjVFz6pT4GQYF2OwkaAv6hEALw\\_wcB](https://www.viofo.com/blogs/viofo-car-dash-camera-guide-faq-and-news/how-to-install-the-hardwire-kit-a-step-by-step-guide?gad_source=1&gad_campaignid=20408532455&gclid=Cj0KCQjwI5jHBhDHARIsAB0YqjxMsfEU8w5IITXRFgLgM7H-lkN2TueMknIPYhAjVFz6pT4GQYF2OwkaAv6hEALw_wcB)

I plugged one into the hazard light and another into acc socket fuse. I'd suggest checking those just in case. I know it worked on my car but better safe than sorry. You can see how to do that in the video above.

Here is the Honda fit manual since my car didn't come with it. Fuse information starts on page 260.

<file:///var/mobile/Library/SMS/Attachments/78/08/89201A03-C117-49EA-8B79-FBEA6B530296/Honda%20Fit%20Manual.pdf>

Anyway! Happy to answer any questions. I know this is really long winded. I'll send a photo of my fuse box later when I am by my car.

Extra photos for reference!

Here is the wiring for the front door as well as the wiring for the back door!

